

## Rabbit Anti-C5a anaphylatoxin antibody

SL0324R

**Product Name** C5a anaphylatoxin

**Chinese Name** 补体 C5a 抗体

**Alias** C5; C6; C7; C8; C9; Complement component 5; Complement component 6; Complement component 7; Complement component 8; Complement component 9; MAC; Membrane attack complex; TCC; Terminal complement complex.

**Research Area** immunology Neurobiology

**Immunogen Species** Rabbit

**Clonality** Polyclonal

**React Species** Human(predicted:Mouse,Rat)

**Applications** WB=1:500-2000,Flow-Cyt=2ug/Test  
not yet tested in other applications.  
optimal dilutions/concentrations should be determined by the end user.

**Theoretical molecular weight** 8/109kDa

**Cellular localization** Secretory protein

**Form** Liquid

**Concentration** 1mg/ml

**immunogen** Purified Human SC5b-9 Complex: 701-755/1680

**Lsotype** IgG

**Purification** affinity purified by Protein A

**Buffer Solution** Human(predicted:Mouse,Rat)1M TBS(pH7.4) with 1% BSA,  
Human(predicted:Mouse,Rat)3% Proclin300 and 50% Glycerol.

**Storage** Shipped at 4°C. Store at -20 °C for one year. Avoid repeated freeze/thaw cycles.

**Attention** This product as supplied is intended for research use only, not for use in human, therapeutic or diagnostic applications.

**PubMed** [PubMed](#)

**Product** Activation of the complement system plays a key role in normal inflammatory

**Detail**

response to injury but may cause substantial injury when activated inappropriately. The complement system is activated either through the classical (antibody induced) or the alternative (microbial surface, polysacharride induced) pathway, both leading to the formation of the C5b9 complex. Fluid phase binding of the multifunctional glycoprotein S protein (vitronectin) to C5b9 leads to the formation of a cytolytically inactive complex, SC5b9, which is unable to attach to cells.

**SWISS:**  
P02748

**Gene ID:**  
727

**Database links:**

[Entrez Gene: 727](#) Human

[Entrez Gene: 729](#) Human

[Entrez Gene: 730](#) Human

[Entrez Gene: 731](#) Human

[Entrez Gene: 735](#) Human

[SwissProt: P01031](#) Human

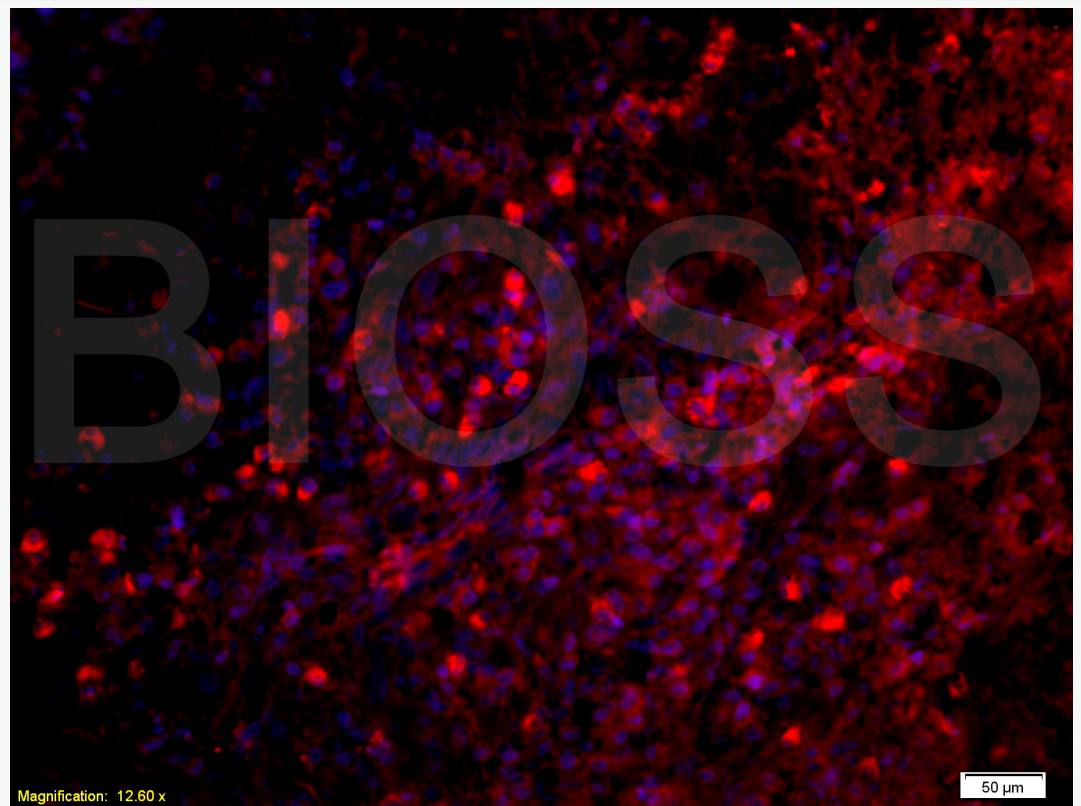
[SwissProt: P02748](#) Human

[SwissProt: P07357](#) Human

[SwissProt: P10643](#) Human

[SwissProt: P13671](#) Human

**Product  
Picture**



Tissue/cell: Human laryngeal carcinoma;4% Paraformaldehyde-fixed and paraffin-embedded;

Antigen retrieval: citrate buffer ( Human(predicted:Mouse,Rat)1M, pH 6.0 ),

Boiling bathing for 15min; Blocking buffer (normal goat serum,C-0005) at 37°C for 20 min;

Incubation: Anti-C5b-9 Polyclonal Antibody, Unconjugated(SL0324R) 1:200, overnight at 4°C; The secondary antibody was Goat Anti-Rabbit IgG, PE conjugated(SL0295G-PE)used at 1:200 dilution for 40 minutes at 37°C.

DAPI(5ug/ml,blue,C-0033) was used to stain the cell nuclei