

Rabbit Anti-NMDAR2C antibody

SL0323R

Product Name NMDAR2C

Chinese Name 谷氨酸受体 2C 抗体 (N 端)

Alias NR2C; N-Methyl-d-Aspartate receptor 2C; Glutamate Receptor Ionotropic N Methyl D Aspartate 2C; GRIN2C; N Methyl D Aspartate Receptor Channel Subunit Epsilon 3; N Methyl D Aspartate Receptor Subtype 2C; NR2C; NMDE3_HUMAN.

Research Area Cell biology Neurobiology Signal transduction The cell membrane 受体

Immunogen Species Rabbit

Clonality Polyclonal

React Species Mouse,Rat

Applications WB=1:500-2000,IHC-P=1:100-500,IHC-F=1:100-500,IF=1:100-500 (Paraffin sections need antigen repair)
not yet tested in other applications.
optimal dilutions/concentrations should be determined by the end user.

Theoretical molecular weight 163kDa

Cellular localization The cell membrane

Form Liquid

Concentration 1mg/ml

immunogen KLH conjugated synthetic peptide derived from human NMDAR2C: 501-600/1482 <Extracellular>

Lsotype IgG

Purification affinity purified by Protein A

Buffer Solution Mouse,Rat1M TBS(pH7.4) with 1% BSA, Mouse,Rat3% Proclin300 and 50% Glycerol.

Storage Shipped at 4°C. Store at -20 °C for one year. Avoid repeated freeze/thaw cycles.

Attention This product as supplied is intended for research use only, not for use in human, therapeutic or diagnostic applications.

PubMed

[PubMed](#)

This gene encodes a subunit of the N-methyl-D-aspartate (NMDA) receptor, which is a subtype of ionotropic glutamate receptor. NMDA receptors are found in the central nervous system, are permeable to cations and have an important role in physiological processes such as learning, memory, and synaptic development. The receptor is a tetramer of different subunits (typically heterodimer of subunit 1 with one or more of subunits 2A-D), forming a channel that is permeable to calcium, potassium, and sodium, and whose properties are determined by subunit composition. Alterations in the subunit composition of the receptor are associated with pathophysiological conditions such as Parkinson's disease, Alzheimer's disease, depression, and schizophrenia. Alternative splicing results in multiple transcript variants. [provided by RefSeq, Jun 2013]

Function:

NMDA receptor subtype of glutamate-gated ion channels with high calcium permeability and voltage-dependent sensitivity to magnesium. Mediated by glycine.

Subunit:

Interacts with PDZ domains of INADL and DLG4 (By similarity). Forms heteromeric channel of a zeta subunit (GRIN1), a epsilon subunit (GRIN2A, GRIN2B, GRIN2C or GRIN2D) and a third subunit (GRIN3A or GRIN3B).

Product Detail

Subcellular Location:

Cell membrane; Multi-pass membrane protein. Cell junction, synapse, postsynaptic cell membrane; Multi-pass membrane protein.

Tissue Specificity:

Mainly expressed in brain with predominant expression is in the cerebellum, also present in the hippocampus, amygdala, caudate nucleus, corpus callosum, subthalamic nuclei and thalamus. Detected in the heart, skeletal muscle and pancreas.

Similarity:

Belongs to the glutamate-gated ion channel (TC 1.A.10.1) family. NR2C/GRIN2C subfamily.

SWISS:

Q14957

Gene ID:

2905

Database links:



[Entrez Gene: 2905](#) Human

[Entrez Gene: 14813](#) Mouse

[Entrez Gene: 24411](#) Rat

[GenBank: NM_000835](#) Human

[GenBank: NM_010350](#) Mouse

[Omim: 138254](#) Human

[SwissProt: Q14957](#) Human

[SwissProt: Q01098](#) Mouse

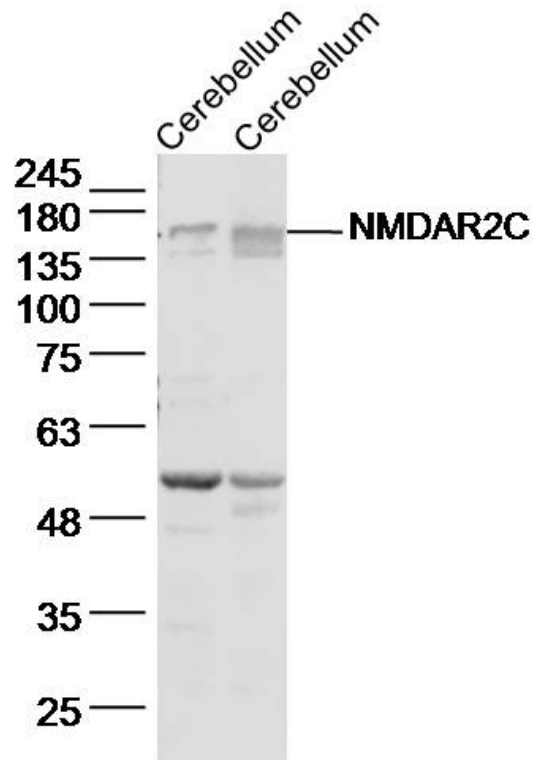
[SwissProt: Q00961](#) Rat

[Unigene: 436980](#) Human

[Unigene: 39090](#) Mouse

[Unigene: 9709](#) Rat

**Product
Picture**



Sample:

Cerebellum (Mouse) Lysate at 40 ug

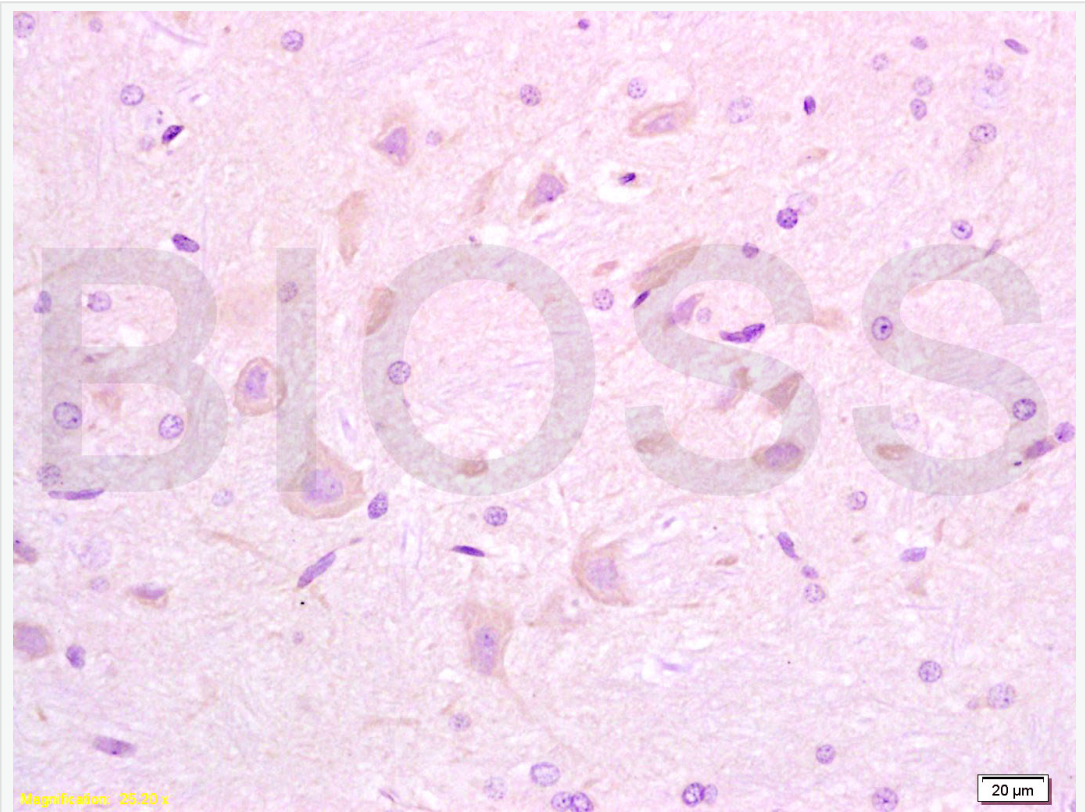
Cerebellum (Rat) Lysate at 40 ug

Primary: Anti- NMDAR2C (SL0323R) at 1/300 dilution

Secondary: IRDye800CW Goat Anti-Rabbit IgG at 1/20000 dilution

Predicted band size: 163 kD

Observed band size: 163 kD



Tissue/cell: rat brain tissue; 4% Paraformaldehyde-fixed and paraffin-embedded;
Antigen retrieval: citrate buffer (Mouse,Rat1M, pH 6.0), Boiling bathing for 15min; Block endogenous peroxidase by 3% Hydrogen peroxide for 30min;
Blocking buffer (normal goat serum,C-0005) at 37°C for 20 min;
Incubation: Anti-NR2C/NMDAR2C Polyclonal Antibody,
Unconjugated(SL0323R) 1:100, overnight at 4°C, followed by conjugation to the secondary antibody(SP-0023) and DAB(C-0010) staining