

## Rabbit Anti-Mesothelin antibody

SL0300R

**Product Name** Mesothelin

**Chinese Name** 间皮素抗体

**Alias** MSLN; MES; CAK 1; CAK1; CAK1 antigen; Megakaryocyte potentiating factor; Mesothelin isoform 1 precursor; MPF; Pre pro megakaryocyte potentiating factor; SMR; SMRP; Soluble MPF mesothelin related protein; MSLN\_HUMAN.

**Research Area** Tumour immunology TumourCell biologyMaker

**Immunogen Species** Rabbit

**Clonality** Polyclonal

**React Species** Human, Mouse, Rat,  
WB=1:500-2000,ELISA=1:5000-10000

**Applications** not yet tested in other applications.  
optimal dilutions/concentrations should be determined by the end user.

**Theoretical molecular weight** 64kDa

**Cellular localization** The cell membrane Secretory protein

**Form** Liquid

**Concentration** 1mg/ml

**immunogen** KLH conjugated synthetic peptide derived from human Mesothelin: 101-200/630

**Lsotype** IgG

**Purification** affinity purified by Protein A

**Buffer Solution** 1M TBS(pH7.4) with 1% BSA, 3% Proclin300 and 50% Glycerol.

**Storage** Shipped at 4°C. Store at -20 °C for one year. Avoid repeated freeze/thaw cycles.

**Attention** This product as supplied is intended for research use only, not for use in human, therapeutic or diagnostic applications.

**PubMed** [PubMed](#)

**Product** Mesothelin(MSLN)may play a role in cell adhesion and cell shape dynamics; human

---

**Detail**

homolog highly expressed in renal cell carcinoma. malignant tumors, such as a skin lump, ovary cancer and the pancreas cancer...etc..Mainly used for the research of the malignant tumor.

**Function:**

Membrane-anchored forms may play a role in cellular adhesion.

Megakaryocyte-potentiating factor (MPF) potentiates megakaryocyte colony formation in vitro.

**Subunit:**

Interacts with MUC16.

**Subcellular Location:**

Cell membrane; Lipid-anchor, GPI-anchor. Golgi apparatus.

Megakaryocyte-potentiating factor: Secreted.

Isoform 3: Secreted.

**Tissue Specificity:**

Expressed in lung. Expressed at low levels in heart, placenta and kidney. Expressed in mesothelial cells. Highly expressed in mesotheliomas, ovarian cancers, and some squamous cell carcinomas (at protein level).

**Post-translational modifications:**

Both MPF and the cleaved form of mesothelin are N-glycosylated.

Proteolytically cleaved by a furin-like convertase to generate megakaryocyte-potentiating factor (MPF), and the cleaved form of mesothelin.

**Similarity:**

Belongs to the mesothelin family.

**SWISS:**

Q13421

**Gene ID:**

10232

**Database links:**

[Entrez Gene: 10232](#) Human

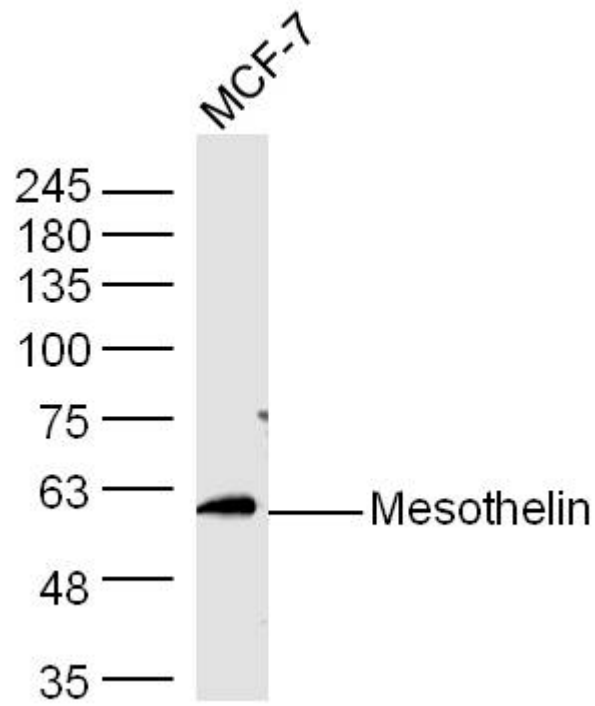
[Omim: 601051](#) Human

[SwissProt: Q13421](#) Human

[Unigene: 408488](#) Human

间皮素 (mesothelin, MSLN) 是一种相对分子量: 64kDa 的细胞表面 glycoprotein, 在间皮瘤、卵巢癌、胰腺癌等恶性 Tumour 中有较高的表达。主要用于恶性 Tumour 的研究。

Product  
Picture



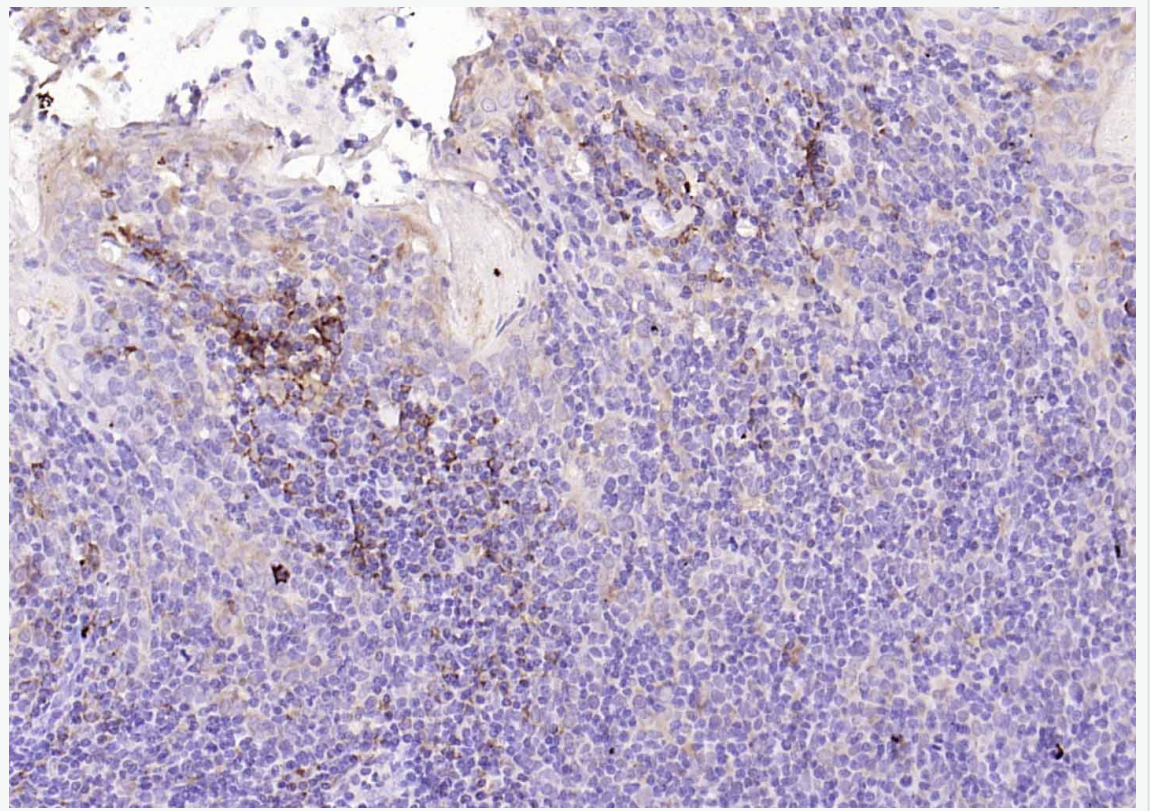
Sample: MCF-7 Cell Lysate at 40 ug

Primary: Anti- Mesothelin (SL0300R) at 1/300 dilution

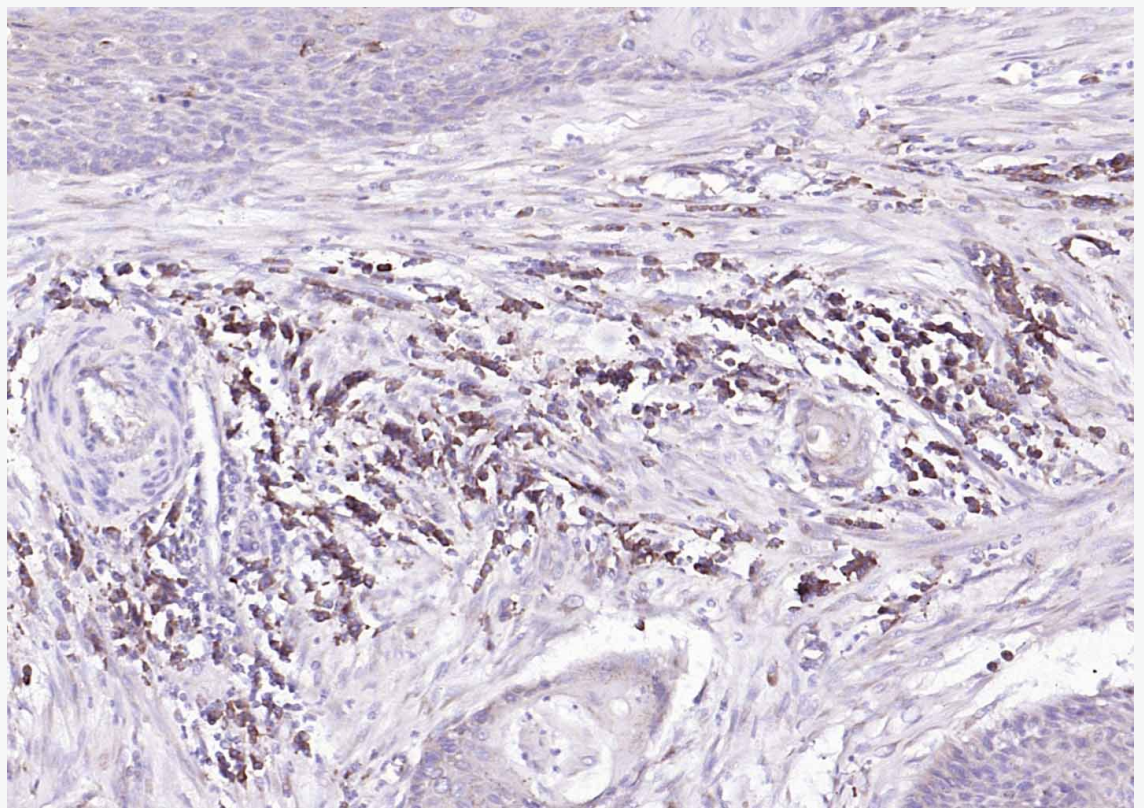
Secondary: IRDye800CW Goat Anti-Rabbit IgG at 1/20000 dilution

Predicted band size: 64 kD

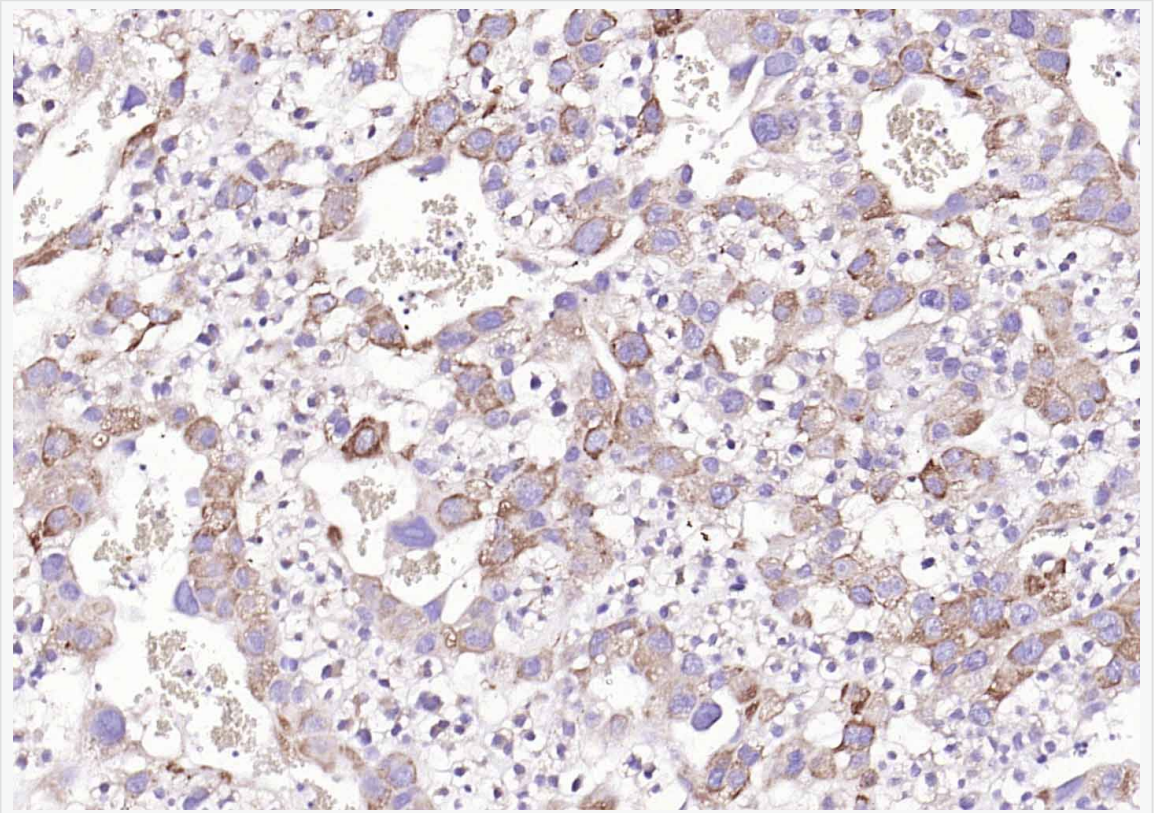
Observed band size: 62 kD



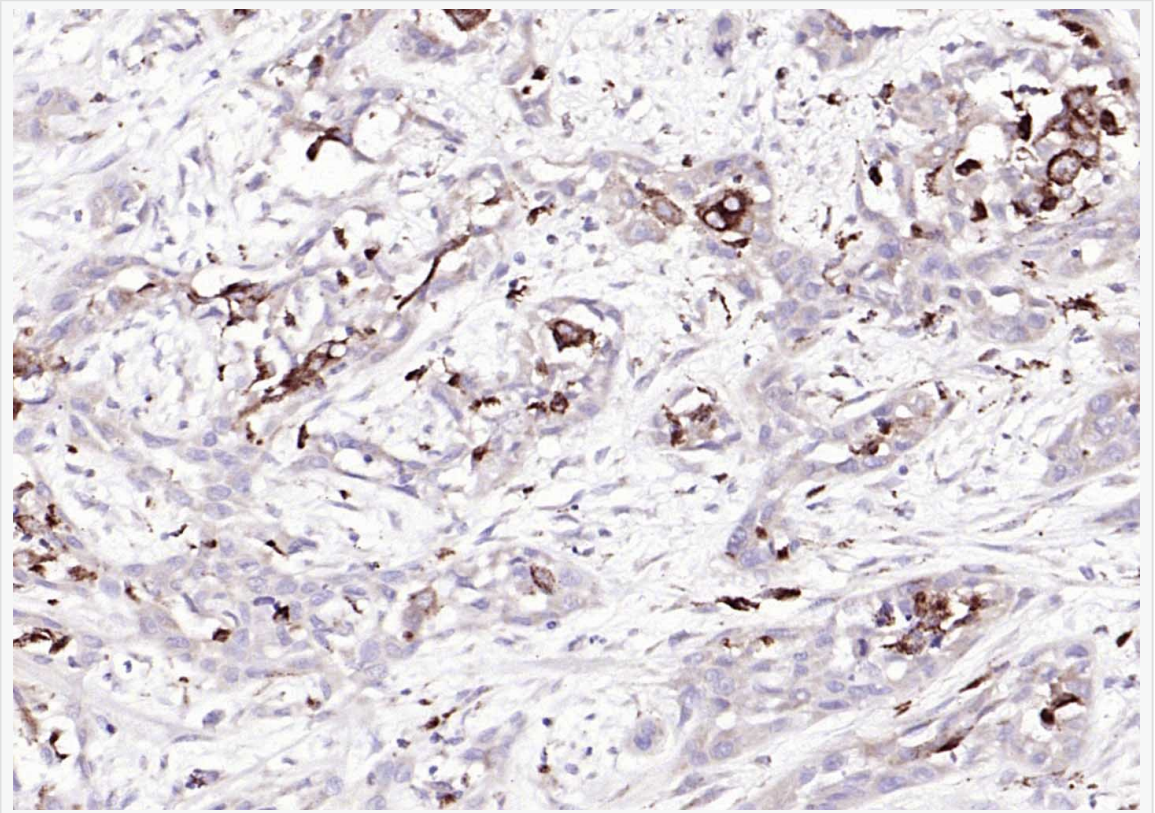
Paraformaldehyde-fixed, paraffin embedded (human tonsil); Antigen retrieval by boiling in sodium citrate buffer (pH6.0) for 15min; Block endogenous peroxidase by 3% hydrogen peroxide for 20 minutes; Blocking buffer (normal goat serum) at 37°C for 30min; Antibody incubation with (Mesothelin) Polyclonal Antibody, Unconjugated (SL0300R) at 1:200 overnight at 4°C, followed by operating according to SP Kit(Rabbit) (sp-0023) instructions and DAB staining.



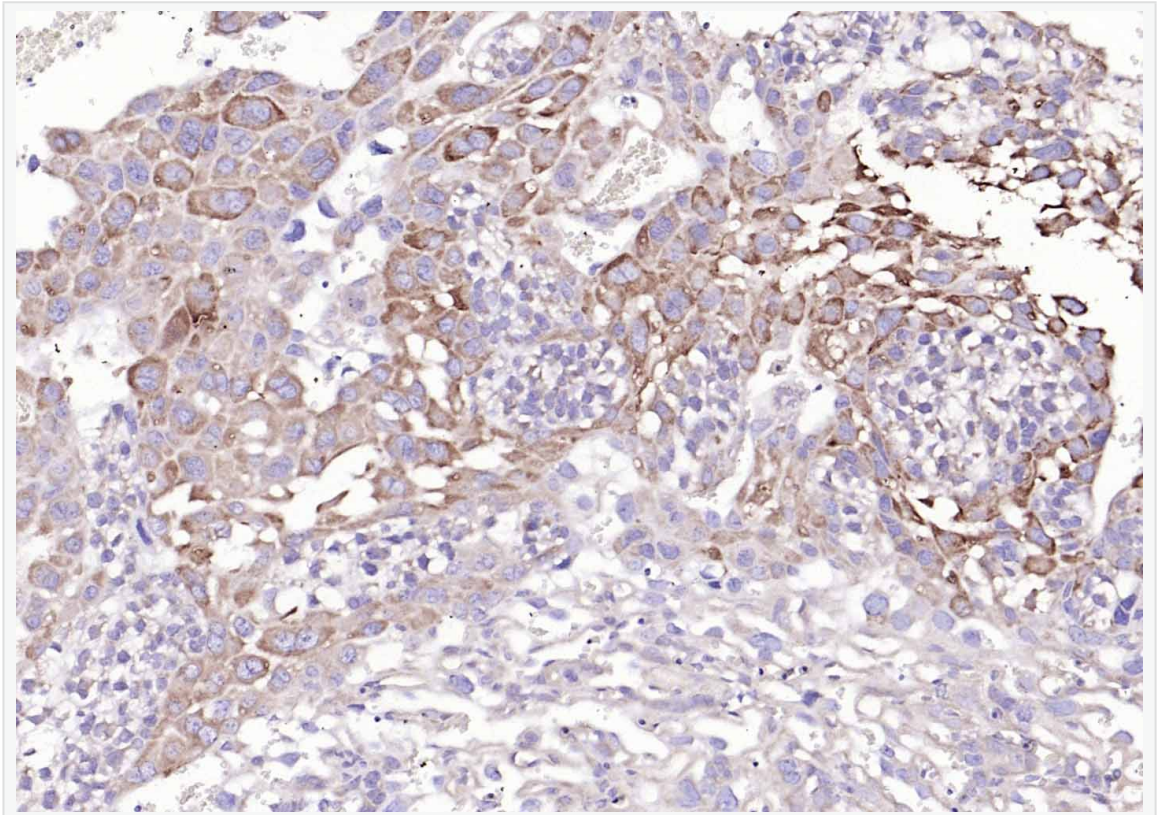
Paraformaldehyde-fixed, paraffin embedded (human cervical carcinoma); Antigen retrieval by boiling in sodium citrate buffer (pH6.0) for 15min; Block endogenous peroxidase by 3% hydrogen peroxide for 20 minutes; Blocking buffer (normal goat serum) at 37°C for 30min; Antibody incubation with (Mesothelin) Polyclonal Antibody, Unconjugated (SL0300R) at 1:200 overnight at 4°C, followed by operating according to SP Kit(Rabbit) (sp-0023) instructions and DAB staining.



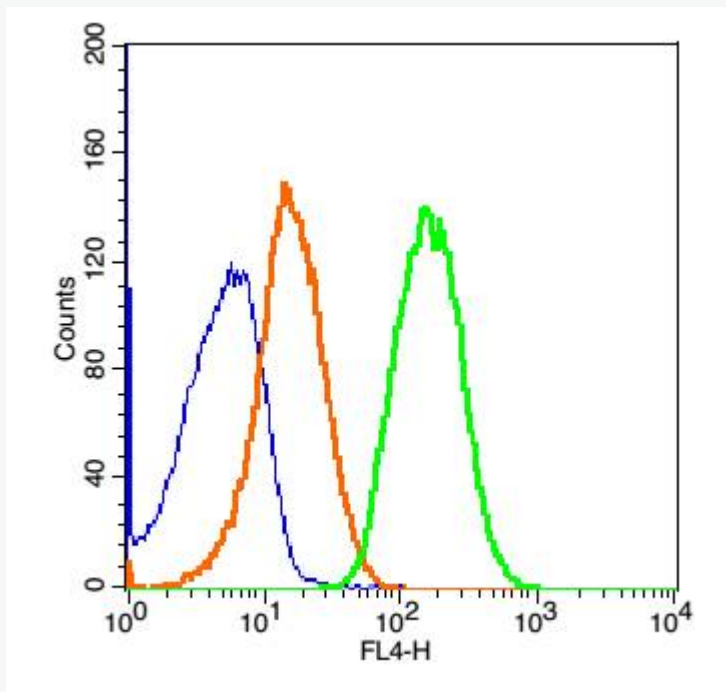
Paraformaldehyde-fixed, paraffin embedded (rat placenta); Antigen retrieval by boiling in sodium citrate buffer (pH6.0) for 15min; Block endogenous peroxidase by 3% hydrogen peroxide for 20 minutes; Blocking buffer (normal goat serum) at 37°C for 30min; Antibody incubation with (Mesothelin) Polyclonal Antibody, Unconjugated (SL0300R) at 1:200 overnight at 4°C, followed by operating according to SP Kit(Rabbit) (sp-0023) instructions and DAB staining.



Paraformaldehyde-fixed, paraffin embedded (human gastric carcinoma); Antigen retrieval by boiling in sodium citrate buffer (pH6.0) for 15min; Block endogenous peroxidase by 3% hydrogen peroxide for 20 minutes; Blocking buffer (normal goat serum) at 37°C for 30min; Antibody incubation with (Mesothelin) Polyclonal Antibody, Unconjugated (SL0300R) at 1:200 overnight at 4°C, followed by operating according to SP Kit(Rabbit) (sp-0023) instructions and DAB staining.



Paraformaldehyde-fixed, paraffin embedded (mouse placenta); Antigen retrieval by boiling in sodium citrate buffer (pH6.0) for 15min; Block endogenous peroxidase by 3% hydrogen peroxide for 20 minutes; Blocking buffer (normal goat serum) at 37°C for 30min; Antibody incubation with (Mesothelin) Polyclonal Antibody, Unconjugated (SL0300R) at 1:200 overnight at 4°C, followed by operating according to SP Kit(Rabbit) (sp-0023) instructions and DAB staining.



Blank control: HeLa(blue).

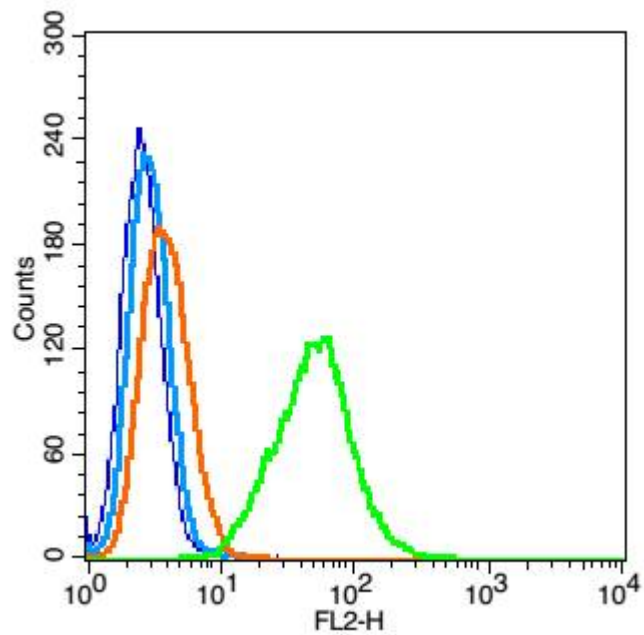
Primary Antibody: Rabbit Anti-Mesothelin/AF647 Conjugated antibody

(SL0300R-AF647), Dilution: 0.2 $\mu$ g in 100  $\mu$ L 1X PBS containing 0.5% BSA;

Isotype Control Antibody: Rabbit IgG/AF647(orange) ,used under the same conditions.

#### Protocol

The cells were washed twice with phosphate-buffered saline (PBS). The cells were incubated in 1 X PBS containing 0.5% BSA + 1 0% goat serum (15 min) to block non-specific protein-protein interactions followed by the antibody (SL0300R-AF647, 0.2 $\mu$ g /1x10<sup>6</sup> cells) for 30 min on ice. Acquisition of 20,000 events was performed.



Blank control: A549(blue), the cells were fixed with 2% paraformaldehyde (10 min) and then permeabilized with ice-cold 90% methanol for 30 min on ice..

Isotype Control Antibody: Rabbit IgG(orange) ; Secondary Antibody: Goat anti-rabbit IgG-FITC(white blue), Dilution: 1:100 in 1 X PBS containing 0.5% BSA ; Primary Antibody Dilution: 1 $\mu$ l in 100  $\mu$ L1X PBS containing 0.5% BSA(green).