

## Rabbit Anti-PLGF antibody

SL0280R

<b>Product Name</b>	PLGF
<b>Chinese Name</b>	胎盘生长因子抗体
<b>Alias</b>	Placenta growth factor; PGF; PGFL; PIGF; Placental growth factor vascular endothelial growth factor related protein; PIGF 2; PLGF; PIGF2; PLGF_MOUSE; Vascular endothelial growth factor related protein.
<b>Research Area</b>	Tumour Cell biology immunology Neurobiology Growth factors and hormones transcriptional regulatory factor Cell Surface Molecule
<b>Immunogen Species</b>	Rabbit
<b>Clonality</b>	Polyclonal
<b>React Species</b>	Rat (predicted:Mouse,Pig)
<b>Applications</b>	WB=1:500-2000 (Paraffin sections need antigen repair) not yet tested in other applications. optimal dilutions/concentrations should be determined by the end user.
<b>Theoretical molecular weight</b>	16kDa
<b>Cellular localization</b>	Secretory protein
<b>Form</b>	Liquid
<b>Concentration</b>	1mg/ml
<b>immunogen</b>	KLH conjugated synthetic peptide derived from mouse PLGF: 101-158/158
<b>Lsotype</b>	IgG
<b>Purification</b>	affinity purified by Protein A
<b>Buffer Solution</b>	1M TBS(pH7.4) with 1% BSA, 3% Proclin300 and 50% Glycerol.
<b>Storage</b>	Shipped at 4°C. Store at -20 °C for one year. Avoid repeated freeze/thaw cycles.
<b>Attention</b>	This product as supplied is intended for research use only, not for use in human, therapeutic or diagnostic applications.
<b>PubMed</b>	<a href="#">PubMed</a>
<b>Product Detail</b>	This gene encodes a growth factor found in placenta which is homologous to vascular endothelial growth factor. Alternatively spliced transcripts encoding

different isoforms have been found for this gene.[provided by RefSeq, Jun 2011]

**Function:**

Growth factor active in angiogenesis and endothelial cell growth, stimulating their proliferation and migration. It binds to the receptor FLT1/VEGFR-1. Isoform PIGF-2 binds NRP1/neuropilin-1 and NRP2/neuropilin-2 in a heparin-dependent manner.

**Subunit:**

Antiparallel homodimer; disulfide-linked. Also found as heterodimer with VEGFA/VEGF.

**Subcellular Location:**

Secreted. The three isoforms are secreted but PIGF-2 appears to remain cell attached unless released by heparin.

**Tissue Specificity:**

While the three isoforms are present in most placental tissues, PIGF-2 is specific to early (8 week) placenta and only PIGF-1 is found in the colon and mammary carcinomas.

**Post-translational modifications:**

N-glycosylated.

**Similarity:**

Belongs to the PDGF/VEGF growth factor family.

**SWISS:**

P49764

**Gene ID:**

18654

**Database links:**

[Entrez Gene: 5228](#) Human

[Entrez Gene: 18654](#) Mouse

[Entrez Gene: 94203](#) Rat

[Omim: 601121](#) Human

[SwissProt: P49763](#) Human

[SwissProt: P49764](#) Mouse

[SwissProt: Q63434](#) Rat

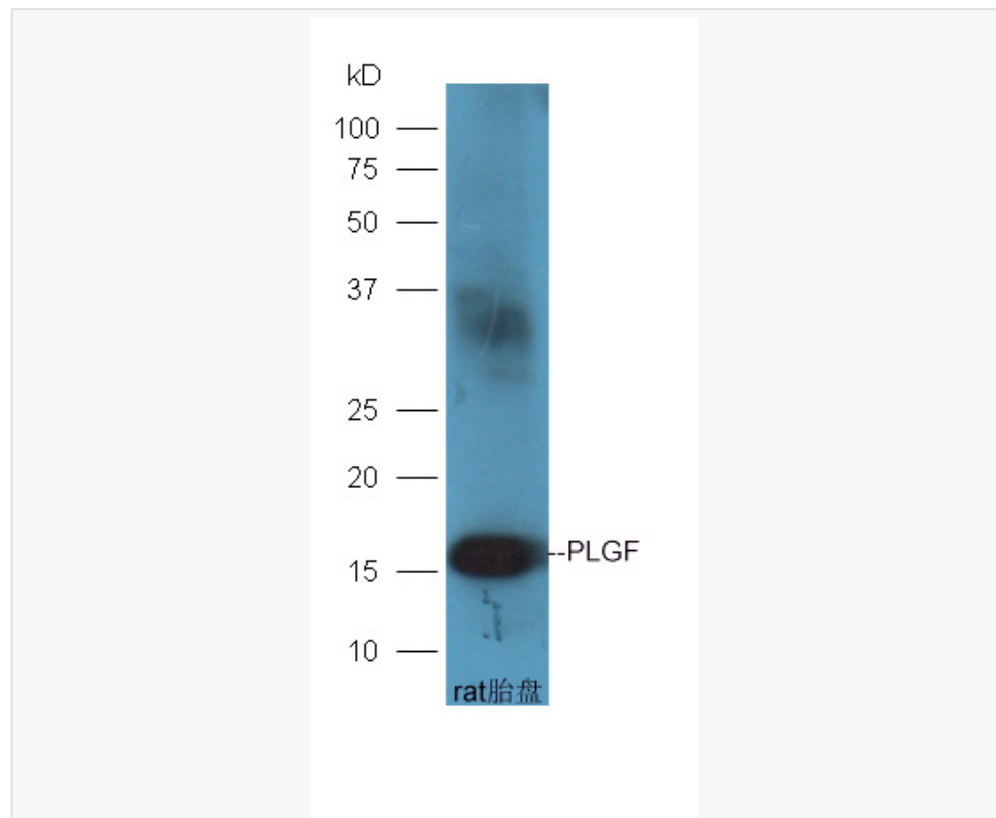
[Unigene: 252820](#) Human

[Unigene: 4809](#) Mouse

[Unigene: 6960](#) Rat

PLGF 胎盘生长因子是血管生长因子家族成员之一(又称:胎盘型 vascular endothelial cell 生长因子),是动脉粥样硬化斑块不稳定的主要炎性激活物,因此它可作为 ACS 患者风险预测的生物学 Marker.尿胎盘生长因子水平可预测先兆子痫危险.研究人员发现,在疾病发作前的 6 到 8 周,先兆子痫患者尿液中的胎盘生长因子水平急剧下降,这种新的尿检方法使提前 1 到 2 个月预测先兆子痫成为可能。亦有研究人员正在从事胎盘生长因子与肺气肿,胃癌,肠癌等方面的研究。

### Product Picture





Sample: Placenta (Rat) Lysate at 30 ug

Primary: rabbit Anti-PLGF (SL0280R) at 1:300 dilution;

Secondary: HRP conjugated Goat-Anti-rabbit IgG(SL0295G-HRP) at 1:  
5000 dilution;

Predicted band size:16 kD

Observed band size:16 kD