

## Rabbit Anti-SSB antibody

SL0276R

**Product Name** SSB

**Chinese Name** 干燥症 SSB/La 抗体

**Alias** SSB; Lupus La protein homolog; La ribonucleoprotein; La autoantigen homolog; Sjogren syndrome type B antigen; LA\_HUMAN.

**Research Area** immunology

**Immunogen Species** Rabbit

**Clonality** Polyclonal

**React Species** Human,  
IHC-P=1:100-500,IHC-F=1:100-500,IF=1:100-500 (Paraffin sections need antigen repair)  
**Applications** not yet tested in other applications.  
optimal dilutions/concentrations should be determined by the end user.

**Theoretical molecular weight** 47kDa

**Cellular localization** The nucleus

**Form** Liquid

**Concentration** 1mg/ml

**immunogen** KLH conjugated synthetic peptide derived from human SSB: 201-300/408

**Lsotype** IgG

**Purification** affinity purified by Protein A

**Buffer Solution** 1M TBS(pH7.4) with 1% BSA, 3% Proclin300 and 50% Glycerol.

**Storage** Shipped at 4°C. Store at -20 °C for one year. Avoid repeated freeze/thaw cycles.

**Attention** This product as supplied is intended for research use only, not for use in human, therapeutic or diagnostic applications.

**PubMed** [PubMed](#)

**Product** Lupus La protein (Sjogren syndrome type B antigen) (SS-B) (La ribonucleoprotein)

---

## Detail

(La autoantigen) plays a role in the transcription of RNA polymerase III. It is most probably a transcription termination factor. Binds to the 3' termini of virtually all nascent polymerase III transcripts. It is associated with precursor forms of RNA polymerase III transcripts including tRNA and 4.5S, 5S, 7S, and 7-2 RNAs. The phosphorylation sites are at the C-terminal part of the protein. Sera from patients with systemic lupus erythematosus(SLE) often contain antibodies that react with the normal cellular La protein as if this antigen was foreign.

### Function:

Binds to the 3' poly(U) termini of nascent RNA polymerase III transcripts, protecting them from exonuclease digestion and facilitating their folding and maturation.

### Subunit:

Interacts with DDX15. May interact with RUFY1.

### Subcellular Location:

Nucleus (Probable).

### Post-translational modifications:

Phosphorylated. The phosphorylation sites are at the C-terminal part of the protein. The N-terminus is blocked.

### Similarity:

Contains 1 HTH La-type RNA-binding domain.  
Contains 1 RRM (RNA recognition motif) domain.

### SWISS:

P05455

### Gene ID:

6741

### Database links:

[Entrez Gene: 6741](#) Human

[Entrez Gene: 20823](#) Mouse

[Entrez Gene: 81783](#) Rat

[GenBank: NP\\_003133.1](#) Human

[Omim: 109090](#) Human

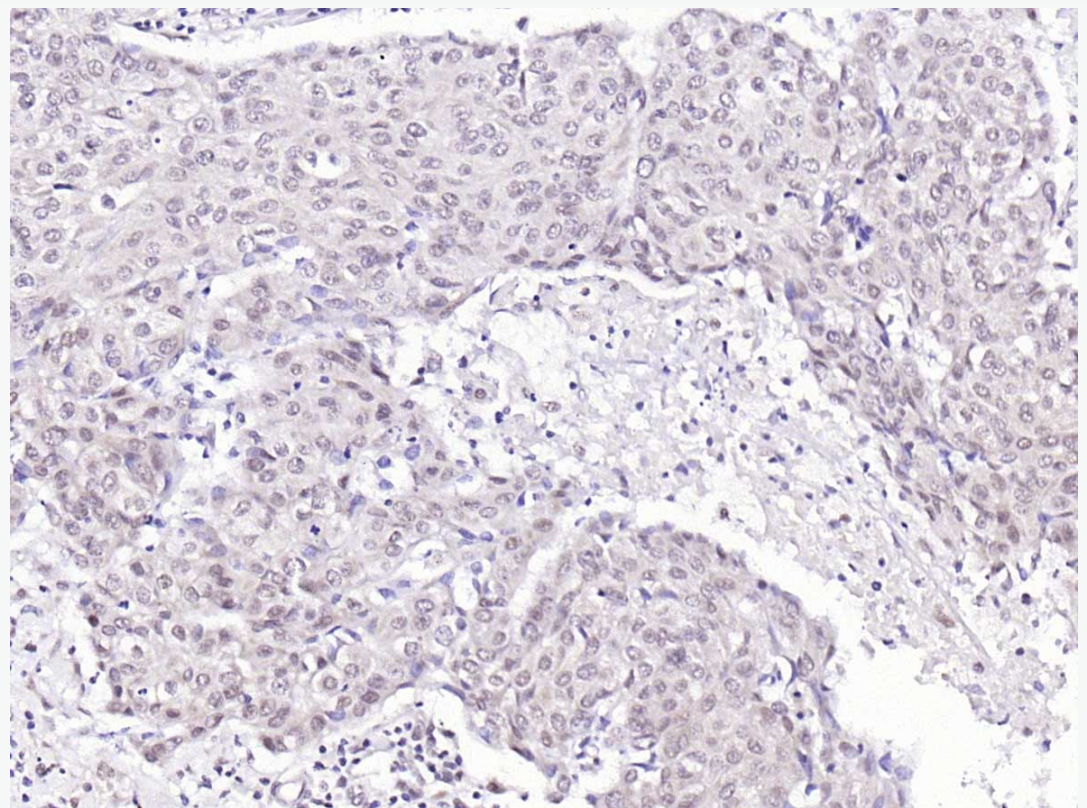
[SwissProt: P05455](#) Human

[SwissProt: P32067](#) Mouse

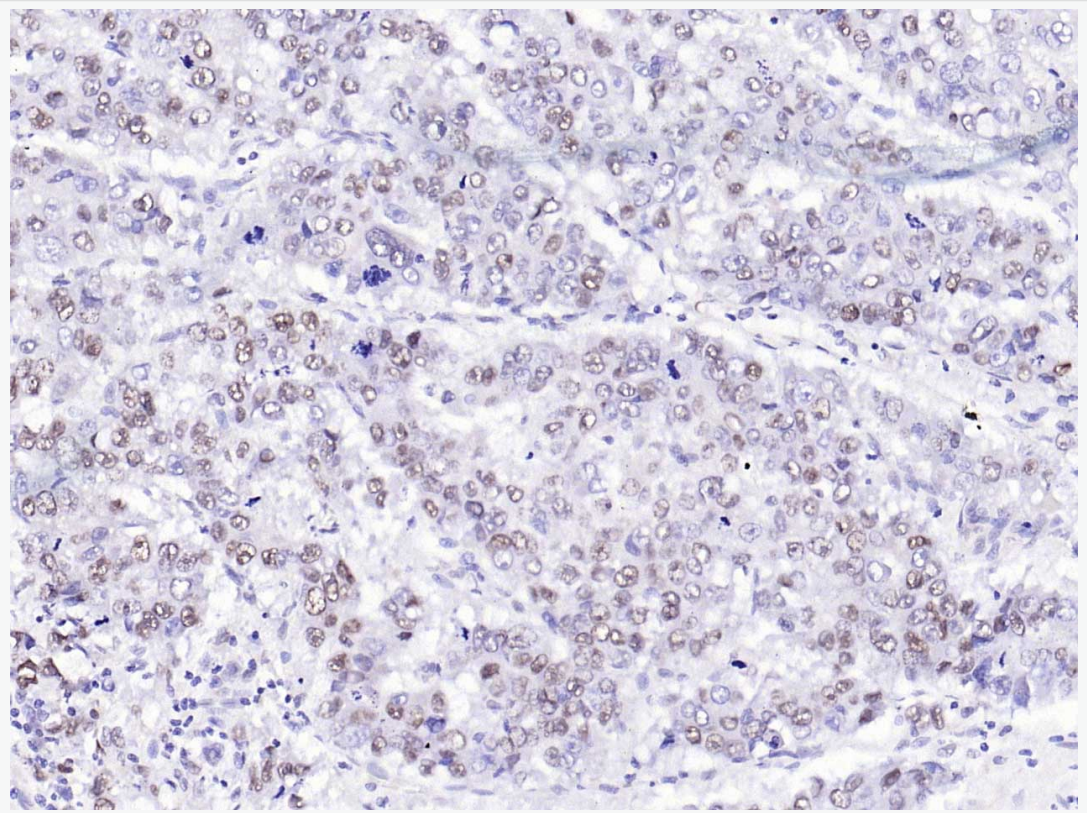
[SwissProt: P38656](#) Rat

[Unigene: 632535](#) Human

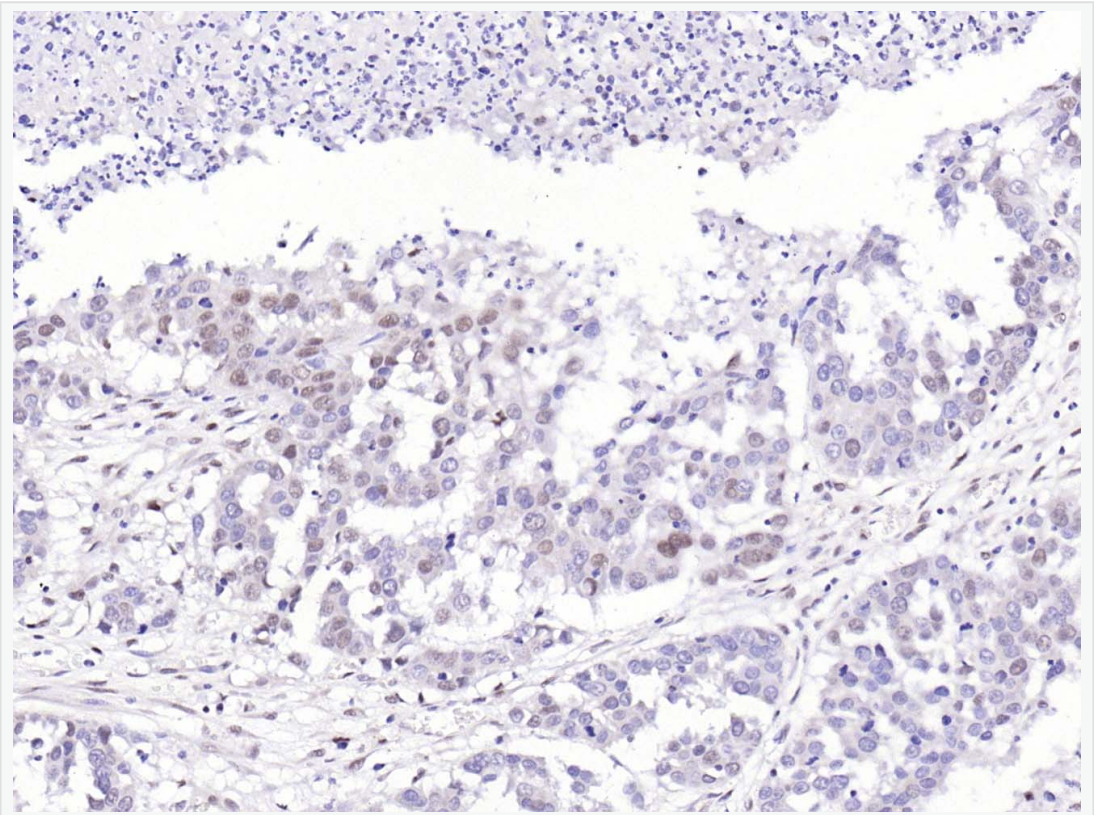
**Product  
Picture**



Paraformaldehyde-fixed, paraffin embedded (human breast carcinoma); Antigen retrieval by boiling in sodium citrate buffer (pH6.0) for 15min; Block endogenous peroxidase by 3% hydrogen peroxide for 20 minutes; Blocking buffer (normal goat serum) at 37°C for 30min; Antibody incubation with (SSB) Polyclonal Antibody, Unconjugated (SL0276R) at 1:200 overnight at 4°C, followed by operating according to SP Kit(Rabbit) (sp-0023) instructions and DAB staining.



Paraformaldehyde-fixed, paraffin embedded (human liver carcinoma); Antigen retrieval by boiling in sodium citrate buffer (pH6.0) for 15min; Block endogenous peroxidase by 3% hydrogen peroxide for 20 minutes; Blocking buffer (normal goat serum) at 37°C for 30min; Antibody incubation with (SSB) Polyclonal Antibody, Unconjugated (SL0276R) at 1:200 overnight at 4°C, followed by operating according to SP Kit(Rabbit) (sp-0023) instructions and DAB staining.



Paraformaldehyde-fixed, paraffin embedded (human lung carcinoma); Antigen retrieval by boiling in sodium citrate buffer (pH6.0) for 15min; Block endogenous peroxidase by 3% hydrogen peroxide for 20 minutes; Blocking buffer (normal goat serum) at 37°C for 30min; Antibody incubation with (SSB) Polyclonal Antibody, Unconjugated (SL0276R) at 1:200 overnight at 4°C, followed by operating according to SP Kit(Rabbit) (sp-0023) instructions and DAB staining.