



## Rabbit Anti-FoxP3 antibody

SL0269R

**Product Name** FoxP3**Chinese Name** 叉头蛋白 P3 抗体**Alias** Forkhead box protein P3; forkhead box P3; Scurfin; Forkhead box protein P3, C-terminally processed; Forkhead box protein P3 41 kDa form; JM2; AIID; IPEX; PIDX; XPID; DIETER; FOXP3\_HUMAN;**Research Area** transcriptional regulatory factor**Immunogen Species** Rabbit**Clonality** Polyclonal**React Species** Mouse,Rat**Applications** WB=1:500-2000,IHC-P=1:200-1000,IHC-F=1:200-1000,IF=1:200-1000 (Paraffin sections need antigen repair)  
not yet tested in other applications.  
optimal dilutions/concentrations should be determined by the end user.**Theoretical molecular weight** 47kDa**Detection molecular weight** 50-55 kDa**Cellular localization** The nucleus**Form** Liquid**Concentration** 1mg/ml**immunogen** KLH conjugated synthetic peptide derived from human FoxP3: 11-100/431**Lsotype** IgG**Purification** affinity purified by Protein A**Buffer Solution** Mouse,Rat1M TBS(pH7.4) with 1% BSA, Mouse,Rat3% Proclin300 and 50% Glycerol.**Storage** Shipped at 4°C. Store at -20 °C for one year. Avoid repeated freeze/thaw cycles.

**Attention**

This product as supplied is intended for research use only, not for use in human, therapeutic or diagnostic applications.

**PubMed**

[PubMed](#)

The protein encoded by this gene is a member of the forkhead/winged-helix family of transcriptional regulators. Defects in this gene are the cause of immunodeficiency polyendocrinopathy, enteropathy, X-linked syndrome (IPEX), also known as X-linked autoimmunity-immunodeficiency syndrome. Alternatively spliced transcript variants encoding different isoforms have been identified. [provided by RefSeq, Jul 2008].

**Function:**

Probable transcription factor. Plays a critical role in the control of immune response.

**Subunit:**

Interacts with IKZF3.

**Subcellular Location:**

Nucleus (Potential).

**Post-translational modifications:**

Acetylation on lysine residues stabilizes FOXP3 and promotes differentiation of T-cells into induced regulatory T-cells (iTregs) associated with suppressive functions. Deacetylated by SIRT1.

**Product  
Detail**

**DISEASE:**

Defects in FOXP3 are the cause of immunodeficiency polyendocrinopathy, enteropathy, X-linked syndrome (IPEX) [MIM:304790]; also known as X-linked autoimmunity-immunodeficiency syndrome. IPEX is characterized by neonatal onset insulin-dependent diabetes mellitus, infections, secretory diarrhea, trombocytopenia, anemia and eczema. It is usually lethal in infancy.

**Similarity:**

Contains 1 C2H2-type zinc finger.  
Contains 1 fork-head DNA-binding domain.

**SWISS:**

Q9BZS1

**Gene ID:**

50943

**Database links:**

[Entrez Gene: 50943](#) Human

[Entrez Gene: 20371](#) Mouse

[Entrez Gene: 317382](#) Rat

[Omim: 300292](#) Human

[SwissProt: Q9BZS1](#) Human

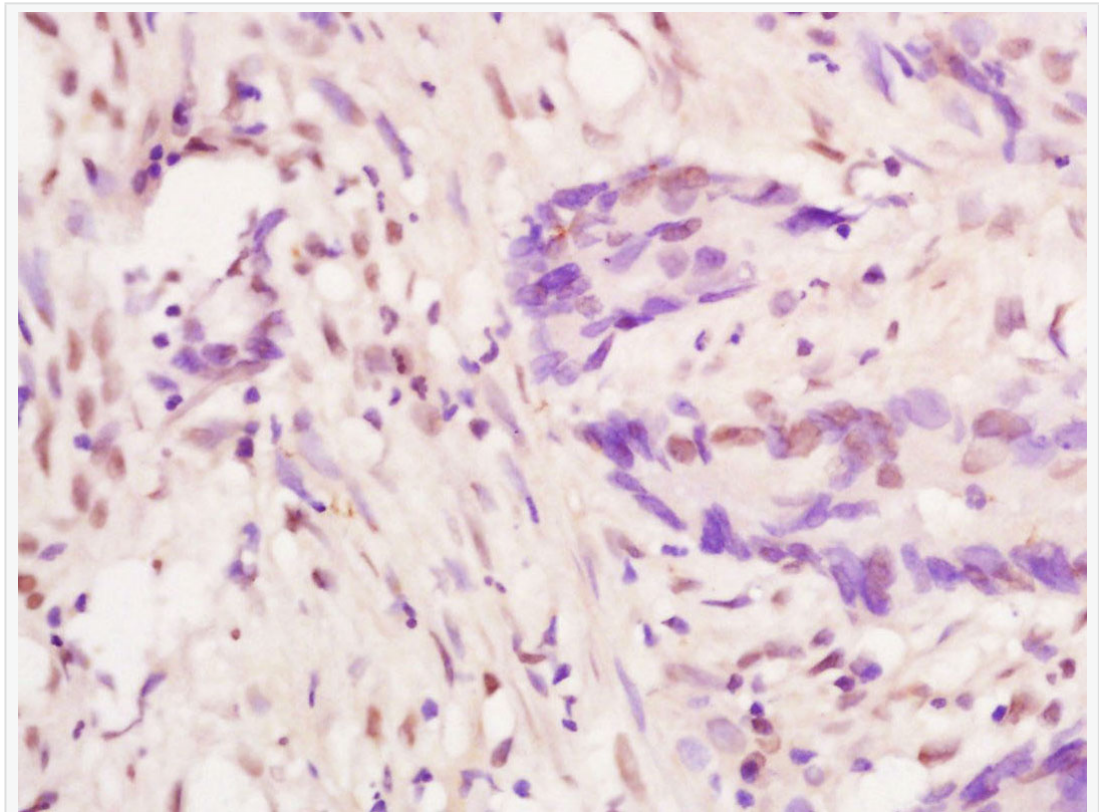
[SwissProt: Q99JB6](#) Mouse

[SwissProt: D3ZK11](#) Rat

[Unigene: 247700](#) Human

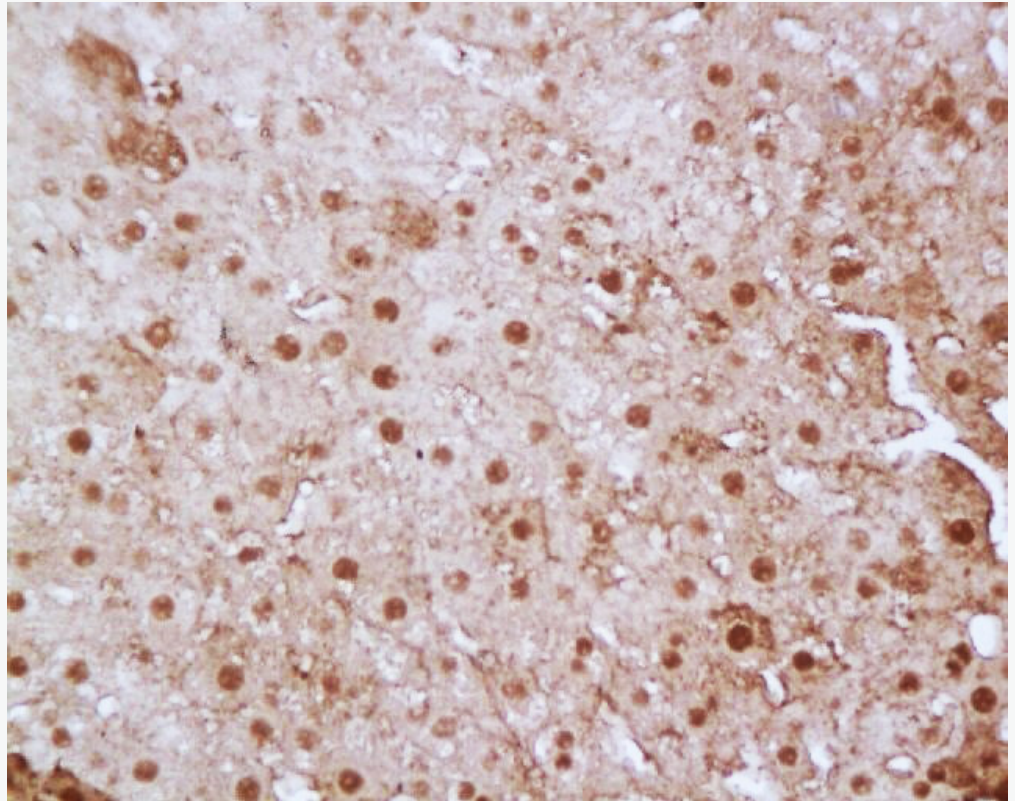
[Unigene: 182291](#) Mouse

**Product  
Picture**

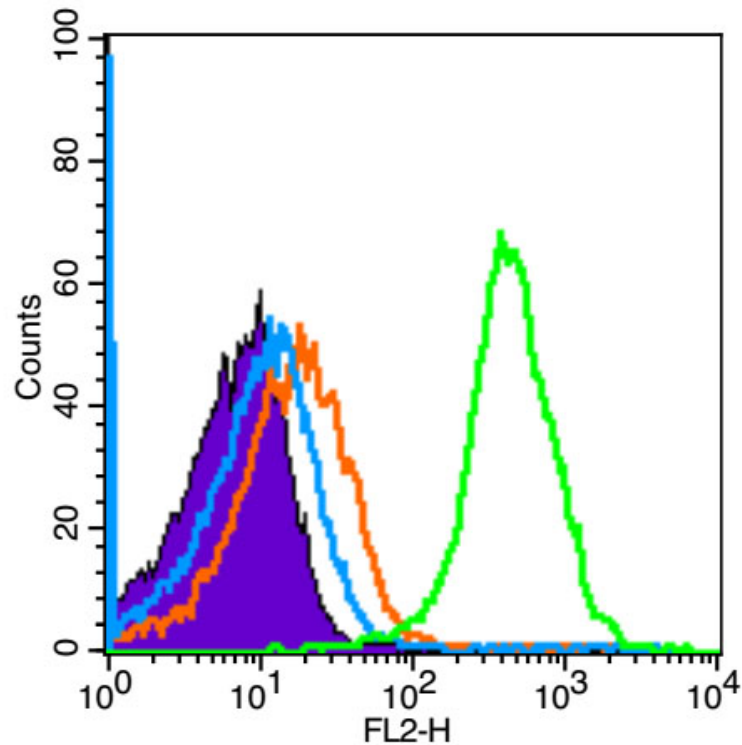


Paraformaldehyde-fixed, paraffin embedded (Human colon cancer); Antigen retrieval by boiling in sodium citrate buffer (pH6.0) for 15min; Block endogenous peroxidase by 3% hydrogen peroxide for 20 minutes; Blocking buffer (normal goat

serum) at 37°C for 30min; Antibody incubation with (FoxP3) Polyclonal Antibody, Unconjugated (SL0269R) at 1:200 overnight at 4°C, followed by operating according to SP Kit(Rabbit) (sp-0023) instructions and DAB staining.



Paraformaldehyde-fixed, paraffin embedded (Rat liver); Antigen retrieval by boiling in sodium citrate buffer (pH6.0) for 15min; Block endogenous peroxidase by 3% hydrogen peroxide for 20 minutes; Blocking buffer (normal goat serum) at 37°C for 30min; Antibody incubation with (FoxP3) Polyclonal Antibody, Unconjugated (SL0269R) at 1:200 overnight at 4°C, followed by operating according to SP Kit(Rabbit) (sp-0023) instructions and DAB staining.



Blank control (Black line): Mouse spleen (Black).

Primary Antibody (green line): Rabbit Anti-FoxP3 antibody (SL0269R)

Dilution:  $3\mu\text{g}/10^6$  cells;

Isotype Control Antibody (orange line): Rabbit IgG .

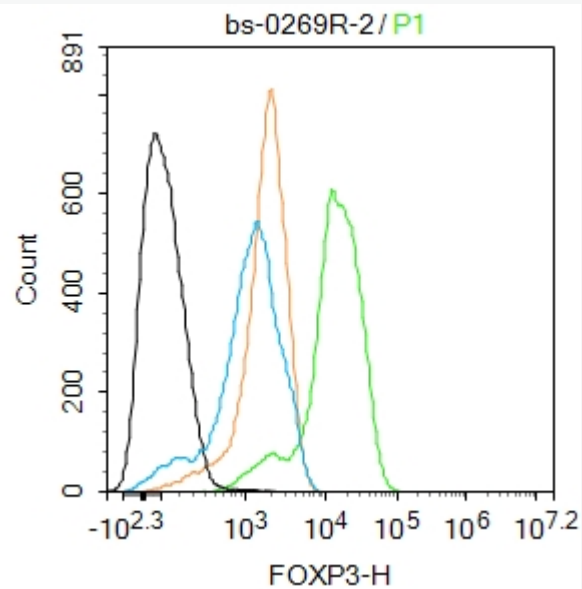
Secondary Antibody (white blue line): Goat anti-rabbit IgG-PE

Dilution:  $1\mu\text{g}/\text{test}$ .

#### Protocol

The cells were fixed with 4% PFA (10min at room temperature)and then permeabilized with 90% ice-cold methanol for 20 min at room temperature. The cells were then incubated in 5%BSA goat serum to block non-specific

protein-protein interactions for 15 min at room temperature .Cells stained with Primary Antibody for 30 min at room temperature. The secondary antibody used for 40 min at room temperature. Acquisition of 20,000 events was performed.



Blank control:MCF-7.

Primary Antibody (green line): Rabbit Anti-FOXP3 antibody (SL0269R)

Dilution: 2ug/Test;

Secondary Antibody : Goat anti-rabbit IgG-FITC

Dilution: 0.5ug/Test.

Protocol

The cells were fixed with 4% PFA (10min at room temperature)and then permeabilized with 90% ice-cold methanol for 20 min at -20°C.The cells were then incubated in 5%BSA to block non-specific protein-protein interactions for 30 min



at room temperature .Cells stained with Primary Antibody for 30 min at room temperature. The secondary antibody used for 40 min at room temperature. Acquisition of 20,000 events was performed.