

## Rabbit Anti-MAG antibody

SL0258R

**Product Name** MAG

**Chinese Name** 髓鞘相关 glycoprotein-a 抗体

**Alias** Myelin associated glycoprotein; L-MAG; brain-specific neuronal polypeptide 1B236; Myelin-associated glycoprotein; Sialic acid-binding Ig-like lectin 4a; Siglec-4a; Brain neuron cytoplasmic protein 3; MAG\_HUMAN; GMA; S MAG; Siglec 4a; SIGLEC4A.

**Research Area** Cell biology Neurobiology

**Immunogen Species** Rabbit

**Clonality** Polyclonal

**React Species** Human, Rat, (predicted: Mouse, Dog, Cow, Horse, )

**Applications** WB=1:500-2000,ELISA=1:5000-10000,IHC-P=1:100-500,IHC-F=1:100-500,IF=1:100-500,Flow cytometry  
not yet tested in other applications.  
optimal dilutions/concentrations should be determined by the end user.

**Theoretical molecular weight** 67kDa

**Cellular localization** The cell membrane

**Form** Liquid

**Concentration** 1mg/ml

**immunogen** KLH conjugated synthetic peptide derived from human MAG: 551-626/626 <Cytoplasmic>

**Lsotype** IgG

**Purification** affinity purified by Protein A

**Buffer Solution** 1M TBS(pH7.4) with 1% BSA, 3% Proclin300 and 50% Glycerol.

**Storage** Shipped at 4°C. Store at -20 °C for one year. Avoid repeated freeze/thaw cycles.

**Attention** This product as supplied is intended for research use only, not for use in human, therapeutic or diagnostic applications.

**PubMed** [PubMed](#)

**Product** MAG (myelin associated glycoprotein) is a Adhesion molecule in postnatal neural development

---

**Detail**

sialic-acid dependent cell-cell interactions between neuronal and myelinating cells. Preferentially binds to alpha2,3-linked sialic acid. Isoform L-MAG is critical for the formation of myelin in the CNS, while S-MAG is sufficient to maintain the integrity of myelin in PNS. Binds to RTN4R. single-pass type I transmembrane protein. Expressed by myelinating glial cells in the central and peripheral nervous system. Detected on oligodendrocyte processes before formation of compact myelin. Restricted to the periaxonal space of myelination. Isoform S-MAG is the predominant isoform in CNS and PNS of the adult. In CNS, L-MAG is the major form synthesized early in development, and it persists as a significant proportion of total MAG in the adult. In the PNS isoform L-MAG is expressed at modest levels during development; it is absent in the adult. Belongs to the immunoglobulin superfamily. SIGLEC (sialic acid binding Ig-like lectin) family.

**Function:**

Adhesion molecule in postnatal neural development that mediates sialic-acid dependent cell-cell interactions between neuronal and myelinating cells. Preferentially binds to alpha-2,3-linked sialic acid.

**Subunit:**

Binds to RTN4R

**Subcellular Location:**

Membrane.

**Similarity:**

Belongs to the immunoglobulin superfamily. SIGLEC (sialic acid binding Ig-like lectin) family. Contains 4 Ig-like C2-type (immunoglobulin-like) domains. Contains 1 Ig-like V-type (immunoglobulin-like) domain.

**SWISS:**

P20916

**Gene ID:**

4099

**Database links:**

[Entrez Gene: 4099](#) Human

[Entrez Gene: 17136](#) Mouse

[Entrez Gene: 29409](#) Rat

[Omim: 159460](#) Human

[SwissProt: P20916](#) Human

[SwissProt: P20917](#) Mouse

[SwissProt: P07722](#) Rat

[Unigene: 643440](#) Human

[Unigene: 241355](#) Mouse

[Unigene: 87331](#) Rat

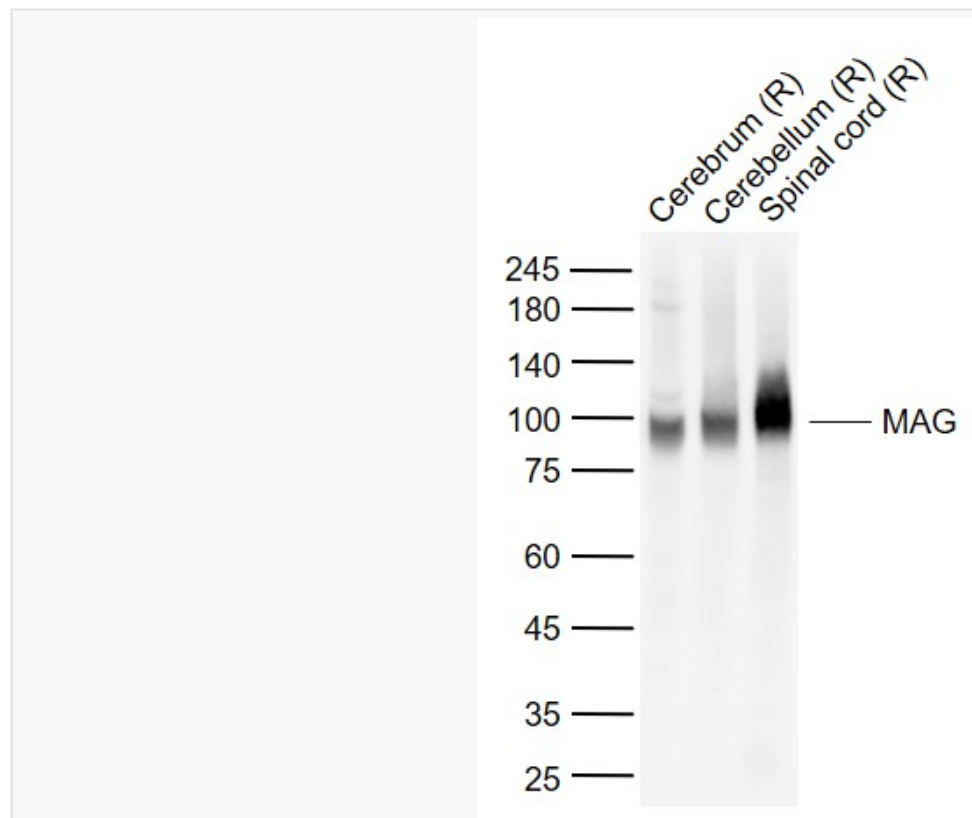
髓鞘相关 glycoprotein (MAG-a) 又称: 髓磷脂相关的球蛋白 a

髓鞘相关 glycoprotein(myelin-associated glycoprotein, MAG)是免疫球蛋白超家族成员, 它由少突胶质细胞和外周神经系统的施万细胞表达。

MAG 定位于直接和轴突相接触的髓鞘膜的最里层,它通过介导胶质细胞与轴突的相互作用, 参与髓鞘形成及其完整性的维持。同时 MAG 也是髓鞘来源的神经生长抑制因子的主要成分。在神经发育的不同阶段。

MAG 显示不同的功能: 即发育期促进轴突生长,成熟期抑制轴突生长。其抑制作用主要由抑制分子的共同受体 NgR 介导, 在神经营养因子受体 p75NTR 以及小 GTP 酶 Rho 等信号分子参与下完成。

Product  
Picture



Sample:

Lane 1: Rat Cerebrum tissue lysates

Lane 2: Rat Cerebellum tissue lysates

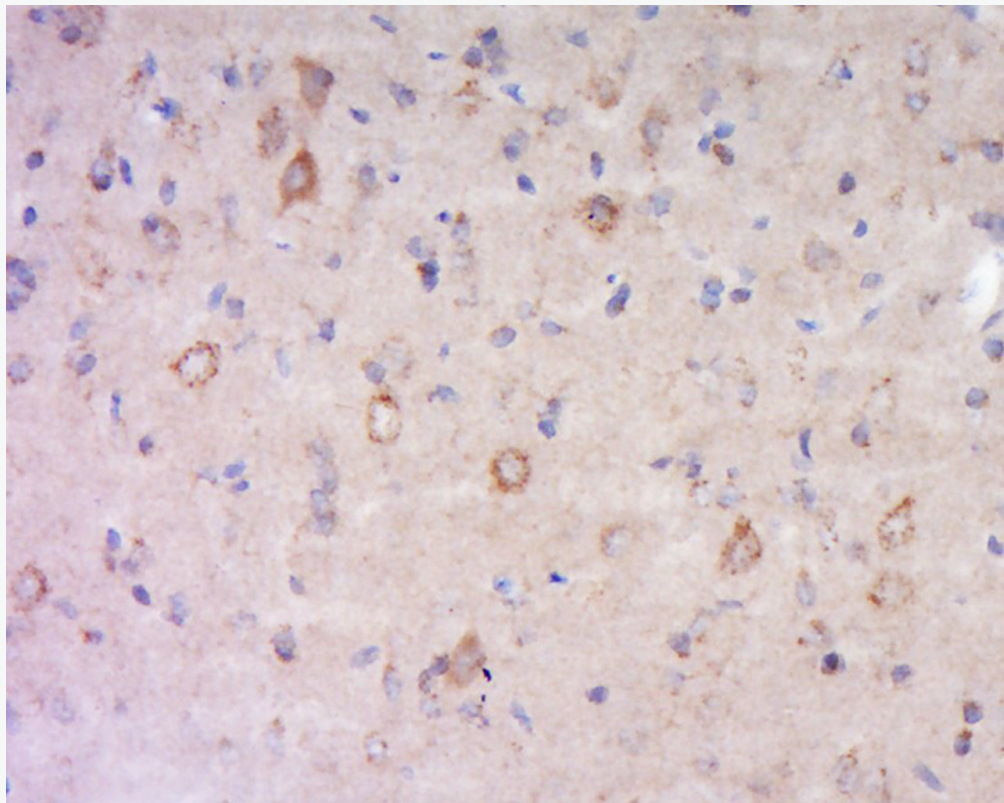
Lane 3: Rat Spinal cord tissue lysates

Primary: Anti- MAG (SL0258R) at 1/1000 dilution

Secondary: IRDye800CW Goat Anti-Rabbit IgG at 1/20000 dilution

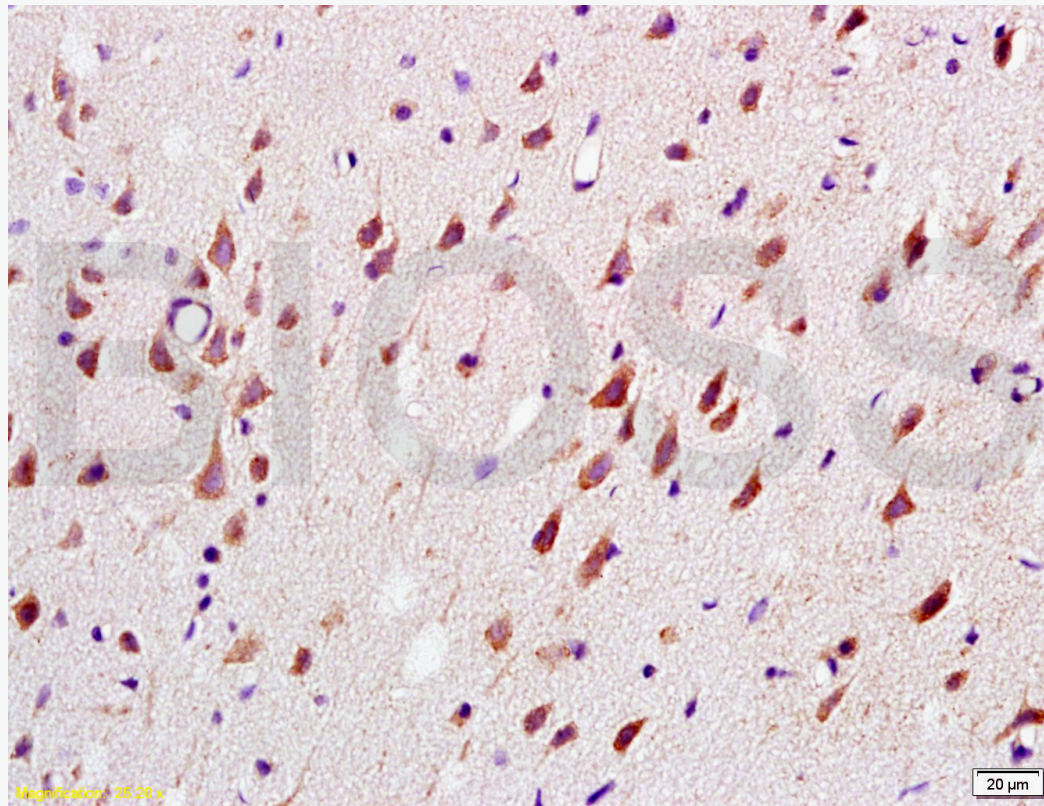
Predicted band size: 67 kDa

Observed band size: 98 kDa



Tissue/cell: rat brain tissue; 4% Paraformaldehyde-fixed and paraffin-embedded;

Antigen retrieval: citrate buffer ( 1M, pH 6.0 ), Boiling bathing for 15min; Block endogenous  
3% Hydrogen peroxide for 30min; Blocking buffer (normal goat serum,C-0005) at 37°C for 2  
Incubation: Anti-MAG Polyclonal Antibody, Unconjugated(SL0258R) 1:600, overnight at 4°C  
conjugation to the secondary antibody(SP-0023) and DAB(C-0010) staining



Tissue/cell: rat brain tissue; 4% Paraformaldehyde-fixed and paraffin-embedded;  
Antigen retrieval: citrate buffer ( 1M, pH 6.0 ), Boiling bathing for 15min; Block endogenous  
3% Hydrogen peroxide for 30min; Blocking buffer (normal goat serum,C-0005) at 37°C for 2  
Incubation: Anti-MAG-a/L-MAG Polyclonal Antibody, Unconjugated(SL0258R) 1:200, over  
followed by conjugation to the secondary antibody(SP-0023) and DAB(C-0010) staining



SunLong Biotech Co.,LTD  
Tel: 0086-571-56623320 Fax:0086-571-56623318  
E-mail:sales@sunlongbiotech.com  
www.sunlongbiotech.com

---