

Rabbit Anti-CRF antibody

SL0246R

Product Name CRF

Chinese Name 促肾上腺皮质激素释放因子/促肾上皮质激素释放激素抗体

Alias Corticoliberin; Corticoliberin precursor; Corticotropin releasing factor; Corticotropin releasing hormone; Corticotropin releasing hormone deficiency included; crf; crh; crh deficiency included; corticoliberin preproprotein; CRF_HUMAN; Corticotropin-releasing factor; CRH1; CRH; Corticotropin-releasing hormone.

Research Area Neurobiology Endocrinopathy

Immunogen Species Rabbit

Clonality Polyclonal

React Species Mouse,Rat (predicted:Human)

Applications WB=1:500-2000,ELISA=1:1000-5000 (Paraffin sections need antigen repair)
not yet tested in other applications.
optimal dilutions/concentrations should be determined by the end user.

Theoretical molecular weight 5/22kDa

Cellular localization Secretory protein

Form Liquid

Concentration 1mg/ml

immunogen KLH conjugated synthetic peptide derived from human CRF: 185-196/196

Lsotype IgG

Purification affinity purified by Protein A

Buffer Solution 1M TBS(pH7.4) with 1% BSA, 3% Proclin300 and 50% Glycerol.

Storage Shipped at 4°C. Store at -20 °C for one year. Avoid repeated freeze/thaw cycles.

Attention This product as supplied is intended for research use only, not for use in human, therapeutic or diagnostic applications.

PubMed [PubMed](#)

Corticotropin-releasing hormone is secreted by the paraventricular nucleus (PVN) of the hypothalamus in response to stress. Marked reduction in this protein has been observed in association with Alzheimer disease and autosomal recessive hypothalamic corticotropin deficiency has multiple and potentially fatal metabolic consequences including hypoglycemia and hepatitis. In addition to production in the hypothalamus, this protein is also synthesized in peripheral tissues, such as T lymphocytes and is highly expressed in the placenta. In the placenta it is a marker that determines the length of gestation and the timing of parturition and delivery. A rapid increase in circulating levels of the hormone occurs at the onset of parturition, suggesting that, in addition to its metabolic functions, this protein may act as a trigger for parturition. [provided by RefSeq, Apr 2010].

Function:

This hormone from hypothalamus regulates the release of corticotropin from pituitary gland.

Subunit:

Interacts (via C-terminus) with CRFR1 (via N-terminalv extracellular domain).

Subcellular Location:

Secreted.

**Product
Detail**

Similarity:

Belongs to the sauvagine/corticotropin-releasing factor/urotensin I family.

SWISS:

P06850

Gene ID:

1392

Database links:

[Entrez Gene: 1392](#) Human

[Entrez Gene: 12918](#) Mouse

[Entrez Gene: 81648](#) Rat

[Omim: 122560](#) Human

[SwissProt: P06850](#) Human

[SwissProt: Q8CIT0](#) Mouse

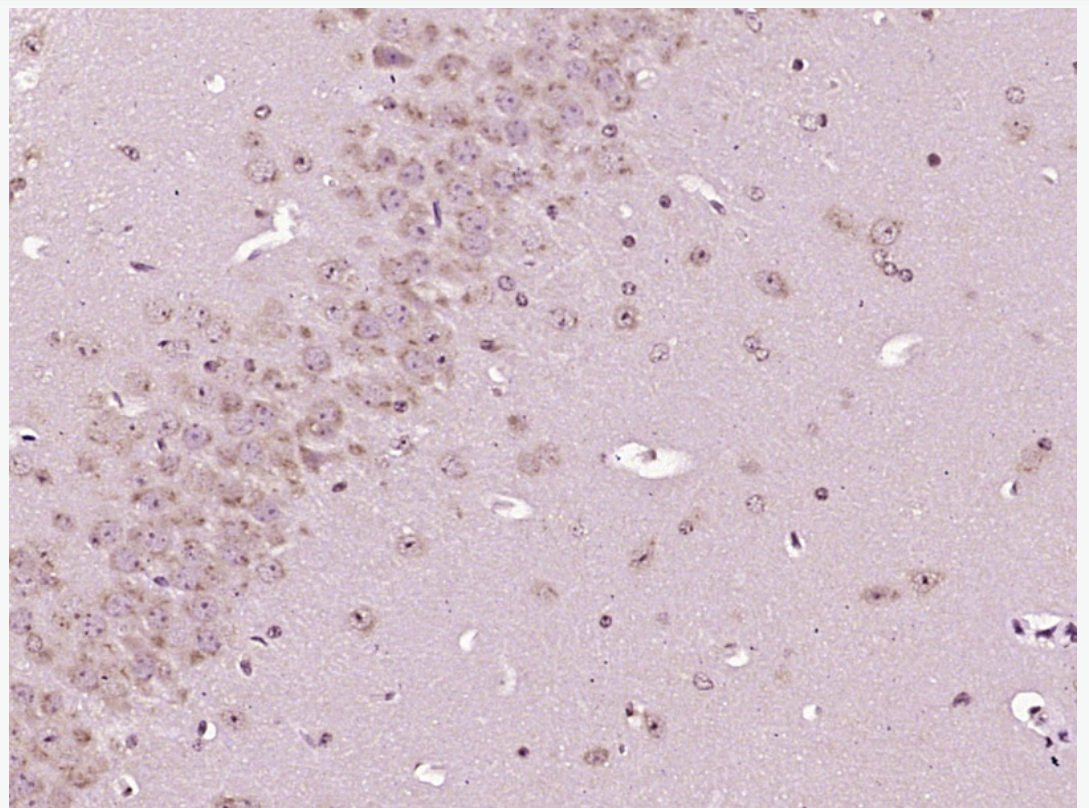
[SwissProt: P01143](#) Rat

[Unigene: 75294](#) Human

[Unigene: 290689](#) Mouse

[Unigene: 10349](#) Rat

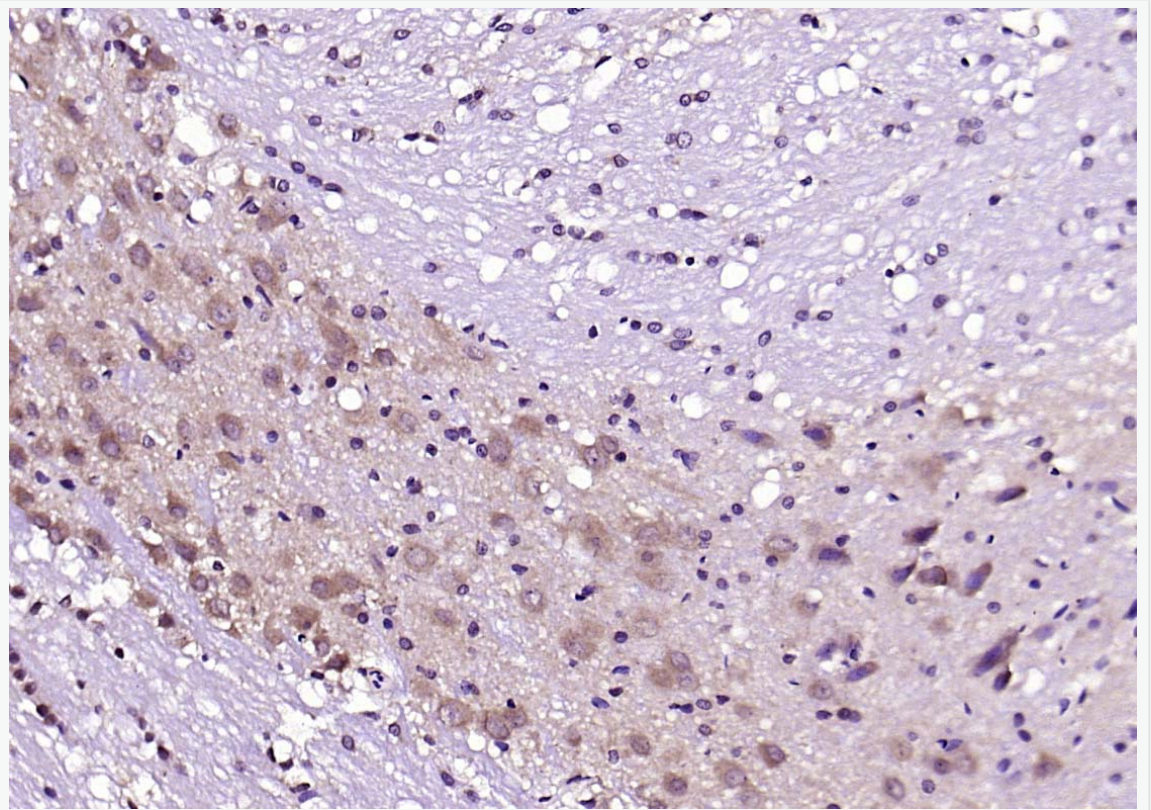
CRF 阳性神经元的胞体广泛分布于下丘脑的室旁核、背缝核和蓝斑核，这些区域也是去甲肾上腺素（NE）神经元与 5-羟色胺（5-HT）神经元密集的区域。CRF 既具有神经递质的性质又具有神经激素的性质。CRF 是联系神经系统与内分泌系统的桥梁，在情感障碍疾患如焦虑和抑郁的发病中发挥重要作用。



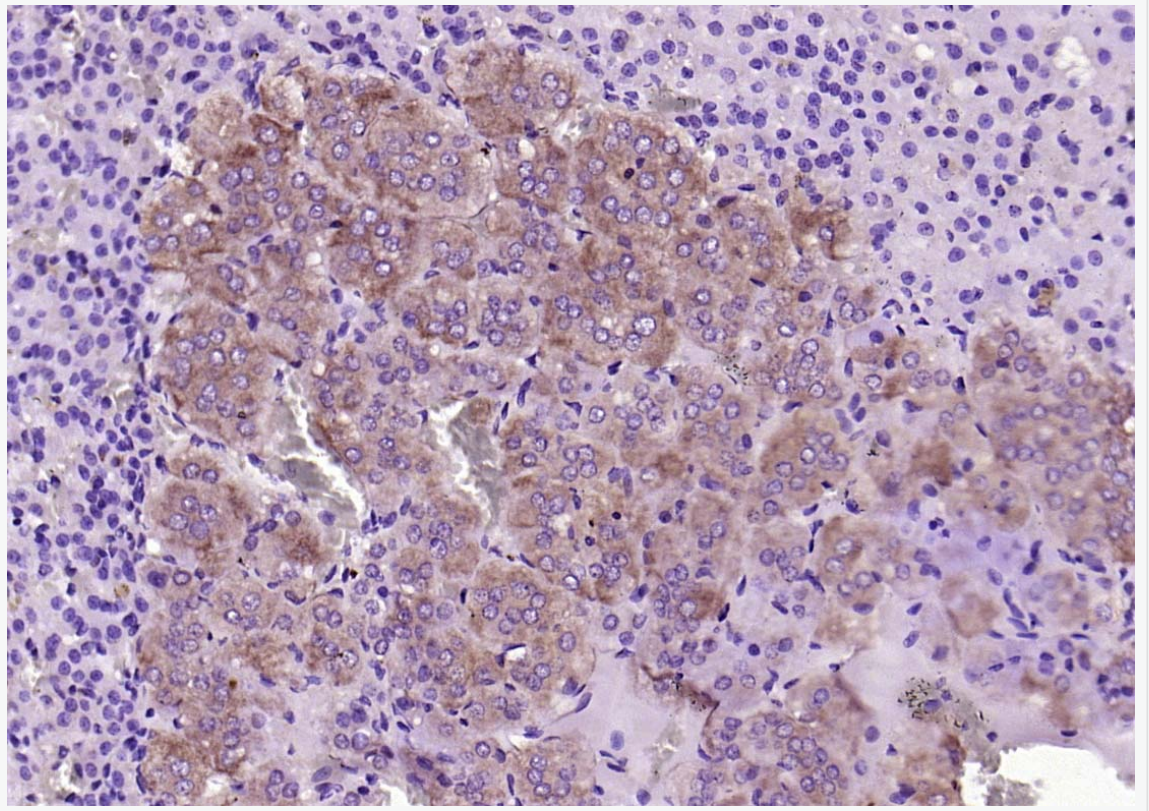
**Product
Picture**

Paraformaldehyde-fixed, paraffin embedded (Mouse brain); Antigen retrieval by boiling in sodium citrate buffer (pH6.0) for 15min; Block endogenous peroxidase by 3% hydrogen peroxide for 20 minutes; Blocking buffer (normal goat serum) at 37°C for 30min; Antibody incubation with (CRF) Polyclonal Antibody, Unconjugated (SL0246R) at 1:400 overnight at 4°C, followed by operating according to SP

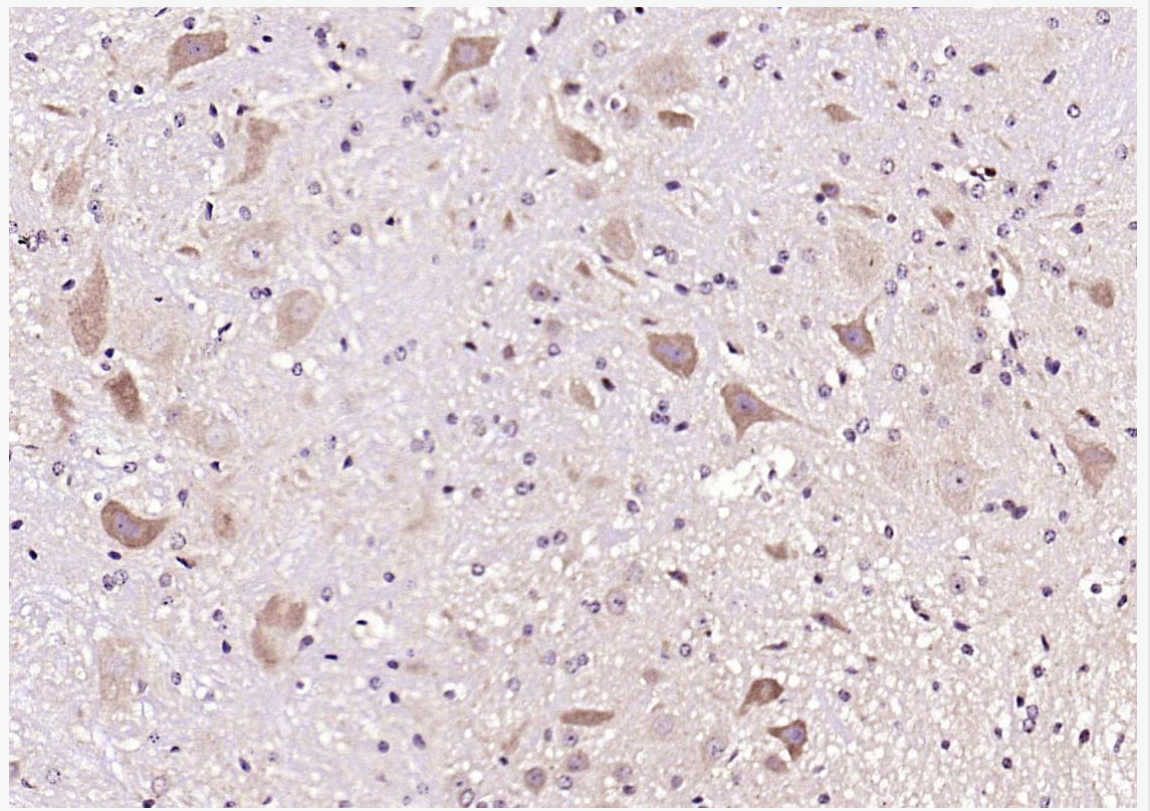
Kit(Rabbit) (sp-0023) instructions and DAB staining.



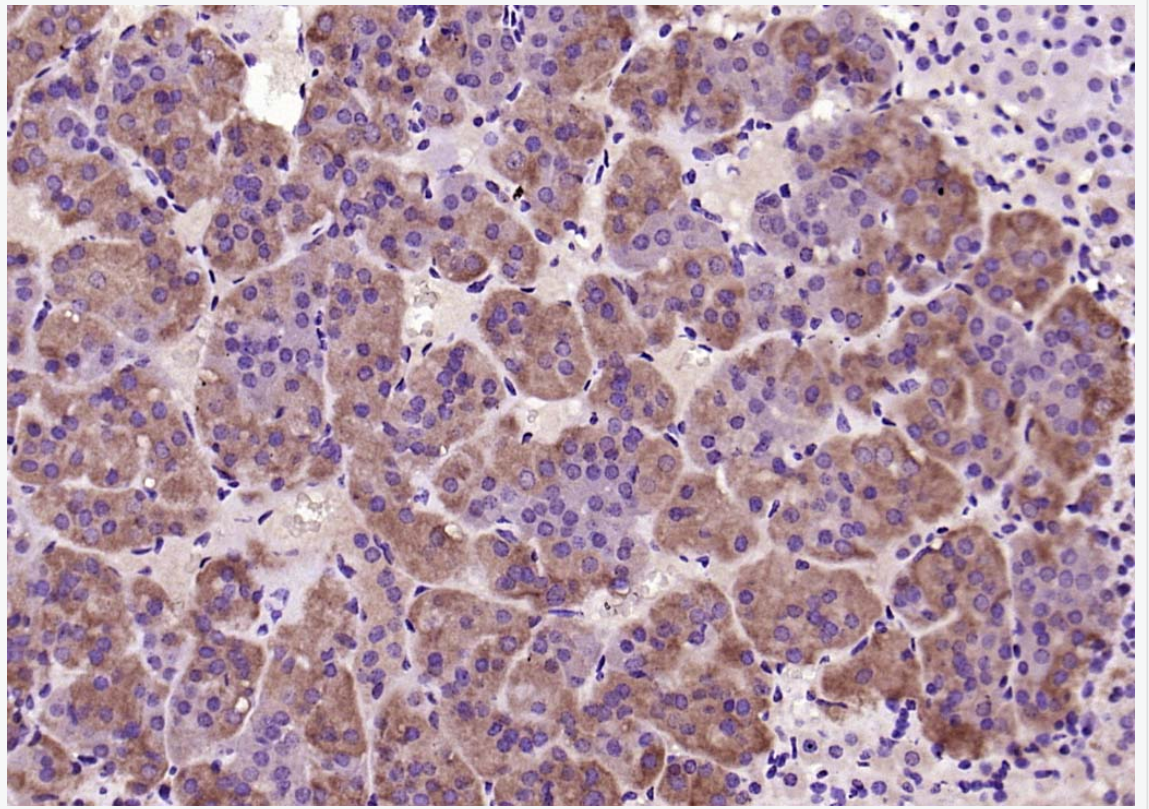
Paraformaldehyde-fixed, paraffin embedded (rat cerebellum); Antigen retrieval by boiling in sodium citrate buffer (pH6.0) for 15min; Block endogenous peroxidase by 3% hydrogen peroxide for 20 minutes; Blocking buffer (normal goat serum) at 37°C for 30min; Antibody incubation with (CRF) Polyclonal Antibody, Unconjugated (SL0246R) at 1:200 overnight at 4°C, followed by operating according to SP Kit(Rabbit) (sp-0023) instructions and DAB staining.



Paraformaldehyde-fixed, paraffin embedded (rat adrenal gland); Antigen retrieval by boiling in sodium citrate buffer (pH6.0) for 15min; Block endogenous peroxidase by 3% hydrogen peroxide for 20 minutes; Blocking buffer (normal goat serum) at 37°C for 30min; Antibody incubation with (CRF) Polyclonal Antibody, Unconjugated (SL0246R) at 1:200 overnight at 4°C, followed by operating according to SP Kit(Rabbit) (sp-0023) instructions and DAB staining.



Paraformaldehyde-fixed, paraffin embedded (mouse cerebellum); Antigen retrieval by boiling in sodium citrate buffer (pH6.0) for 15min; Block endogenous peroxidase by 3% hydrogen peroxide for 20 minutes; Blocking buffer (normal goat serum) at 37°C for 30min; Antibody incubation with (CRF) Polyclonal Antibody, Unconjugated (SL0246R) at 1:200 overnight at 4°C, followed by operating according to SP Kit(Rabbit) (sp-0023) instructions and DAB staining.



Paraformaldehyde-fixed, paraffin embedded (mouse adrenal gland); Antigen retrieval by boiling in sodium citrate buffer (pH6.0) for 15min; Block endogenous peroxidase by 3% hydrogen peroxide for 20 minutes; Blocking buffer (normal goat serum) at 37°C for 30min; Antibody incubation with (CRF) Polyclonal Antibody, Unconjugated (SL0246R) at 1:200 overnight at 4°C, followed by operating according to SP Kit(Rabbit) (sp-0023) instructions and DAB staining.