

## Rabbit Anti-PLGF antibody

SL0234R

<b>Product Name</b>	PLGF
<b>Chinese Name</b>	胎盘生长因子抗体
<b>Alias</b>	Placenta growth factor; PGF; PGFL; PIGF; Placental growth factor vascular endothelial growth factor related protein; PIGF 2; PLGF; PIGF2; PLGF_MOUSE; Vascular endothelial growth factor related protein.
<b>Research Area</b>	Tumour Cardiovascular Growth factors and hormones vascular endothelial cell The new supersedes the old
<b>Immunogen Species</b>	Rabbit
<b>Clonality</b>	Polyclonal
<b>React Species</b>	Human Mouse WB=1:500-2000
<b>Applications</b>	not yet tested in other applications. optimal dilutions/concentrations should be determined by the end user.
<b>Theoretical molecular weight</b>	16kDa
<b>Cellular localization</b>	Secretory protein
<b>Form</b>	Liquid
<b>Concentration</b>	1mg/ml
<b>immunogen</b>	KLH conjugated synthetic peptide derived from mouse PLGF: 131-158/158
<b>Lsotype</b>	IgG
<b>Purification</b>	affinity purified by Protein A
<b>Buffer Solution</b>	Human,Mouse1M TBS(pH7.4) with 1% BSA, Human,Mouse3% Proclin300 and 50% Glycerol.
<b>Storage</b>	Shipped at 4°C. Store at -20 °C for one year. Avoid repeated freeze/thaw cycles.
<b>Attention</b>	This product as supplied is intended for research use only, not for use in human, therapeutic or diagnostic applications.
<b>PubMed</b>	<a href="#">PubMed</a>
<b>Product Detail</b>	The placental-derived growth factor (PIGF) is a dimeric glycoprotein showing

a high degree of sequence similarity to the vascular endothelial growth factor. Alternative splicing of the PIGF primary transcript gives rise to two forms, named PIGF-1 and PIGF-2, which differ only in the insertion of a highly basic 21-amino acid stretch at the carboxyl end. The presence of the PIGF mRNA in thyroid, placenta, lung, and goiter has indicated the tissues where this factor functions. However, the role of PIGF in vascular development has not yet been clearly established.

**Function:**

Growth factor active in angiogenesis and endothelial cell growth, stimulating their proliferation and migration. It binds to the receptor FLT1/VEGFR-1. Isoform PIGF-2 binds NRP1/neuropilin-1 and NRP2/neuropilin-2 in a heparin-dependent manner.

**Subunit:**

Antiparallel homodimer; disulfide-linked. Also found as heterodimer with VEGFA/VEGF (By similarity).

**Subcellular Location:**

Secreted. The three isoforms are secreted but PIGF-2 appears to remain cell attached unless released by heparin.

**Tissue Specificity:**

While the three isoforms are present in most placental tissues, PIGF-2 is specific to early (8 week) placenta and only PIGF-1 is found in the colon and mammary carcinomas.

**Similarity:**

Belongs to the PDGF/VEGF growth factor family.

**SWISS:**

P49763

**Gene ID:**

18654

**Database links:**

[Entrez Gene: 5228](#) Human

[Entrez Gene: 18654](#) Mouse

[Omim: 601121](#) Human

[SwissProt: P49763](#) Human

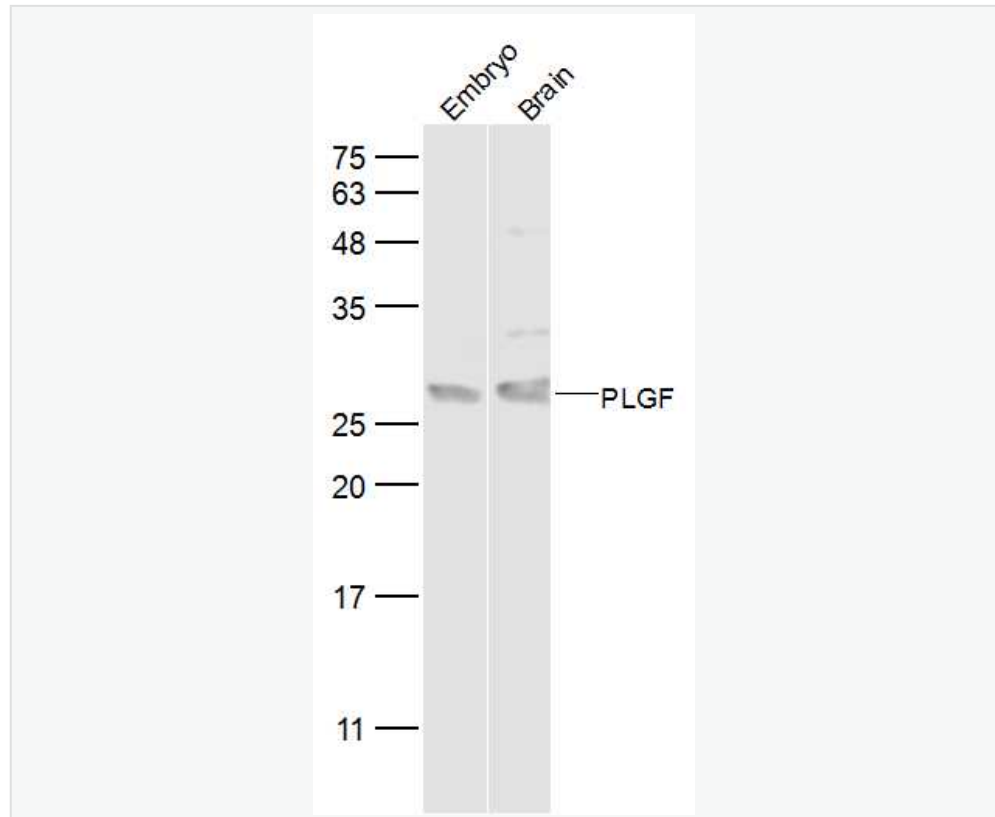
[SwissProt: P49764](#) Mouse

[Unigene: 252820](#) Human

[Unigene: 4809](#) Mouse

PLGF 胎盘生长因子是血管生长因子家族成员之一，是动脉粥样硬化斑块不稳定的主要炎性激活物，因此它可作为 ACS 患者风险预测的生物学 Marker.尿胎盘生长因子水平可预测先兆子痫危险.研究人员发现，在疾病发作前的 6 到 8 周，先兆子痫患者尿液中的胎盘生长因子水平急剧下降，这种新的尿检方法使提前 1 到 2 个月预测先兆子痫成为可能。亦有研究人员正在从事胎盘生长因子与肺气肿，胃癌，肠癌等方面的研究。

### Product Picture



Sample:

Embryo (Mouse) Lysate at 40 ug

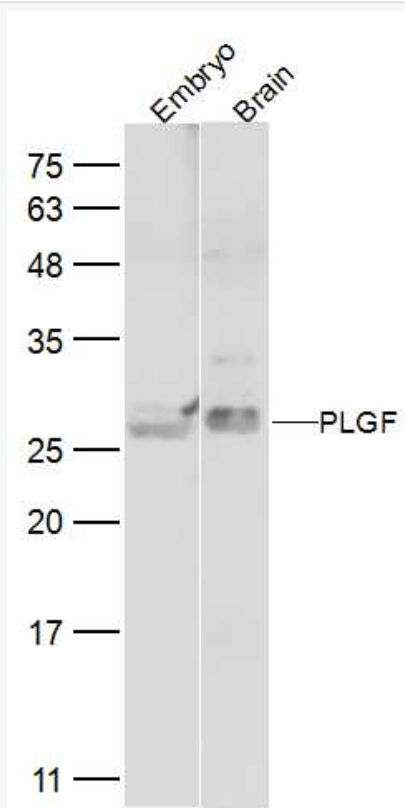
Brain (Mouse) Lysate at 40 ug

Primary: Anti-PLGF (SL0234R) at 1/500 dilution

Secondary: IRDye800CW Goat Anti-Rabbit IgG at 1/20000 dilution

Predicted band size: 16 kD

Observed band size: 27 kD



Sample:

Embryo (Mouse) Lysate at 40 ug

Brain (Mouse) Lysate at 40 ug

Primary:Anti-PLGF (SL0234R) at 1/2000 dilution

Secondary: IRDye800CW Goat Anti-Rabbit IgG at 1/20000 dilution



SunLong Biotech Co.,LTD  
Tel: 0086-571-56623320 Fax:0086-571-56623318  
E-mail:sales@sunlongbiotech.com  
www.sunlongbiotech.com

---

Predicted band size: 16 kD

Observed band size: 27 kD