

## Rabbit Anti-GHRH antibody

SL0205R

<b>Product Name</b>	GHRH
<b>Chinese Name</b>	生长激素释放激素抗体
<b>Alias</b>	GRF; GHRF; GHRH; Somatoliberin precursor; Somatocrinin; Sermorelin; SLIB_HUMAN.
<b>Research Area</b>	immunology Neurobiology
<b>Immunogen Species</b>	Rabbit
<b>Clonality</b>	Polyclonal
<b>React Species</b>	Rat (predicted:Human,Mouse,Pig,Cow) IHC-P=1:100-500,IHC-F=1:100-500,IF=1:100-500 (Paraffin sections need antigen repair)
<b>Applications</b>	not yet tested in other applications. optimal dilutions/concentrations should be determined by the end user.
<b>Theoretical molecular weight</b>	5kDa
<b>Cellular localization</b>	Secretory protein
<b>Form</b>	Liquid
<b>Concentration</b>	1mg/ml
<b>immunogen</b>	KLH conjugated synthetic peptide derived from human GHRF: 32-59/103
<b>Lsotype</b>	IgG
<b>Purification</b>	affinity purified by Protein A
<b>Buffer Solution</b>	1M TBS(pH7.4) with 1% BSA, 3% Proclin300 and 50% Glycerol.
<b>Storage</b>	Shipped at 4°C. Store at -20 °C for one year. Avoid repeated freeze/thaw cycles.
<b>Attention</b>	This product as supplied is intended for research use only, not for use in human, therapeutic or diagnostic applications.
<b>PubMed</b>	<a href="#">PubMed</a>
<b>Product</b>	GHRF encoded by this gene belongs to the glucagon family and is a preproprotein that is

## Detail

produced in the hypothalamus. The preproprotein is cleaved to form a 44 aa factor, also called somatocrinin, that acts to stimulate growth hormone release from the pituitary. Variant receptors for somatocrinin have been found in several types of tumors, and antagonists of these receptors can inhibit the growth of the tumors. Defects in this gene are a cause of dwarfism, while hypersecretion of the encoded protein is a cause of gigantism.

### Function:

GRF is released by the hypothalamus and acts on the adenohipophyse to stimulate the secretion of growth hormone.

### Subcellular Location:

Secreted.

### Similarity:

Belongs to the glucagon family.

### SWISS:

P01286

### Gene ID:

2691

### Database links:

[Entrez Gene: 2691](#) Human

[GenBank: NP\\_066567.1](#) Human

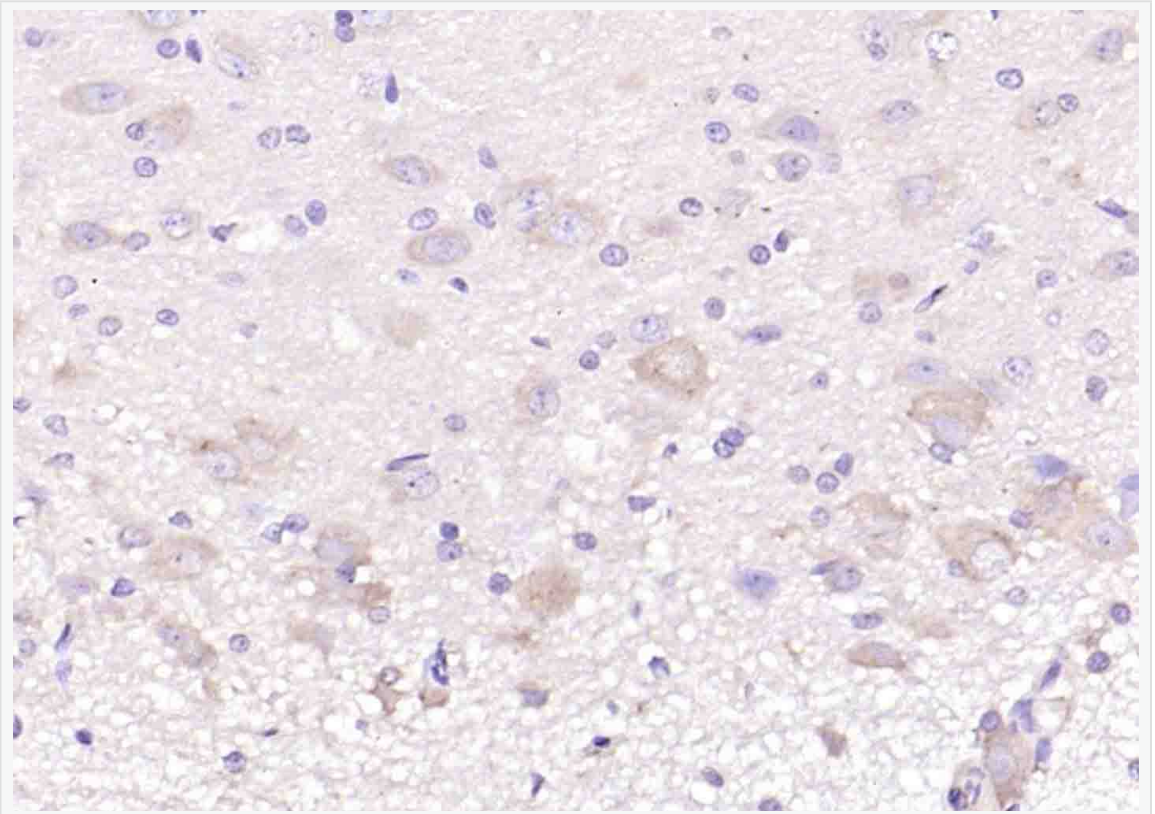
[Omim: 139190](#) Human

[SwissProt: P01286](#) Human

[Unigene: 37023](#) Human

GHRF 生长激素释放因子是下丘脑分泌的激素，刺激脑垂体分泌生长激素。

**Product  
Picture**



Paraformaldehyde-fixed, paraffin embedded (rat brain); Antigen retrieval by boiling in sodium citrate buffer (pH6.0) for 15min; Block endogenous peroxidase by 3% hydrogen peroxide for 20 minutes; Blocking buffer (normal goat serum) at 37°C for 30min; Antibody incubation with (GHRH) Polyclonal Antibody, Unconjugated (SL0205R) at 1:200 overnight at 4°C, followed by operating according to SP Kit(Rabbit) (sp-0023) instructions and DAB staining.