

Rabbit Anti-Big endothelin-1 antibody

SL0202R

Product Name Big endothelin-1

Chinese Name 内皮素 1 抗体

Alias EDN1_HUMAN; Big endothelin 1; EDN 1; EDN1; EDN1 protein; Endothelin1; Endothelin 1; Endothelin-1; ET 1; ET1; OTTHUMP00000039245; PPET1; Preproendothelin 1; Preproendothelin1.

Research Area Cardiovascular immunology Neurobiology

Immunogen Species Rabbit

Clonality Polyclonal

React Species Human,Mouse,Rat

Applications WB=1:500-2000,IHC-P=1:100-500,IHC-F=1:100-500,IF=1:100-500 (Paraffin sections need antigen repair)
not yet tested in other applications.
optimal dilutions/concentrations should be determined by the end user.

Theoretical molecular weight 22kDa

Cellular localization Secretory protein

Form Liquid

Concentration 1mg/ml

immunogen KLH conjugated synthetic peptide derived from human Big endothelin-1: 81-212/212

Lsotype IgG

Purification affinity purified by Protein A

Buffer Solution Human,Mouse,Rat1M TBS(pH7.4) with 1% BSA, Human,Mouse,Rat3% Proclin300 and 50% Glycerol.

Storage Shipped at 4°C. Store at -20 °C for one year. Avoid repeated freeze/thaw cycles.

Attention This product as supplied is intended for research use only, not for use in human, therapeutic or diagnostic applications.

PubMed [PubMed](#)

Endothelins (ET) show potent constrictor activity in vascular and non-vascular smooth muscle. This family of 21-amino acid peptides exists in at least three isoforms - ET-1, ET-2, and ET-3, and is produced in endothelial and epithelial cells. ET's can mediate biological effects in cells and tissues, and have been shown to bind to an ET receptor in the lung, kidney, heart, and liver. Endothelin 1 is expressed in lung, placental stem villi vessels and in cultured placental vascular smooth muscle cells.

Function:

Endothelins are endothelium-derived vasoconstrictor peptides.

Subcellular Location:

Secreted.

Tissue Specificity:

Expressed in lung, placental stem villi vessels and in cultured placental vascular smooth muscle cells.

Similarity:

Belongs to the endothelin/sarafotoxin family.

SWISS:

P05305

Gene ID:

1906

Database links:

[Entrez Gene: 1906](#) Human

[Entrez Gene: 13614](#) Mouse

[Entrez Gene: 24323](#) Rat

[Omim: 131240](#) Human

[SwissProt: P05305](#) Human

[SwissProt: P22387](#) Mouse

[SwissProt: P22388](#) Rat

[Unigene: 511899](#) Human

[Unigene: 713645](#) Human

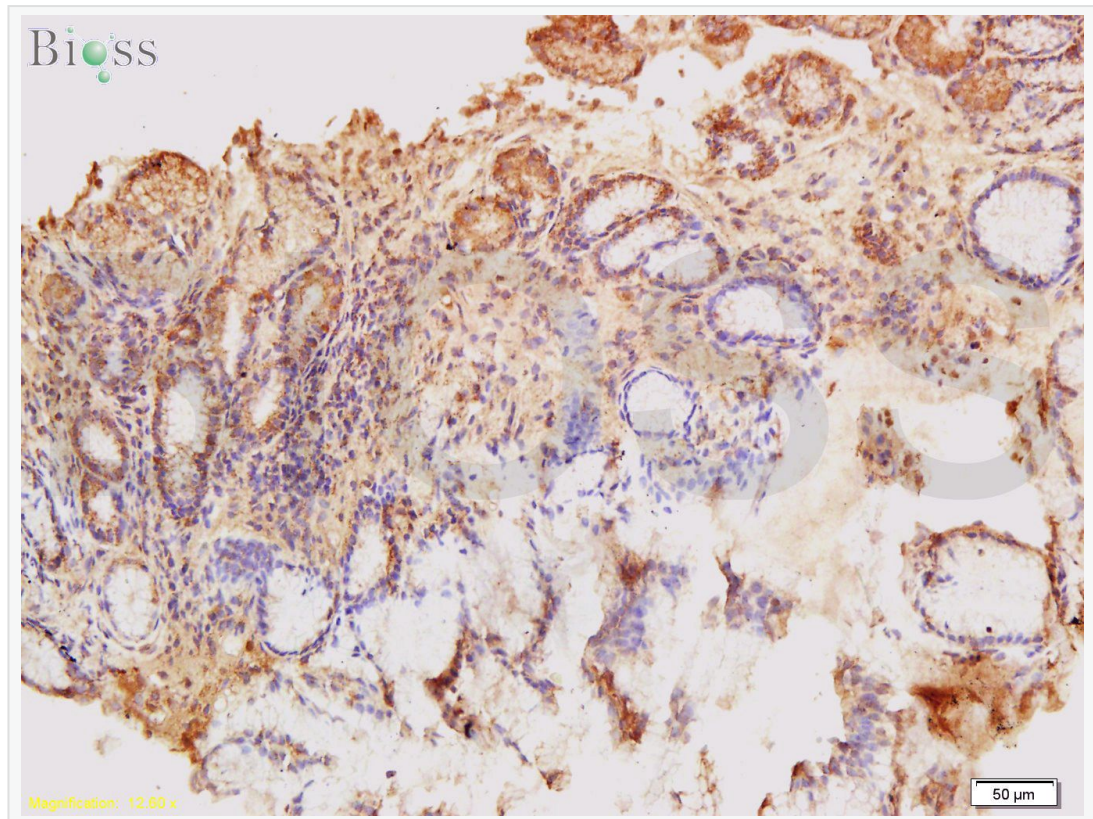
[Unigene: 10918](#) Rat

**Product
Detail**

内皮素(Endothelin-1,ET)是一种强的血管收缩剂,分为 ET-1,ET-2,ET-3 三种,ET-1 主要在 endothelial cells 中表达,而 ET-2 和 ET-3 则主要在神经系统中表达。

ET 具有广泛的生物学作用.

Product Picture



Tissue/cell: human gastric mucosa; 4% Paraformaldehyde-fixed and paraffin-embedded;

Antigen retrieval: citrate buffer (Human,Mouse,Rat1M, pH 6.0), Boiling bathing for 15min; Block endogenous peroxidase by 3% Hydrogen peroxide for 30min;

Blocking buffer (normal goat serum,C-0005) at 37°C for 20 min;

Incubation: Anti-ET-1 Polyclonal Antibody, Unconjugated(SL0202R) 1:300, overnight at 4°C, followed by conjugation to the secondary antibody(SP-0023)



SunLong Biotech Co.,LTD
Tel: 0086-571-56623320 Fax:0086-571-56623318
E-mail:sales@sunlongbiotech.com
www.sunlongbiotech.com

and DAB(C-0010) staining