

## Rabbit Anti-GDNFRA antibody

SL0201R

**Product Name** GDNFRA

**Chinese Name** GDNF 家族受体  $\alpha$ -1 抗体

**Alias** GDNF Receptor alpha 1; GFRA-1; GFR alpha; GDNFR alpha; TmR1; GFR alpha-1; RETL1; RET ligand 1; TGF-beta related neurotrophic factor receptor-1; AU042498; DKFZp313E1012; DKFZp686J0156; FLJ10561; FLJ31546; GDNFR; Gdnfr alpha; GFR-ALPHA-1; GFRA1; GRFA1; LOC143381; MGC23045; Ret; RET1L; RETL1; TRNR1; GFRA1\_HUMAN; GDNF family receptor alpha-1; GDNF receptor alpha-1; GDNFR-alpha-1; TGF-beta-related neurotrophic factor receptor 1. TGF- $\beta$  related neurotrophic factor receptor-1;

**Research Area** immunology Neurobiology

**Immunogen Species** Rabbit

**Clonality** Polyclonal

**React Species** Human, Mouse, Rat, (predicted: Dog, Pig, Cow, Horse, )  
WB=1:500-2000,IHC-P=1:100-500,IHC-F=1:100-500,IF=1:100-500 (Paraffin sections need antigen repair)

**Applications** not yet tested in other applications.  
optimal dilutions/concentrations should be determined by the end user.

**Theoretical molecular weight** 44kDa

**Cellular localization** The cell membrane

**Form** Liquid

**Concentration** 1mg/ml

**immunogen** KLH conjugated synthetic peptide derived from human GFR Alpha-1: 351-429/465

**Lsotype** IgG

**Purification** affinity purified by Protein A

**Buffer Solution** 1M TBS(pH7.4) with 1% BSA, 3% Proclin300 and 50% Glycerol.

**Storage** Shipped at 4°C. Store at -20 °C for one year. Avoid repeated freeze/thaw cycles.

**Attention**

This product as supplied is intended for research use only, not for use in human, therapeutic or diagnostic applications.

**PubMed**

[PubMed](#)

Glial cell line-derived neurotrophic factor (GDNF) and neurturin (NTN) are two structurally related, potent neurotrophic factors that play key roles in the control of neuron survival and differentiation. The protein encoded by this gene is a member of the GDNF receptor family. It is a glycosylphosphatidylinositol(GPI)-linked cell surface receptor for both GDNF and NTN, and mediates activation of the RET tyrosine kinase receptor. This gene is a candidate gene for Hirschsprung disease. Multiple alternatively spliced transcript variants have been described for this gene. [provided by RefSeq]

**Function:**

Receptor for GDNF. Mediates the GDNF-induced autophosphorylation and activation of the RET receptor.

**Subunit:**

2 molecules of GDNFR-alpha are thought to form a complex with the disulfide-linked GDNF dimer and with 2 molecules of RET.

**Subcellular Location:**

Cell membrane; Lipid-anchor, GPI-anchor.

**Product  
Detail**

**Similarity:**

Belongs to the GDNFR family.

**SWISS:**

P56159

**Gene ID:**

2674

**Database links:**

[Entrez Gene: 2674](#) Human

[Entrez Gene: 14585](#) Mouse

[Entrez Gene: 25454](#) Rat

[Omim: 601496](#) Human

[SwissProt: P56159](#) Human

[SwissProt: P97785](#) Mouse

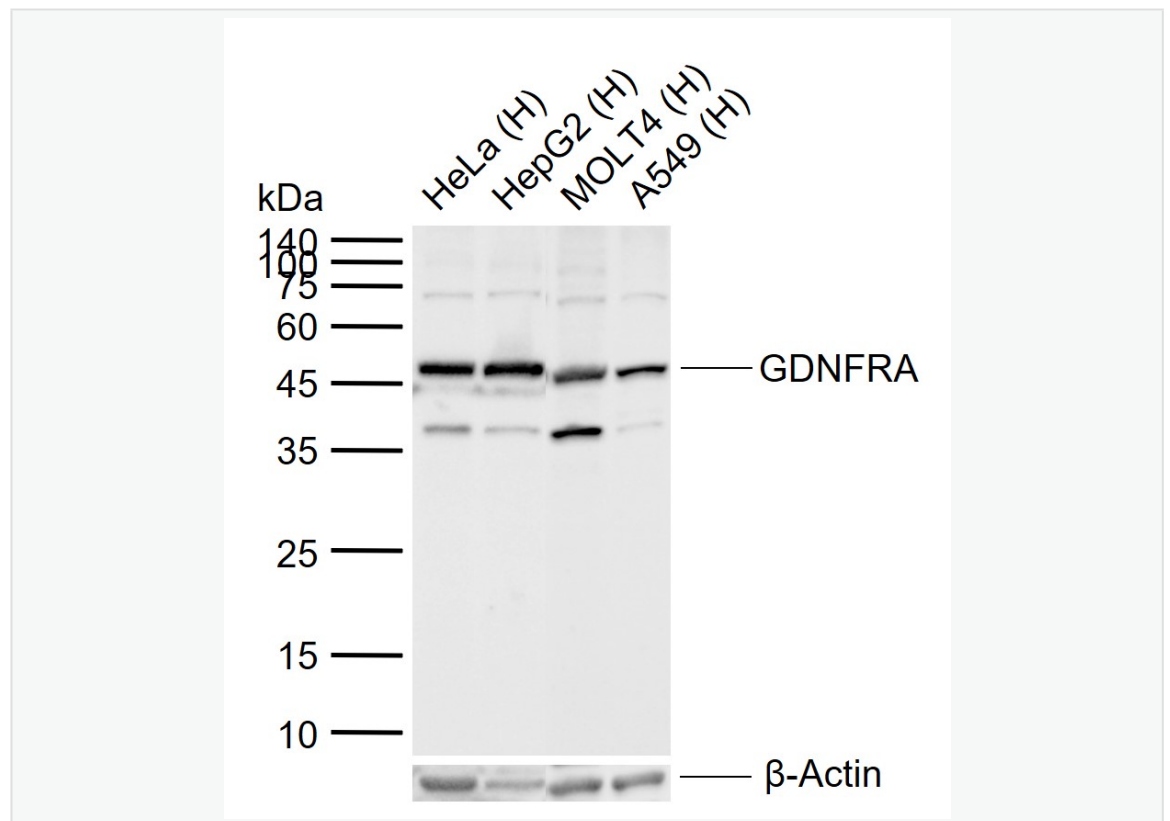
[SwissProt: Q62997](#) Rat

[Unigene: 591913](#) Human

[Unigene: 88489](#) Rat

GFR $\alpha$ -1 是由 68 个氨基酸组成的蛋白，广泛表达于中枢神经系统和外周器官。活性亚单位由两个 GFR $\alpha$ -1 分子中间由二硫键连接而成的复合物。属于 GDNFR 家族成员。

Product  
Picture



Sample:

Lane 1: Human HeLa cell lysates

Lane 2: Human HepG2 cell lysates

Lane 3: Human MOLT4 cell lysates

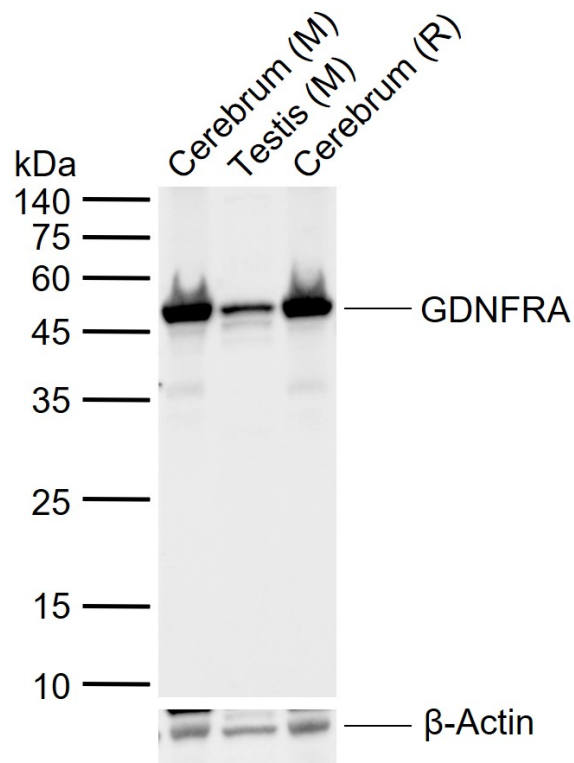
Lane 4: Human A549 cell lysates

Primary: Anti-GDNFRA (SL0201R) at 1/1000 dilution

Secondary: IRDye800CW Goat Anti-Rabbit IgG at 1/20000 dilution

Predicted band size: 44 kDa

Observed band size: 47 kDa



Sample:

Lane 1: Mouse Cerebrum tissue lysates

Lane 2: Mouse Testis tissue lysates

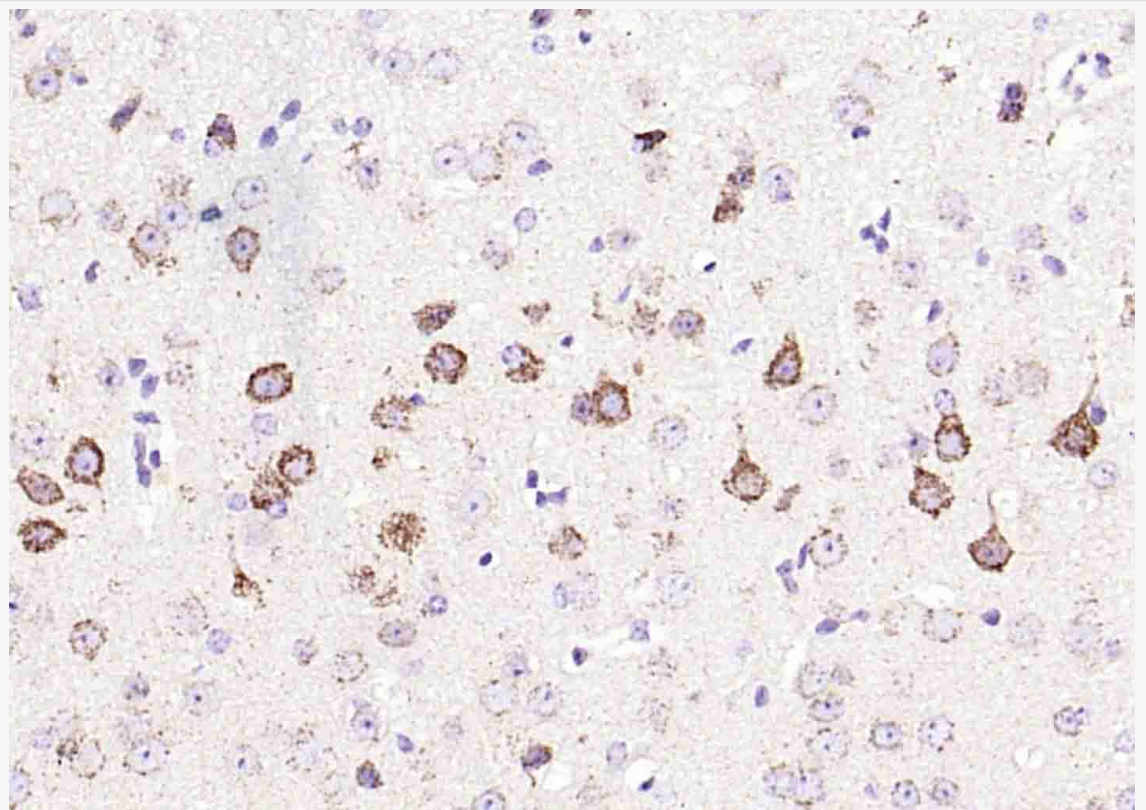
Lane 3: Rat Cerebrum tissue lysates

Primary: Anti-GDNFRA (SL0201R) at 1/1000 dilution

Secondary: IRDye800CW Goat Anti-Rabbit IgG at 1/20000 dilution

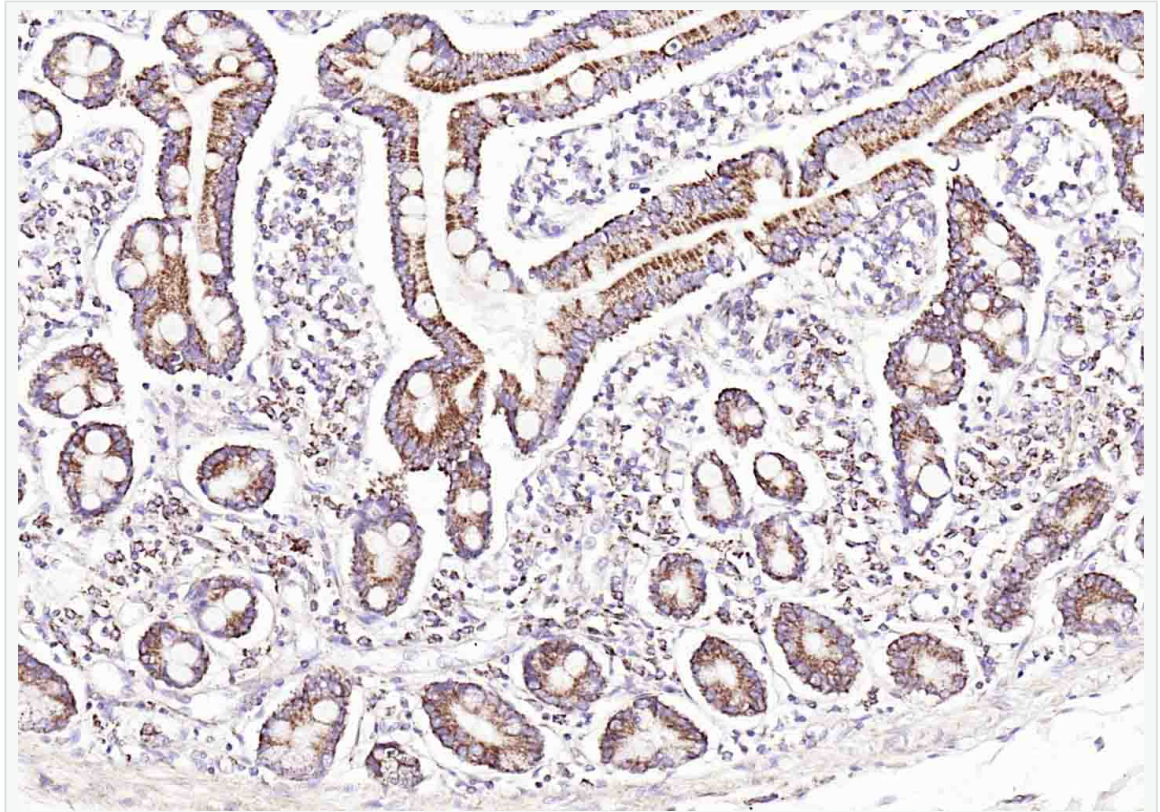
Predicted band size: 44 kDa

Observed band size: 47 kDa

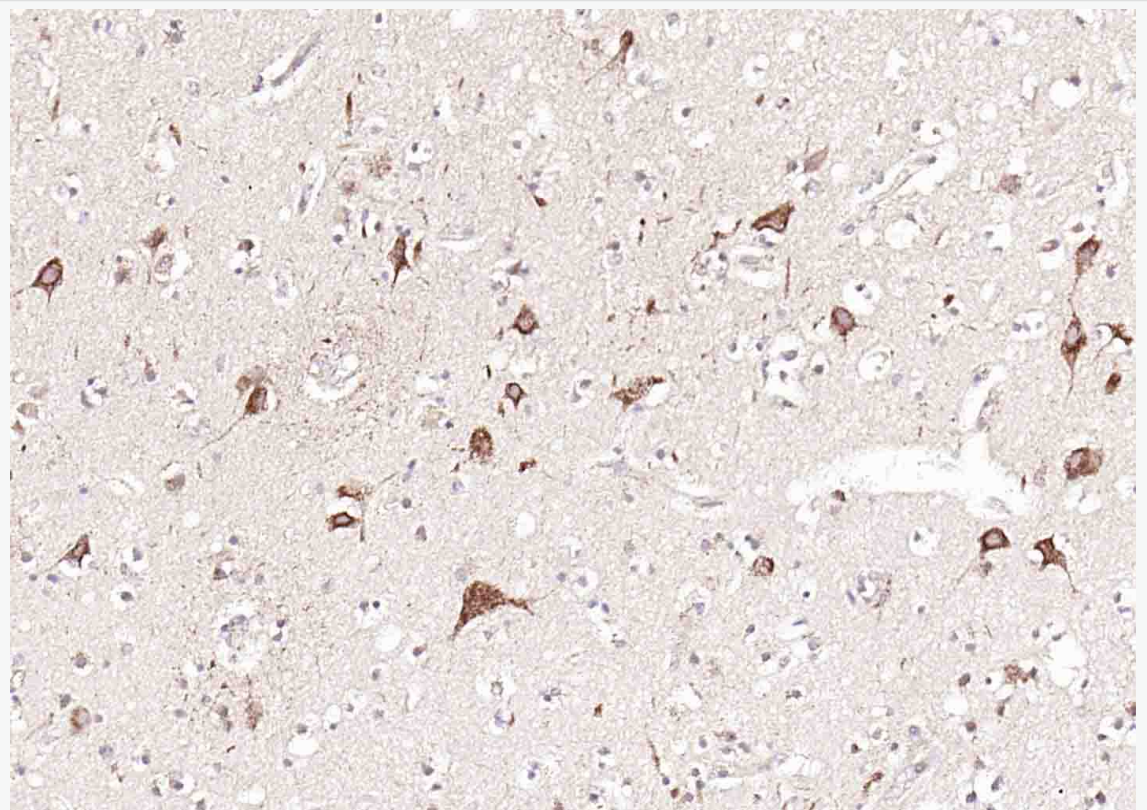


Paraformaldehyde-fixed, paraffin embedded (mouse brain); Antigen retrieval by boiling in sodium citrate buffer (pH6.0) for 15min; Block endogenous peroxidase by 3% hydrogen peroxide for 20 minutes; Blocking buffer (normal goat serum) at 37°C for 30min; Antibody incubation with (GDNFRA) Polyclonal Antibody, Unconjugated (SL0201R) at 1:200 overnight at 4°C, followed by operating according to SP

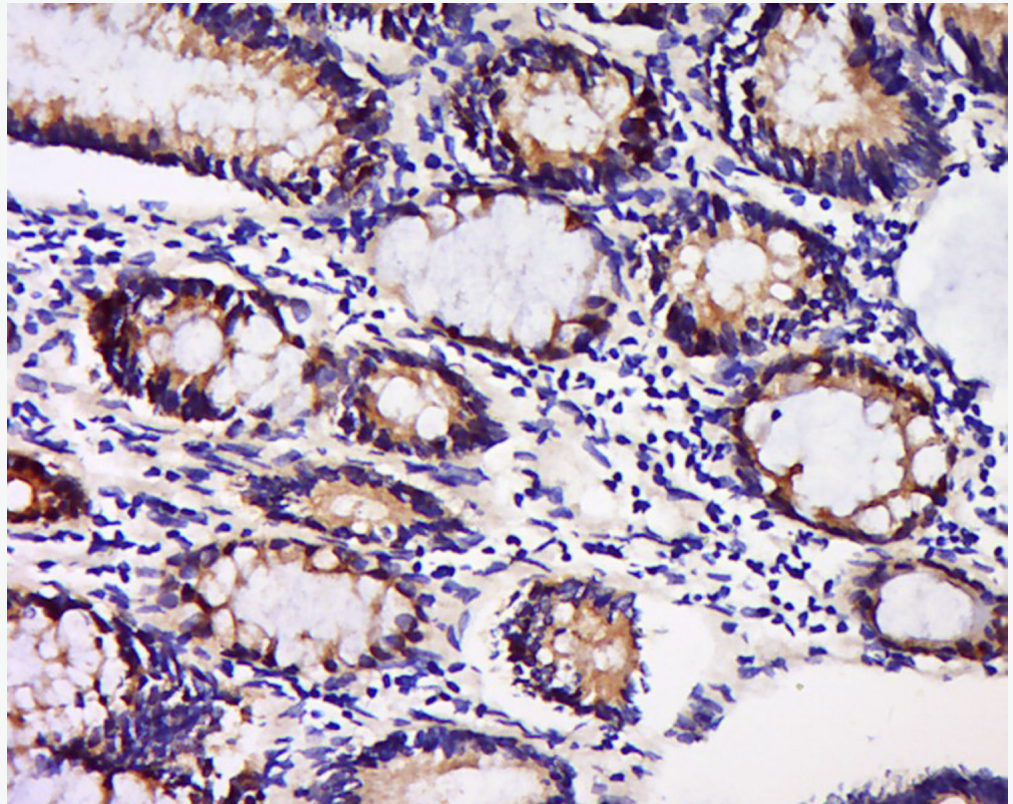
Kit(Rabbit) (sp-0023) instructionsand DAB staining.



Paraformaldehyde-fixed, paraffin embedded (Human duodenum); Antigen retrieval by boiling in sodium citrate buffer (pH6.0) for 15min; Block endogenous peroxidase by 3% hydrogen peroxide for 20 minutes; Blocking buffer (normal goat serum) at 37°C for 30min; Antibody incubation with (GDNFRA) Polyclonal Antibody, Unconjugated (SL0201R) at 1:200 overnight at 4°C, followed by operating according to SP Kit(Rabbit) (sp-0023) instructionsand DAB staining.



Paraformaldehyde-fixed, paraffin embedded (human brain); Antigen retrieval by boiling in sodium citrate buffer (pH6.0) for 15min; Block endogenous peroxidase by 3% hydrogen peroxide for 20 minutes; Blocking buffer (normal goat serum) at 37°C for 30min; Antibody incubation with (GDNFR $\alpha$ ) Polyclonal Antibody, Unconjugated (SL0201R) at 1:200 overnight at 4°C, followed by operating according to SP Kit(Rabbit) (sp-0023) instructions and DAB staining.



Tissue/cell: Human colon cancer ; 4% Paraformaldehyde-fixed and paraffin-embedded;  
Antigen retrieval: citrate buffer ( 1M, pH 6.0 ), Boiling bathing for 15min; Block  
endogenous peroxidase by 3% Hydrogen peroxide for 30min; Blocking buffer (normal  
goat serum,C-0005) at 37°C for 20 min;

Incubation: Anti-GDNFRA Polyclonal Antibody, Unconjugated(SL0201R) 1:200,  
overnight at 4°C, followed by conjugation to the secondary antibody(SP-0023) and  
DAB(C-0010) staining