

Rabbit Anti-PACAP-27/38 antibody

SL0190R

Product Name	PACAP-27/38
Chinese Name	腺苷酸环化酶激活肽-27/38 抗体
Alias	Adenylate Cyclase Activating Polypeptide 1 (Pituitary); Prepro-PACAP; PACAP; Pituitary Adenylate Cyclase Activating Polypeptide; PRP-48; PACAP27; PACAP38; ADCYAP1; PACA_HUMAN; Pituitary Adenylate Cyclase-Activating Polypeptide; Adenylate Cyclase Activating Polypeptide 1; PRP48; PACAP-27; PACAP-38;
Research Area	Cell biology Neurobiology Apoptosis
Immunogen Species	Rabbit
Clonality	Polyclonal
React Species	Human, Rat, (predicted: Mouse,) WB=1:500-2000,IHC-P=1:100-500,IHC-F=1:100-500,IF=1:100-500 (Paraffin sections need antigen repair)
Applications	not yet tested in other applications. optimal dilutions/concentrations should be determined by the end user.
Theoretical molecular weight	19kDa
Cellular localization	Extracellular matrix Secretory protein
Form	Liquid
Concentration	1mg/ml
immunogen	KLH conjugated synthetic peptide derived from human PACAP-27/38: 132-169/176
Lsotype	IgG
Purification	affinity purified by Protein A
Buffer Solution	1M TBS(pH7.4) with 1% BSA, 3% Proclin300 and 50% Glycerol.
Storage	Shipped at 4°C. Store at -20 °C for one year. Avoid repeated freeze/thaw cycles.
Attention	This product as supplied is intended for research use only, not for use in human, therapeutic or diagnostic applications.

PubMed

[PubMed](#)

This gene encodes a secreted proprotein that is further processed into multiple mature peptides. These peptides stimulate adenylate cyclase and increase cyclic adenosine monophosphate (cAMP) levels, resulting in the transcriptional activation of target genes. The products of this gene are key mediators of neuroendocrine stress responses. Alternative splicing results in multiple transcript variants. [provided by RefSeq, Feb 2013]

Function:

Binding to its receptor activates G proteins and stimulates adenylate cyclase in pituitary cells. Promotes neuron projection development through the RAPGEF2/Rap1/B-Raf/ERK pathway. In chromaffin cells, induces long-lasting increase of intracellular calcium concentrations and neuroendocrine secretion. Involved in the control of glucose homeostasis, induces insulin secretion by pancreatic beta cells.

Subunit:

Interacts with ADCYAP1R1 (via N-terminal extracellular domain).

Subcellular Location:

Extracellular region or secreted

Product Detail

Similarity:

Belongs to the glucagon family.

SWISS:

P18509

Gene ID:

116

Database links:

[Entrez Gene: 116](#) Human

[Entrez Gene: 11516](#) Mouse

[Entrez Gene: 414283](#) Pig

[Entrez Gene: 24166](#) Rat

[Omim: 102980](#) Human

[SwissProt: P18509](#) Human

[SwissProt: O70176](#) Mouse

[SwissProt: P41535](#) Pig

[SwissProt: P13589](#) Rat

[Unigene: 531719](#) Human

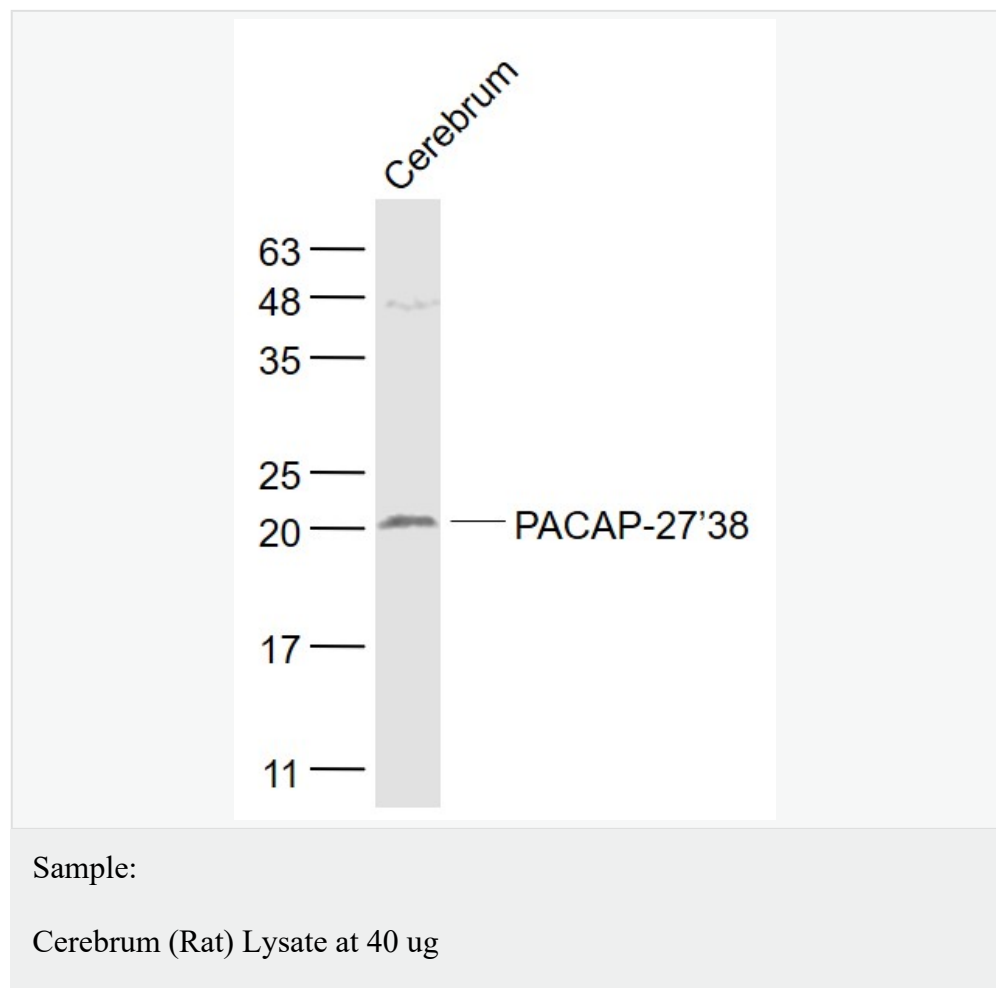
[Unigene: 727476](#) Human

[Unigene: 3407](#) Mouse

[Unigene: 37400](#) Rat

腺苷酸环化酶激活肽是一种可激活垂体腺苷酸环化酶的多肽，有 PACAP-27 和 PACAP-38 两种形式，他们共同具有 N 端 27 个氨基酸，属于 PACAP/glucagon 超级家族。在中枢神经系统分布广泛，其中以下丘脑含量最高。

Product Picture





SunLong Biotech Co.,LTD

Tel: 0086-571-56623320 Fax:0086-571-56623318

E-mail:sales@sunlongbiotech.com

www.sunlongbiotech.com

Primary: Anti- PACAP-27/38 (SL0190R) at 1/1000 dilution

Secondary: IRDye800CW Goat Anti-Rabbit IgG at 1/20000 dilution

Predicted band size: 19 kD

Observed band size: 20 kD