

## Rabbit Anti-Big endothelin-1 antibody

SL0188R

**Product Name** Big endothelin-1

**Chinese Name** 内皮素-1 抗体

**Alias** EDN1\_HUMAN; Big endothelin 1; EDN 1; EDN1; EDN1 protein; Endothelin1; Endothelin 1; Endothelin-1; ET 1; ET1; OTTHUMP00000039245; PPET1; Preproendothelin 1; Preproendothelin1.

**Research Area** Cardiovascular Neurobiology

**Immunogen Species** Rabbit

**Clonality** Polyclonal

**React Species** Human, Mouse, Rat,

**Applications** WB=1:500-2000,IHC-P=1:100-500,IHC-F=1:100-500,IF=1:100-500 (Paraffin sections need antigen repair)  
not yet tested in other applications.  
optimal dilutions/concentrations should be determined by the end user.

**Theoretical molecular weight** 22kDa

**Cellular localization** Secretory protein

**Form** Liquid

**Concentration** 1mg/ml

**immunogen** KLH conjugated synthetic peptide derived from human Big endothelin-1: 16-110/212

**Lsotype** IgG

**Purification** affinity purified by Protein A

**Buffer Solution** 1M TBS(pH7.4) with 1% BSA, 3% Proclin300 and 50% Glycerol.

**Storage** Shipped at 4°C. Store at -20 °C for one year. Avoid repeated freeze/thaw cycles.

**Attention** This product as supplied is intended for research use only, not for use in human, therapeutic or diagnostic applications.

**PubMed** [PubMed](#)

---

Endothelins (ET) show potent constrictor activity in vascular and non-vascular smooth muscle. This family of 21-amino acid peptides exists in at least three isoforms - ET-1, ET-2, and ET-3, and is produced in endothelial and epithelial cells. ET's can mediate biological effects in cells and tissues, and have been shown to bind to an ET receptor in the lung, kidney, heart, and liver. Endothelin 1 is expressed in lung, placental stem villi vessels and in cultured placental vascular smooth muscle cells.

**Function:**

Endothelins are endothelium-derived vasoconstrictor peptides.

**Subcellular Location:**

Secreted.

**Tissue Specificity:**

Expressed in lung, placental stem villi vessels and in cultured placental vascular smooth muscle cells.

**Similarity:**

Belongs to the endothelin/sarafotoxin family.

**SWISS:**

P05305

**Gene ID:**

1906

**Database links:**

[Entrez Gene: 1906](#) Human

[Entrez Gene: 13614](#) Mouse

[Entrez Gene: 24323](#) Rat

[Omim: 131240](#) Human

[SwissProt: P05305](#) Human

[SwissProt: P22387](#) Mouse

[SwissProt: P22388](#) Rat

[Unigene: 511899](#) Human

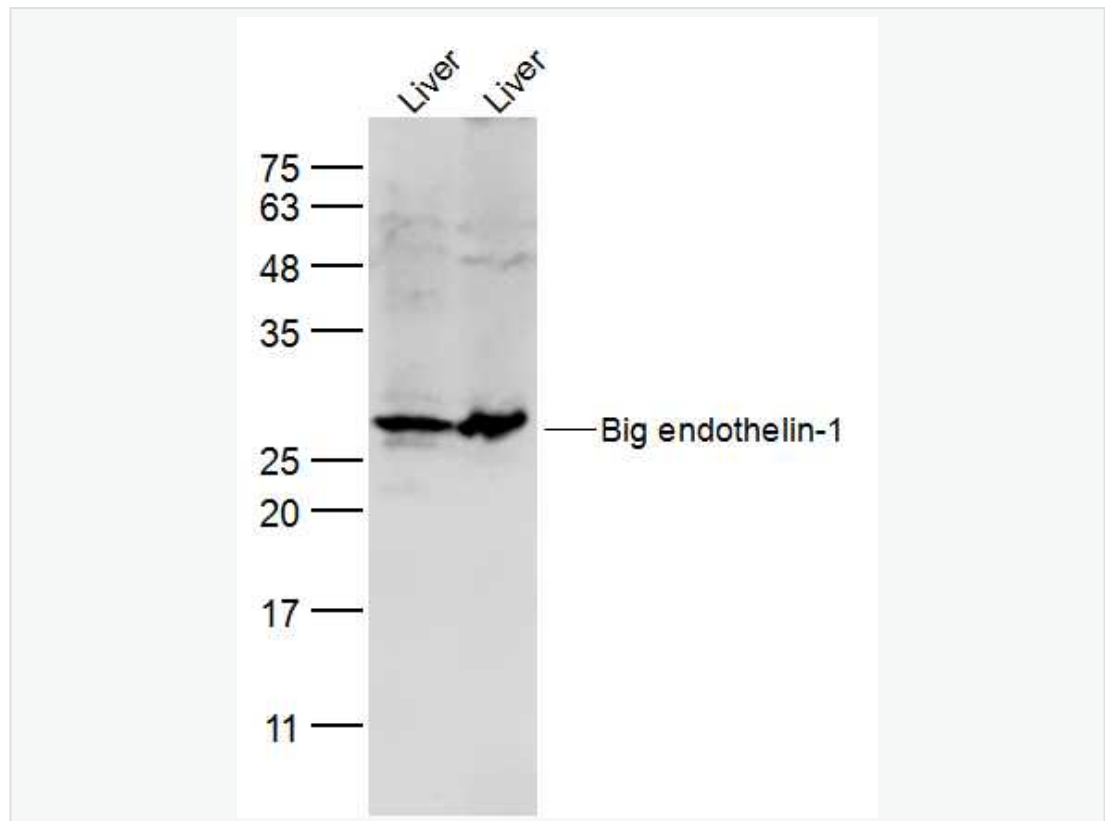
[Unigene: 713645](#) Human

[Unigene: 10918](#) Rat

**Product  
Detail**

内皮素(Endothelin, ET)是一种强的血管收缩剂,分为 ET-1,ET-2,ET-3 三种,ET 主要在 endothelial cells 中表达,而 ET-2 和 ET-3 则主要在神经系统中表达。ET 具有广泛的生物学作用。此抗体是 ET-1 特异性抗体,与 ET-2,ET-3 无 React Species。

**Product  
Picture**



Sample:

Liver (Mouse) Lysate at 40 ug

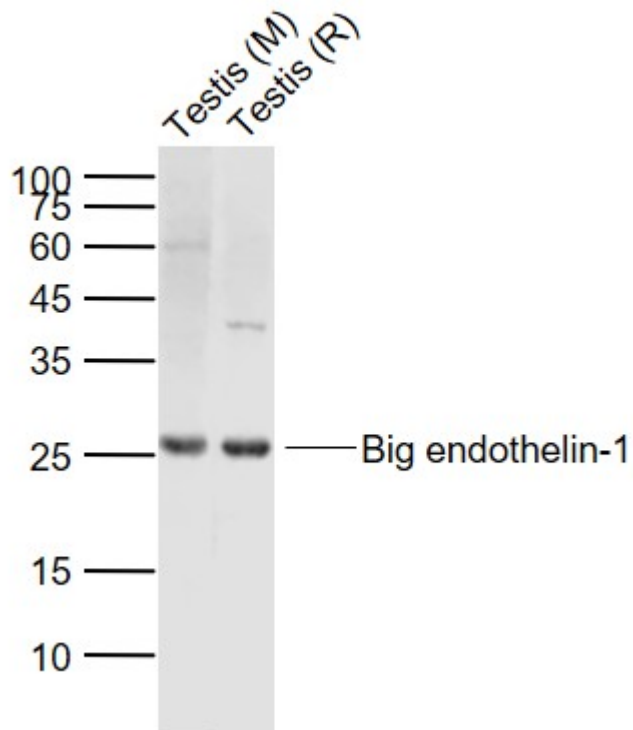
Liver (Rat) Lysate at 40 ug

Primary: Anti-Big endothelin-1 (SL0188R) at 1/300 dilution

Secondary: IRDye800CW Goat Anti-Rabbit IgG at 1/20000 dilution

Predicted band size: 22 kD

Observed band size: 22 kD



Sample:

Lane 1: Testis (Mouse) Lysate at 40 ug

Lane 2: Testis (Rat) Lysate at 40 ug

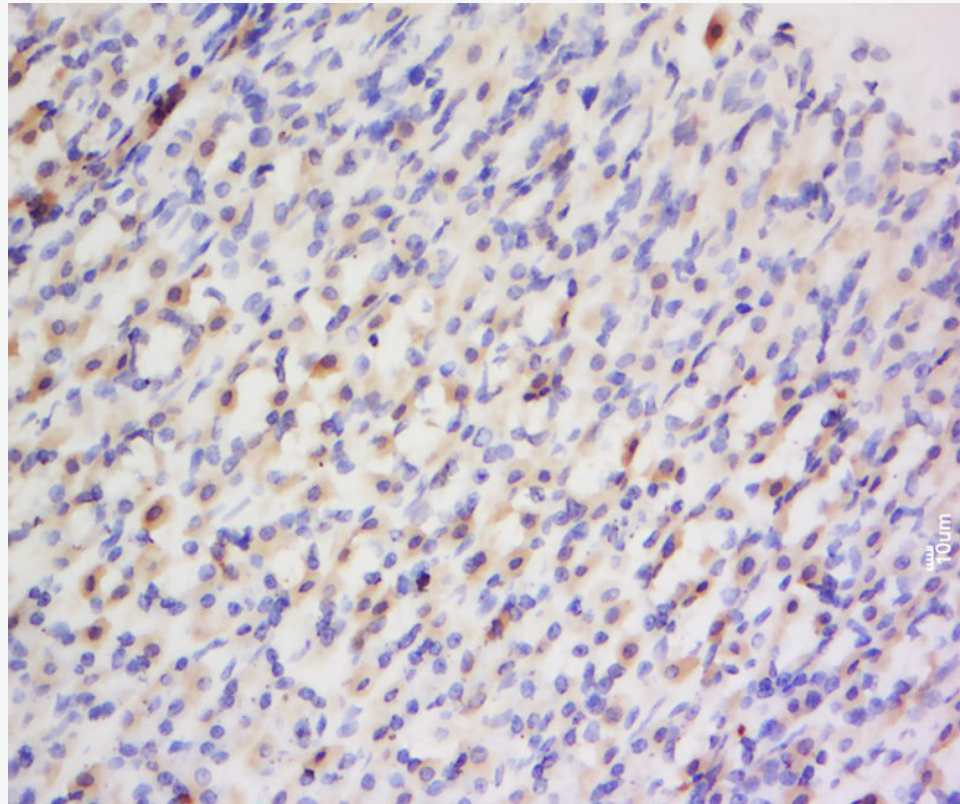
Primary:

Anti-Big endothelin-1 (SL0188R) at 1/1000 dilution

Secondary: IRDye800CW Goat Anti-Rabbit IgG at 1/20000 dilution

Predicted band size: 24 kD

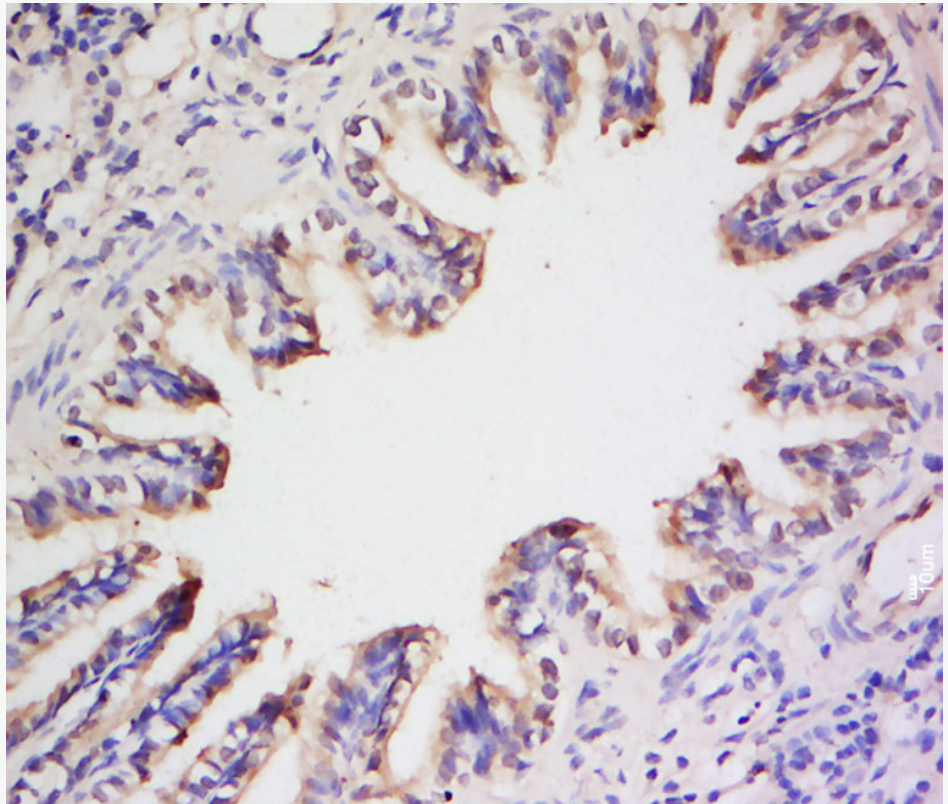
Observed band size: 26 kD



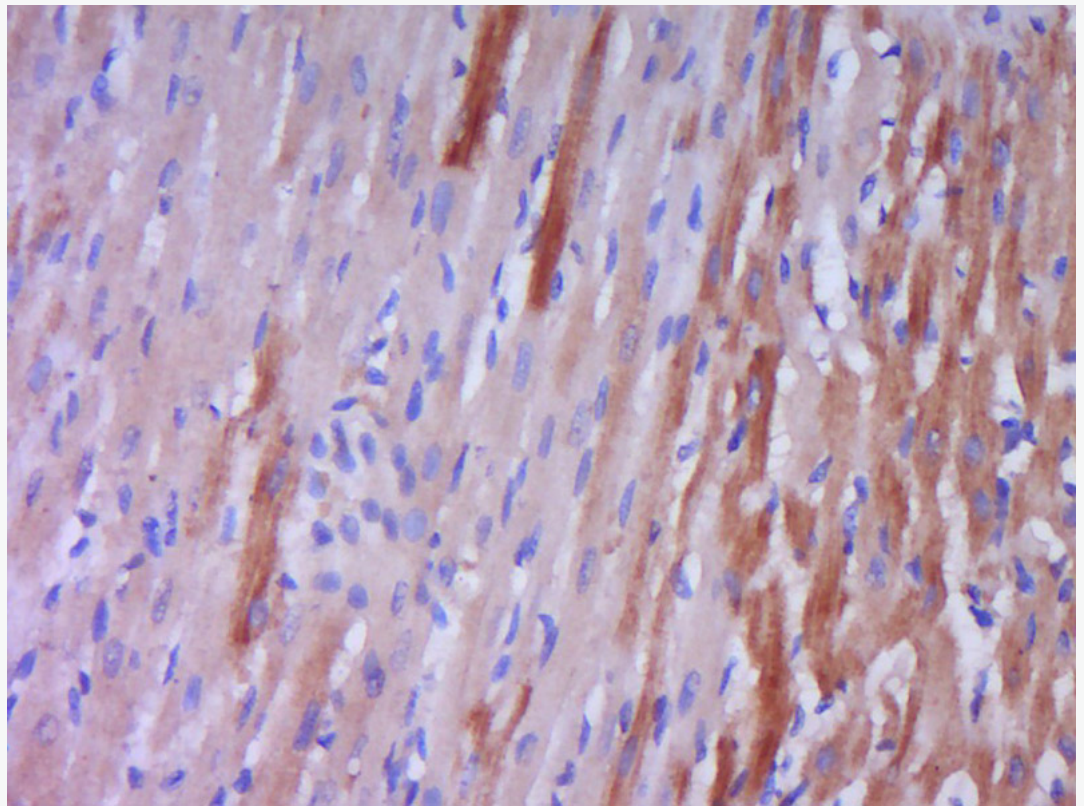
Tissue/cell: Rat stomach tissue; 4% Paraformaldehyde-fixed and paraffin-embedded;

Antigen retrieval: citrate buffer ( 1M, pH 6.0 ), Boiling bathing for 15min; Block endogenous peroxidase by 3% Hydrogen peroxide for 30min; Blocking buffer (normal goat serum,C-0005) at 37°C for 20 min;

Incubation: Anti- Big endothelin-1 Polyclonal Antibody, Unconjugated(SL0118R) 1:200, overnight at 4°C, followed by conjugation to the secondary antibody(SP-0023) and DAB(C-0010) staining



Tissue/cell: Rat lung tissue; 4% Paraformaldehyde-fixed and paraffin-embedded;  
Antigen retrieval: citrate buffer ( 1M, pH 6.0 ), Boiling bathing for 15min; Block endogenous peroxidase by 3% Hydrogen peroxide for 30min; Blocking buffer (normal goat serum,C-0005) at 37°C for 20 min;  
Incubation: Anti- Big endothelin-1 Polyclonal Antibody, Unconjugated(SL0118R) 1:200, overnight at 4°C, followed by conjugation to the secondary antibody(SP-0023) and DAB(C-0010) staining



Paraformaldehyde-fixed, paraffin embedded (Rat heart); Antigen retrieval by boiling in sodium citrate buffer (pH6.0) for 15min; Block endogenous peroxidase by 3% hydrogen peroxide for 20 minutes; Blocking buffer (normal goat serum) at 37°C for 30min; Antibody incubation with (Big endothelin-1) Polyclonal Antibody, Unconjugated (SL0188R) at 1:400 overnight at 4°C, followed by operating according to SP Kit(Rabbit) (sp-0023) instructions and DAB staining.