

Rabbit Anti-Caspase-6 antibody

SL0151R

Product Name Caspase-6

Chinese Name 半胱氨酸蛋白酶蛋白-6 前体蛋白抗体

Alias Apoptosis-related cysteine protein; Apoptosis Related Cysteine Protease; Apoptotic cysteine protease MCH2; Apoptotic protease MCH 2; Apoptotic protease MCH2; Casp 6; Casp6; Caspase 6 apoptosis related cysteine protease; Caspase 6 precursor; Caspase6; Human cysteine protease Mch2 isoform alpha; Mch 2; Mch2; CASP6_HUMAN.

Research Area Cell biology Neurobiology Signal transduction Apoptosis

Immunogen Species Rabbit

Clonality Polyclonal

React Species Human, (predicted: Mouse, Rat,)

Applications IHC-P=1:100-500,IHC-F=1:100-500,IF=1:100-500,Flow-Cyt=2ug/Test (Paraffin sections need antigen repair)
not yet tested in other applications.
optimal dilutions/concentrations should be determined by the end user.

Theoretical molecular weight 33kDa

Cellular localization The nucleus cytoplasmic

Form Liquid

Concentration 1mg/ml

immunogen KLH conjugated synthetic peptide derived from human Caspase-6: 151-250/293

Lsotype IgG

Purification affinity purified by Protein A

Buffer Solution 1M TBS(pH7.4) with 1% BSA, 3% Proclin300 and 50% Glycerol.

Storage Shipped at 4°C. Store at -20 °C for one year. Avoid repeated freeze/thaw cycles.

Attention This product as supplied is intended for research use only, not for use in human,

therapeutic or diagnostic applications.

PubMed

[PubMed](#)

This gene encodes a protein which is a member of the cysteine-aspartic acid protease (caspase) family. Sequential activation of caspases plays a central role in the execution-phase of cell apoptosis. Caspases exist as inactive proenzymes which undergo proteolytic processing at conserved aspartic residues to produce two subunits, large and small, that dimerize to form the active enzyme. This protein is processed by caspases 7, 8 and 10, and is thought to function as a downstream enzyme in the caspase activation cascade. Alternative splicing of this gene results in two transcript variants that encode different isoforms. [provided by RefSeq, Jul 2008]

Function:

Involved in the activation cascade of caspases responsible for apoptosis execution. Cleaves poly(ADP-ribose) polymerase in vitro, as well as lamins. Overexpression promotes programmed cell death.

Subunit:

Heterotetramer that consists of two anti-parallel arranged heterodimers, each one formed by a 18 kDa (p18) and a 11 kDa (p11) subunit. Interacts with BIRC6/bruce.

**Product
Detail**

Subcellular Location:

Cytoplasm.

Post-translational modifications:

Cleavages by caspase-3, caspase-8 or -10 generate the two active subunits.

Similarity:

Belongs to the peptidase C14A family.

SWISS:

P55212

Gene ID:

839

Database links:

[Entrez Gene: 839](#) Human

[Entrez Gene: 12368](#) Mouse

[Entrez Gene: 83584](#) Rat

[Omim: 601532](#) Human

[SwissProt: P55212](#) Human

[SwissProt: O08738](#) Mouse

[SwissProt: O35397](#) Rat

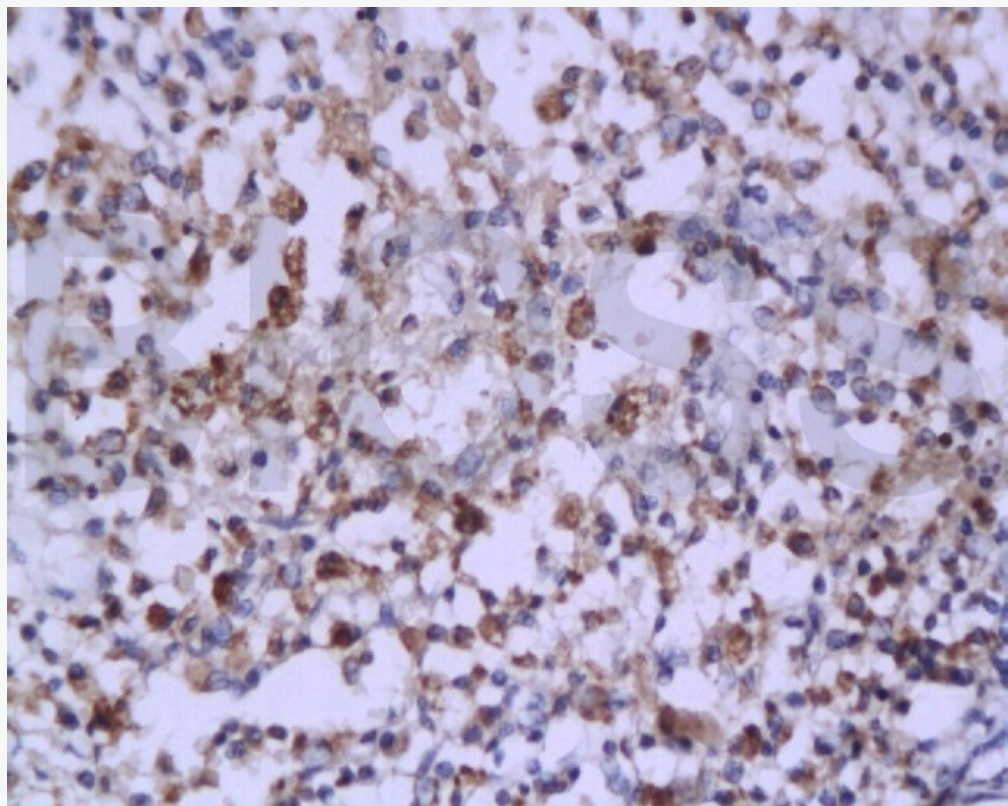
[Unigene: 654616](#) Human

[Unigene: 281379](#) Mouse

[Unigene: 88160](#) Rat

Caspase-6 与 Caspase-3 有 38%的同源性，属胱氨酸-天冬氨酸蛋白酶家族。在凋亡执行阶段起中心作用，可被 Caspase-7、-8、-10 剪切。它是唯一一个可以剪切核纤层蛋白的 Caspase。

Product Picture

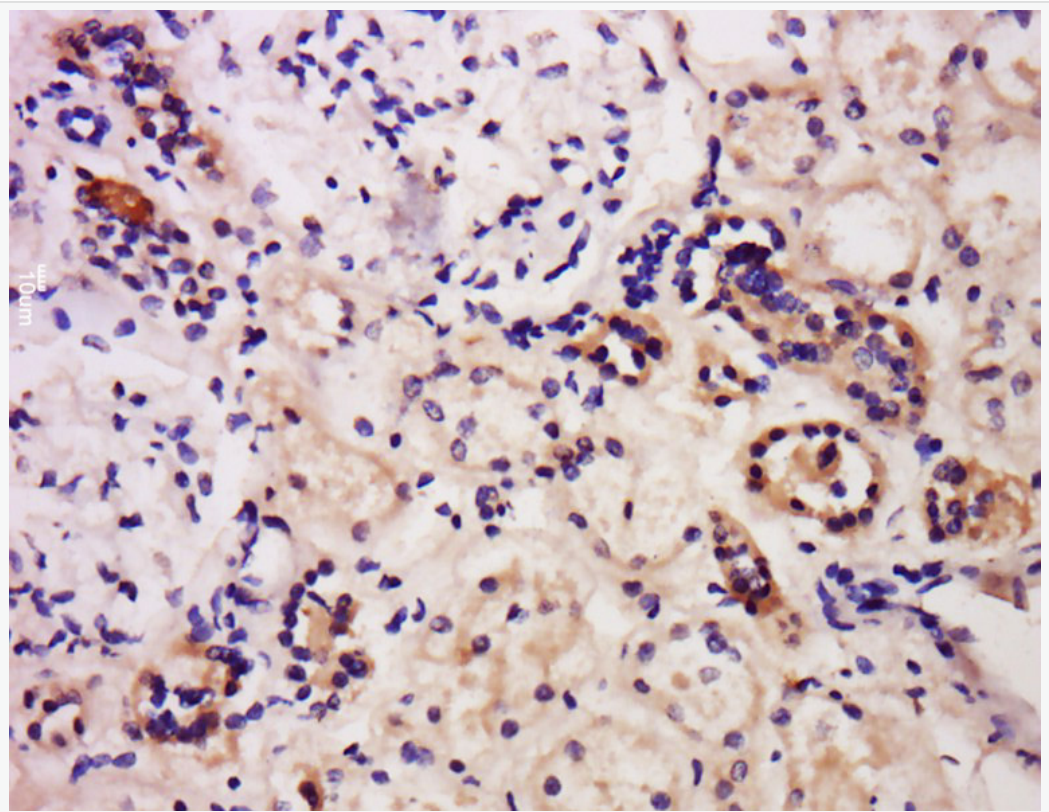


Tissue/cell: human endometrium carcinoma; 4% Paraformaldehyde-fixed and paraffin-embedded;

Antigen retrieval: citrate buffer (1M, pH 6.0), Boiling bathing for 15min;

Block endogenous peroxidase by 3% Hydrogen peroxide for 30min; Blocking buffer (normal goat serum,C-0005) at 37°C for 20 min;

Incubation: Anti-Caspase-6 Polyclonal Antibody, Unconjugated(bs0151R) 1:200, overnight at 4°C, followed by conjugation to the secondary antibody(SP-0023) and DAB(C-0010) staining



Tissue/cell: human kidney tissue; 4% Paraformaldehyde-fixed and paraffin-embedded;

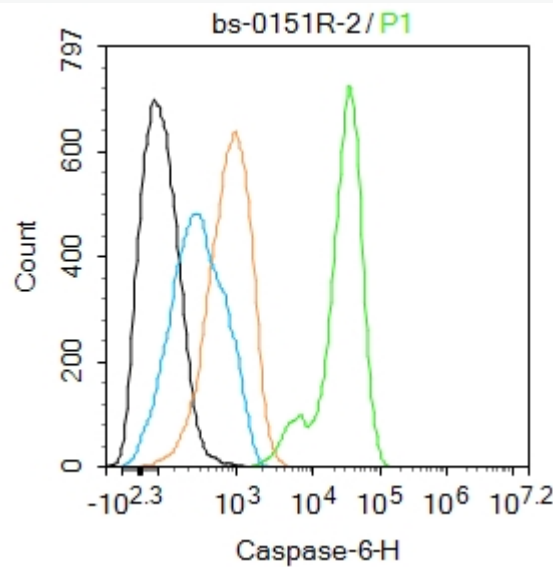
Antigen retrieval: citrate buffer (1M, pH 6.0), Boiling bathing for 15min;

Block endogenous peroxidase by 3% Hydrogen peroxide for 30min; Blocking

buffer (normal goat serum,C-0005) at 37°C for 20 min;

Incubation: Anti-Caspase-6 Polyclonal Antibody, Unconjugated(SL0151R)

1:200, overnight at 4°C, followed by conjugation to the secondary antibody(SP-0023) and DAB(C-0010) staining



Blank control:K562.

Primary Antibody (green line): Rabbit Anti-Caspase-6 antibody (SL0151R)

Dilution: 2ug/Test;

Secondary Antibody : Goat anti-rabbit IgG-FITC

Dilution: 0.5ug/Test.

Protocol

The cells were fixed with 4% PFA (10min at room temperature)and then permeabilized with 90% ice-cold methanol for 20 min at -20°C.The cells were then incubated in 5%BSA to block non-specific protein-protein interactions for



SunLong Biotech Co.,LTD

Tel: 0086-571-56623320 Fax:0086-571-56623318

E-mail:sales@sunlongbiotech.com

www.sunlongbiotech.com

30 min at room temperature .Cells stained with Primary Antibody for 30 min at room temperature. The secondary antibody used for 40 min at room temperature. Acquisition of 20,000 events was performed.