

## Rabbit Anti-Calcitonin receptor antibody

SL0124R

<b>Product Name</b>	Calcitonin receptor
<b>Chinese Name</b>	降钙素受体抗体
<b>Alias</b>	Calcitonin receptor precursor; Calcr; CRT; CT R; CTR; CTR1; CALCR_MOUSE; CT-R; CALCR_HUMAN.
<b>Research Area</b>	Tumour immunology Neurobiology Signal transduction The cell membrane 受体 G protein-coupled receptor
<b>Immunogen Species</b>	Rabbit
<b>Clonality</b>	Polyclonal
<b>React Species</b>	Rat, (predicted: Mouse, ) IHC-P=1:100-500,IHC-F=1:100-500,IF=1:100-500 (Paraffin sections need antigen repair)
<b>Applications</b>	not yet tested in other applications. optimal dilutions/concentrations should be determined by the end user.
<b>Theoretical molecular weight</b>	53kDa
<b>Cellular localization</b>	The cell membrane
<b>Form</b>	Liquid
<b>Concentration</b>	1mg/ml
<b>immunogen</b>	KLH conjugated synthetic peptide derived from mouse Calcitonin receptor: 31-120/516 <Extracellular>
<b>Lsotype</b>	IgG
<b>Purification</b>	affinity purified by Protein A
<b>Buffer Solution</b>	1M TBS(pH7.4) with 1% BSA, 3% Proclin300 and 50% Glycerol.
<b>Storage</b>	Shipped at 4°C. Store at -20 °C for one year. Avoid repeated freeze/thaw cycles.
<b>Attention</b>	This product as supplied is intended for research use only, not for use in human, therapeutic or diagnostic applications.
<b>PubMed</b>	<a href="#">PubMed</a>

This gene encodes a high affinity receptor for the peptide hormone calcitonin and belongs to a subfamily of seven transmembrane-spanning G protein-coupled receptors. The encoded protein is involved in maintaining calcium homeostasis and in regulating osteoclast-mediated bone resorption. Polymorphisms in this gene have been associated with variations in bone mineral density and onset of osteoporosis. Alternate splicing results in multiple transcript variants. [provided by RefSeq, Sep 2009]

**Function:**

This is a receptor for calcitonin. The activity of this receptor is mediated by G proteins which activate adenylyl cyclase. The calcitonin receptor is thought to couple to the heterotrimeric guanosine triphosphate-binding protein that is sensitive to cholera toxin.

**Subunit:**

Interacts with GPRASP2.

**Subcellular Location:**

Cell membrane; Multi-pass membrane protein.

**Similarity:**

Belongs to the G-protein coupled receptor 2 family.

**Product  
Detail**

**SWISS:**  
P32214

**Gene ID:**  
12311

**Database links:**

[Entrez Gene: 799](#) Human

[Entrez Gene: 12311](#) Mouse

[Entrez Gene: 116506](#) Rat

[Omim: 114131](#) Human

[SwissProt: P30988](#) Human

[SwissProt: Q60755](#) Mouse

[SwissProt: P32214](#) Rat

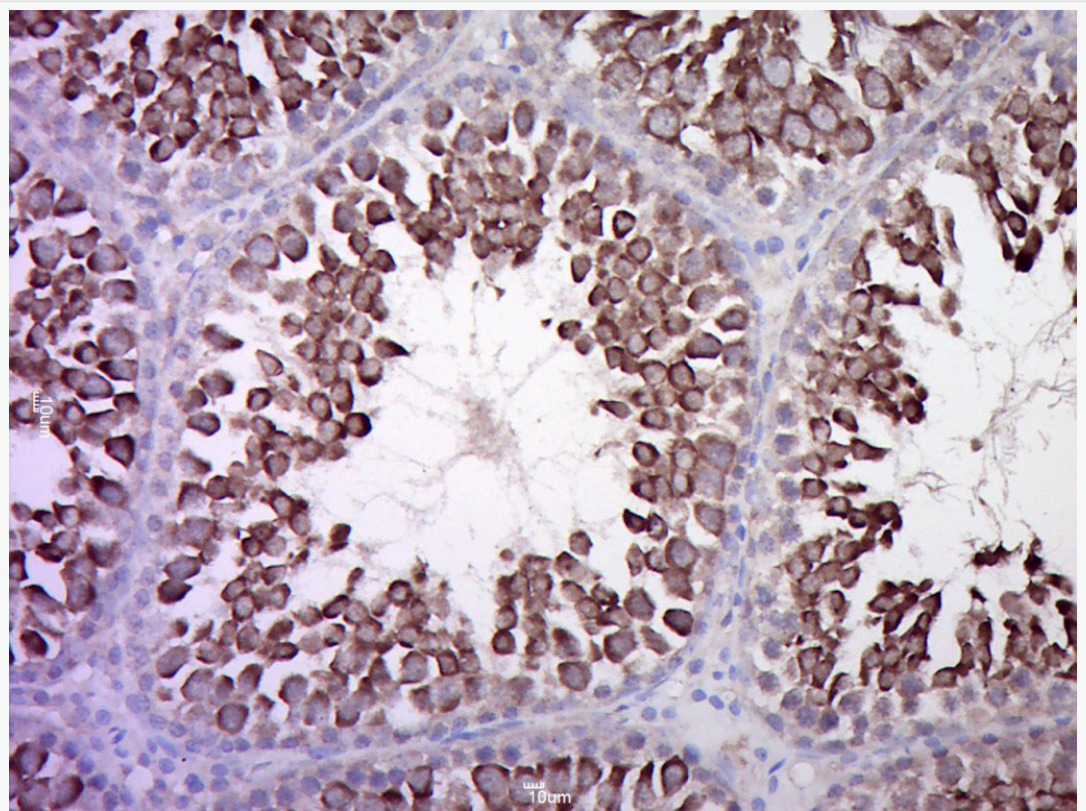
[Unigene: 489127](#) Human

[Unigene: 4642](#) Mouse

[Unigene: 10062](#) Rat

降钙素受体 (Calcitonin receptor,CT-R)是 G protein-coupled receptor, 有两种受体亚型, CT-R 可与多种配体结合, 如 CGRP、Amylin、Am 等。CT-R 在破骨细胞中含量最高, 也存在于肾等多种器官组织内。

**Product  
Picture**



Paraformaldehyde-fixed, paraffin embedded (Rat testis); Antigen retrieval by boiling in sodium citrate buffer (pH6.0) for 15min; Block endogenous peroxidase by 3% hydrogen peroxide for 20 minutes; Blocking buffer (normal goat serum) at 37°C for 30min; Antibody incubation with (CALCR) Polyclonal Antibody, Unconjugated (SL0124R) at 1:500 overnight at 4°C, followed by a conjugated secondary (sp-0023) for 20 minutes and DAB staining.