

Rabbit Anti-SYAP1 antibody

SL0121R

Product Name	SYAP1
Chinese Name	突触相关蛋白-1 抗体
Alias	Synapse associated protein-1; synapse-associated protein 1-like; 2010110O17Rik, AW011796, DKFZp686K221, FLJ14495, FLJ44185, MGC94115, PRO3113, SYAP1; SYAP1_HUMAN; SAP-1.
Research Area	Cell biology immunology Neurobiology Signal transduction
Immunogen Species	Rabbit
Clonality	Polyclonal
React Species	Human, Rat, (predicted: Mouse, Chicken, Dog, Pig, Cow, Horse,) IHC-P=1:100-500,IHC-F=1:100-500,IF=1:100-500,Flow-Cyt=1µg/Test (Paraffin sections need antigen repair)
Applications	not yet tested in other applications. optimal dilutions/concentrations should be determined by the end user.
Theoretical molecular weight	40kDa
Cellular localization	cytoplasmic The cell membrane
Form	Liquid
Concentration	1mg/ml
immunogen	KLH conjugated synthetic peptide derived from human SAP-1 : 151-230/352
Lsotype	IgG
Purification	affinity purified by Protein A
Buffer Solution	1M TBS(pH7.4) with 1% BSA, 3% Proclin300 and 50% Glycerol.
Storage	Shipped at 4°C. Store at -20 °C for one year. Avoid repeated freeze/thaw cycles.
Attention	This product as supplied is intended for research use only, not for use in human, therapeutic or diagnostic applications.
PubMed	PubMed
Product Detail	SYAP1 (synapse-associated protein 1) is a 352 amino acid protein that is

ubiquitously expressed in adult tissues. SYAP1 contains one BSD domain which is a novel domain that is present in basal transcription factors, synapse-associated proteins and several hypothetical proteins. The BSD domain is characterized by three predicted alpha helices and by conserved tryptophan and phenylalanine residues, located at the C-terminus of the domain. The gene that encodes SYAP1 in humans is located on chromosome X. Chromosome X consists of about 153 million base pairs and nearly 1,000 genes. Color blindness, hemophilia, and Duchenne muscular dystrophy are well known X chromosome-linked conditions which affect males more frequently as males carry a single X chromosome.

Similarity:

Contains 1 BSD domain.

SWISS:

Q96A49

Gene ID:

94056

Database links:

[Entrez Gene: 509355](#) Cow

[Entrez Gene: 94056](#) Human

[Entrez Gene: 67043](#) Mouse

[Entrez Gene: 302678](#) Rat

[SwissProt: Q96A49](#) Human

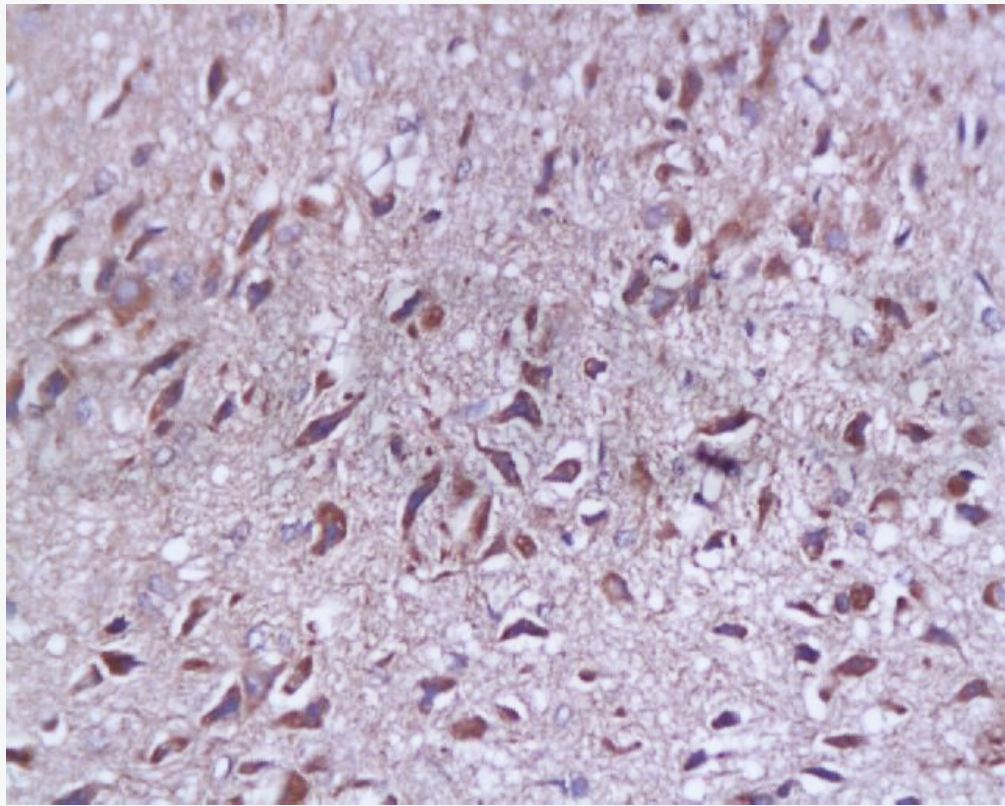
[SwissProt: Q9D5V6](#) Mouse

[Unigene: 729197](#) Human

[Unigene: 44207](#) Mouse

突触素 SAP-1/SYP(Synaptophysin, FRG-4)是分布于突触囊泡膜上含量丰富的 glycoprotein 之一，与递质释放关系密切，并可影响突触可塑性。突触相关蛋白-1 可作为神经元和神经内分泌细胞的可靠标记物用于神经系统形态、功能和发育以及相关疾病的研究。对于 SAP-1 的功能及其具体作用机制，尚待进一步研究。

**Product
Picture**



Tissue/cell: rat brain tissue; 4% Paraformaldehyde-fixed and paraffin-embedded;

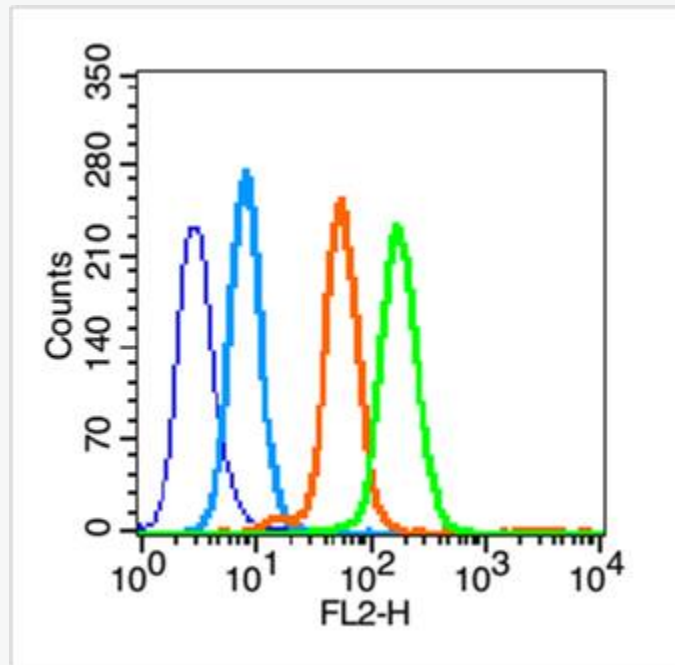
Antigen retrieval: citrate buffer (1M, pH 6.0), Boiling bathing for 15min;

Block endogenous peroxidase by 3% Hydrogen peroxide for 30min;

Blocking buffer (normal goat serum,C-0005) at 37°C for 20 min;

Incubation: Anti-SYP p38/Synaptophysin/SAP-1 Polyclonal Antibody,

Unconjugated(SL0121R) 1:200, overnight at 4°C, followed by conjugation to the secondary antibody(SP-0023) and DAB(C-0010) staining



Blank control (blue line): Hep G2 (blue).

Primary Antibody (green line): Rabbit Anti-SYAP1 antibody (SL0121R)

Dilution: $1\mu\text{g} / 10^6$ cells;

Isotype Control Antibody (orange line): Rabbit IgG .

Secondary Antibody (white blue line): Goat anti-rabbit IgG-PE

Dilution: $1\mu\text{g} / \text{test}$.

Protocol

The cells were fixed with 70% ethanol (Overnight at 4°C) and then permeabilized with 0.1% PBS-Tween for 20 min at room temperature. Cells stained with Primary Antibody for 30 min at room temperature. The cells were then incubated in 1 X PBS/2%BSA/10% goat serum to block non-specific protein-protein interactions followed by the antibody for 15 min



SunLong Biotech Co.,LTD

Tel: 0086-571-56623320 Fax:0086-571-56623318

E-mail:sales@sunlongbiotech.com

www.sunlongbiotech.com

at room temperature. The secondary antibody used for 40 min at room temperature. Acquisition of 20,000 events was performed.