

Rabbit Anti-PKM2 antibody

SL0101R

Product Name PKM2

Chinese Name 丙酮酸激酶-M2 抗体

Alias PK 1; PK 2; PK 3; PK Muscle type; PK1; PK2; Pk3; PKL; PKLR; PKM 2; PKM; PYKM; Pyruvate kinase 1; Pyruvate kinase 2/3; Pyruvate kinase 3; Pyruvate kinase isozyme R/L; Pyruvate kinase isozymes M1/M2; Pyruvate kinase liver and blood cell; Pyruvate kinase liver and RBC; Pyruvate kinase liver and RBC type; Pyruvate kinase M2; Pyruvate kinase muscle; Pyruvate kinase muscle isozyme; Pyruvate kinase type L; R type/L type pyruvate kinase; Red cell/liver pyruvate kinase; RPK; TCB; THBP 1; THBP1; Thyroid hormone binding protein cytosolic; CTHBP; Cytosolic thyroid hormone binding protein; MGC3932; OIP 3; Oip3; Tumor M2-PK; p58; OIP-3; KPYM_HUMAN.

Research Area Tumour immunology Chromatin and nuclear signals Signal transduction Cyclin Kinases and Phosphatases TumourCell biologyMaker The new supersedes the old

Immunogen Species Rabbit

Clonality Polyclonal

React Species Human, Mouse, Rat, (predicted: Pig, Cow, Horse, Rabbit,)

WB=1:500-2000,IHC-P=1:100-500,IHC-F=1:100-500,IF=1:100-500,Flow-Cyt=1ug/Test
(Paraffin sections need antigen repair)

Applications not yet tested in other applications.
optimal dilutions/concentrations should be determined by the end user.

Theoretical molecular weight 57kDa

Cellular localization The nucleus cytoplasmic

Form Liquid

Concentration 1mg/ml

immunogen KLH conjugated synthetic peptide derived from human PKM2: 255-350/531

Lsotype IgG

Purification affinity purified by Protein A

Buffer Solution 1M TBS(pH7.4) with 1% BSA, 3% Proclin300 and 50% Glycerol.



Storage	Shipped at 4°C. Store at -20 °C for one year. Avoid repeated freeze/thaw cycles.
Attention	This product as supplied is intended for research use only, not for use in human, therapeutic or diagnostic applications.
PubMed	PubMed The protein encoded by this gene is a pyruvate kinase that catalyzes the production of phosphoenolpyruvate from pyruvate and ATP. This protein has been shown to interact with thyroid hormone, and thus may mediate cellular metabolic effects induced by thyroid hormones. This protein has been found to bind Opa protein, a bacterial outer membrane protein involved in gonococcal adherence to and invasion of human cells, suggesting a role of this protein in bacterial pathogenesis. Three alternatively spliced transcript variants encoding two distinct isoforms have been reported.
Product Detail	<p>Function: Glycolytic enzyme that catalyzes the transfer of a phosphoryl group from phosphoenolpyruvate (PEP) to ADP, generating ATP. Stimulates POU5F1-mediated transcriptional activation. Plays a general role in caspase independent cell death of tumor cells. The ratio between the highly active tetrameric form and nearly inactive dimeric form determines whether glucose carbons are channeled to biosynthetic processes or used for glycolytic ATP production. The transition between the 2 forms contributes to the control of glycolysis and is important for tumor cell proliferation and survival.</p> <p>Subunit: Monomer and homotetramer. Exists as a monomer in the absence of FBP, and reversibly associates to form a homotetramer in the presence of FBP. The monomeric form binds T3. Tetramer formation induces pyruvate kinase activity. The tetrameric form has high affinity for the substrate and is associated within the glycolytic enzyme complex. Exists in a nearly inactive dimeric form in tumor cells and the dimeric form has less affinity for the substrate. Binding to certain oncoproteins such as HPV-16 E7 oncoprotein can trigger dimerization. FBP stimulates the formation of tetramers from dimers. Interacts with HERC1, POU5F1 and PML. Interacts (isoform M2) with EGLN3; the interaction hydroxylates PKM under hypoxia and enhances binding to HIF1A. Interacts (isoform M2) with HIF1A; the interaction is enhanced by binding of EGLN3, promoting enhanced transcription activity under hypoxia.</p> <p>Subcellular Location: Cytoplasm. Nucleus. Note=Translocates to the nucleus in response to different apoptotic stimuli. Nuclear translocation is sufficient to induce cell death that is caspase independent, isoform-specific and independent of its enzymatic activity.</p> <p>Tissue Specificity: Specifically expressed in proliferating cells, such as embryonic stem cells, embryonic carcinoma cells, as well as cancer cells.</p>

Post-translational modifications:

Phosphorylated upon DNA damage, probably by ATM or ATR.
ISGylated.

Under hypoxia, hydroxylated by EGLN3.

Similarity:

Belongs to the pyruvate kinase family.

SWISS:

P14618

Gene ID:

5315

Database links:

[Entrez Gene: 5315](#) Human

[Entrez Gene: 18746](#) Mouse

[Entrez Gene: 25630](#) Rat

[Omim: 179050](#) Human

[SwissProt: P14618](#) Human

[SwissProt: P52480](#) Mouse

[SwissProt: P11980](#) Rat

[Unigene: 534770](#) Human

[Unigene: 326167](#) Mouse

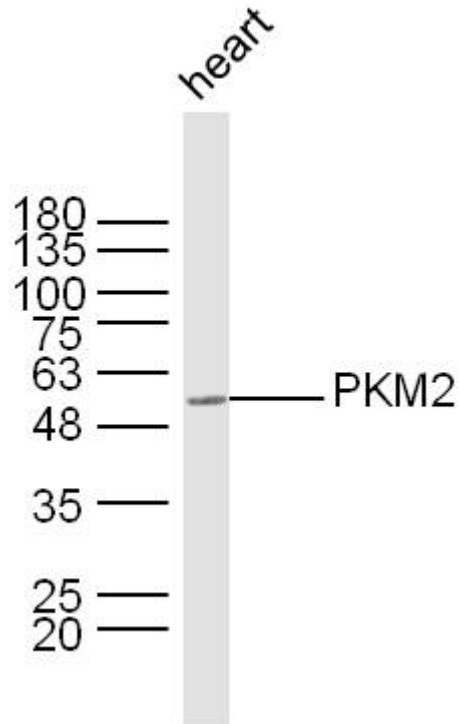
[Unigene: 405069](#) Mouse

[Unigene: 1556](#) Rat

丙酮酸激酶（PK）有 L、R、M1、M2 四种同工酶，均为四聚体。

L 型主要分布于肝脏，R 型存在于红细胞，在结构、immunology 和动力学上十分相似，由同一基因调控；M1 存在于肌肉中，M2 分布于除上述以外的其他组织（尤其肾脏最多）以及胎儿各组织。PK 也是一种癌胚蛋白，在恶性 Tumour 中，增高的者是 M2 型。

**Product
Picture**



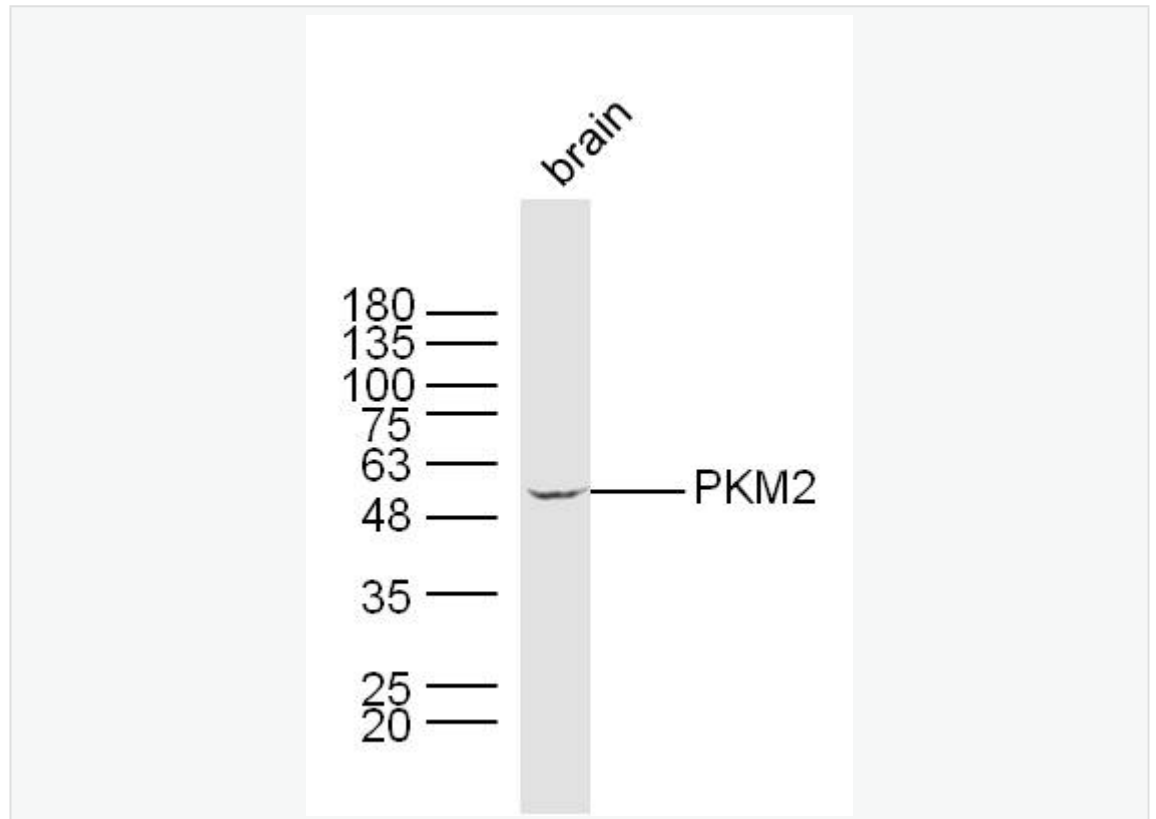
Sample:Heart(Mouse) Lysate at 40 ug

Primary: Anti- PKM2 (SL0101R)at 1/300 dilution

Secondary: IRDye800CW Goat Anti-Rabbit IgG at 1/20000 dilution

Predicted band size: 57kD

Observed band size: 54kD



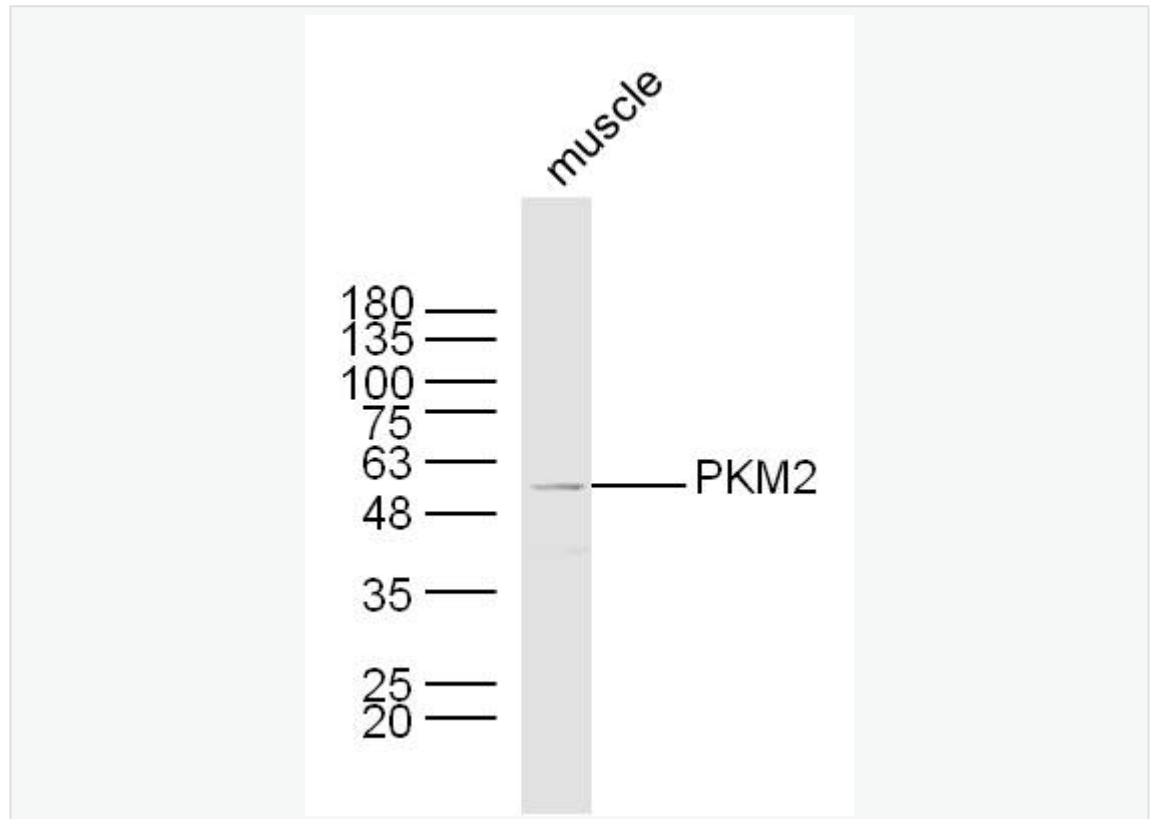
Sample:Brain (Mouse) Lysate at 40 ug

Primary: Anti- PKM2 (SL0101R)at 1/300 dilution

Secondary: IRDye800CW Goat Anti-Rabbit IgG at 1/20000 dilution

Predicted band size: 57kD

Observed band size: 54kD



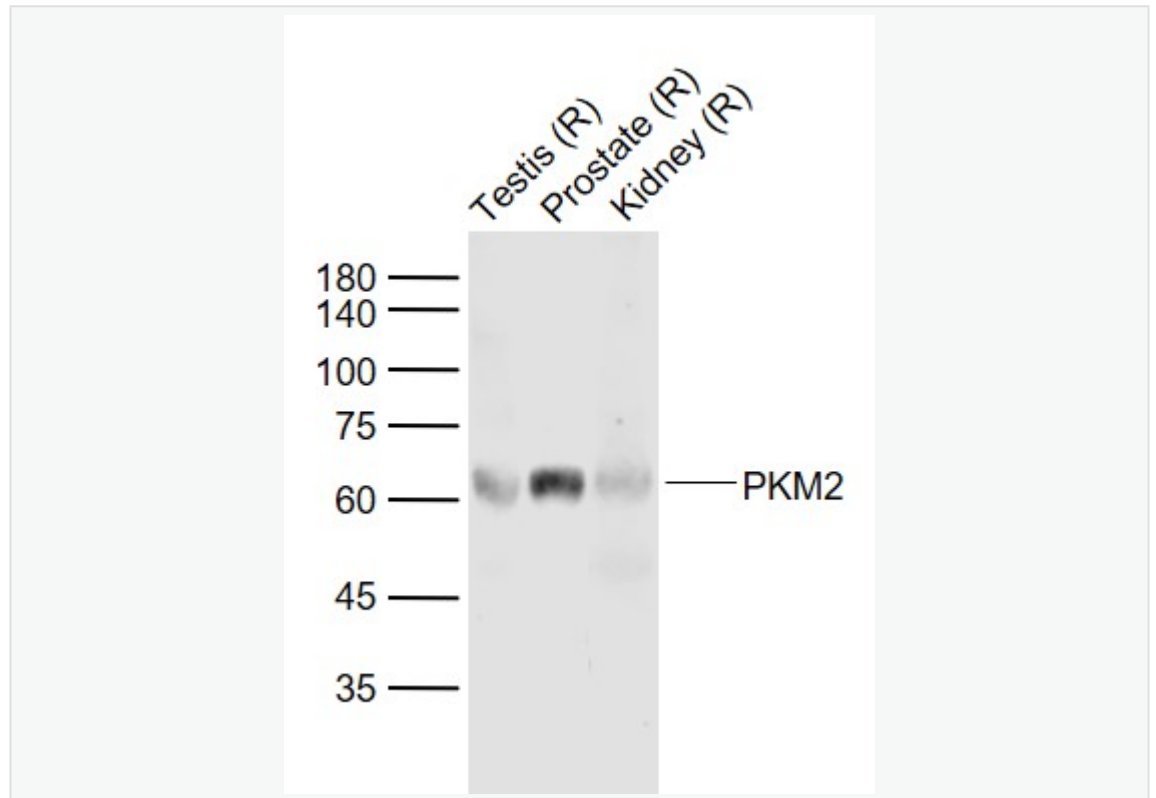
Sample:Muscle (Mouse) Lysate at 40 ug

Primary: Anti- PKM2 (SL0101R)at 1/300 dilution

Secondary: IRDye800CW Goat Anti-Rabbit IgG at 1/20000 dilution

Predicted band size: 57kD

Observed band size: 55kD



Sample:

Lane 1: Testis (Rat) Lysate at 40 ug

Lane 2: Prostate (Rat) Lysate at 40 ug

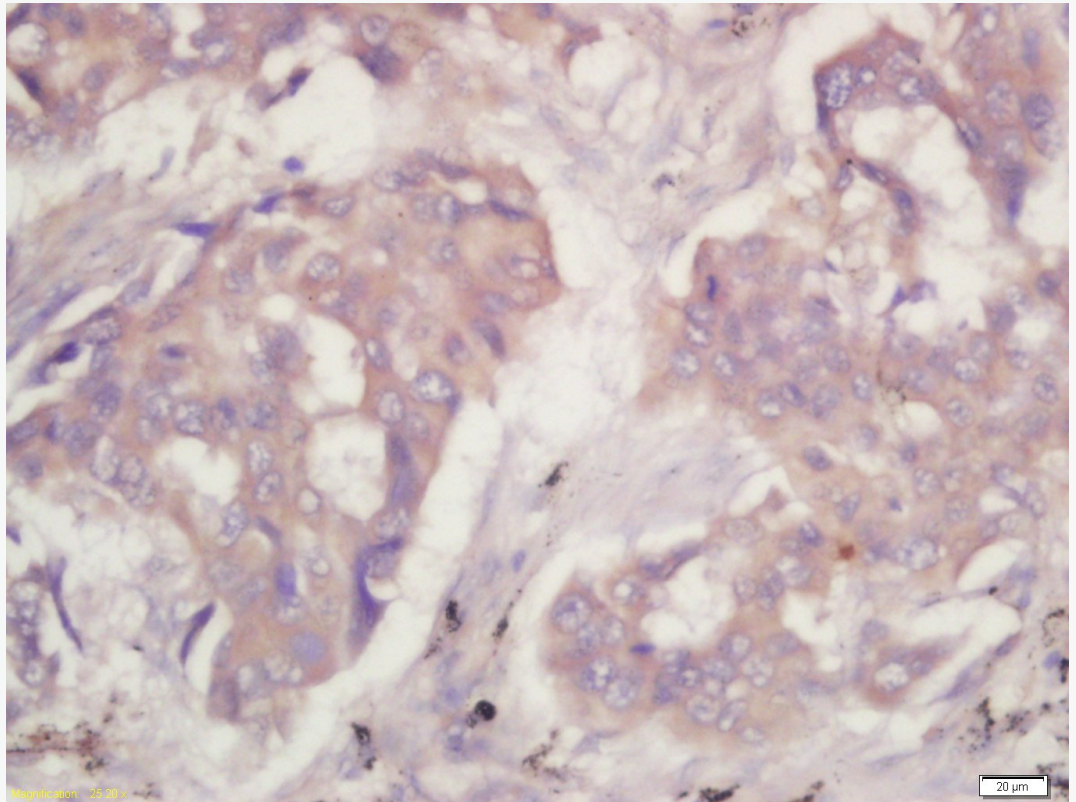
Lane 3: Kidney (Rat) Lysate at 40 ug

Primary: Anti-PKM2 (SL0101R) at 1/1000 dilution

Secondary: IRDye800CW Goat Anti-Rabbit IgG at 1/20000 dilution

Predicted band size: 60 kD

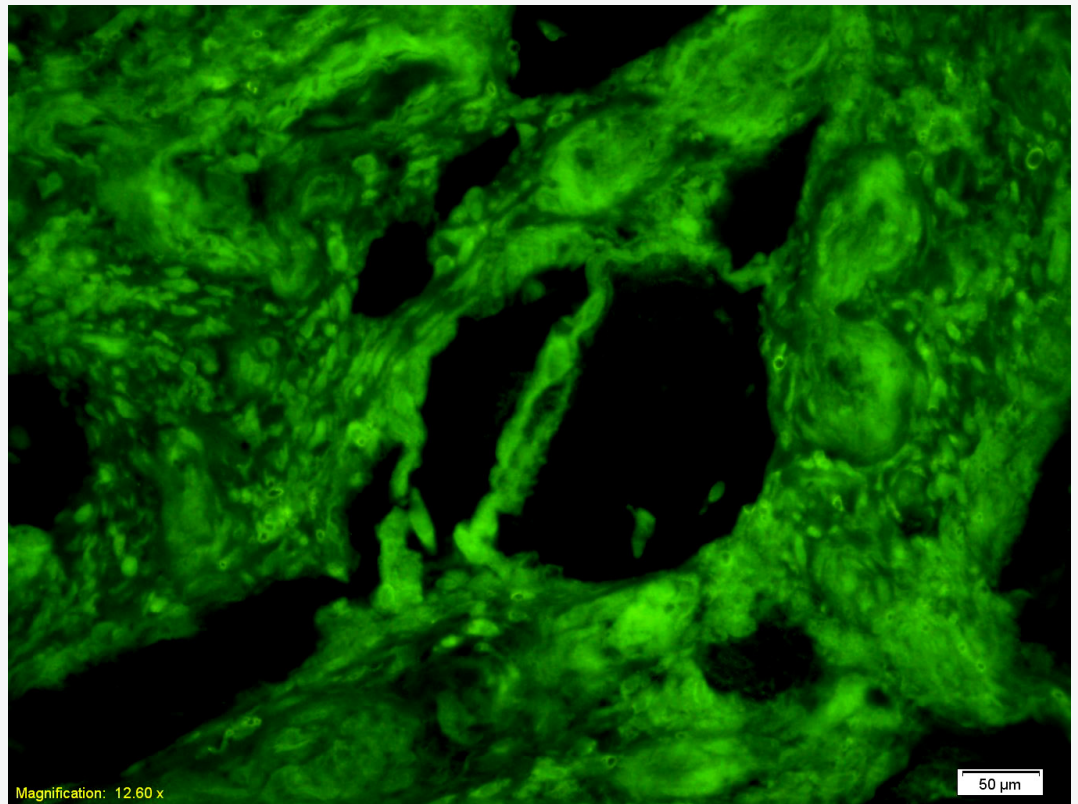
Observed band size: 61 kD



Tissue/cell: human lung cancer tissue; 4% Paraformaldehyde-fixed and paraffin-embedded;

Antigen retrieval: citrate buffer (1M, pH 6.0), Boiling bathing for 15min; Block endogenous peroxidase by 3% Hydrogen peroxide for 30min; Blocking buffer (normal goat serum,C-0005) at 37°C for 20 min;

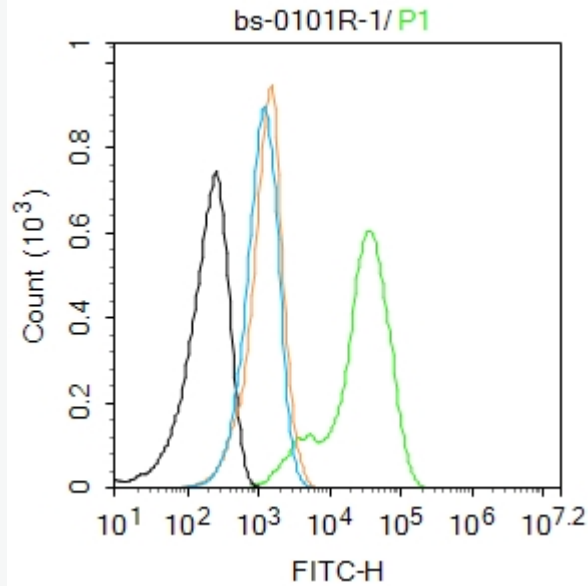
Incubation: Anti-PKM2 Polyclonal Antibody, Unconjugated(SL0101R) 1:200, overnight at 4°C, followed by conjugation to the secondary antibody(SP-0023) and DAB(C-0010) staining



Tissue/cell: human rectal carcinoma;4% Paraformaldehyde-fixed and paraffin-embedded;

Antigen retrieval: citrate buffer (1M, pH 6.0), Boiling bathing for 15min; Blocking buffer (normal goat serum,C-0005) at 37°C for 20 min;

Incubation: Anti-PKM2 Polyclonal Antibody, Unconjugated(SL0101R) 1:200, overnight at 4°C; The secondary antibody was Goat Anti-Rabbit IgG, FITC conjugated(SL0295G-FITC)used at 1:200 dilution for 40 minutes at 37°C.



Blank control:A549.

Primary Antibody (green line): Rabbit Anti-PKM2 antibody (SL0101R)

Dilution: 1 μ g /10⁶ cells;

Isotype Control Antibody (orange line): Rabbit IgG .

Secondary Antibody : Goat anti-rabbit IgG-AF488

Dilution: 1 μ g /test.

Protocol

The cells were fixed with 4% PFA (10min at room temperature)and then permeabilized with 0.1% PBST for 20 min at room temperature. The cells were then incubated in 5%BSA to block non-specific protein-protein interactions for 30 min at room temperature .Cells stained with Primary Antibody for 30 min at room temperature. The secondary antibody used for 40 min at room temperature.



SunLong Biotech Co.,LTD
Tel: 0086-571-56623320 Fax:0086-571-56623318
E-mail:sales@sunlongbiotech.com
www.sunlongbiotech.com

Acquisition of 20,000 events was performed.