

Rabbit Anti-TGF beta 2 Propeptide antibody

SL0100R

Product Name TGF beta 2 Propeptide

Chinese Name 转移生长因子 β 2 抗体

Alias Transforming growth factor beta-2 proprotein; TGFB2; TGF B2; BSC 1 cell growth inhibitor; BSC-1 cell growth inhibitor; BSC1 cell growth inhibitor; Cetermin; G TSF; G-TSF; Glioblastoma derived T cell suppressor ; Glioblastoma derived T cell suppressor factor; Glioblastoma-derived T-cell suppressor factor; GTSF; MGC116892; Polyergin; TGF beta2; TGF-beta-2; TGF-beta2; TGFB 2; TGFB2_HUMAN; Transforming growth factor beta 2; Transforming growth factor beta-2.

Research Area Tumour Signal transduction Growth factors and hormones transcriptional regulatory factor The new supersedes the old

Immunogen Species Rabbit

Clonality Polyclonal

React Species Human,Mouse(predicted:Rat,Rabbit,Cow)

Applications WB=1:500-2000,IHC-P=1:100-500,IHC-F=1:100-500,IF=1:100-500 (Paraffin sections need antigen repair)
not yet tested in other applications.
optimal dilutions/concentrations should be determined by the end user.

Theoretical molecular weight 12/45kDa

Cellular localization Secretory protein

Form Liquid

Concentration 1mg/ml

immunogen KLH conjugated synthetic peptide derived from human TGF-beta 2: 154-197/414

Lsotype IgG

Purification affinity purified by Protein A

Buffer Solution Human,Mouse(predicted:Rat,Rabbit,Cow)1M TBS(pH7.4) with 1% BSA,
Human,Mouse(predicted:Rat,Rabbit,Cow)3% Proclin300 and 50% Glycerol.

Storage Shipped at 4°C. Store at -20 °C for one year. Avoid repeated freeze/thaw cycles.



Attention

This product as supplied is intended for research use only, not for use in human, therapeutic or diagnostic applications.

PubMed

[PubMed](#)

Transforming Growth Factor (TGF) betas mediate many cell to cell interactions that occur during embryonic development. Three TGF betas have been identified in mammals. TGF beta 1, TGF beta 2 and TGF beta 3 are each synthesized as precursor proteins that are very similar in that each is cleaved to yield a 112 amino acid polypeptide that remains associated with the latent portion of the molecule. The TGF beta polypeptides are multifunctional; capable of influencing cell proliferation, differentiation, and other functions in a wide range of cell types. Transformed, as well as nonneoplastic tissues, release transforming growth factors; and essentially all mammalian cells possess a specific TGF receptor. The multi modal nature of TGF beta is seen in its ability to stimulate or inhibit cellular proliferation. In general, cells of mesenchymal origin appear to be stimulated by TGF beta whereas cells of epithelial or neuroectodermal origin are inhibited by the peptide. TGF beta 1, TGF beta 2, and TGF beta 1.2 appear to be equivalent in biological activity, although there does appear to be differences in binding to certain types of receptors. TGF beta 2 is produced by many cell types and has been found in the highest concentration in porcine platelets and mammalian bone. Latent TGF beta 2 is the prominent isoform found in body fluids such as amniotic fluid, breast milk, and the aqueous and vitreous humor of the eye.

**Product
Detail**

Function:

TGF-beta 2 has suppressive effects on interleukin-2 dependent T-cell growth.

Subunit:

Homodimer; disulfide-linked. Heterodimers with TGFB1 and with TGFB3 have been found in bone. Interacts with the serine proteases, HTRA1 and HTRA3. Interacts with ASPN.

Subcellular Location:

Secreted.

Similarity:

Belongs to the TGF-beta family.

SWISS:

P61812

Gene ID:

7042

Database links:

[Entrez Gene: 7042](#) Human

[Entrez Gene: 21808](#) Mouse

[Omim: 190220](#) Human

[SwissProt: P21214](#) Cow

[SwissProt: P61812](#) Human

[SwissProt: P27090](#) Mouse

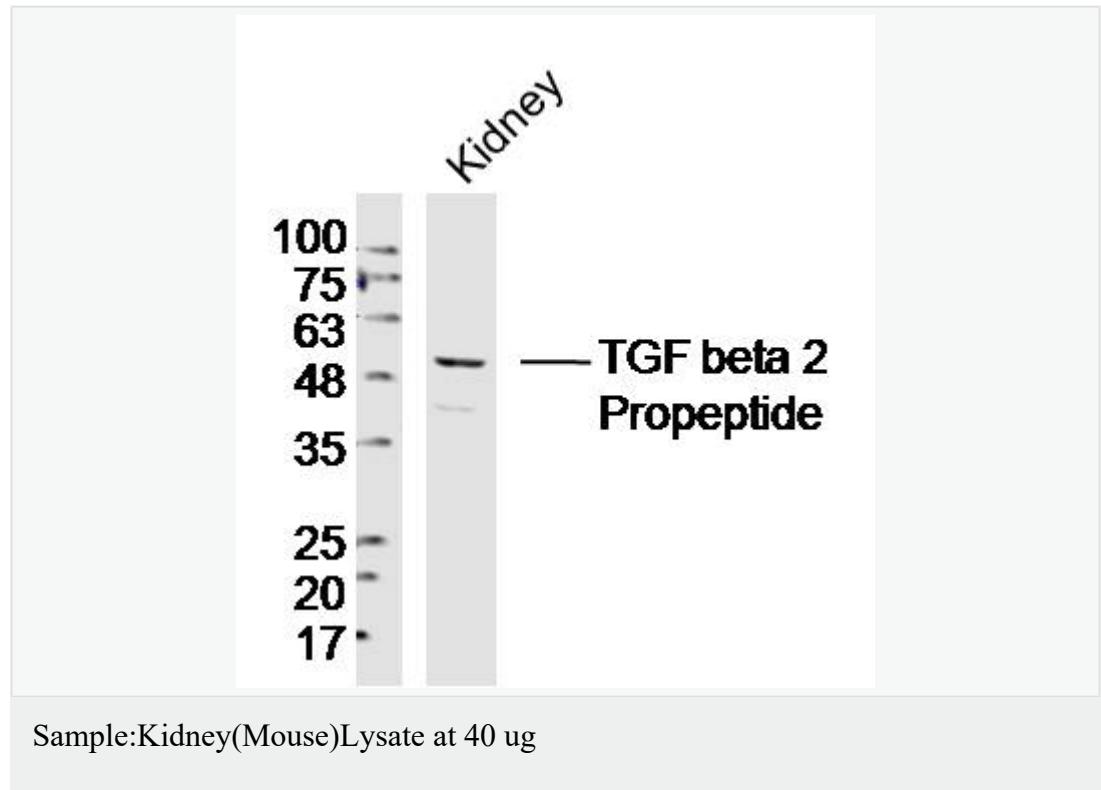
[Unigene: 133379](#) Human

[Unigene: 18213](#) Mouse

Growth factors and hormones (Growth Factor and Hormones)

TGF 是一种多效生长因子,对 epithelial cells 增殖有潜在抑制作用,可抑制 Tumour 生长用于许多恶性 Tumour 如:胃癌、肺癌、膀胱癌、肾癌、前列腺癌、结肠癌等多种恶性 Tumour 的研究。此抗体是 TGF β 2 特异性抗体,与 TGF- β 1 和 TGF- β 3 没有 React Species。

Product
Picture

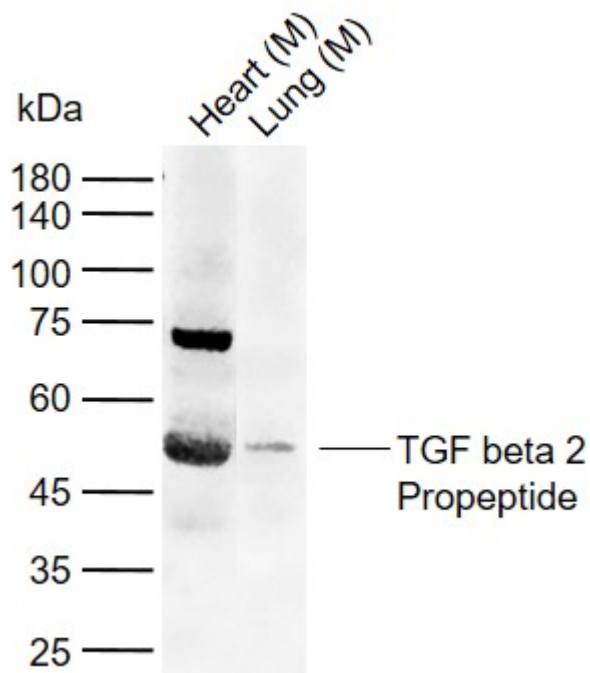


Primary: Anti-TGF beta 2 Propeptide(SL0100R)at 1/300 dilution

Secondary: IRDye800CW Goat Anti-RabbitIgG at 1/20000 dilution

Predicted band size: 12'45kD

Observed band size: 50 kD



Sample:

Lane 1: Mouse Heart tissue lysates

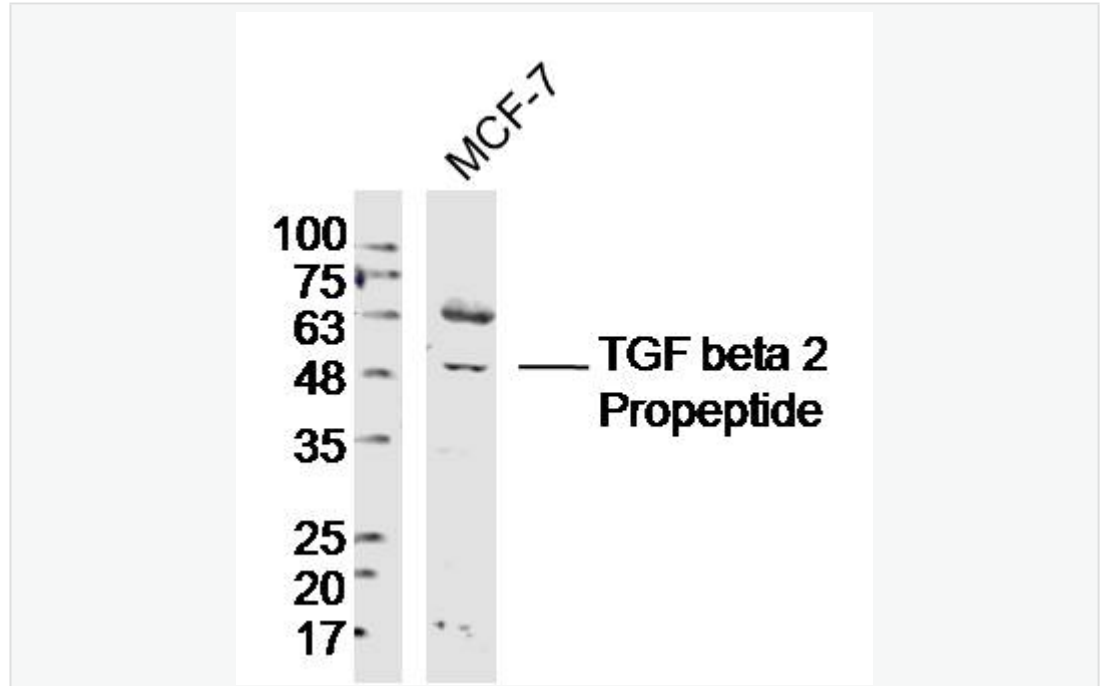
Lane 2: Mouse Lung tissue lysates

Primary: Anti- TGF beta 2 Propeptide (SL0100R) at 1/1000 dilution

Secondary: IRDye800CW Goat Anti-Rabbit IgG at 1/20000 dilution

Predicted band size: 12/45 kDa

Observed band size: 48 kDa



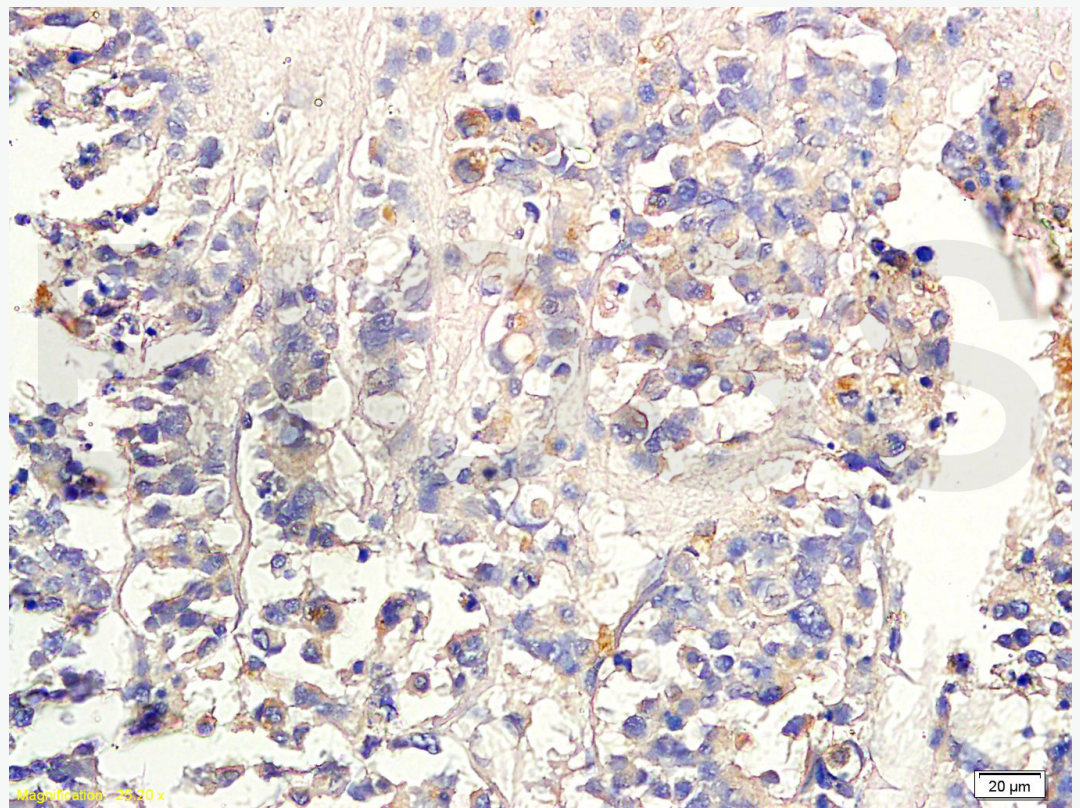
Sample:MCF-7 (Human)Cell Lysate at 40 ug

Primary: Anti-TGF beta 2 Propeptide(SL0100R)at 1/300 dilution

Secondary: IRDye800CW Goat Anti-RabbitIgG at 1/20000 dilution

Predicted band size: 12'45kD

Observed band size: 48kD



Tissue/cell: human colon carcinoma; 4% Paraformaldehyde-fixed and paraffin-embedded;

Antigen retrieval: citrate buffer (Human,Mouse(predicted:Rat,Rabbit,Cow)1M, pH 6.0), Boiling bathing for 15min; Block endogenous peroxidase by 3% Hydrogen peroxide for 30min; Blocking buffer (normal goat serum,C-0005) at 37°C for 20 min;

Incubation: Anti-TGF-beta-2 Polyclonal Antibody, Unconjugated(SL0100R) 1:300, overnight at 4°C, followed by conjugation to the secondary antibody(SP-0023) and DAB(C-0010) staining