

## Rabbit Anti-TGF beta 3 propeptide antibody

SL0099R

**Product Name** TGF beta 3 propeptide

**Chinese Name** 转移生长因子  $\beta$ 3 抗体 (TGF $\beta$ 3)

**Alias** Transforming growth factor beta-3 proprotein; TGFB3; ARVD; FLJ16571; MGC105479; MGC118722; TGF beta 3; TGF beta3; TGF-beta-3; TGF-beta 3; TGFB 3; Transforming growth factor beta-3; TGFB3\_HUMAN.

**Research Area** Signal transduction Stem cells Growth factors and hormones

**Immunogen Species** Rabbit

**Clonality** Polyclonal

**React Species** Human,Mouse,Rat,Pig (predicted:Dog,Rabbit)

WB=1:500-2000,IHC-P=1:100-500,IHC-F=1:100-500,IF=1:100-500,Flow-Cyt=1ug/Test  
(Paraffin sections need antigen repair)

**Applications** not yet tested in other applications.  
optimal dilutions/concentrations should be determined by the end user.

**Theoretical molecular weight** 30/47kDa

**Cellular localization** Secretory protein

**Form** Liquid

**Concentration** 1mg/ml

**immunogen** KLH conjugated synthetic peptide derived from human TGF-beta 3: 41-90/412

**Lsotype** IgG

**Purification** affinity purified by Protein A

**Buffer Solution** 1M TBS(pH7.4) with 1% BSA, 3% Proclin300 and 50% Glycerol.

**Storage** Shipped at 4°C. Store at -20 °C for one year. Avoid repeated freeze/thaw cycles.

**Attention** This product as supplied is intended for research use only, not for use in human, therapeutic or diagnostic applications.

**PubMed** [PubMed](#)

The TGFβ superfamily is composed of numerous growth and differentiation factors, including transforming growth factors β (TGFβ) 1, 2 and 3; placental transforming growth factor (PTGFβ); growth/differentiation factors (GDFs); müllerian inhibiting substance (MIS); bone morphogenic proteins (BMPs); glial cell line-derived neurotrophic factor (GDNF); inhibins or activins (α, β-A, β-B and β-C), Lefty and Nodal. Members of the TGF superfamily are involved in embryonic development and adult tissue homeostasis.

**Function:**

Involved in embryogenesis and cell differentiation.

**Subunit:**

Homodimer; disulfide-linked. Interacts with ASPN.

**Subcellular Location:**

Secreted.

**DISEASE:**

Defects in TGFβ3 are a cause of familial arrhythmogenic right ventricular dysplasia type 1 (ARVD1) [MIM:107970]; also known as arrhythmogenic right ventricular cardiomyopathy 1 (ARVC1). ARVD is an autosomal dominant disease characterized by partial degeneration of the myocardium of the right ventricle, electrical instability, and sudden death. It is clinically defined by electrocardiographic and angiographic criteria; pathologic findings, replacement of ventricular myocardium with fatty and fibrous elements, preferentially involve the right ventricular free wall.

**Product  
Detail**

**Similarity:**

Belongs to the TGF-β family.

**SWISS:**

P10600

**Gene ID:**

7043

**Database links:**

[Entrez Gene: 7043](#) Human

[Entrez Gene: 21809](#) Mouse

[Entrez Gene: 25717](#) Rat

[Omim: 190230](#) Human

[SwissProt: P10600](#) Human

[SwissProt: P17125](#) Mouse

[SwissProt: Q07258](#) Rat

[Unigene: 592317](#) Human

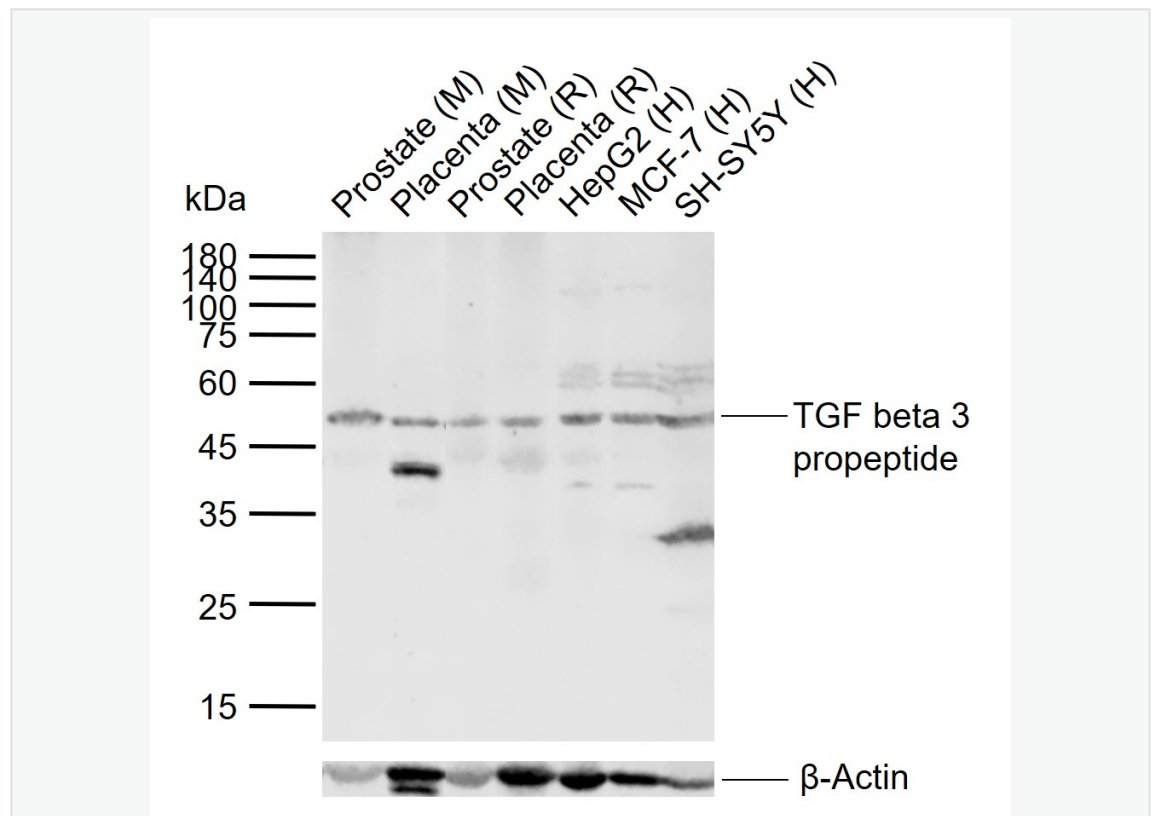
[Unigene: 3992](#) Mouse

[Unigene: 7018](#) Rat

**Growth factors and hormones ( Growth Factor and Hormones )**

TGF 是一种多效生长因子,对 epithelial cells 增值有潜在抑制作用,可抑制 Tumour 生长,用于许多恶性 Tumour 如:胃癌、肺癌、膀胱癌、肾癌、前列腺癌、结肠癌等多种恶性 Tumour 的研究。分子量: 47kDa。此抗体是 TGFβ3 特异性抗体,与 TGF-β 和 TGF-β2 没有 React Species。

**Product  
Picture**



Sample:

Lane 1: Mouse Prostate tissue lysates

Lane 2: Mouse Placenta tissue lysates

Lane 3: Rat Prostate tissue lysates

Lane 4: Rat Placenta tissue lysates

Lane 5: Human HepG2 cell lysates

Lane 6: Human MCF-7 cell lysates

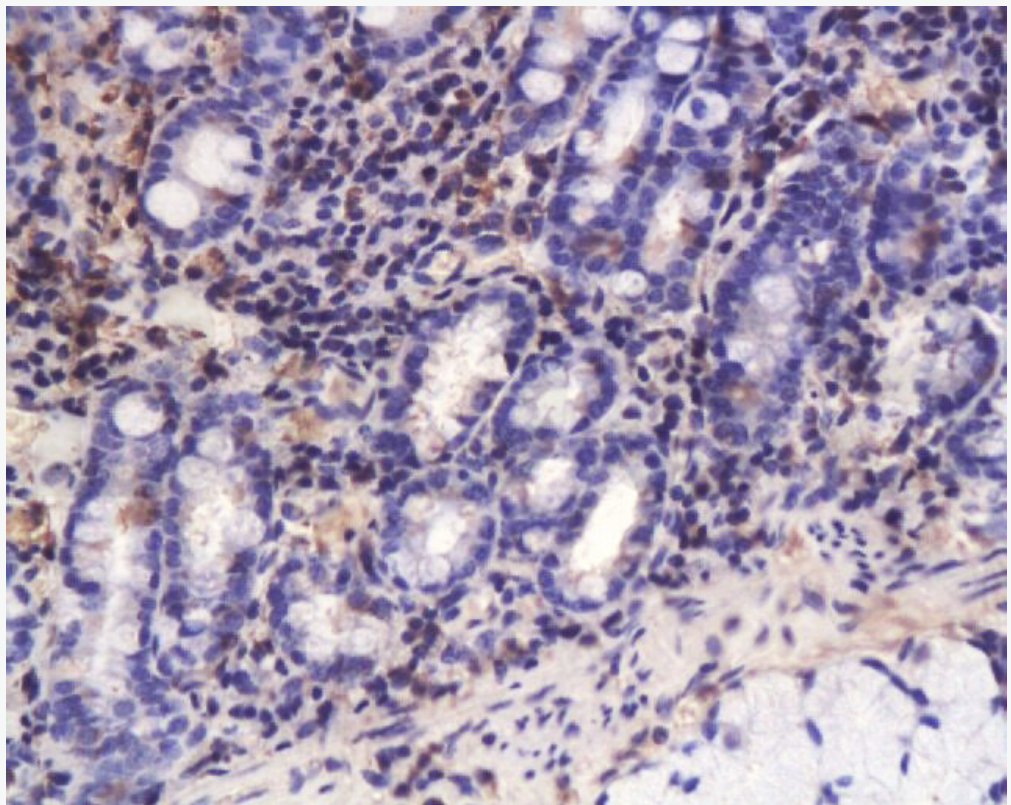
Lane 7: Human SH-SY5Y cell lysates

Primary: Anti-TGF beta 3 propeptide (SL0099R) at 1/1000 dilution

Secondary: IRDye800CW Goat Anti-Rabbit IgG at 1/20000 dilution

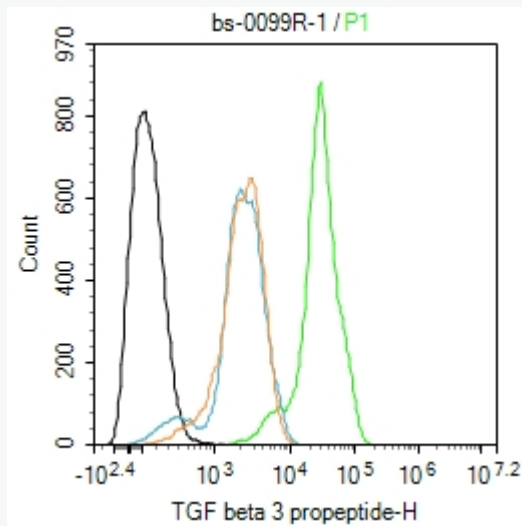
Predicted band size: 30/47 kDa

Observed band size: 47 kDa



Tissue/cell: pig bile duct; 4% Paraformaldehyde-fixed and paraffin-embedded;  
Antigen retrieval: citrate buffer ( 1M, pH 6.0 ), Boiling bathing for 15min; Block endogenous peroxidase by 3% Hydrogen peroxide for 30min; Blocking buffer (normal goat serum,C-0005) at 37°C for 20 min;

Incubation: Anti-TGF-beta-3 Polyclonal Antibody, Unconjugated(SL0099R) 1:200, overnight at 4°C, followed by conjugation to the secondary antibody(SP-0023) and DAB(C-0010) staining



Blank control: SHSY5Y.

Primary Antibody (green line): Rabbit Anti-TGF beta 3 propeptide antibody (SL0099R)

Dilution: 1ug/Test;

Secondary Antibody : Goat anti-rabbit IgG-FITC

Dilution: 0.5ug/Test.

### Protocol

The cells were fixed with 4% PFA (10min at room temperature)and then permeabilized with 90% ice-cold methanol for 20 min at -20°C.The cells were then incubated in 5%BSA to block non-specific protein-protein interactions for 30 min at room temperature .Cells stained with Primary Antibody for 30 min at room temperature. The secondary antibody used for 40 min at room temperature. Acquisition of 20,000 events was performed.