

## Rabbit Anti-Secretin receptor antibody

SL0089R

<b>Product Name</b>	Secretin receptor
<b>Chinese Name</b>	分泌素受体抗体
<b>Alias</b>	6530402O03Rik, MGC102218, MGC93381, SCTR, SR; Secretin receptor; SCT-R; SCTR_HUMAN.
<b>Research Area</b>	Signal transduction Growth factors and hormones The cell membrane 受体 Endocrinopathy
<b>Immunogen Species</b>	Rabbit
<b>Clonality</b>	Polyclonal
<b>React Species</b>	Mouse, (predicted: Human, Rat, Dog, Cow, Rabbit, Sheep, ) IHC-P=1:100-500,IHC-F=1:100-500,IF=1:100-500 (Paraffin sections need antigen repair)
<b>Applications</b>	not yet tested in other applications. optimal dilutions/concentrations should be determined by the end user.
<b>Theoretical molecular weight</b>	46kDa
<b>Cellular localization</b>	The cell membrane
<b>Form</b>	Liquid
<b>Concentration</b>	1mg/ml
<b>immunogen</b>	KLH conjugated synthetic peptide derived from human Secretin receptor: 188-280/440 <Extracellular>
<b>Lsotype</b>	IgG
<b>Purification</b>	affinity purified by Protein A
<b>Buffer Solution</b>	1M TBS(pH7.4) with 1% BSA, 3% Proclin300 and 50% Glycerol.
<b>Storage</b>	Shipped at 4°C. Store at -20 °C for one year. Avoid repeated freeze/thaw cycles.
<b>Attention</b>	This product as supplied is intended for research use only, not for use in human, therapeutic or diagnostic applications.
<b>PubMed</b>	<a href="#">PubMed</a>



---

The receptor for secretin is a class 2 (or class B) G protein coupled receptor that signals through Gs to stimulate cAMP production. Along with its traditional role in the pancreas, studies in secretin-deficient mice have shown miscommunication between the CA3 Schaffer collateral and CA1 pyramidal neurons, causing a deficiency in synaptic transmission. This miscommunication of CA1 dendrites is found in Autism, Rett Syndrome, and most forms of mental retardation, suggesting secretin could be a potential target for treatment of these disorders.

**Function:**

This is a receptor for secretin. The activity of this receptor is mediated by G proteins which activate adenylyl cyclase.

**Subcellular Location:**

Cell membrane; Multi-pass membrane protein.

**Product  
Detail**

**Similarity:**

Belongs to the G-protein coupled receptor 2 family.

**SWISS:**

P47872

**Gene ID:**

6344

**Database links:**

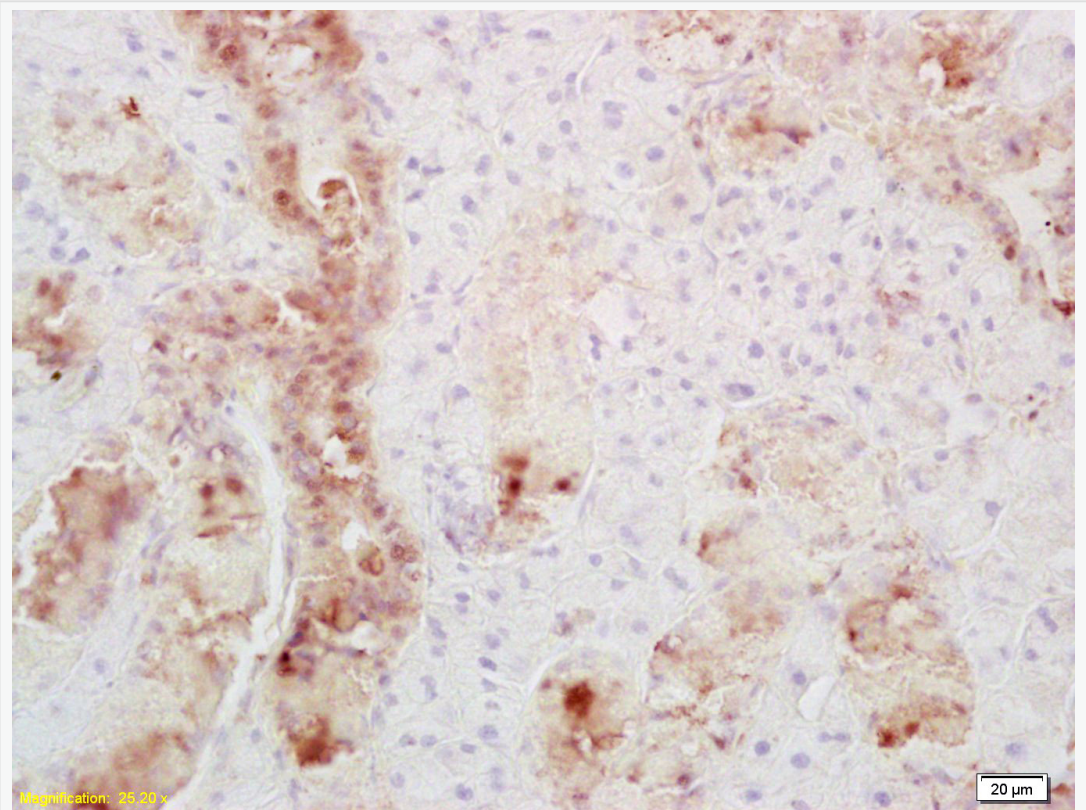
[Entrez Gene: 6344](#) Human

[Omim: 182098](#) Human

[SwissProt: P47872](#) Human

[Unigene: 42091](#) Human

**Product  
Picture**



Tissue/cell: mouse thyroid tissue; 4% Paraformaldehyde-fixed and paraffin-embedded;

Antigen retrieval: citrate buffer ( 1M, pH 6.0 ), Boiling bathing for 15min; Block endogenous peroxidase by 3% Hydrogen peroxide for 30min; Blocking buffer (normal goat serum,C-0005) at 37°C for 20 min;

Incubation: Anti-Secretin receptor Polyclonal Antibody, Unconjugated(SL0089R) 1:200, overnight at 4°C, followed by conjugation to the secondary antibody(SP-0023) and DAB(C-0010) staining