



SUNLONG

SunLong Biotech Co.,LTD

Tel: 0086-571-56623320 Fax:0086-571-56623318

E-mail:sales@sunlongbiotech.com

www.sunlongbiotech.com

## Rabbit Anti-Secretin antibody

SL0088R

<b>Product Name</b>	Secretin
<b>Chinese Name</b>	分泌素抗体
<b>Alias</b>	SCT; Secretin precursor; SECR_HUMAN; Secr.
<b>Research Area</b>	Signal transduction Growth factors and hormones Endocrinopathy
<b>Immunogen Species</b>	Rabbit
<b>Clonality</b>	Polyclonal
<b>React Species</b>	Human,Rat(predicted:Mouse) WB=1:500-2000,IHC-P=1:100-500,IHC-F=1:100-500,IF=1:100-500,ELISA=1:5000-10000 (Paraffin sections need antigen repair)
<b>Applications</b>	not yet tested in other applications. optimal dilutions/concentrations should be determined by the end user.
<b>Theoretical molecular weight</b>	13kDa
<b>Cellular localization</b>	Secretory protein
<b>Form</b>	Liquid
<b>Concentration</b>	1mg/ml
<b>immunogen</b>	KLH conjugated synthetic peptide derived from human Secretin: 28-54/121
<b>Lsotype</b>	IgG
<b>Purification</b>	affinity purified by Protein A
<b>Buffer Solution</b>	Human,Rat(predicted:Mouse)1M TBS(pH7.4) with 1% BSA, Human,Rat(predicted:Mouse)3% Proclin300 and 50% Glycerol.
<b>Storage</b>	Shipped at 4°C. Store at -20 °C for one year. Avoid repeated freeze/thaw cycles.
<b>Attention</b>	This product as supplied is intended for research use only, not for use in human, therapeutic or diagnostic applications.
<b>PubMed</b>	<a href="#">PubMed</a>
<b>Product Detail</b>	Secretin belongs to the glucagon family. This protein is an endocrine hormone and its major site of production is the endocrine S cells located in the proximal small intestinal mucosa.

The release of active secretin is stimulated by either fatty acids or an acidic pH in the duodenum. This hormone stimulates the secretion of bicarbonate-rich pancreatic fluids and has also been shown to regulate the growth and development of the stomach, small intestine, and pancreas. Secretin deficiency has been implicated in autistic syndrome, suggesting that the hormone could have a neuroendocrine function in addition to its role in digestion.

**Function:**

Stimulates formation of NaHCO<sub>3</sub>-rich pancreatic juice and secretion of NaHCO<sub>3</sub>-rich bile and inhibits HCl production by the stomach.

**Subcellular Location:**

Secreted.

**Similarity:**

Belongs to the glucagon family.

**SWISS:**

P09683

**Gene ID:**

6343

**Database links:**

[Entrez Gene: 6343](#) Human

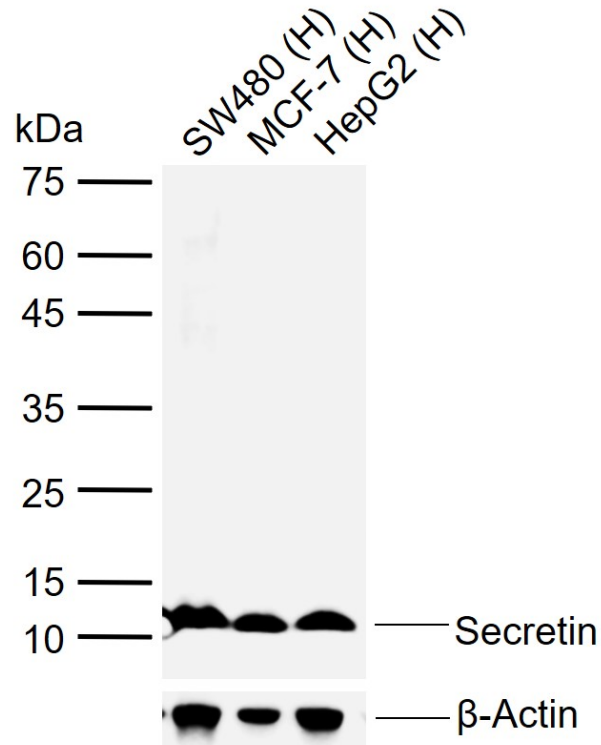
[Omim: 182099](#) Human

[SwissProt: P09683](#) Human

[Unigene: 632324](#) Human

Secretin 促胰液素或胰泌素，由十二指肠分泌的一种多肽激素，可刺激胰液的释放。

**Product  
Picture**



Sample:

Lane 11: Human SW480 cell lysates

Lane 12: Human MCF-7 cell lysates

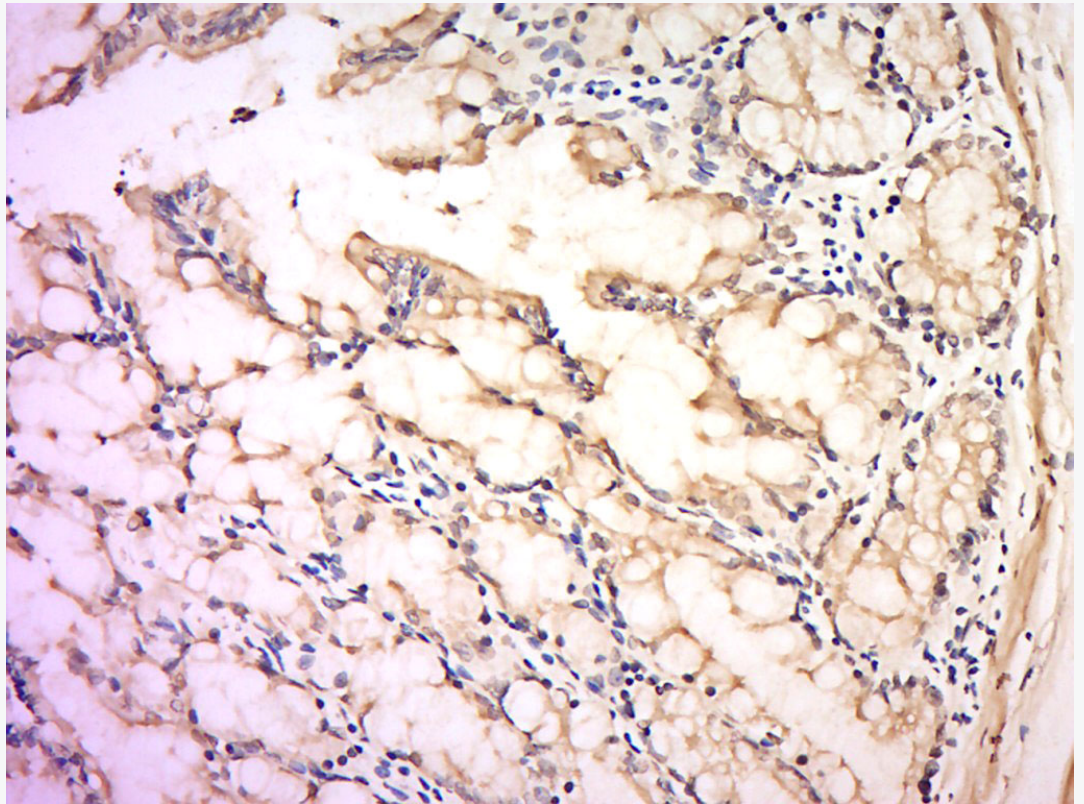
Lane 13: Human HepG2 cell lysates

Primary: Anti-Secretin (SL0088R) at 1/1000 dilution

Secondary: IRDye800CW Goat Anti-Rabbit IgG at 1/20000 dilution

Predicted band size: 13 kDa

Observed band size: 13 kDa



Tissue/cell: rat intestine tissue ; 4% Paraformaldehyde-fixed and paraffin-embedded;  
Antigen retrieval: citrate buffer ( Human,Rat(predicted:Mouse)1M, pH 6.0 ), Boiling  
bathing for 15min; Block endogenous peroxidase by 3% Hydrogen peroxide for 30min;  
Blocking buffer (normal goat serum,C-0005) at 37°C for 20 min;  
Incubation: Anti-Secrein Polyclonal Antibody, Unconjugated(SL0088R) 1:200,  
overnight at 4°C, followed by conjugation to the secondary antibody(SP-0023) and  
DAB(C-0010) staining