

Rabbit Anti-Caspase-6 subunit p18 antibody

SL0084R

Product Name Caspase-6 subunit p18

Chinese Name 半胱氨酸蛋白酶蛋白-6 抗体

Alias Caspase-6; Caspase-6 p18; cleaved Caspase-6 p18; Apoptosis Related Cysteine Protease; Apoptotic cysteine protease MCH2; Apoptotic protease MCH 2; Apoptotic protease MCH2; Casp 6; Casp6; Caspase 6 apoptosis related cysteine protease; Caspase 6 precursor; Caspase6; Human cysteine protease Mch2 isoform alpha; Mch 2; Mch2; CASP6_HUMAN; caspase-6 isoform alpha precursor.

Research Area Cell biology Neurobiology Signal transduction Apoptosis

Immunogen Species Rabbit

Clonality Polyclonal

React Species Human, Mouse, (predicted: Rat, Dog, Rabbit,)

Applications WB=1:500-2000,IHC-P=1:100-500,IHC-F=1:100-500,IF=1:100-500 (Paraffin sections need antigen repair)
not yet tested in other applications.
optimal dilutions/concentrations should be determined by the end user.

Theoretical molecular weight 18/33kDa

Cellular localization cytoplasmic

Form Liquid

Concentration 1mg/ml

immunogen KLH conjugated synthetic peptide derived from human Caspase-6 subunit p18: 27-130/293

Lsotype IgG

Purification affinity purified by Protein A

Buffer Solution 1M TBS(pH7.4) with 1% BSA, 3% Proclin300 and 50% Glycerol.

Storage Shipped at 4°C. Store at -20 °C for one year. Avoid repeated freeze/thaw cycles.

Attention

This product as supplied is intended for research use only, not for use in human, therapeutic or diagnostic applications.

PubMed

[PubMed](#)

This gene encodes a protein which is a member of the cysteine-aspartic acid protease (caspase) family. Sequential activation of caspases plays a central role in the execution-phase of cell apoptosis. Caspases exist as inactive proenzymes which undergo proteolytic processing at conserved aspartic residues to produce two subunits, large and small, that dimerize to form the active enzyme. This protein is processed by caspases 7, 8 and 10, and is thought to function as a downstream enzyme in the caspase activation cascade. Alternative splicing of this gene results in two transcript variants that encode different isoforms. [provided by RefSeq, Jul 2008]

Function:

Involved in the activation cascade of caspases responsible for apoptosis execution. Cleaves poly(ADP-ribose) polymerase in vitro, as well as lamins. Overexpression promotes programmed cell death.

Subunit:

Heterotetramer that consists of two anti-parallel arranged heterodimers, each one formed by a 18 kDa (p18) and a 11 kDa (p11) subunit. Interacts with BIRC6/bruce.

Subcellular Location:

Cytoplasm.

**Product
Detail**

Post-translational modifications:

Cleavages by caspase-3, caspase-8 or -10 generate the two active subunits.

Similarity:

Belongs to the peptidase C14A family.

SWISS:

P55212

Gene ID:

839

Database links:

[Entrez Gene: 839](#) Human

[Entrez Gene: 12368](#) Mouse

[Entrez Gene: 83584](#) Rat

[Omim: 601532](#) Human

[SwissProt: P55212](#) Human

[SwissProt: O08738](#) Mouse

[SwissProt: O35397](#) Rat

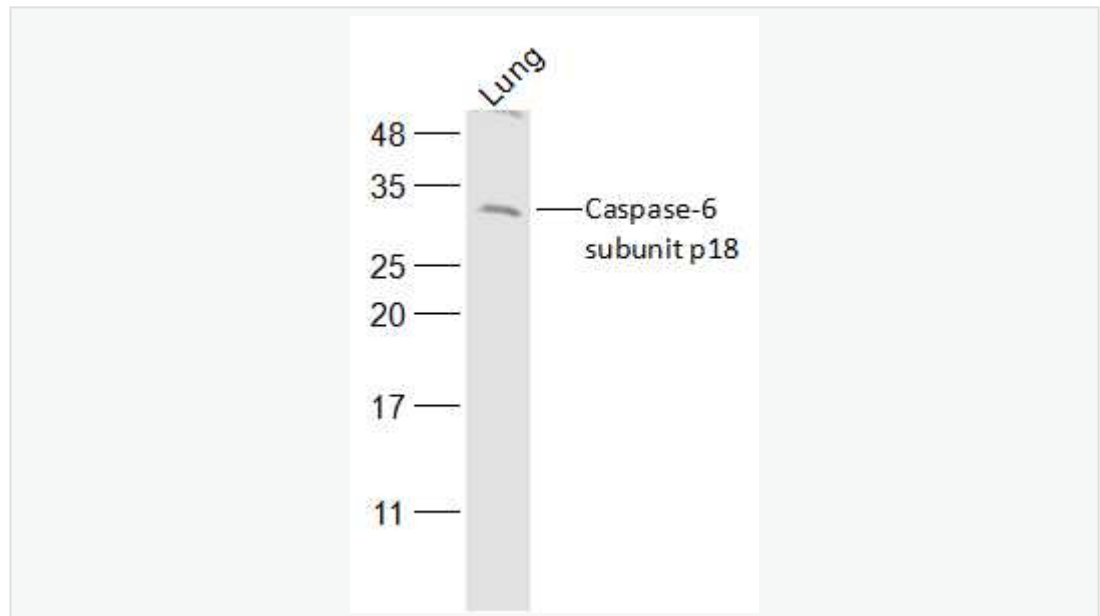
[Unigene: 654616](#) Human

[Unigene: 281379](#) Mouse

[Unigene: 88160](#) Rat

Caspase-6 与 Caspase-3 有 38%的同源性，属胱氨酸-天冬氨酸蛋白酶家族。在凋亡执行阶段起中心作用，可被 Caspase-7、-8、-10 剪切。它是唯一一个可以剪切核纤层蛋白的 Caspase。

Product Picture



Sample:

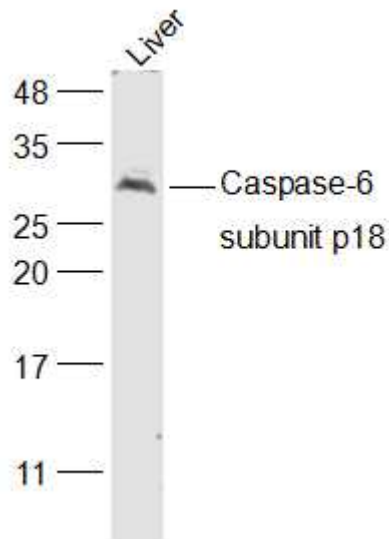
Lung (Mouse) Lysate at 40 ug

Primary: Anti-Caspase-6 subunit p18 (SL0084R) at 1/500 dilution

Secondary: IRDye800CW Goat Anti-Rabbit IgG at 1/20000 dilution

Predicted band size: 18/33 kD

Observed band size: 33 kD



Sample:

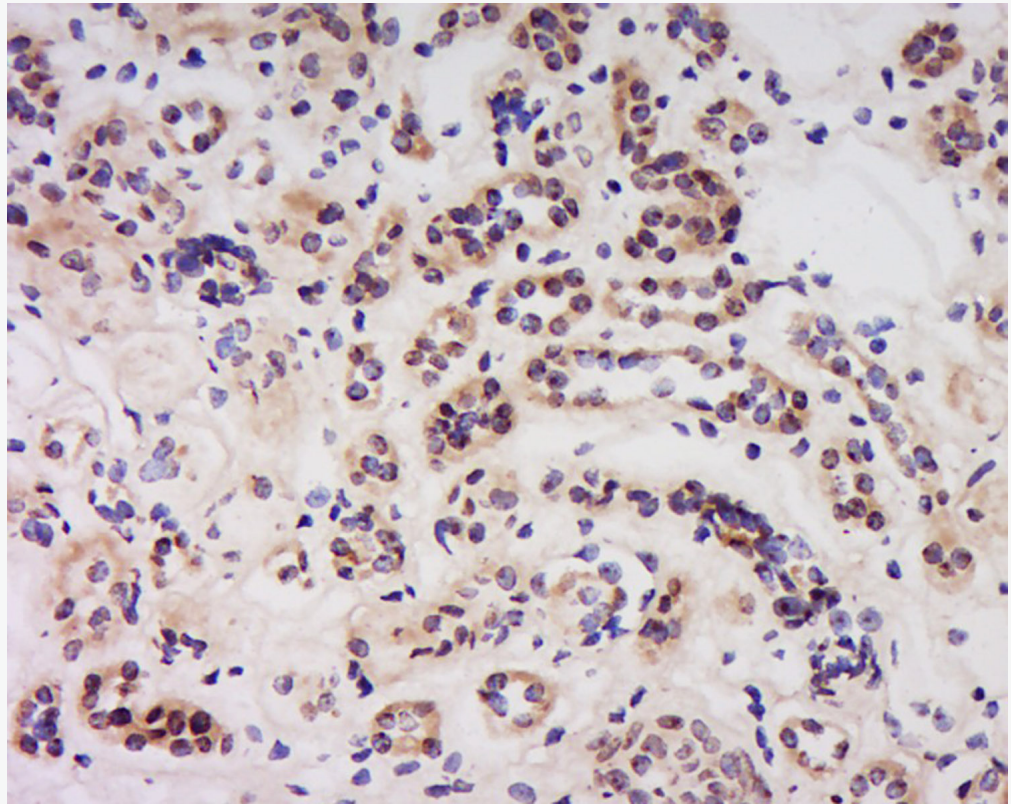
Liver (Mouse) Lysate at 40 ug

Primary: Anti-Caspase-6 subunit p18 (SL0084R) at 1/500 dilution

Secondary: IRDye800CW Goat Anti-Rabbit IgG at 1/20000 dilution

Predicted band size: 18/33 kD

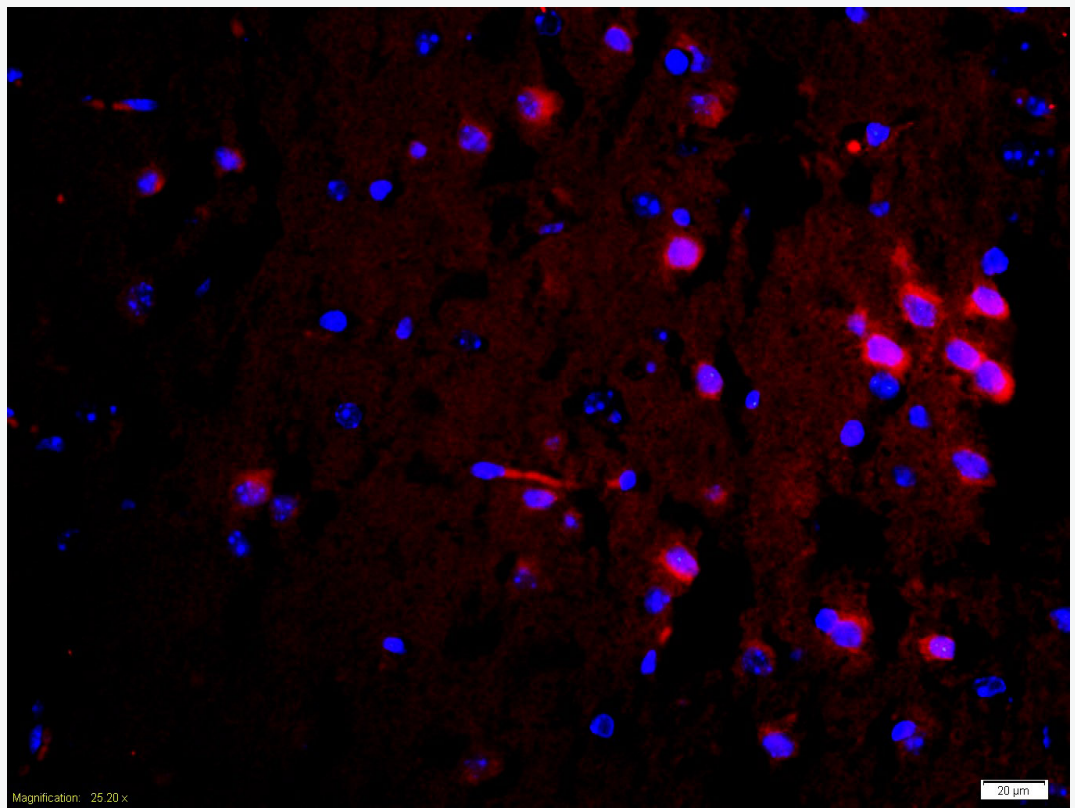
Observed band size: 33 kD



Tissue/cell: Human kidney tissue; 4% Paraformaldehyde-fixed and paraffin-embedded;

Antigen retrieval: citrate buffer (1M, pH 6.0), Boiling bathing for 15min; Block endogenous peroxidase by 3% Hydrogen peroxide for 30min; Blocking buffer (normal goat serum,C-0005) at 37°C for 20 min;

Incubation: Anti- Caspase-6 Polyclonal Antibody, Unconjugated(SL0084R) 1:200, overnight at 4°C, followed by conjugation to the secondary antibody(SP-0023) and DAB(C-0010) staining



Tissue/cell: mouse brain tissue;4% Paraformaldehyde-fixed and paraffin-embedded;

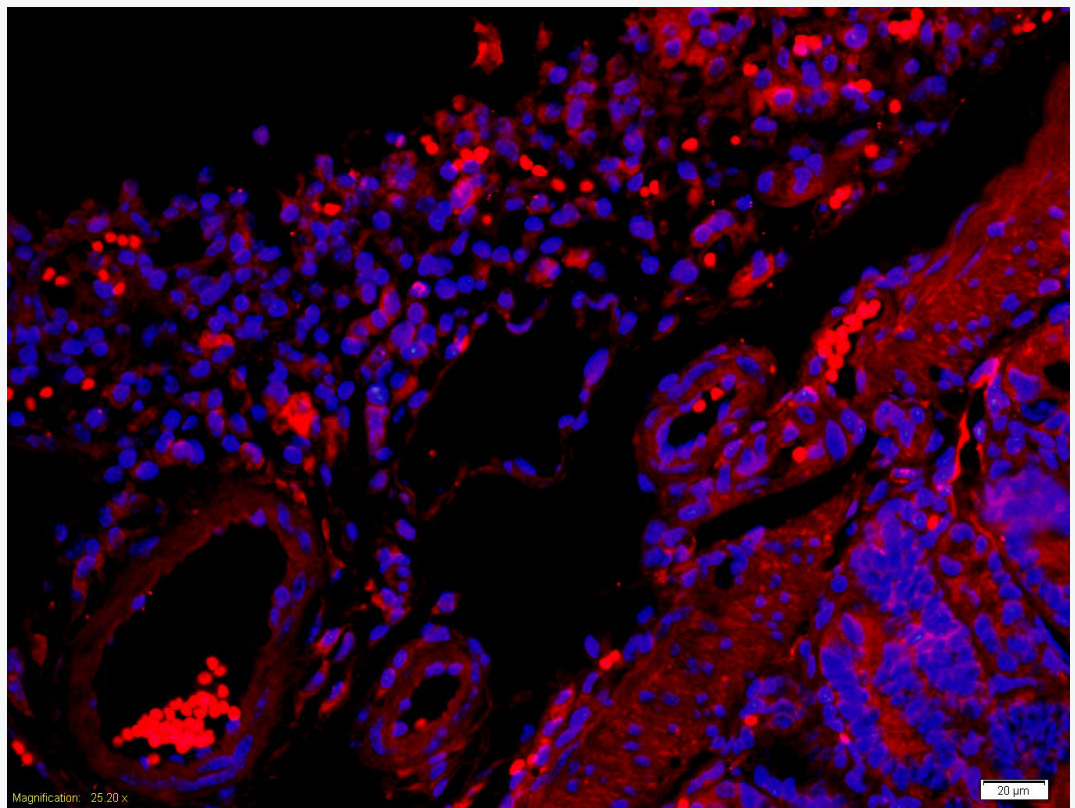
Antigen retrieval: citrate buffer (1M, pH 6.0), Boiling bathing for 15min;

Blocking buffer (normal goat serum,C-0005) at 37°C for 20 min;

Incubation: Anti-Caspase-6 Polyclonal Antibody, Unconjugated(SL0084R)

1:200, overnight at 4°C; The secondary antibody was Goat Anti-Rabbit IgG, Cy3 conjugated(SL0295G-Cy3)used at 1:200 dilution for 40 minutes at 37°C.

DAPI(5ug/ml,blue,C-0033) was used to stain the cell nuclei



Tissue/cell: mouse intestine tissue;4% Paraformaldehyde-fixed and paraffin-embedded;

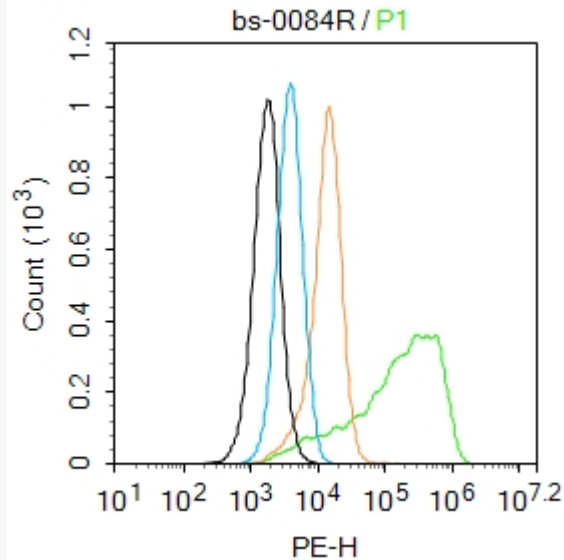
Antigen retrieval: citrate buffer (1M, pH 6.0), Boiling bathing for 15min;

Blocking buffer (normal goat serum,C-0005) at 37°C for 20 min;

Incubation: Anti-Caspase-6 Polyclonal Antibody, Unconjugated(SL0084R)

1:200, overnight at 4°C; The secondary antibody was Goat Anti-Rabbit IgG, Cy3 conjugated(SL0295G-Cy3)used at 1:200 dilution for 40 minutes at 37°C.

DAPI(5ug/ml,blue,C-0033) was used to stain the cell nuclei



Blank control:U-2OS.

Primary Antibody (green line): Rabbit Anti-Caspase-6 subunit p18 antibody (SL0084R)

Dilution: 2 μ g /10⁶ cells;

Isotype Control Antibody (orange line): Rabbit IgG .

Secondary Antibody : Goat anti-rabbit IgG-PE

Dilution: 1 μ g /test.

Protocol

The cells were fixed with 4% PFA (10min at room temperature)and then permeabilized with 0.1% PBST for 20 min at room temperature. The cells were then incubated in 5%BSA to block non-specific protein-protein interactions for 30 min at room temperature .Cells stained with Primary Antibody for 30 min at room temperature. The secondary antibody used for 40 min at room temperature.



SunLong Biotech Co.,LTD
Tel: 0086-571-56623320 Fax:0086-571-56623318
E-mail:sales@sunlongbiotech.com
www.sunlongbiotech.com

Acquisition of 20,000 events was performed.