

Rabbit Anti-Neurturin antibody

SL0073R

Product Name	Neurturin
Chinese Name	神经营养因子抗体
Alias	Neurturin precursor; Neurturin; NRTN; NTN; NRTN_HUMAN.
Research Area	Developmental biology Neurobiology
Immunogen Species	Rabbit
Clonality	Polyclonal
React Species	Human, Mouse, (predicted: Rat, Dog, Cow,) WB=1:500-2000,IHC-P=1:100-500,IHC-F=1:100-500,IF=1:100-500 (Paraffin sections need antigen repair)
Applications	not yet tested in other applications. optimal dilutions/concentrations should be determined by the end user.
Theoretical molecular weight	21kDa
Cellular localization	Secretory protein
Form	Liquid
Concentration	1mg/ml
immunogen	KLH conjugated synthetic peptide derived from human Neurturin: 151-197/197
Lsotype	IgG
Purification	affinity purified by Protein A
Buffer Solution	1M TBS(pH7.4) with 1% BSA, 3% Proclin300 and 50% Glycerol.
Storage	Shipped at 4°C. Store at -20 °C for one year. Avoid repeated freeze/thaw cycles.
Attention	This product as supplied is intended for research use only, not for use in human, therapeutic or diagnostic applications.
PubMed	PubMed
Product Detail	Human Neurturin (NTN) and Human GDNF comprise a family of TGF-beta related neurotrophic factor which have trophic influences on a variety of neuronal

populations. Neurturin promotes the survival of certain sympathetic and sensory neurins through interaction with distinct set of GDNF-like receptors

Function:

Supports the survival of sympathetic neurons in culture. May regulate the development and maintenance of the CNS. Might control the size of non-neuronal cell population such as haemopoietic cells.

Subunit:

Homodimer; disulfide-linked.

Subcellular Location:

Secreted.

DISEASE:

Note=Genetic variations in NRTN may contribute to Hirschsprung disease, in association with mutations of RET gene, and possibly mutations in other loci. Hirschsprung disease is a disorder of neural crest development is characterized by the absence of intramural ganglion cells in the hindgut, often resulting in intestinal obstruction.

Similarity:

Belongs to the TGF-beta family. GDNF subfamily.

SWISS:

Q99748

Gene ID:

4902

Database links:

[Entrez Gene: 4902](#) Human

[Entrez Gene: 18188](#) Mouse

[Entrez Gene: 84423](#) Rat

[Omim: 602018](#) Human

[SwissProt: Q99748](#) Human

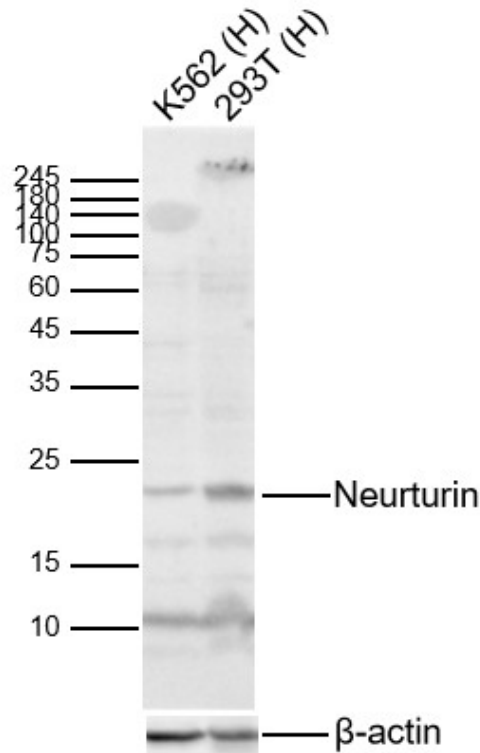
[SwissProt: P97463](#) Mouse

[Unigene: 234775](#) Human

[Unigene: 8074](#) Mouse

[Unigene: 21952](#) Rat

**Product
Picture**



Sample:

Lane 1: Human K562 cell Lysates

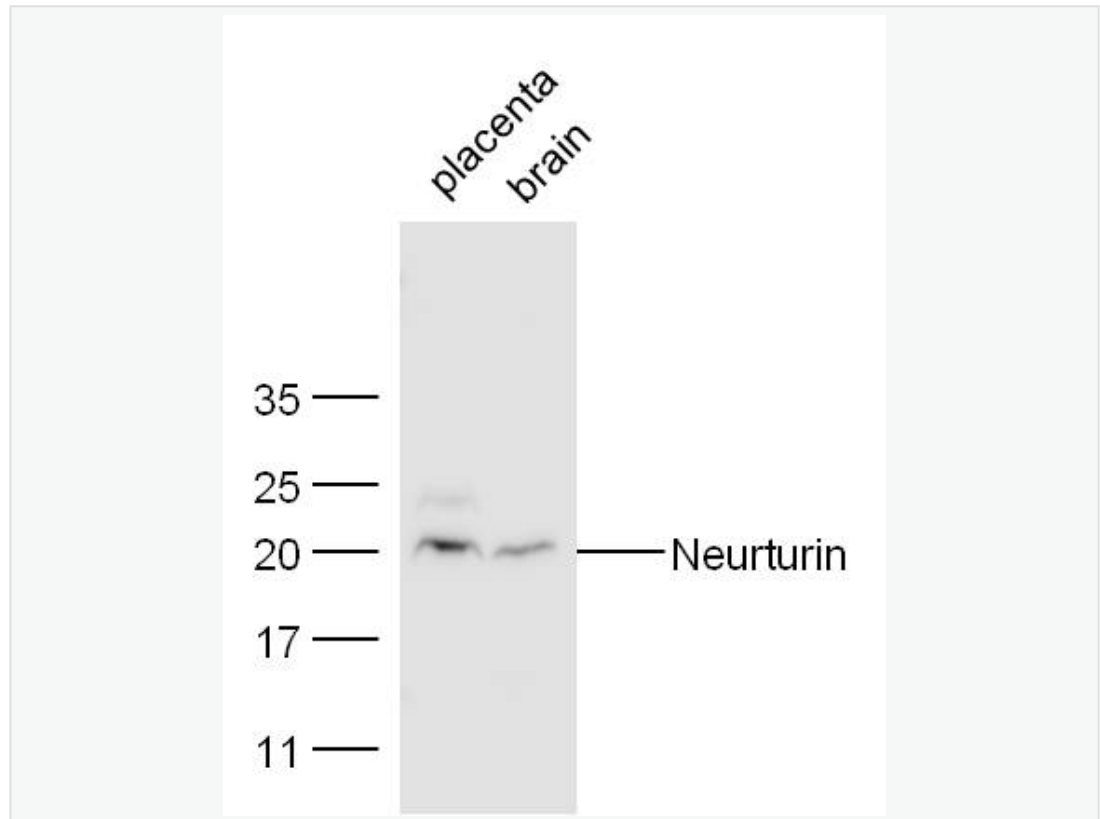
Lane 2: Human 293T cell Lysates

Primary: Anti-Neurturin (SL0073R) at 1/1000 dilution

Secondary: IRDye800CW Goat Anti-Rabbit IgG at 1/20000 dilution

Predicted band size: 21kDa

Observed band size: 21kDa



Sample:

Placenta(Mouse)lysate at 30 ug;

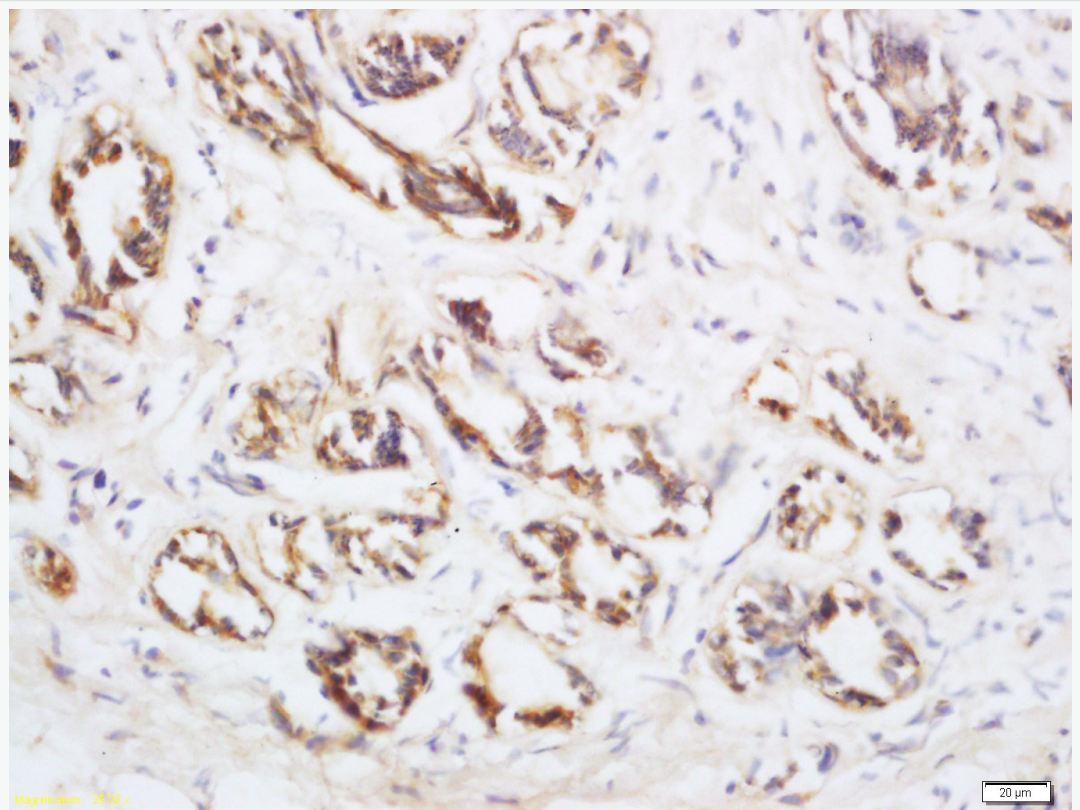
Brain(Mouse) lysate at 30 ug;

Primary: Anti- Neurturin (SL0073R) at 1:300 dilution;

Secondary: HRP conjugated Goat-Anti-rabbit IgG(SL0295G-HRP) at 1: 5000 dilution;

Predicted band size: 21 kD

Observed band size: 21 kD



Tissue/cell: human breast carcinoma; 4% Paraformaldehyde-fixed and paraffin-embedded;

Antigen retrieval: citrate buffer (1M, pH 6.0), Boiling bathing for 15min; Block endogenous peroxidase by 3% Hydrogen peroxide for 30min; Blocking buffer (normal goat serum,C-0005) at 37°C for 20 min;

Incubation: Anti-Neurturin Polyclonal Antibody, Unconjugated(SL0073R) 1:100, overnight at 4°C, followed by conjugation to the secondary antibody(SP-0023) and DAB(C-0010) staining