

Rabbit Anti-TGF alpha antibody

SL0066R

Product Name TGF alpha

Chinese Name 转移生长因子 α 抗体

Alias EGF like TGF; ETGF; TFGA; TGF A; TGF type 1; TGFA; Transforming growth factor alpha; Transforming growth factor alpha precursor; Wa1; Waved 1; TGFA_HUMAN; TGF α ; TGF- α ; T

Research Area Tumour Cardiovascular Signal transduction Growth factors and hormones cell factor

Immunogen Species Rabbit

Clonality Polyclonal

React Species Human, Mouse, Rat,

WB=1:500-2000

Applications not yet tested in other applications.
optimal dilutions/concentrations should be determined by the end user.

Theoretical molecular weight 17kDa

Cellular localization The cell membrane Extracellular matrix Secretory protein

Form Liquid

Concentration 1mg/ml

immunogen KLH conjugated synthetic peptide derived from human TGF-alpha : 40-89/160

Lsotype IgG

Purification affinity purified by Protein A

Buffer Solution 1M TBS(pH7.4) with 1% BSA, 3% Proclin300 and 50% Glycerol.

Storage Shipped at 4°C. Store at -20 °C for one year. Avoid repeated freeze/thaw cycles.

Attention This product as supplied is intended for research use only, not for use in human, therapeutic or diagnostic applications.

PubMed [PubMed](#)

Product Detail This gene encodes a growth factor that is a ligand for the epidermal growth factor receptor, which activates a signaling pathway for cell proliferation, differentiation and development. This protein

act as either a transmembrane-bound ligand or a soluble ligand. This gene has been associated with many types of cancers, and it may also be involved in some cases of cleft lip/palate. Alternatively spliced transcript variants encoding different isoforms have been found for this gene. [provided by RefSeq, Sep 2011].

Function:

TGF alpha is a mitogenic polypeptide that is able to bind to the EGF receptor/EGFR and to act synergistically with TGF beta to promote anchorage-independent cell proliferation in soft agar (100% similarity). Inhibitor of acid secretion. Inhibitor of aminopyrine uptake in parietal cells (in vitro).

Subunit:

Interacts with the PDZ domains of MAGI3, SDCBP and SNTA1. The interaction with SDCBP, required for the targeting to the cell surface. In the endoplasmic reticulum, in its immature form (with a prosegment and lacking full N-glycosylation), interacts with CNIH. In the Golgi apparatus, forms a complex with CNIH and GORASP2. Interacts (via cytoplasmic C-terminal domain) with NKD2.

Subcellular Location:

Transforming growth factor alpha: Secreted, extracellular space. Protransforming growth factor alpha: Cell membrane; Single-pass type I membrane protein.

Tissue Specificity:

Isoform 1, isoform 3 and isoform 4 are expressed in keratinocytes and tumor-derived cell lines.

Similarity:

Contains 1 EGF-like domain.

SWISS:

P01135

Gene ID:

7039

Database links:

[Entrez Gene: 403431](#) Dog

[Entrez Gene: 7039](#) Human

[Entrez Gene: 21802](#) Mouse

[Entrez Gene: 24827](#) Rat

[Omim: 190170](#) Human

[SwissProt: P01135](#) Human

[SwissProt: P48030](#) Mouse

[SwissProt: P01134](#) Rat

[Unigene: 170009](#) Human

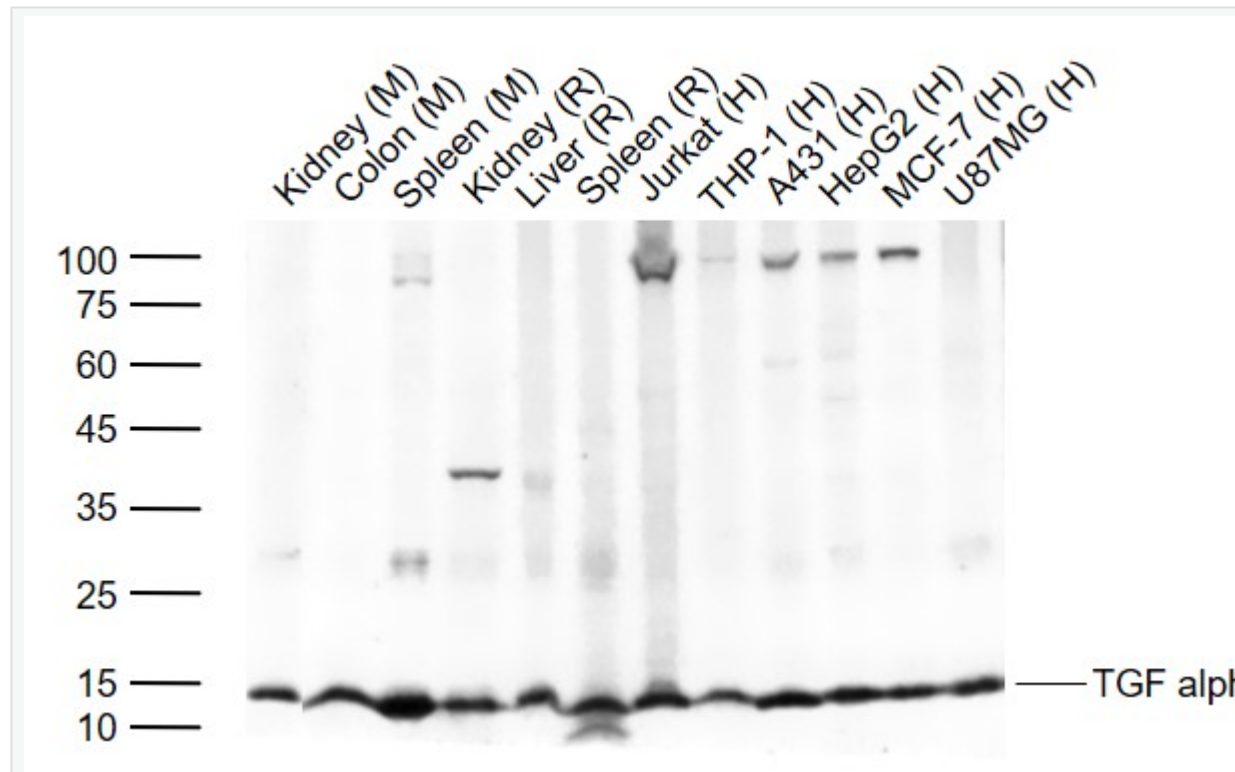
[Unigene: 137222](#) Mouse

[Unigene: 9952](#) Rat

Growth factors and hormones

TGF α 是一个强有力的只有丝分裂多肽,主要由恶性 Tumour 产生。

Product
Picture



Sample:

Lane 1: Mouse Kidney tissue lysates

Lane 2: Mouse Colon tissue lysates

Lane 3: Mouse Spleen tissue lysates

Lane 4: Rat Kidney tissue lysates

Lane 5: Rat Liver tissue lysates

Lane 6: Rat Spleen tissue lysates

Lane 7: Human Jurkat cell lysates

Lane 8: Human THP-1 cell lysates

Lane 9: Human A431 cell lysates

Lane 10: Human HepG2 cell lysates

Lane 11: Human MCF-7 cell lysates

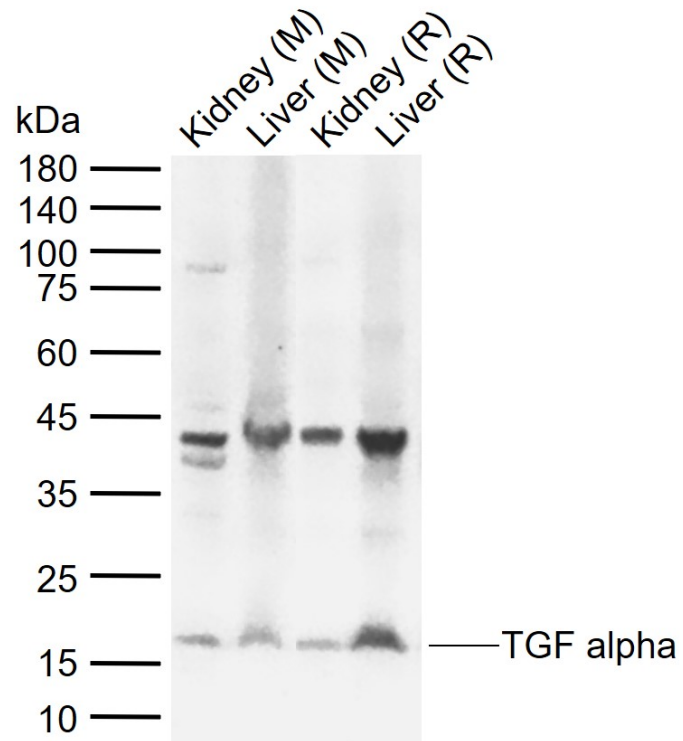
Lane 12: Human U87MG cell lysates

Primary: Anti- TGF alpha (SL0066R) at 1/1000 dilution

Secondary: IRDye800CW Goat Anti-Rabbit IgG at 1/20000 dilution

Predicted band size: 17 kDa

Observed band size: 15 kDa



Sample:

Lane 1: Mouse Kidney tissue lysates

Lane 2: Mouse Liver tissue lysates

Lane 3: Rat Kidney tissue lysates

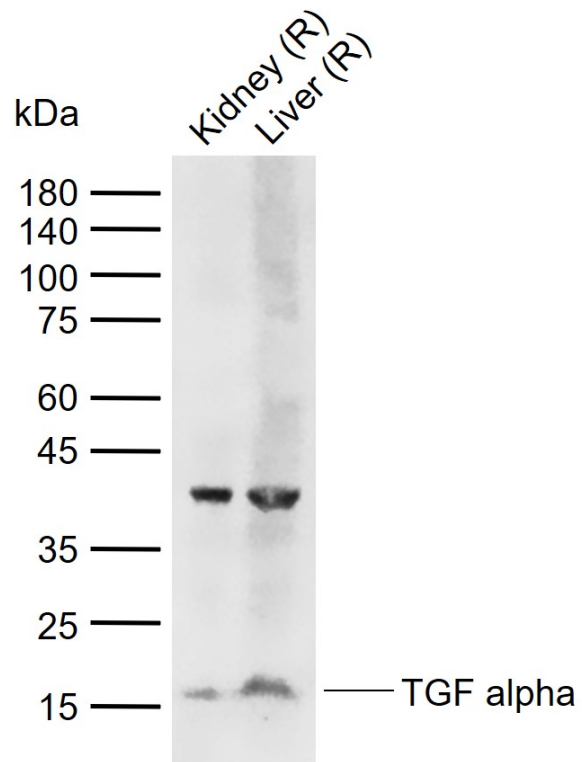
Lane 4: Rat Liver tissue lysates

Primary: Anti-TGF alpha (SL0066R) at 1/1000 dilution

Secondary: IRDye800CW Goat Anti-Rabbit IgG at 1/20000 dilution

Predicted band size: 17 kDa

Observed band size: 17 kDa



Sample:

Lane 1: Rat Kidney tissue lysates

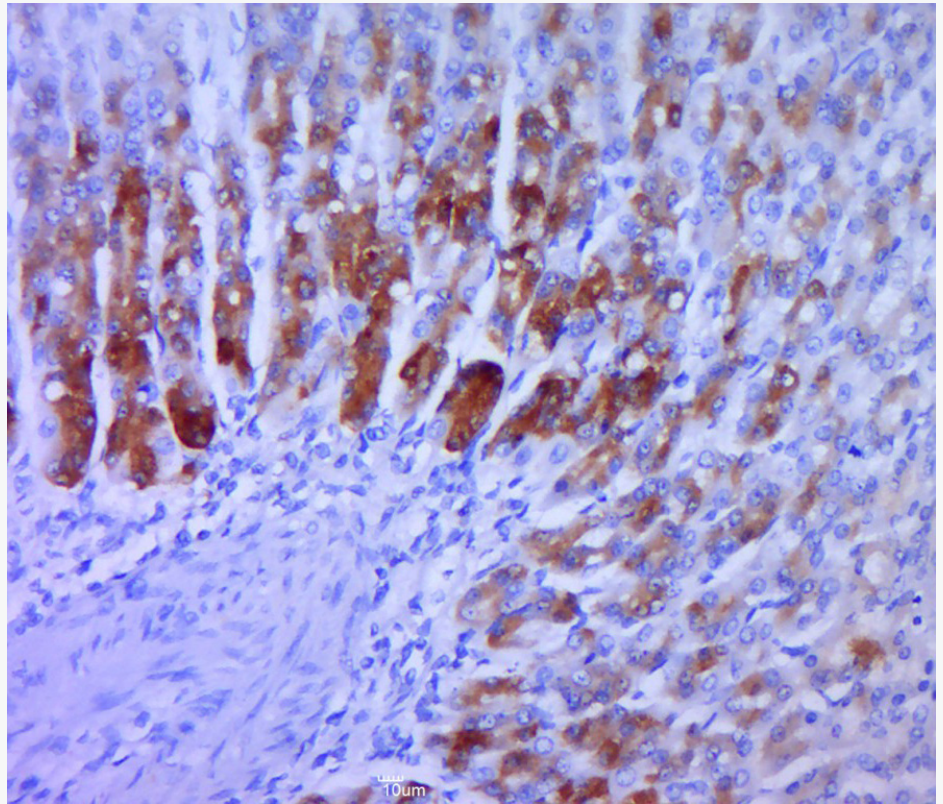
Lane 2: Rat Liver tissue lysates

Primary: Anti-TGF alpha (SL0066R) at 1/1000 dilution

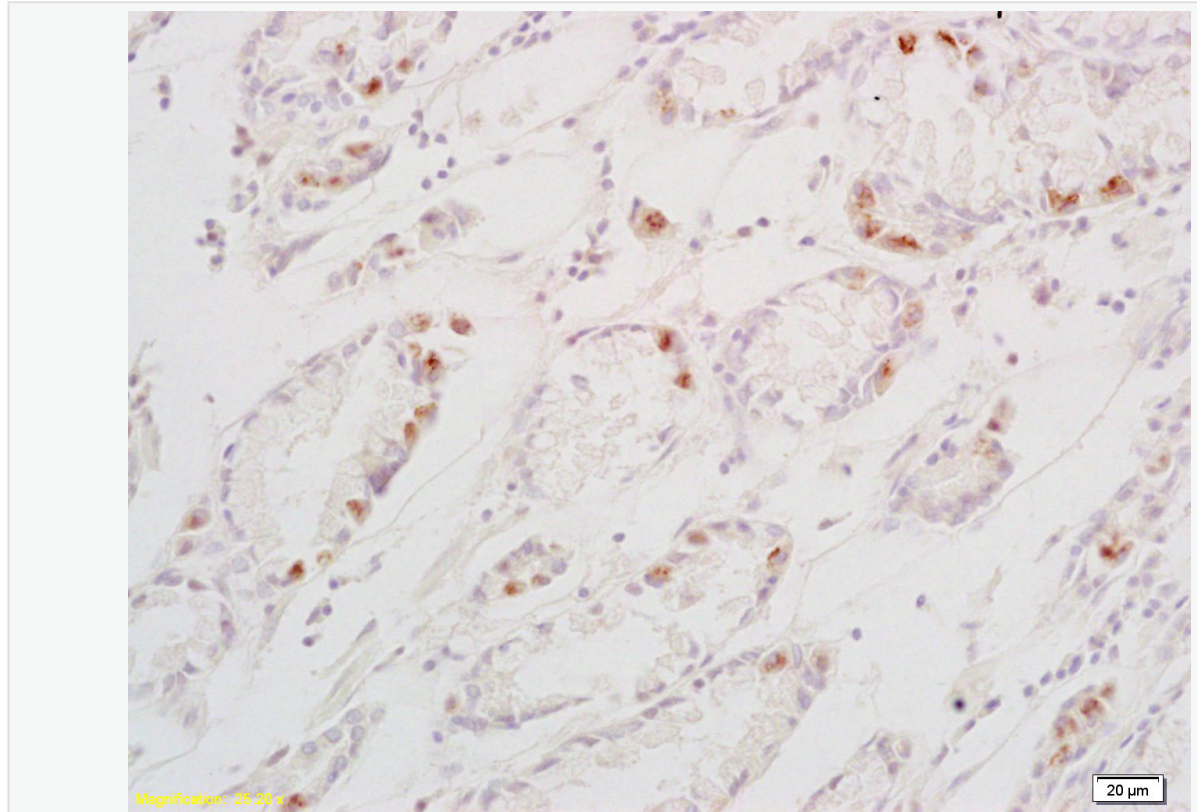
Secondary: IRDye800CW Goat Anti-Rabbit IgG at 1/20000 dilution

Predicted band size: 17 kDa

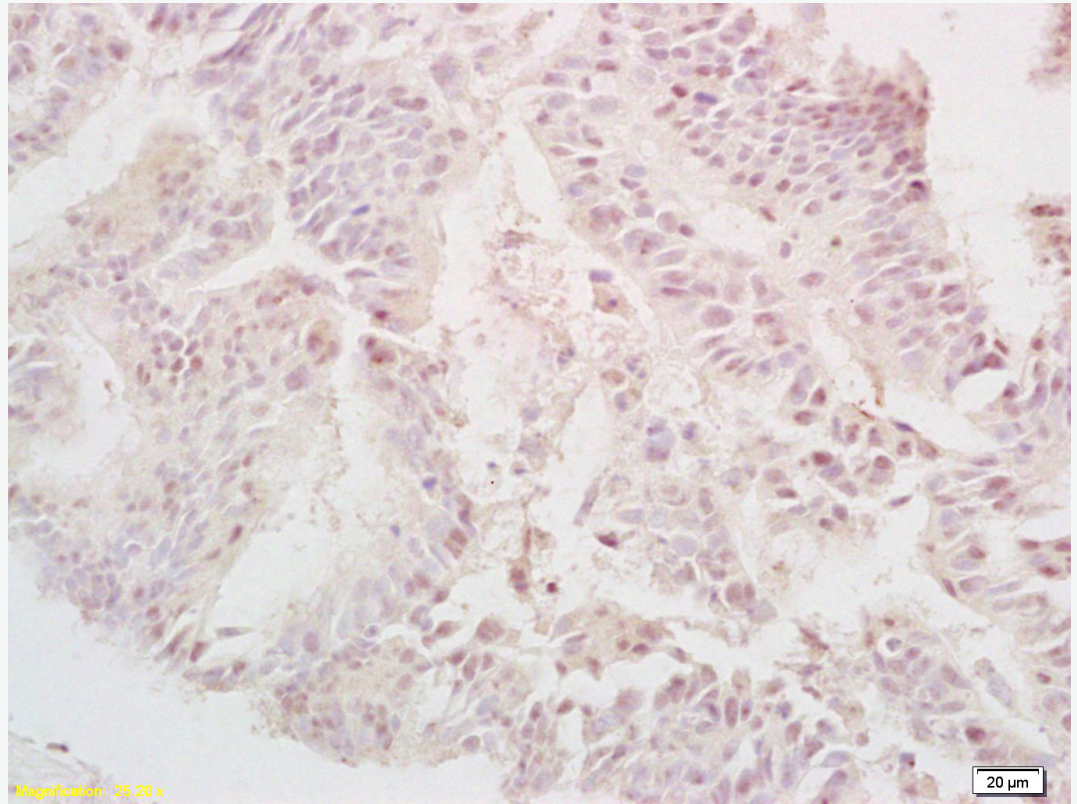
Observed band size: 17 kDa



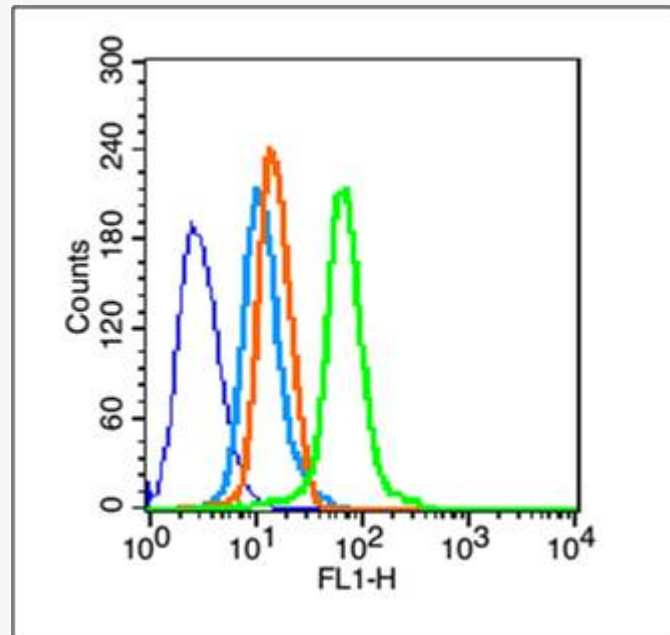
Paraformaldehyde-fixed, paraffin embedded (rat stomach tissue); Antigen retrieval by boiling in sodium citrate buffer (pH6.0) for 15min; Block endogenous peroxidase by 3% hydrogen peroxide for 20 minutes; Blocking buffer (normal goat serum) at 37°C for 30min; Antibody incubation with (TGF alpha) Polyclonal Antibody, Unconjugated (SL0066R) at 1:400 overnight at 4°C, followed by a conjugated secondary (sp-0023) for 20 minutes and DAB staining.



Tissue/cell: human gastric carcinoma; 4% Paraformaldehyde-fixed and paraffin-embedded;
Antigen retrieval: citrate buffer (1M, pH 6.0), Boiling bathing for 15min; Block endogenous peroxidase by 3% Hydrogen peroxide for 30min; Blocking buffer (normal goat serum,C-0005) 37°C for 20 min;
Incubation: Anti-TGF alpha Polyclonal Antibody, Unconjugated(SL0066R) 1:200, overnight at 4°C, followed by conjugation to the secondary antibody(SP-0023) and DAB(C-0010) staining



Tissue/cell: human colon carcinoma; 4% Paraformaldehyde-fixed and paraffin-embedded;
Antigen retrieval: citrate buffer (1M, pH 6.0), Boiling bathing for 15min; Block endogenous peroxidase by 3% Hydrogen peroxide for 30min; Blocking buffer (normal goat serum,C-0005) 37°C for 20 min;
Incubation: Anti-TGF alpha Polyclonal Antibody, Unconjugated(SL0066R) 1:200, overnight at 4°C, followed by conjugation to the secondary antibody(SP-0023) and DAB(C-0010) staining



Blank control (blue line): Hela (blue).

Primary Antibody (green line): Rabbit Anti-TGF alpha antibody (SL0066R)

Dilution: 1µg /10⁶ cells;

Isotype Control Antibody (orange line): Rabbit IgG .

Secondary Antibody (white blue line): Goat anti-rabbit IgG-FITC

Dilution: 1µg /test.

Protocol

The cells were fixed with 70% methanol (Overnight at -20°C) and then permeabilized with ice-90% methanol for 30 min on ice. Cells stained with Primary Antibody for 30 min at room temperature. The cells were then incubated in 1 X PBS/2%BSA/10% goat serum to block non-specific protein-protein interactions followed by the antibody for 15 min at room temperature. The secondary antibody used for 40 min at room temperature. Acquisition of 20,000 events w



SunLong Biotech Co.,LTD
Tel: 0086-571-56623320 Fax:0086-571-56623318
E-mail:sales@sunlongbiotech.com
www.sunlongbiotech.com

performed.