

## Rabbit Anti-Calretinin antibody

SL0062R

|                                     |   |
|-------------------------------------|---|
| <b>Product Name</b>                 | Calretinin  |
| <b>Chinese Name</b>                 | 钙 Binding protein 抗体  |
| <b>Alias</b>                        | 29 kDa calbindin; CAB 29; CAB29; CAL 2; CAL2; CALB 2; CALB2; Calbindin 2<br>29kDa; Calbindin 2; Calbindin D29K; Calbindin2; CR; CALB2_HUMAN; Calretinin.                |
| <b>Research Area</b>                | Neurobiology Binding protein  |
| <b>Immunogen Species</b>            | Rabbit  |
| <b>Clonality</b>                    | Polyclonal  |
| <b>React Species</b>                | Human,Mouse,Rat(predicted:Dog,Pig,Cow,Horse)<br>WB=1:500-2000,IHC-P=1:100-500,IHC-F=1:100-500,IF=1:100-500,Flow-Cyt=2ug/Test<br>(Paraffin sections need antigen repair) |
| <b>Applications</b>                 | not yet tested in other applications.<br>optimal dilutions/concentrations should be determined by the end user.   |
| <b>Theoretical molecular weight</b> | 29kDa   |
| <b>Cellular localization</b>        | cytoplasmic The cell membrane   |
| <b>Form</b>                         | Liquid  |
| <b>Concentration</b>                | 1mg/ml  |
| <b>immunogen</b>                    | KLH conjugated synthetic peptide derived from human Calretinin: 211-271/271   |
| <b>Lsotype</b>                      | IgG   |
| <b>Purification</b>                 | affinity purified by Protein A  |
| <b>Buffer Solution</b>              | Human,Mouse,Rat(predicted:Dog,Pig,Cow,Horse)1M TBS(pH7.4) with 1% BSA,<br>Human,Mouse,Rat(predicted:Dog,Pig,Cow,Horse)3% Proclin300 and 50% Glycerol.                   |
| <b>Storage</b>                      | Shipped at 4°C. Store at -20 °C for one year. Avoid repeated freeze/thaw cycles.  |
| <b>Attention</b>                    | This product as supplied is intended for research use only, not for use in human, therapeutic or diagnostic applications.   |
| <b>PubMed</b>                       | <a href="#">PubMed</a>  |
| <b>Product</b>                      | Calretinin is a calcium-binding protein which is abundant in auditory neurons. It belongs   |

**Detail**

to the calbindin family. Calbindin 2 (calretinin), closely related to calbindin 1, is an intracellular calcium-binding protein belonging to the troponin C superfamily. Calbindin 1 is known to be involved in the vitamin-D-dependent calcium absorption through intestinal and renal epithelia, while the function of neuronal calbindin 1 and calbindin2 is poorly understood. The sequence of the calbindin 2 cDNA reveals an open reading frame of 271 codons coding for a protein of 31,520 Da, and shares 58% identical residues with human calbindin1.

**Function:**

Calretinin is a calcium-binding protein which is abundant in auditory neurons.

**Tissue Specificity:**

Brain.

**Similarity:**

Belongs to the calbindin family.

Contains 6 EF-hand domains.

**SWISS:**

P22676

**Gene ID:**

794

**Database links:**

[Entrez Gene: 396255](#) Chicken

[Entrez Gene: 794](#) Human

[Entrez Gene: 12308](#) Mouse

[Entrez Gene: 117059](#) Rat

[Entrez Gene: 393684](#) Zebrafish

[Omim: 114051](#) Human

[SwissProt: P07090](#) Chicken

[SwissProt: P22676](#) Human

[SwissProt: Q08331](#) Mouse

[SwissProt: P47728](#) Rat

[Unigene: 106857](#) Human

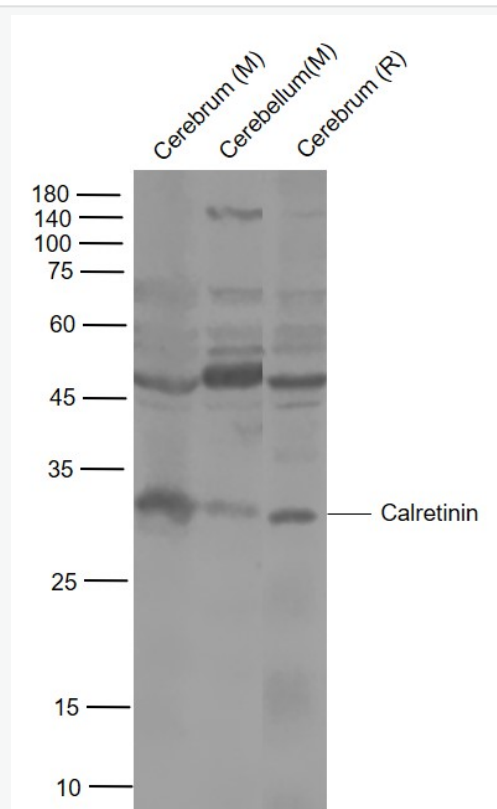
[Unigene: 2755](#) Mouse

[Unigene: 10321](#) Rat

钙 Binding protein(Calretinin,CR)主要存在于神经组织中,近 10%的腺癌可以表达此蛋白的局部染色阳性,而绝大多数的间皮瘤为阳性表达,因此它是诊断间皮瘤的一个有用的标记物。

钙 Binding protein 是平滑肌和非肌性调控蛋白。它可以与肌动蛋白、肌球蛋白、原肌球蛋白和钙调素相互作用。

**Product  
Picture**



Sample:

Lane 1: Mouse Cerebrum Lysates

Lane 2: Mouse Cerebellum Lysates

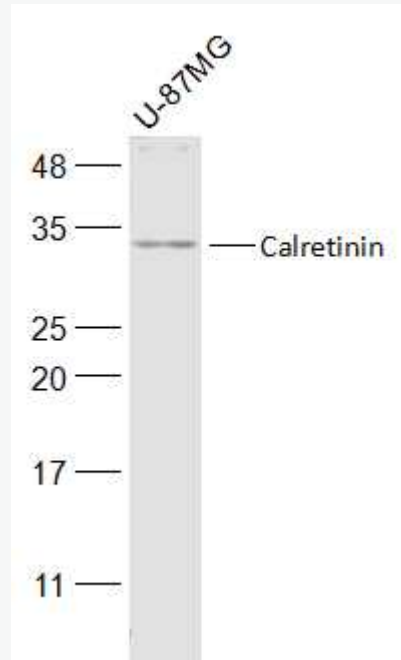
Lane 3: Rat Cerebrum Lysates

Primary: Anti- Calretinin (SL0062R) at 1/1000 dilution

Secondary: IRDye800CW Goat Anti-Rabbit IgG at 1/20000 dilution

Predicted band size: 29 kDa

Observed band size: 29 kDa



Sample:

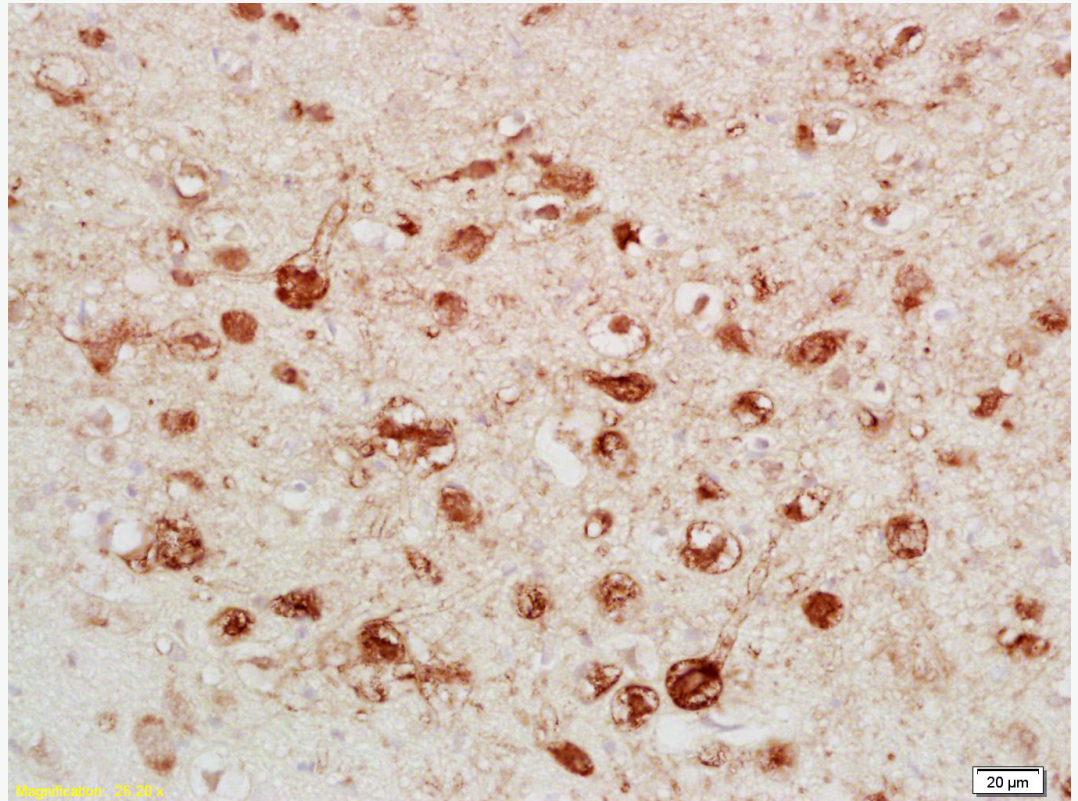
U-87MG(Human) Cell Lysate at 30 ug

Primary: Anti-Calretinin (SL0062R) at 1/500 dilution

Secondary: IRDye800CW Goat Anti-Rabbit IgG at 1/20000 dilution

Predicted band size: 29 kD

Observed band size: 29 kD



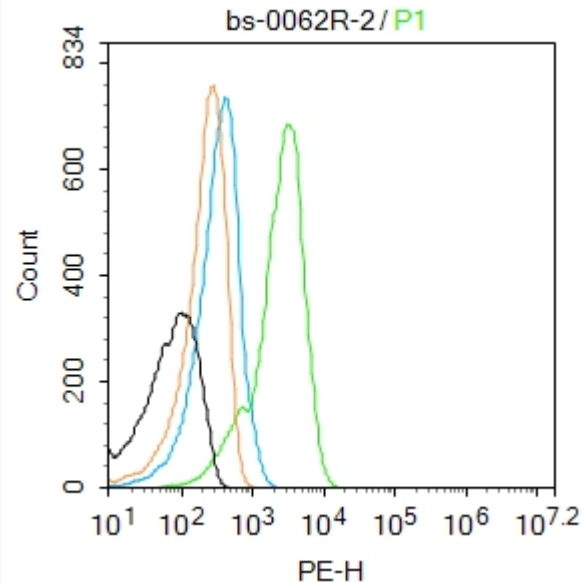
Tissue/cell: rat brain tissue; 4% Paraformaldehyde-fixed and paraffin-embedded;

Antigen retrieval: citrate buffer

( Human,Mouse,Rat(predicted:Dog,Pig,Cow,Horse)1M, pH 6.0 ), Boiling bathing for 15min; Block endogenous peroxidase by 3% Hydrogen peroxide for 30min; Blocking buffer (normal goat serum,C-0005) at 37°C for 20 min;

Incubation: Anti-Calretinin/CA Polyclonal Antibody, Unconjugated(SL0062R)

1:200, overnight at 4°C, followed by conjugation to the secondary antibody(SP-0023) and DAB(C-0010) staining



Blank control:A431.

Primary Antibody (green line): Rabbit Anti-S100A13 antibody (SL2617R)

Dilution: 2 $\mu$ g /10<sup>6</sup> cells;

Isotype Control Antibody (orange line): Rabbit IgG .

Secondary Antibody : Goat anti-rabbit IgG-AF488

Dilution: 1 $\mu$ g /test.

#### Protocol

The cells were fixed with 4% PFA (10min at room temperature)and then permeabilized with 0.1% PBST for 20 min at room temperature.The cells were then incubated in 5%BSA to block non-specific protein-protein interactions for 30 min at room temperature .Cells stained with Primary Antibody for 30 min at room temperature. The secondary antibody used for 40 min at room temperature.



SunLong Biotech Co.,LTD  
Tel: 0086-571-56623320 Fax:0086-571-56623318  
E-mail:sales@sunlongbiotech.com  
www.sunlongbiotech.com

Acquisition of 20,000 events was performed.