

## Rabbit Anti-Melan A antibody

SL0051R

**Product Name** Melan A

**Chinese Name** 黑色素瘤相关抗原/黑色素-A 抗体

**Alias** MAR1\_HUMAN; Melanoma antigen recognized by T-cells 1; MLANA; MART1; Antigen LB39-AA; Antigen SK29-AA; Protein Melan-A;

**Research Area** Tumour Cell biology immunology TumourCell biologyMaker

**Immunogen Species** Rabbit

**Clonality** Polyclonal

**React Species** Human,  
IHC-P=1:100-500,IHC-F=1:100-500,IF=1:100-500 (Paraffin sections need antigen repair)  
**Applications** not yet tested in other applications.  
optimal dilutions/concentrations should be determined by the end user.

**Theoretical molecular weight** 13kDa

**Cellular localization** cytoplasmic The cell membrane

**Form** Liquid

**Concentration** 1mg/ml

**immunogen** KLH conjugated synthetic peptide derived from human Melan-A: 51-118/118

**Lsotype** IgG

**Purification** affinity purified by Protein A

**Buffer Solution** 1M TBS(pH7.4) with 1% BSA, 3% Proclin300 and 50% Glycerol.

**Storage** Shipped at 4°C. Store at -20 °C for one year. Avoid repeated freeze/thaw cycles.

**Attention** This product as supplied is intended for research use only, not for use in human, therapeutic or diagnostic applications.

**PubMed** [PubMed](#)

**Product** Melan A, a product of the MART-1 gene, is a melanocyte differentiation marker recognized

---

**Detail**

by autologous cytotoxic T lymphocytes. Other melanoma-associated markers recognized by autologous cytotoxic T cells are reported to include MAGE-1, MAGE-3, tyrosinase, gp100, gp75, BAGE-1 and GAGE-1. The analysis of these different molecules and their expression in individual melanomas may be of help in the study of their particular molecular roles in melanocyte differentiation and tumorigenesis.

**Function:**

Involved in melanosome biogenesis by ensuring the stability of GPR143. Plays a vital role in the expression, stability, trafficking, and processing of melanocyte protein PMEL, which is critical to the formation of stage II melanosomes.

**Subunit:**

Interacts with PMEL. Interacts with GPR143.

**Subcellular Location:**

Endoplasmic reticulum membrane; Single-pass type III membrane protein. Golgi apparatus. Golgi apparatus, trans-Golgi network membrane. Melanosome. Note=Also found in small vesicles and tubules dispersed over the entire cytoplasm. A small fraction of the protein is inserted into the membrane in an inverted orientation. Inversion of membrane topology results in the relocalization of the protein from a predominant Golgi/post-Golgi area to the endoplasmic reticulum. Melanoma cells expressing the protein with an inverted membrane topology are more effectively recognized by specific cytolytic T-lymphocytes than those expressing the protein in its native membrane orientation.

**Tissue Specificity:**

Expression is restricted to melanoma and melanocyte cell lines and retina.

**Post-translational modifications:**

Acylated.

**SWISS:**

Q16655

**Gene ID:**

2315

**Database links:**

[Entrez Gene: 2315](#) Human

[Omim: 605513](#) Human

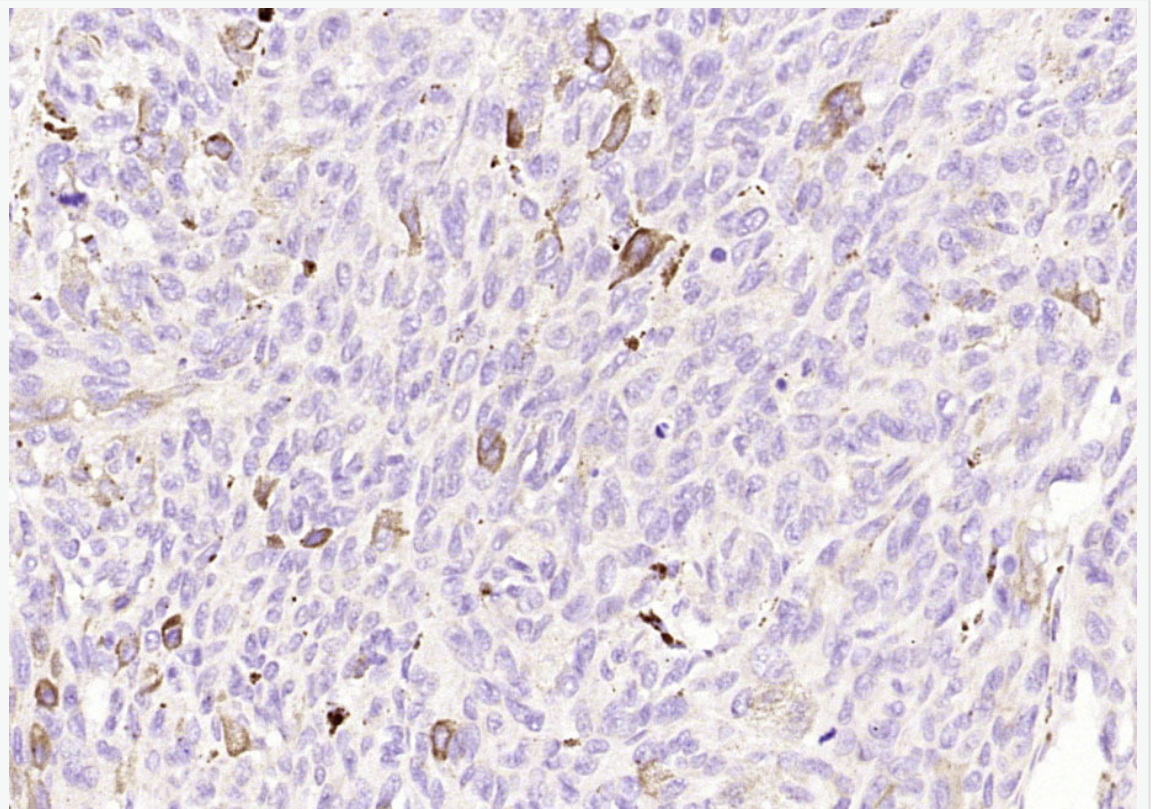
[SwissProt: Q16655](#) Human

[Unigene: 154069](#) Human

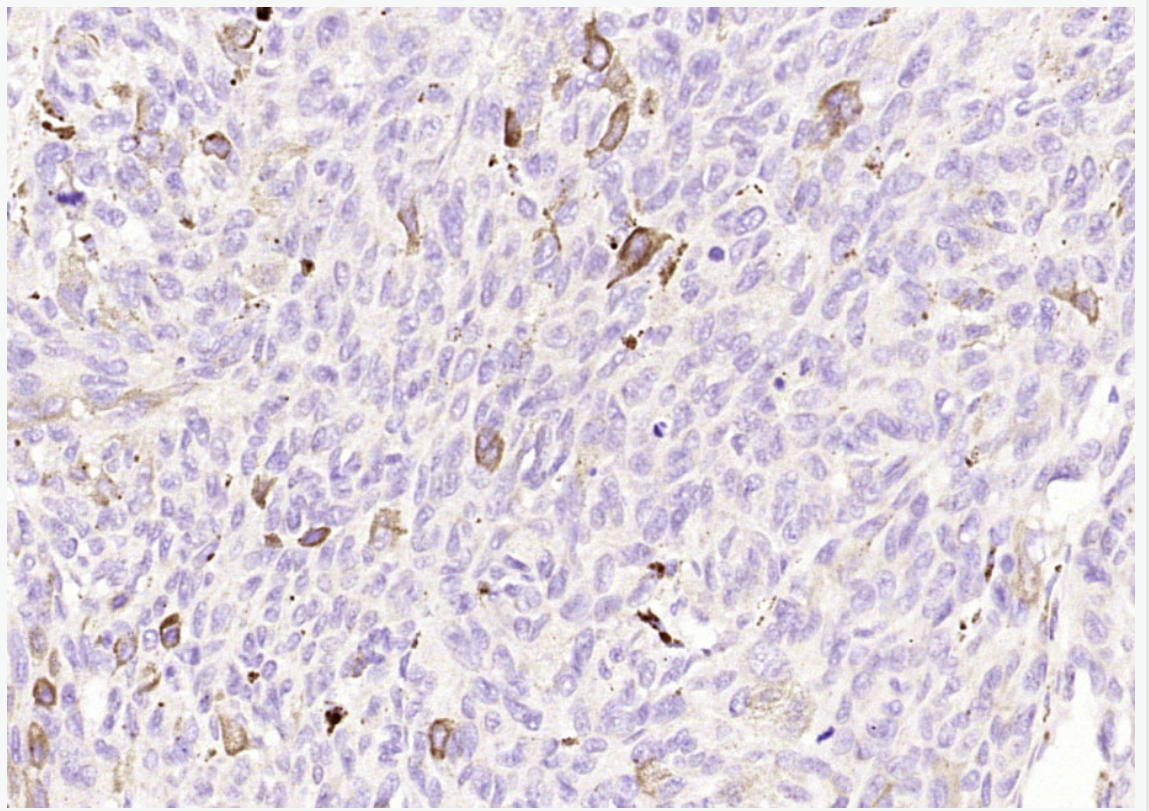
信号中间体 (Signaling Intermediates)

MelanA/MART-1 是分化 Tumour 抗原类别中具有代表性的成员，它表达于正常的黑色素细胞和大多数原发及转移的黑色素瘤中，故称：黑色素瘤相关抗原。

**Product  
Picture**



Paraformaldehyde-fixed, paraffin embedded (Human melanoma); Antigen retrieval by boiling in sodium citrate buffer (pH6.0) for 15min; Block endogenous peroxidase by 3% hydrogen peroxide for 20 minutes; Blocking buffer (normal goat serum) at 37°C for 30min; Antibody incubation with (Melan) Polyclonal Antibody, Unconjugated (SL0051R) at 1:200 overnight at 4°C, followed by operating according to SP Kit(Rabbit) (sp-0023) instructions and DAB staining.



Paraformaldehyde-fixed, paraffin embedded (Human melanoma); Antigen retrieval by boiling in sodium citrate buffer (pH6.0) for 15min; Block endogenous peroxidase by 3% hydrogen peroxide for 20 minutes; Blocking buffer (normal goat serum) at 37°C for 30min; Antibody incubation with (Melan) Polyclonal Antibody, Unconjugated (SL0051R) at 1:200 overnight at 4°C, followed by operating according to SP Kit(Rabbit) (sp-0023) instructions and DAB staining.