

Mouse Anti-PPP3CA antibody

SL0030M

Product Name	PPP3CA
Chinese Name	钙调磷酸酶 A/钙依赖磷酸酶 A 抗体
Alias	Calcineurin A alpha; CalcineurinA; Calcineurin-A; Calcineurin A; Calmodulin dependent calcineurin A subunit alpha isoform; CALN; CALNA 1; CALNA; CALNA1; CAM PRP catalytic subunit; CCN 1; CCN1; CNA 1; CNA; CNA1; PPP2B; Protein phosphatase 3 (formerly 2B) catalytic subunit alpha isoform; Serine/threonine protein phosphatase 2B catalytic subunit alpha isoform; PP2BA_HUMAN; CAM-PRP catalytic subunit; Calmodulin-dependent calcineurin A subunit alpha isoform; protein phosphatase 2B, catalytic subunit, alpha isoform; serine/threonine-protein phosphatase 2B catalytic subunit alpha isoform.
Research Area	Cell biology immunology Neurobiology Signal transduction Kinases and Phosphatases
Immunogen Species	Mouse
Clonality	Polyclonal
React Species	Human(predicted:Mouse,Rat,Dog,Pig,Cow,Horse,Rabbit) Flow-Cyt=2ug/Test (Paraffin sections need antigen repair)
Applications	not yet tested in other applications. optimal dilutions/concentrations should be determined by the end user.
Theoretical molecular weight	57kDa
Cellular localization	The nucleus
Form	Liquid
Concentration	1mg/ml
immunogen	KLH conjugated synthetic peptide derived from human PPP3CA: 15-80/521
Lsotype	IgG
Purification	affinity purified by Protein A
Buffer Solution	Human(predicted:Mouse,Rat,Dog,Pig,Cow,Horse,Rabbit)1M TBS(pH7.4) with 1% BSA, Human(predicted:Mouse,Rat,Dog,Pig,Cow,Horse,Rabbit)3% Proclin300 and 50% Glycerol.

Storage

Shipped at 4°C. Store at -20 °C for one year. Avoid repeated freeze/thaw cycles.

Attention

This product as supplied is intended for research use only, not for use in human, therapeutic or diagnostic applications.

PubMed

[PubMed](#)

Calcineurin, a major soluble calmodulin binding protein in the brain, a Ca²⁺/calmodulin dependent serine/threonine protein phosphatase, with a relatively narrow substrate specificity. This metalloenzyme, also known as phosphatase 2B, is a heterodimer composed of a calmodulin binding, catalytic alpha subunit 61 kDa, calcineurin A) and calcium binding beta subunit (18 kDa, calcineurin B). The Ca²⁺ binding subunit, calcineurin B, is immunologically conserved from yeast to mammals. The presence of 2 different calcineurin B isoforms (beta 1 and beta 2) has been reported in rat testis. The catalytic subunit of calcineurin, calcineurin A, isolated from different tissues or different organisms, exhibits some immunological heterogeneity. Further, there are at least 2 isoforms of calcineurin A in bovine brain (alpha 1 and alpha 2, 61 and 59 kDa, respectively).

Function:

Calcium-dependent, calmodulin-stimulated protein phosphatase. This subunit may have a role in the calmodulin activation of calcineurin. Dephosphorylates DNMI1, HSPB1 and SSH1.

Product Detail

Subunit:

Interacts with CHP1 and CHP2. Composed of two components (A and B), the A component is the catalytic subunit and the B component confers calcium sensitivity. Interacts with CRTC2, MYOZ1, MYOZ2 and MYOZ3. Interacts with DNMI1; the interaction dephosphorylates DNMI1 and regulates its translocation to mitochondria. Interacts with CMYA5; this interaction represses calcineurin activity in muscle.

Subcellular Location:

Nucleus. Note=Colocalizes with ACTN1 and MYOZ2 at the Z line in heart and skeletal muscle.

Similarity:

Belongs to the PPP phosphatase family. PP-2B subfamily.

SWISS:

Q08209

Gene ID:

5530

Database links:

[Entrez Gene: 5530](#) Human

[Entrez Gene: 19055](#) Mouse

[Entrez Gene: 24674](#) Rat

[Omim: 114105](#) Human

[SwissProt: Q08209](#) Human

[SwissProt: P63328](#) Mouse

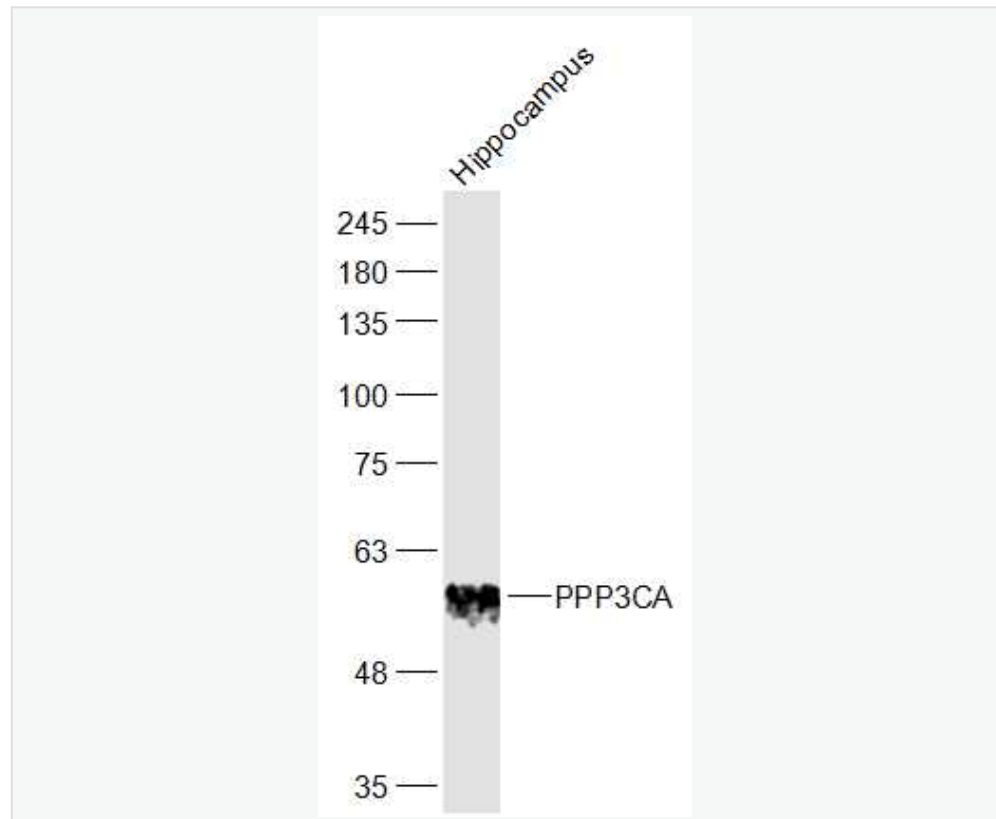
[SwissProt: P63329](#) Rat

[Unigene: 435512](#) Human

[Unigene: 331389](#) Mouse

[Unigene: 6866](#) Rat

Product Picture



Sample:

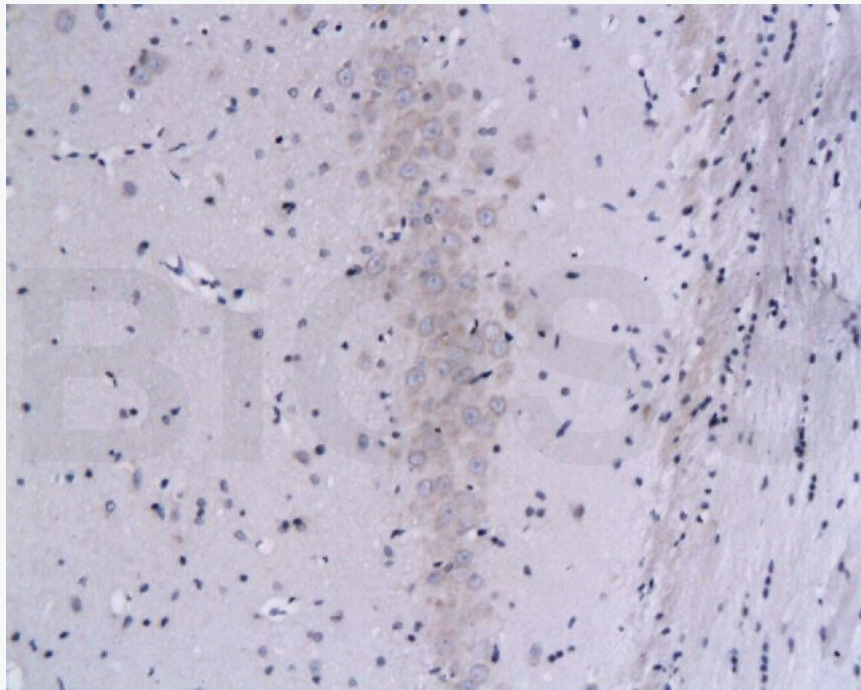
Hippocampus (Mouse) Lysate at 40 ug

Primary: Anti-PPP3CA (SL0030M) at 1/1000 dilution

Secondary: IRDye800CW Goat Anti-Mouse IgG at 1/20000 dilution

Predicted band size: 57 kD

Observed band size: 57 kD



bs-0030M Anti-Calcineurin alpha

Formalin-fixed and paraffin-embedded rat brain tissue labeled with Mouse Anti- Calcineurin alpha Polyclonal Antibody, Unconjugated(bs-0030M) at 1:200 followed by conjugation to the secondary antibody and DAB staining



SunLong Biotech Co.,LTD
Tel: 0086-571-56623320 Fax:0086-571-56623318
E-mail:sales@sunlongbiotech.com
www.sunlongbiotech.com

