



SunLong Biotech Co.,LTD
Tel: 0086-571- 56623320 Fax:0086-571- 56623318
E-mail:sales@sunlongbiotech.com
www.sunlongbiotech.com

[KD-Validated] Anti-Peptidylprolyl isomerase B Rabbit Monoclonal Antibody

Cat No.: KD-10959

Aliases:

PPIB; Peptidylprolyl Isomerase B; CYP-S1; SCYLP; CYPB; Peptidyl-Prolyl Cis-Trans Isomerase B; S-Cyclophilin; Rotamase B; OI9; Cyclophilin B; EC 5.2.1.8; PPIase B; B; Peptidylprolyl Isomerase B (Cyclophilin B); Epididymis Secretory Protein Li 39; Cyclophilin-Like Protein; HEL-S-39; PPIase; PPIASE

Background:

UniProt Entry: [P23284](#);NCBI Gene Entry: [5479](#)

Application Information

Molecular Weight: Predicted, 24 kDa, observed, 18 kDa Clonality: Rabbit monoclonal antibody Clone ID: 23GB1930 Species Reactivity: Human, Mouse, Rat Applications Tested: Western Blotting (WB), Flow Cytometry (FCM)

Immunogen

A synthesized peptide derived from human Cyclophilin B

Isotype

Rabbit IgG

Storage Buffer

Supplied in PBS (pH 7.4) containing 50% glycerol, and 0.02% sodium azide.

Storage

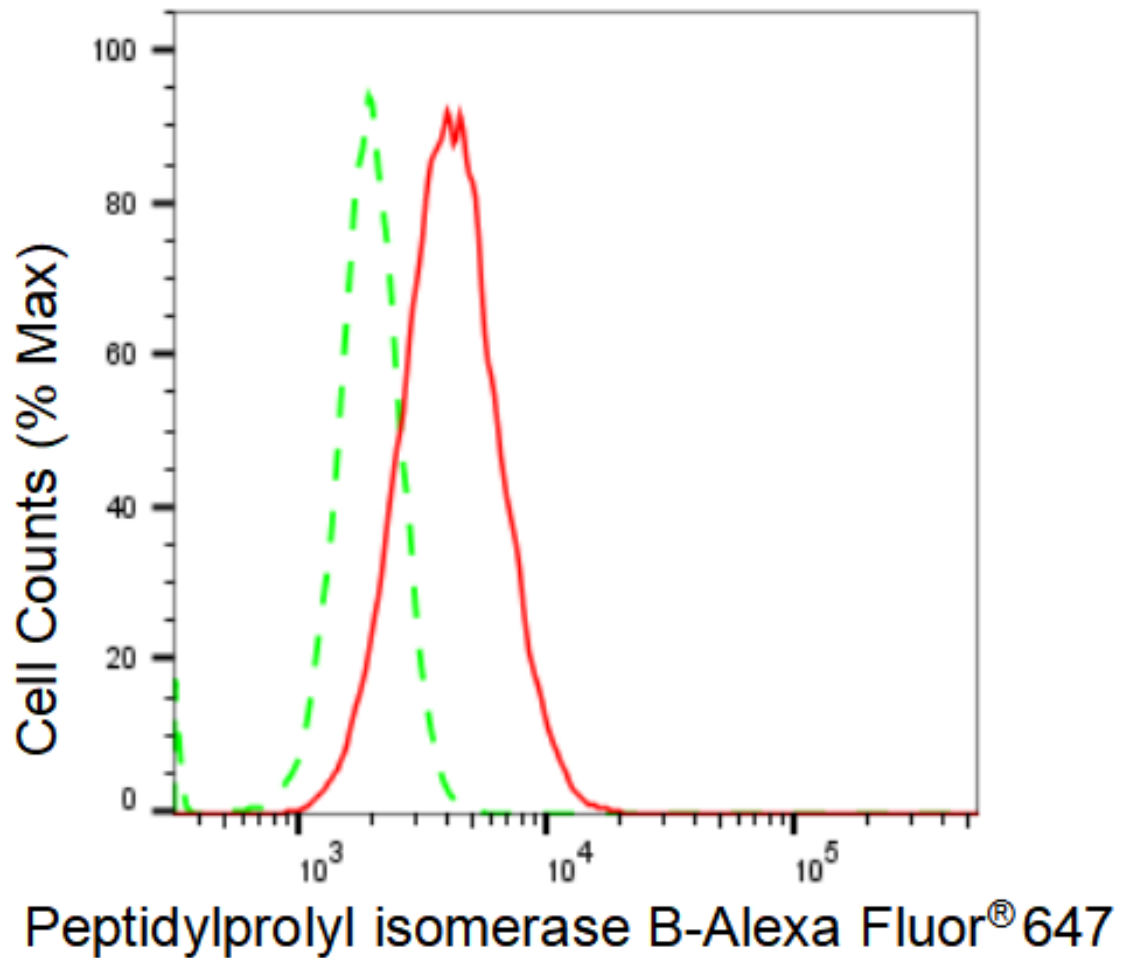
Store at -20 °C for one year.

Recommended Dilutions

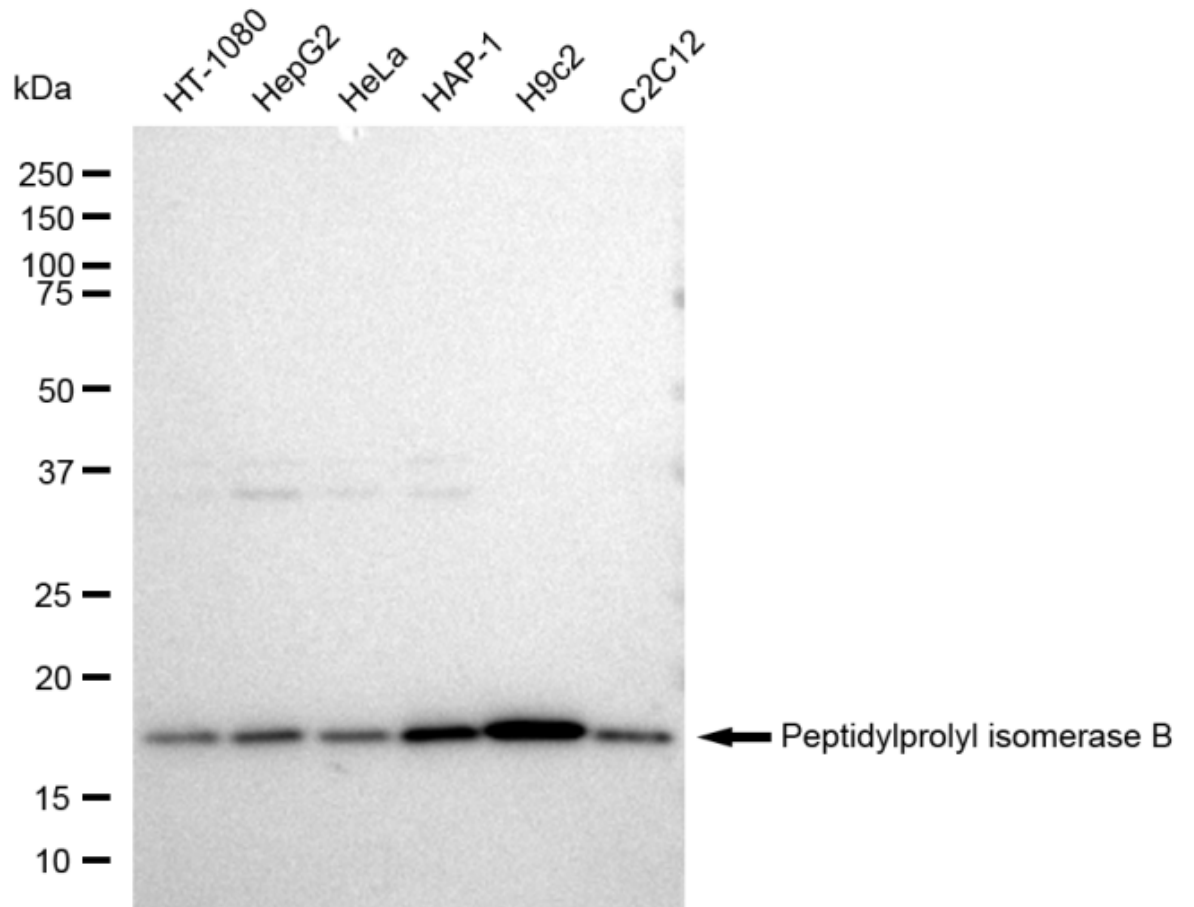
Western Blotting (WB): 1:1,000-1:5,000 Flow Cytometry (FCM): 1:2,000

Protocols

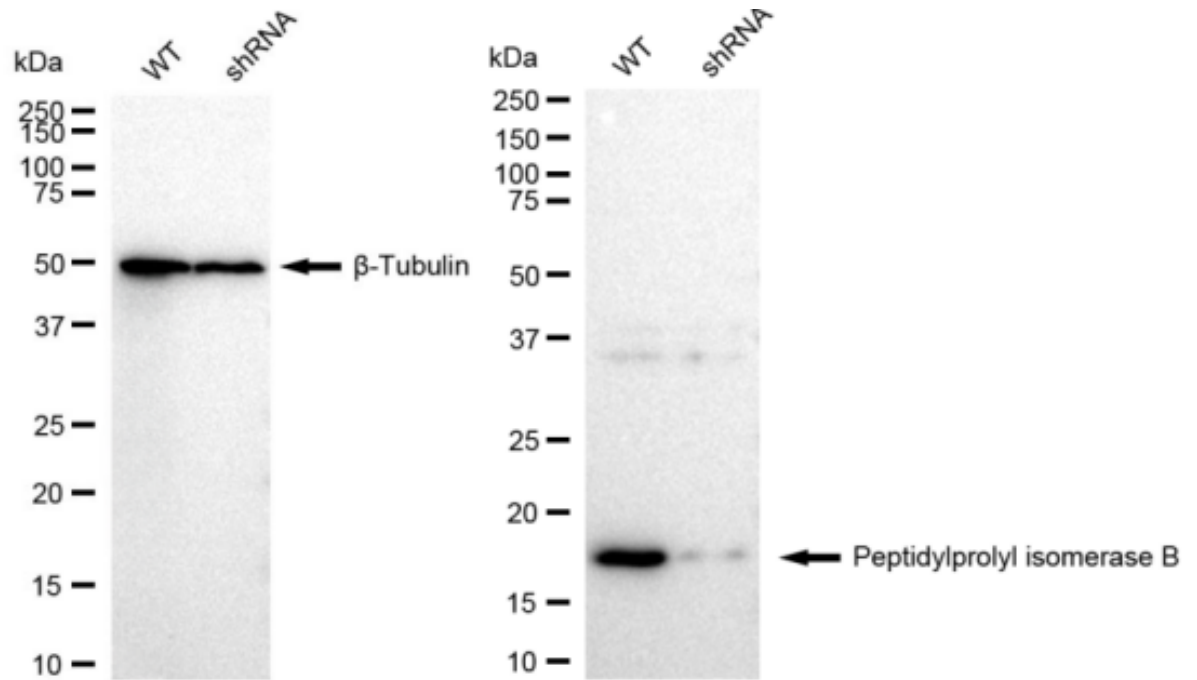
For general and specific antibody protocols please visit our website. Read all instructions before using this product.



Flow cytometric analysis of Peptidylprolyl isomerase B expression in H9c2 cells using Peptidylprolyl isomerase B antibody 1:2,000. Green, isotype control; red, Peptidylprolyl isomerase B.



Western blotting analysis using anti-Peptidylprolyl isomerase B antibody 1:5,000 and HRP-conjugated goat anti-rabbit secondary antibody 1:20,000 respectively. Image was developed using FeQ™ ECL Substrate Kit .



Western blotting analysis using anti-Peptidylprolyl isomerase B antibody 1:5,000 and HRP-conjugated goat anti-rabbit secondary antibody 1:20,000 respectively. Image was developed using FeQ™ ECL Substrate Kit .