



SunLong Biotech Co.,LTD  
Tel: 0086-571- 56623320 Fax:0086-571- 56623318  
E-mail:sales@sunlongbiotech.com  
www.sunlongbiotech.com

## **[KD-Validated] Anti-Hsp60 Rabbit Monoclonal Antibody**

Cat No.: KD-10955

### **Aliases:**

HSPD1; Heat Shock Protein Family D (Hsp60) Member 1; HSP60; 60 KDa Heat Shock Protein, Mitochondrial; Heat Shock 60kDa Protein 1 (Chaperonin); Mitochondrial Matrix Protein P1; P60 Lymphocyte Protein; 60 KDa Chaperonin; Chaperonin 60; HuCHA60; HSP-60; CPN60; GROEL; SPG13; Spastic Paraplegia 13 (Autosomal Dominant); Epididymis Secretory Sperm Binding Protein; Heat Shock 60kD Protein 1 (Chaperonin); Short Heat Shock Protein 60 Hsp60s1; Heat Shock Protein 65; Heat Shock Protein 60; EC 5.6.1.7; GroEL; HSP65; Hsp60; HLD4

### **Background:**

UniProt Entry: [P10809](#);NCBI Gene Entry: [3329](#)

### **Application Information**

Molecular Weight: Predicted, 61 kDa, observed, 60 kDa Clonality: Rabbit monoclonal antibody Clone ID: 23GB2680 Species Reactivity: Human, Mouse, Rat Applications Tested: Western Blotting (WB), Flow Cytometry (FCM), Immunocytochemistry (IC)

### **Immunogen**

A synthesized peptide derived from human Hsc60

### **Isotype**

Rabbit IgG

### Storage Buffer

Supplied in PBS (pH 7.4) containing 50% glycerol, and 0.02% sodium azide.

### Storage

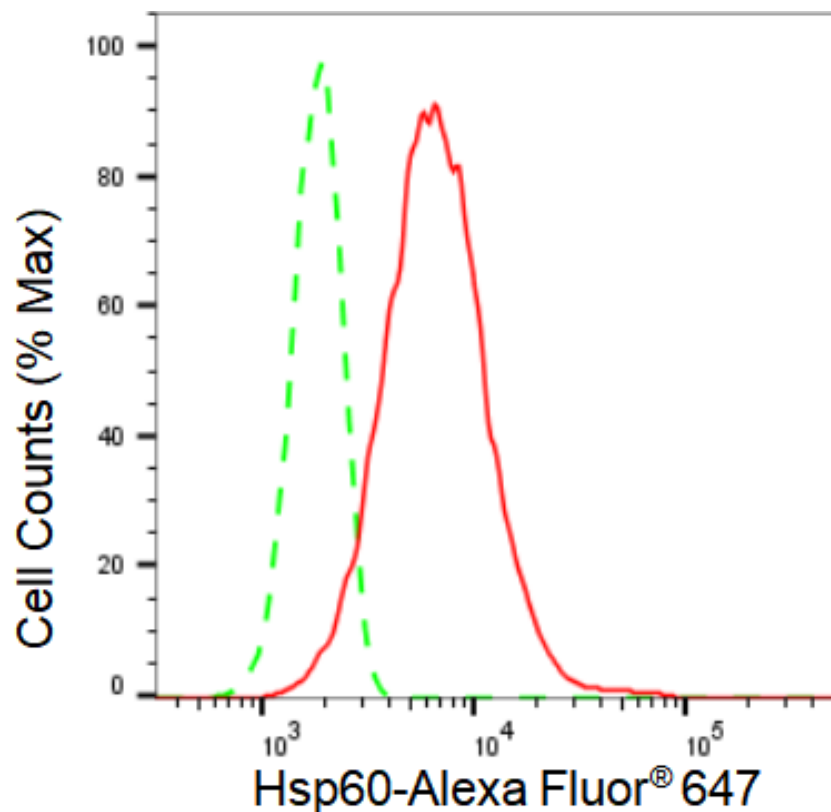
Store at -20 °C for one year.

### Recommended Dilutions

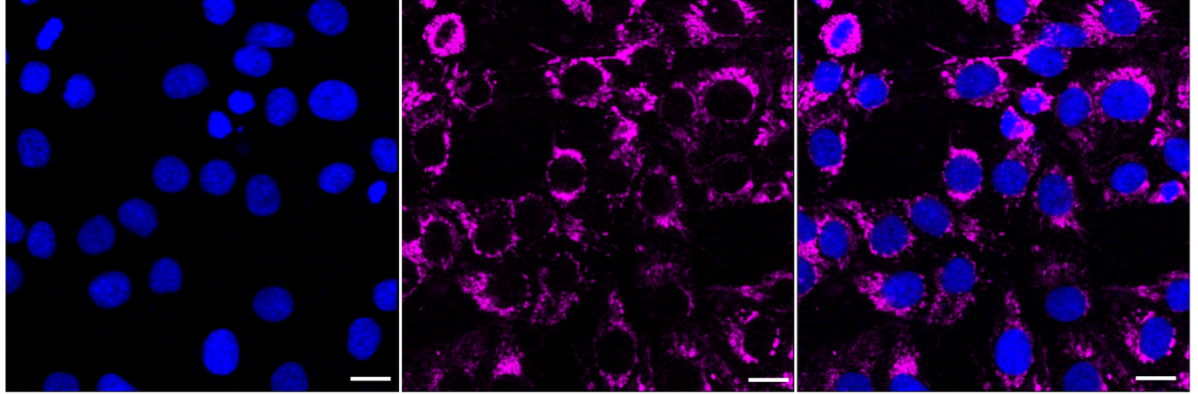
Western Blotting (WB): 1:1,000-1:5,000 Flow Cytometry (FCM): 1:2,000  
Immunocytochemistry (IC): 1:1,000

### Protocols

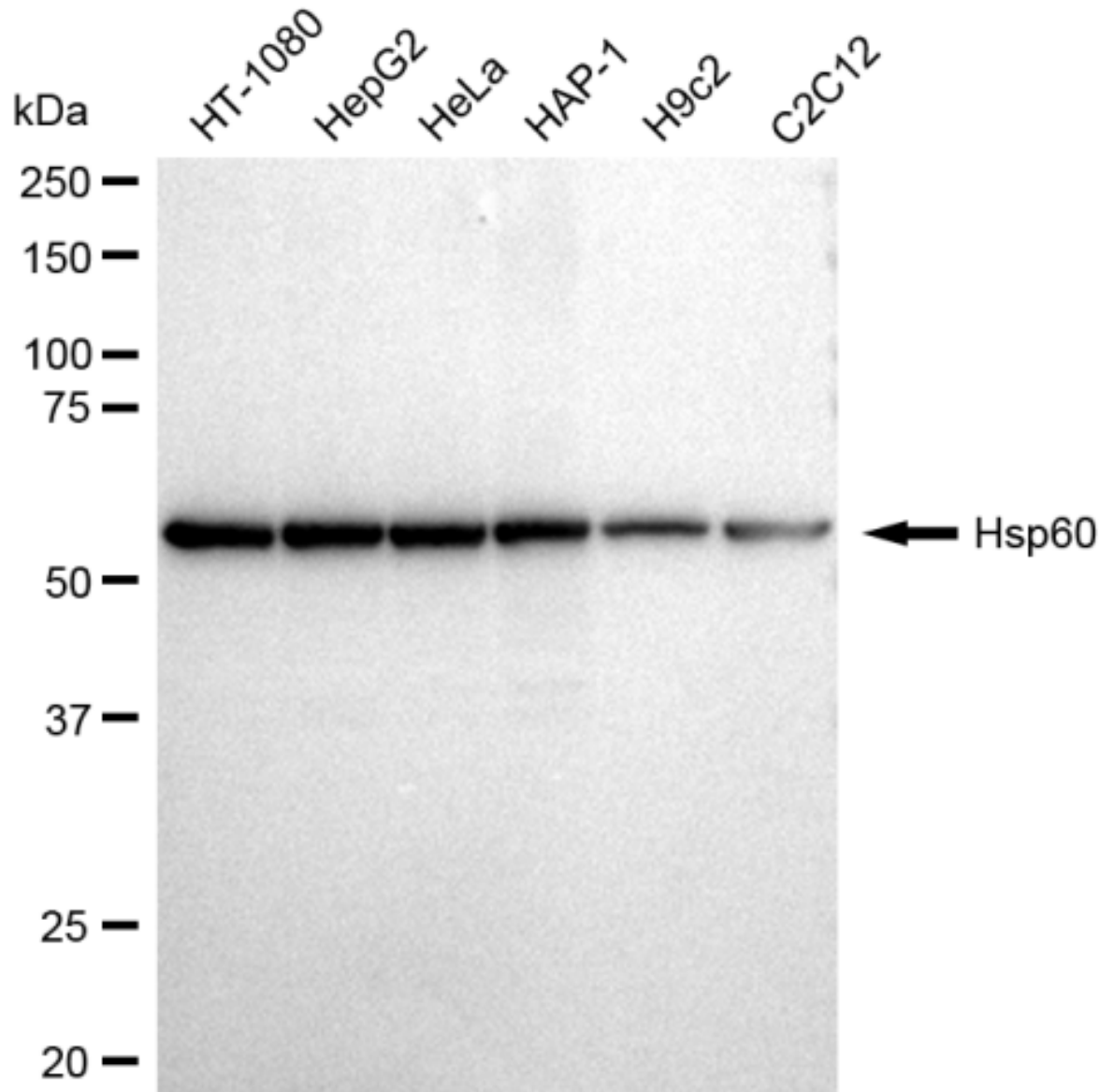
For general and specific antibody protocols please visit our website. Read all instructions before using this product.



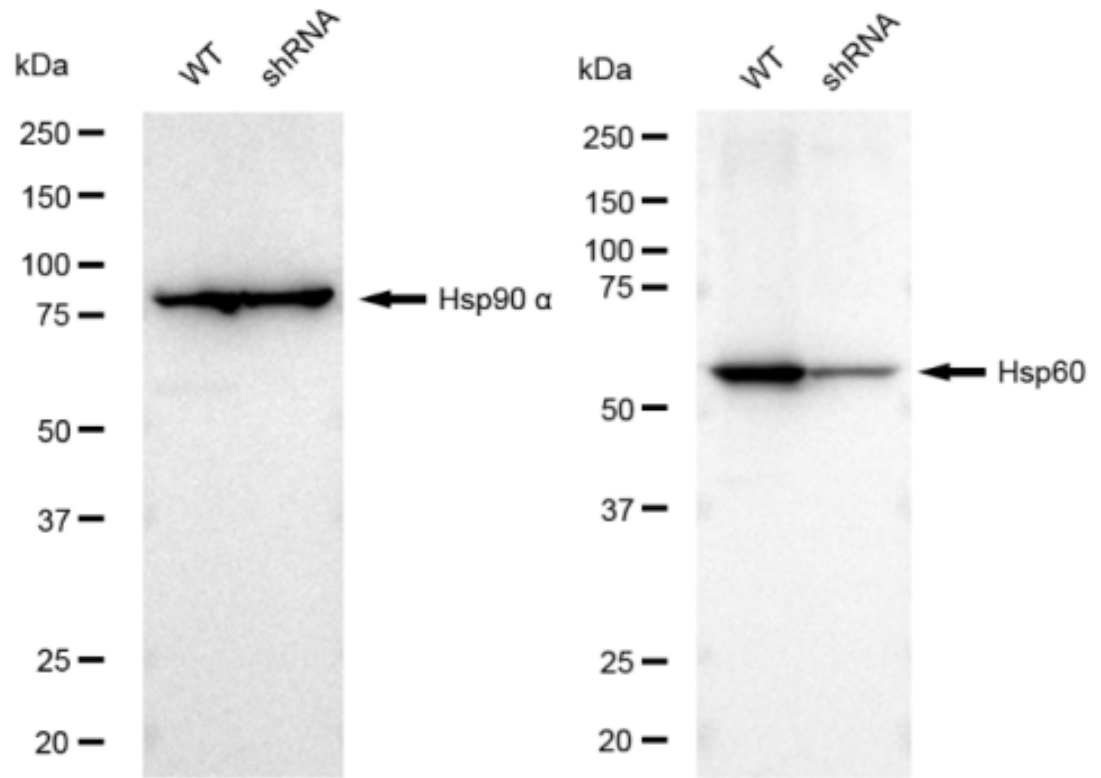
Flow cytometric analysis of Hsp60 expression in HT-1080 cells using Hsp60 antibody 1:2,000. Green, isotype control; red, Hsp60.



Immunocytochemical staining of HT-1080 cells with Hsp60 antibody 1:1,000. Nuclei were stained blue with DAPI; Hsp60 was stained magenta with Alexa Fluor® 647. Images were taken using Leica stellaris 5. Protein abundance based on laser Intensity and smart gain: High. Scale bar: 20  $\mu\text{m}$ .



Western blotting analysis using anti-Hsp60 antibody 1:5,000 and HRP-conjugated goat anti-rabbit secondary antibody 1:20,000 respectively. Image was developed using FeQ™ ECL Substrate Kit .



Western blotting analysis using anti-Hsp60 antibody 1:5,000 and HRP-conjugated goat anti-rabbit secondary antibody 1:20,000 respectively. Image was developed using FeQ™ ECL Substrate Kit .