



SunLong Biotech Co.,LTD  
Tel: 0086-571- 56623320 Fax:0086-571- 56623318  
E-mail:sales@sunlongbiotech.com  
www.sunlongbiotech.com

## [KD-Validated] Anti-Histone deacetylase 1 Rabbit Monoclonal Antibody

Cat No.: KD-10953

### Aliases:

HDAC1; Histone Deacetylase; HD1; GON-10; RPD3L1; KDAC1; Protein Deacetylase  
HDAC1; Protein Deacetylase HDAC1; EC 3.5.1.98; Reduced Potassium Dependency,  
Yeast Homolog-Like 1; EC 3.5.1.; RPD3

### Background:

UniProt Entry: [Q13547](#);NCBI Gene Entry: [3065](#)

### Application Information

Molecular Weight: Predicted, 55 kDa, observed, 55 kDa Clonality: Rabbit monoclonal  
antibody Clone ID: 23GB4785 Species Reactivity: Human, Mouse, Rat Applications  
Tested: Western Blotting (WB), Flow Cytometry (FCM)

### Immunogen

A synthesized peptide derived from human HDAC1

### Isotype

Rabbit IgG

### Storage Buffer

Supplied in PBS (pH 7.4) containing 50% glycerol, and 0.02% sodium azide.

### Storage

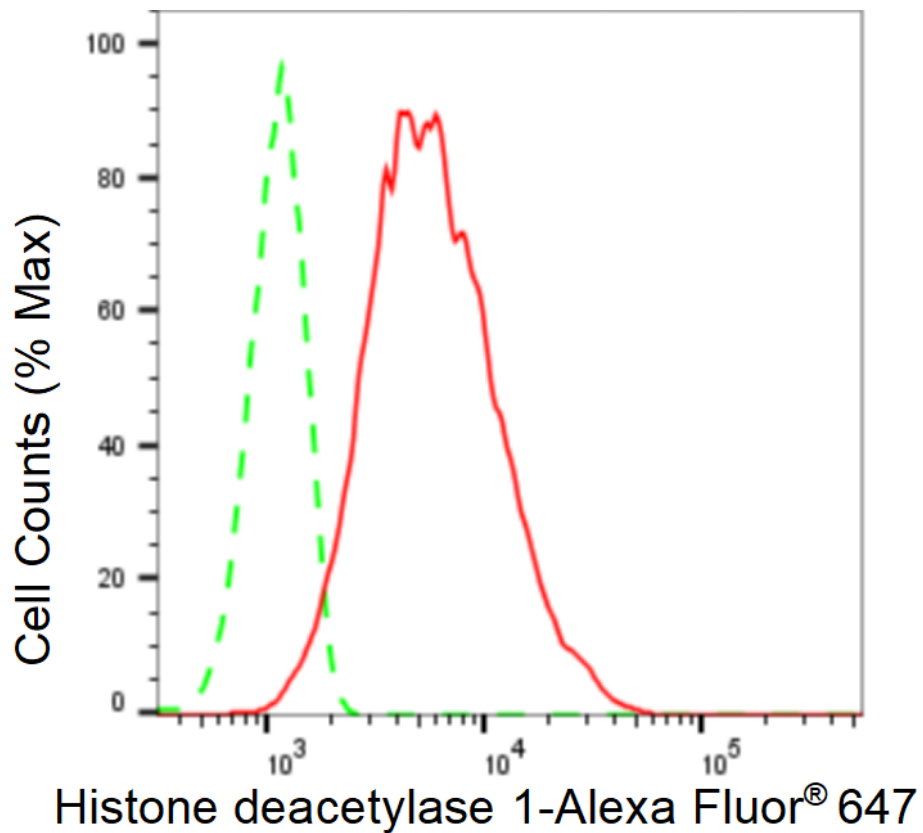
Store at -20 °C for one year.

### Recommended Dilutions

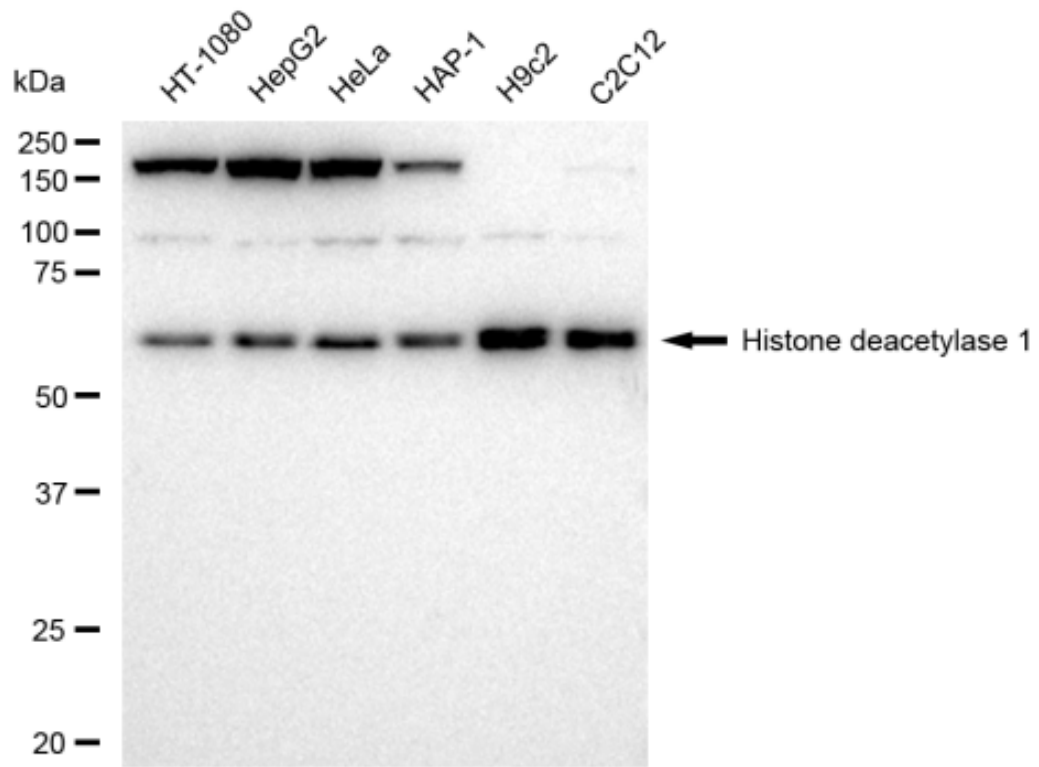
Western Blotting (WB): 1:1,000-1:5,000 Flow Cytometry (FCM): 1:2,000

### Protocols

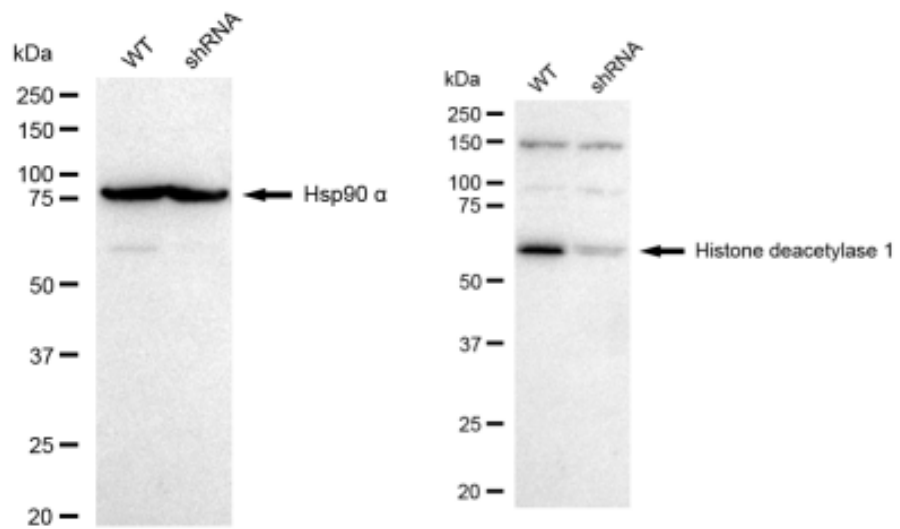
For general and specific antibody protocols please visit our website. Read all instructions before using this product.



Flow cytometric analysis of Histone deacetylase 1 expression in C2C12 cells using Histone deacetylase 1 antibody (KD-10953, 1:2,000). Green, isotype control; red, Histone deacetylase 1.



Western blotting analysis using anti-Histone deacetylase 1 antibody 1:5,000 and HRP-conjugated goat anti-rabbit secondary antibody 1:20,000 respectively. Image was developed using FeQ™ ECL Substrate Kit .



Western blotting analysis using anti-Histone deacetylase 1 antibody 1:5,000 and HRP-conjugated goat anti-rabbit secondary antibody 1:20,000 respectively. Image was developed using FeQ™ ECL Substrate Kit .