



SunLong Biotech Co.,LTD
Tel: 0086-571- 56623320 Fax:0086-571- 56623318
E-mail:sales@sunlongbiotech.com
www.sunlongbiotech.com

[KD-Validated] Anti-Stat3 Rabbit Monoclonal Antibody

Cat No.: KD-10843

Aliases:

Signal Transducer And Activator Of Transcription 3; APRF; Acute-Phase Response Factor; Signal Transducer And Activator Of Transcription 3 (Acute-Phase Response Factor); DNA-Binding Protein APRF; ADMIO1; ADMIO; HIES

Background:

UniProt Entry: [P40763](#);NCBI Gene Entry: [6774](#)

Application Information

Molecular Weight: Predicted, 88 kDa, observed, 88 kDa Clonality: Rabbit monoclonal antibody Clone ID: 23GB990 Species Reactivity: Human, Mouse, Rat Applications Tested: Western Blotting (WB), Flow Cytometry (FCM)

Immunogen

A synthesized peptide derived from human beta STAT3

Isotype

Rabbit IgG

Storage Buffer

Supplied in PBS (pH 7.4) containing 50% glycerol, and 0.02% sodium azide.

Storage

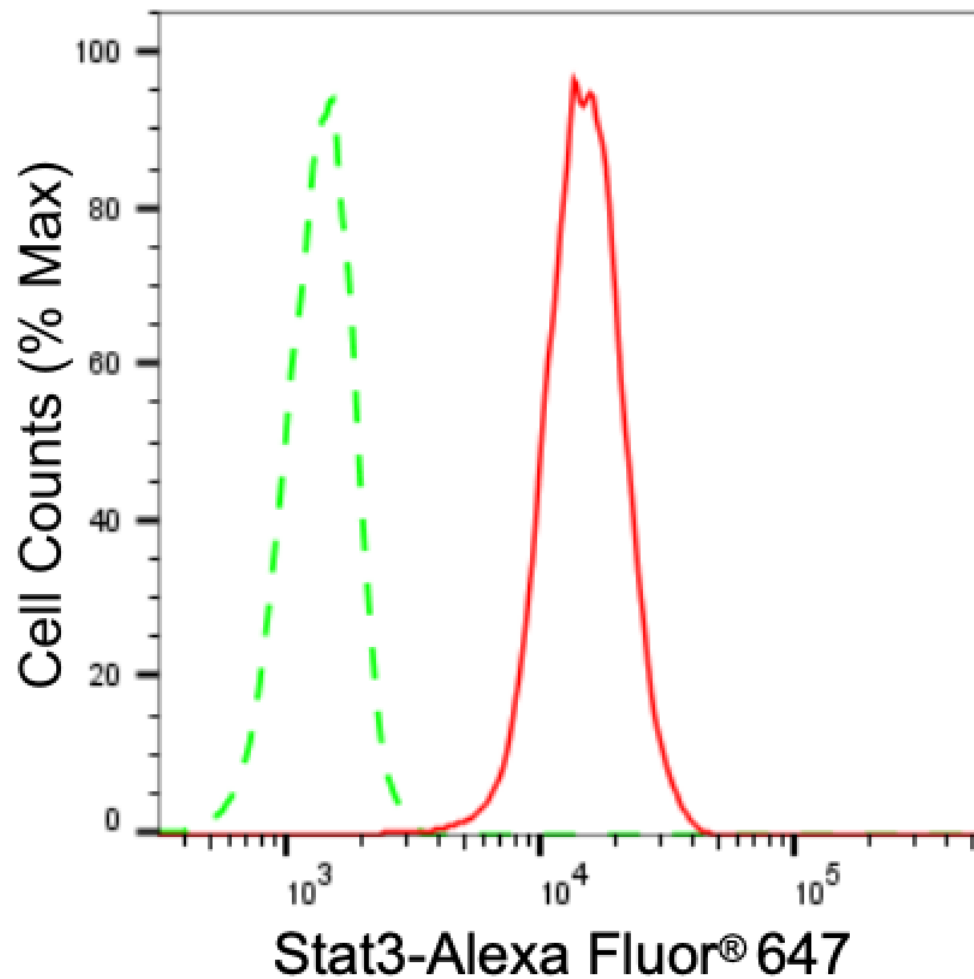
Store at -20 °C for one year.

Recommended Dilutions

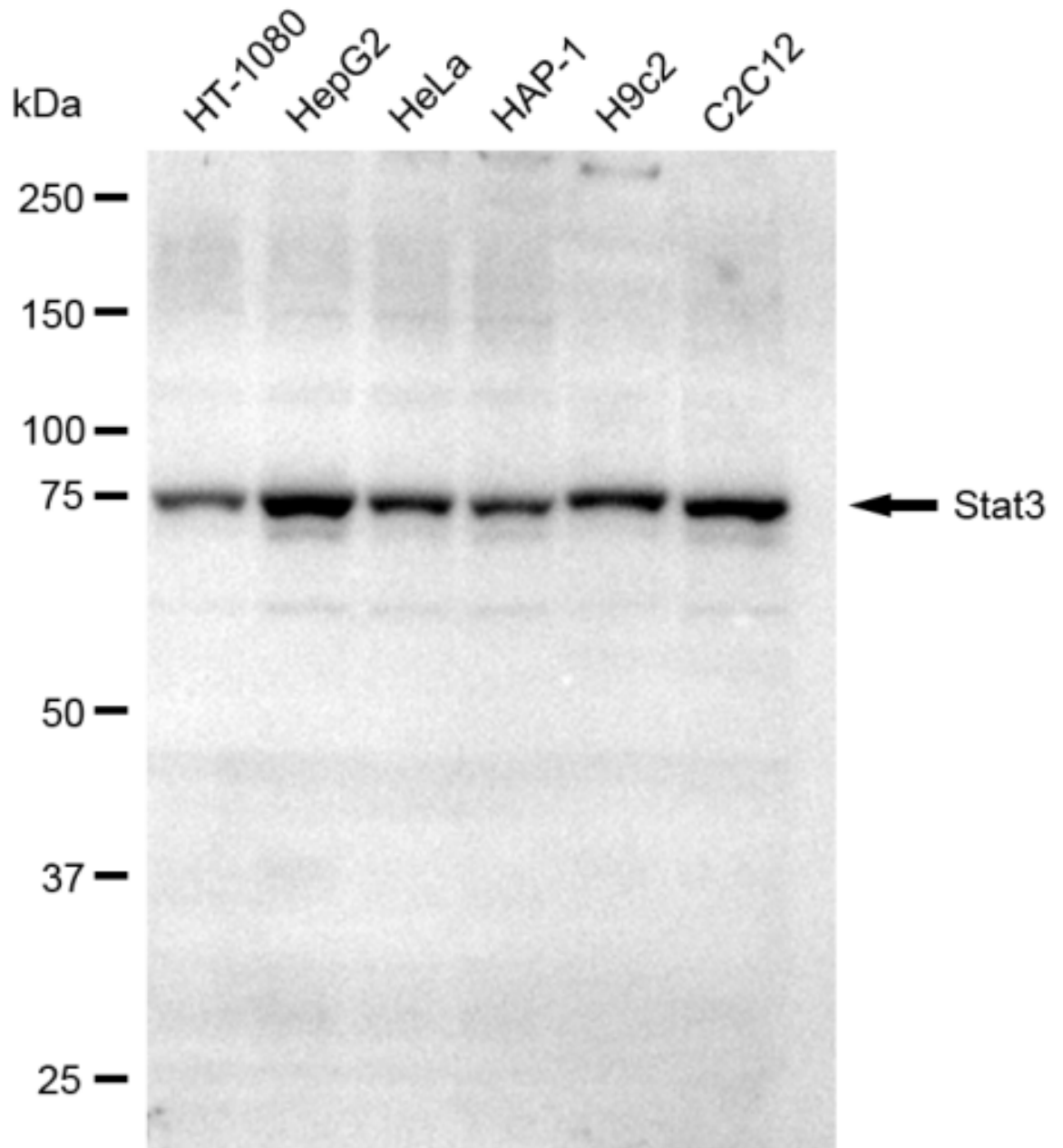
Western Blotting (WB): 1:1,000-1:5,000 Flow Cytometry (FCM): 1:2,000

Protocols

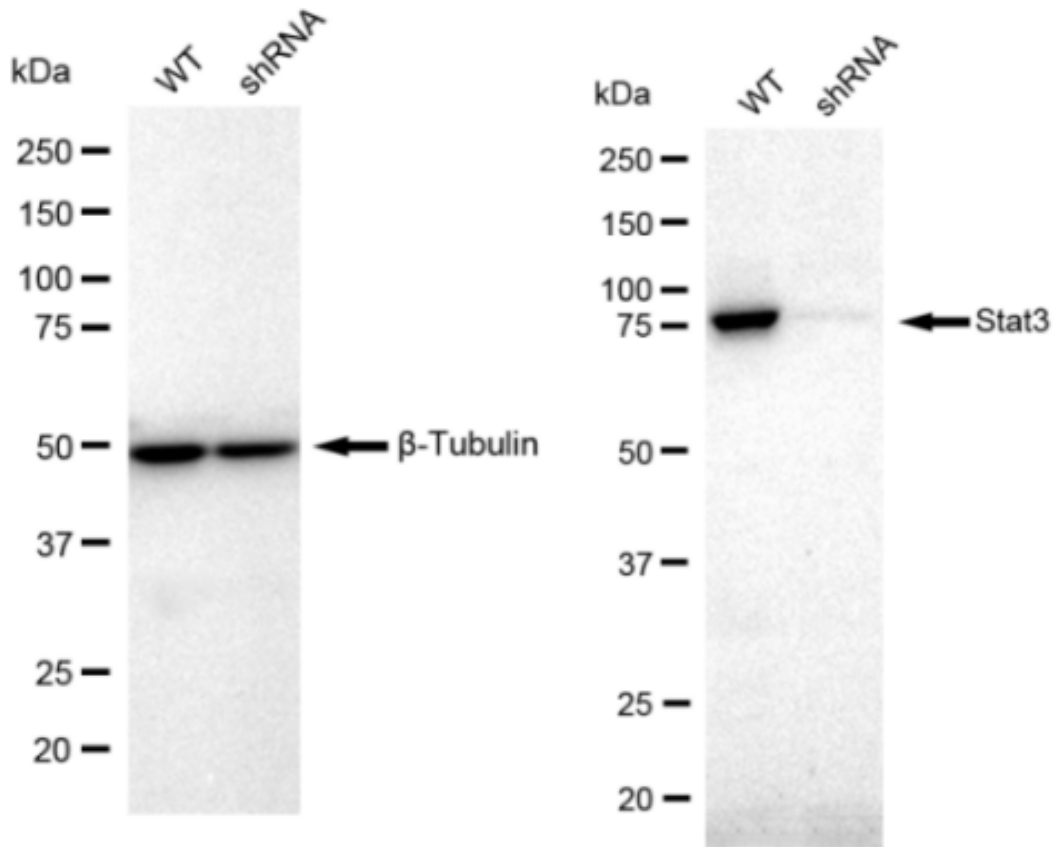
For general and specific antibody protocols please visit our website. Read all instructions before using this product.



Flow cytometric analysis of Stat3 expression in C2C12 cells using Stat3 antibody 1:2,000. Green, isotype control; red, Stat3.



Western blotting analysis using anti-Stat3 antibody 1:5,000 and HRP-conjugated goat anti rabbit secondary antibody 1:50,000 respectively. Image was developed using FeQ™ ECL Substrate Kit .



Western blotting analysis using anti-Stat3 antibody 1:5,000 and HRP-conjugated goat anti rabbit secondary antibody 1:50,000 respectively. Image was developed using FeQ™ ECL Substrate Kit .