



SunLong Biotech Co.,LTD
Tel: 0086-571- 56623320 Fax:0086-571- 56623318
E-mail:sales@sunlongbiotech.com
www.sunlongbiotech.com

[KD-Validated] Anti-STAT1 Rabbit Monoclonal Antibody

Cat No.: KD-10842

Aliases:

STAT1; Signal Transducer And Activator Of Transcription 1; Transcription Factor ISGF-3 Components P91/P84; STAT91; ISGF-3; Signal Transducer And Activator Of Transcription 1-Alpha/Beta; Signal Transducer And Activator Of Transcription 1, 91kDa; Signal Transducer And Activator Of Transcription 1, 91kD; CANDF7; IMD31A; IMD31B; IMD31C

Background:

UniProt Entry: [P42224](#);NCBI Gene Entry: [6772](#)

Application Information

Molecular Weight: Predicted, 87 kDa, observed, 87 kDa Clonality: Rabbit monoclonal antibody Clone ID: 23GB4195 Species Reactivity: Human, Mouse, Rat Applications Tested: Western Blotting (WB), Flow Cytometry (FCM), Immunocytochemistry (IC)

Immunogen

A synthesized peptide derived from human STAT1 alpha

Isotype

Rabbit IgG

Storage Buffer

Supplied in PBS (pH 7.4) containing 50% glycerol, and 0.02% sodium azide.

Storage

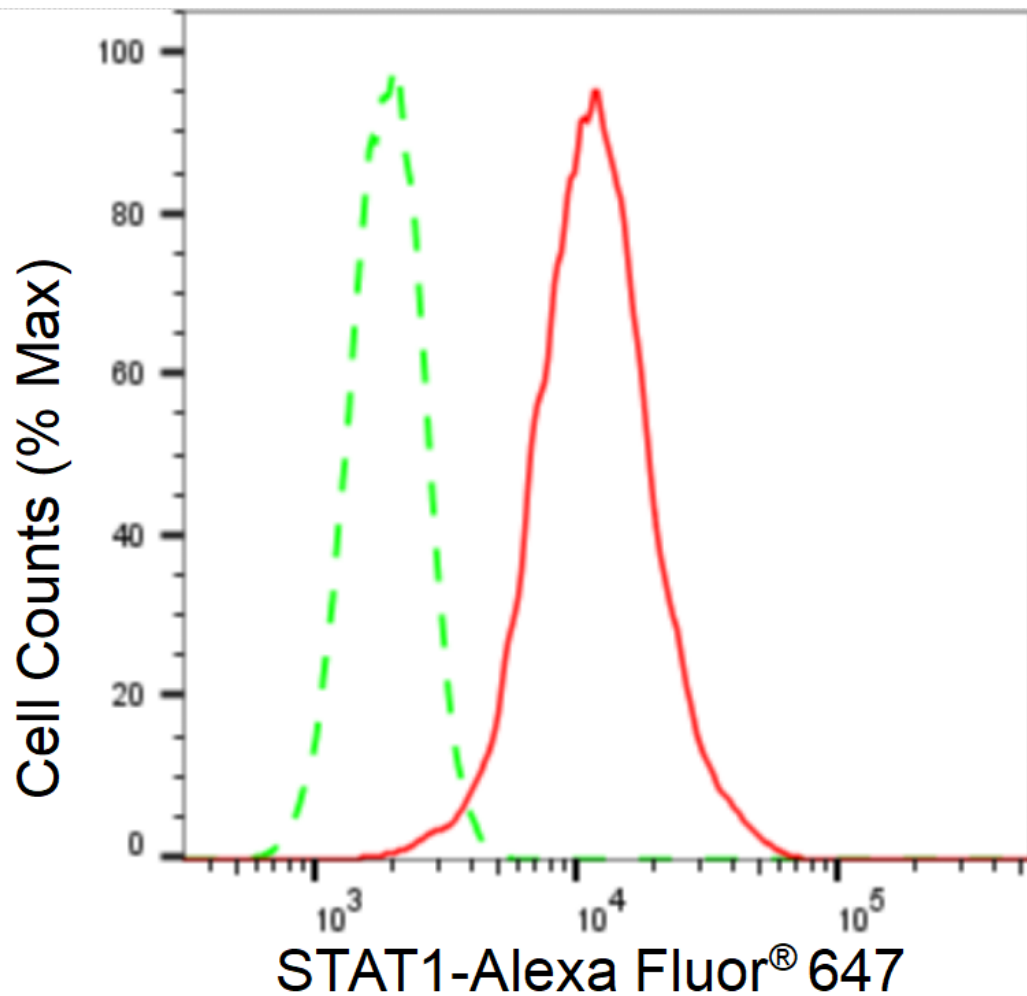
Store at -20 °C for one year.

Recommended Dilutions

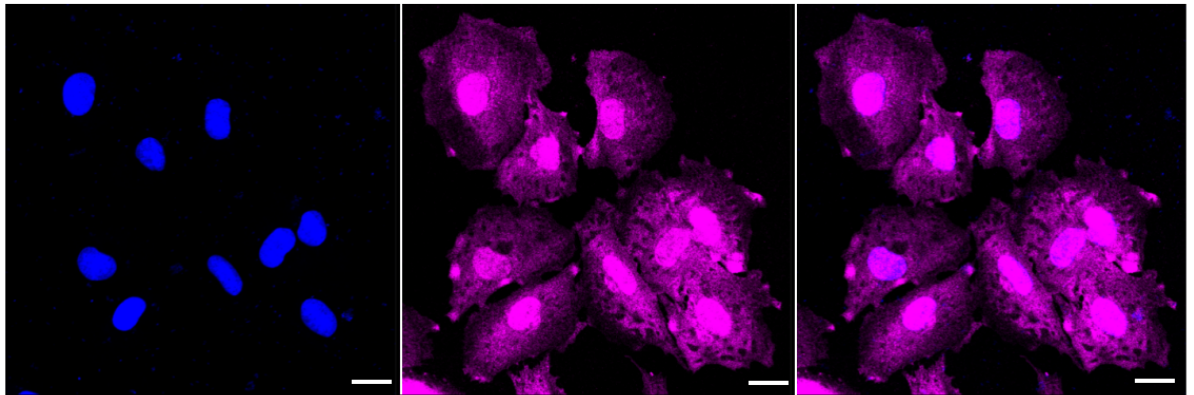
Western Blotting (WB): 1:1,000-1:5,000 Flow Cytometry (FCM): 1:2,000
Immunocytochemistry (IC): 1:1,000

Protocols

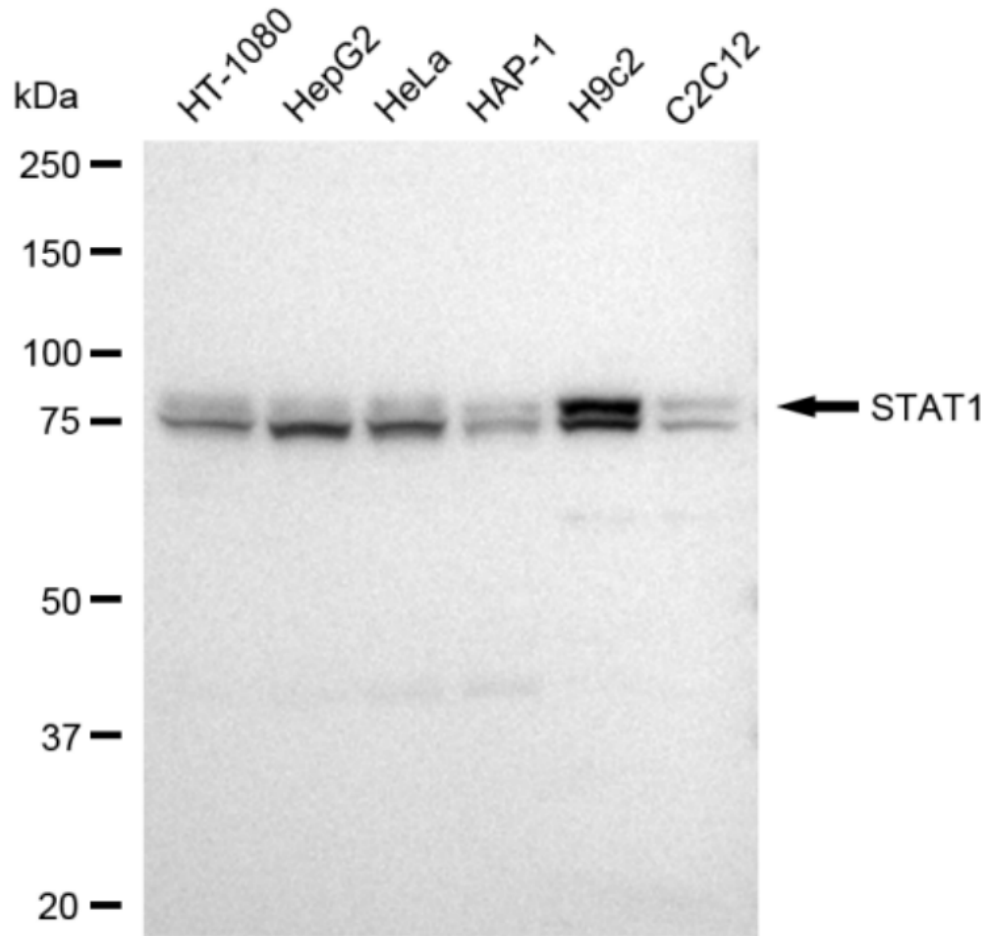
For general and specific antibody protocols please visit our website. Read all instructions before using this product.



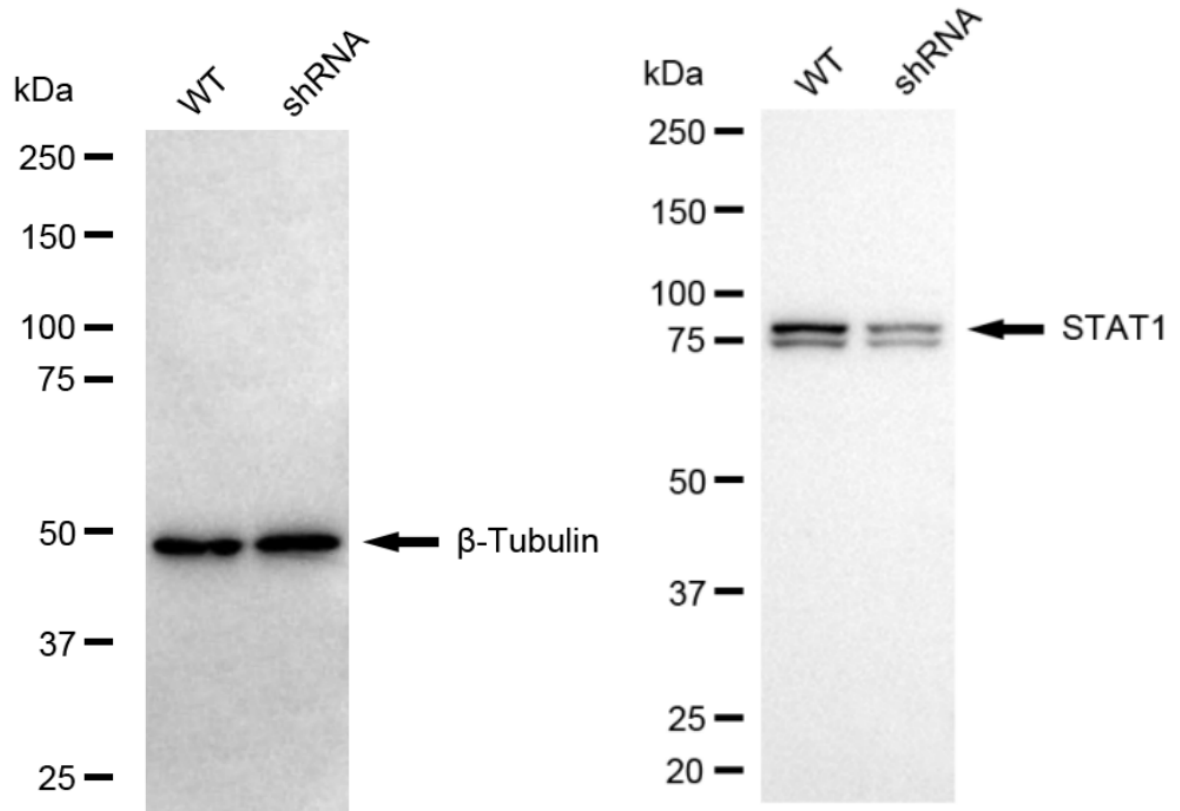
Flow cytometric analysis of STAT1 expression in H9c2 cells using STAT1 antibody 1:2,000. Green, isotype control; red, STAT1.



Immunocytochemical staining of H9C2 cells with STAT1 antibody 1:1,000. Nuclei were stained blue with DAPI; STAT1 was stained magenta with Alexa Fluor® 647. Images were taken using Leica stellaris 5. Protein abundance based on laser Intensity and smart gain: Medium. Scale bar: 20 μ m.



Western blotting analysis using anti-STAT1 antibody 1:5,000 and HRP-conjugated goat anti-rabbit secondary antibody 1:20,000 respectively. Image was developed using FeQ™ ECL Substrate Kit .



Western blotting analysis using anti-STAT1 antibody 1:20,000 and HRP-conjugated goat anti-rabbit secondary antibody 1:20,000 respectively. Image was developed using NaQ™ ECL Substrate Kit .