



SunLong Biotech Co.,LTD
Tel: 0086-571- 56623320 Fax:0086-571- 56623318
E-mail:sales@sunlongbiotech.com
www.sunlongbiotech.com

[KD-Validated] Anti-Serine Racemase Rabbit Monoclonal Antibody

Cat No.: KD-10838

Aliases:

SRR; Serine Racemase; ILV1; ISO1; D-Serine Ammonia-Lyase; L-Serine Ammonia-Lyase; D-Serine Dehydratase; L-Serine Dehydratase; EC 5.1.1.18; EC 4.3.1.18; EC 4.3.1.17

Background:

UniProt Entry: [Q9GZT4](#);NCBI Gene Entry: [63826](#)

Application Information

Molecular Weight: Predicted, 37 kDa, observed, 34-36 kDa Clonality: Rabbit monoclonal antibody Clone ID: 24GB2345 Spcies Reacnivity: Human Applctanions Tsed: Western Blotting (WB), Flow Cytometry (FCM), Immunocytochemistry (IC)

Immunogen

A synthesized peptide derived from human Serine racemase

Isotype

Rabbit IgG

Storage Buffer

Supplied in PBS (pH 7.4) containing 50% glycerol, and 0.02% sodium azide.

Storage

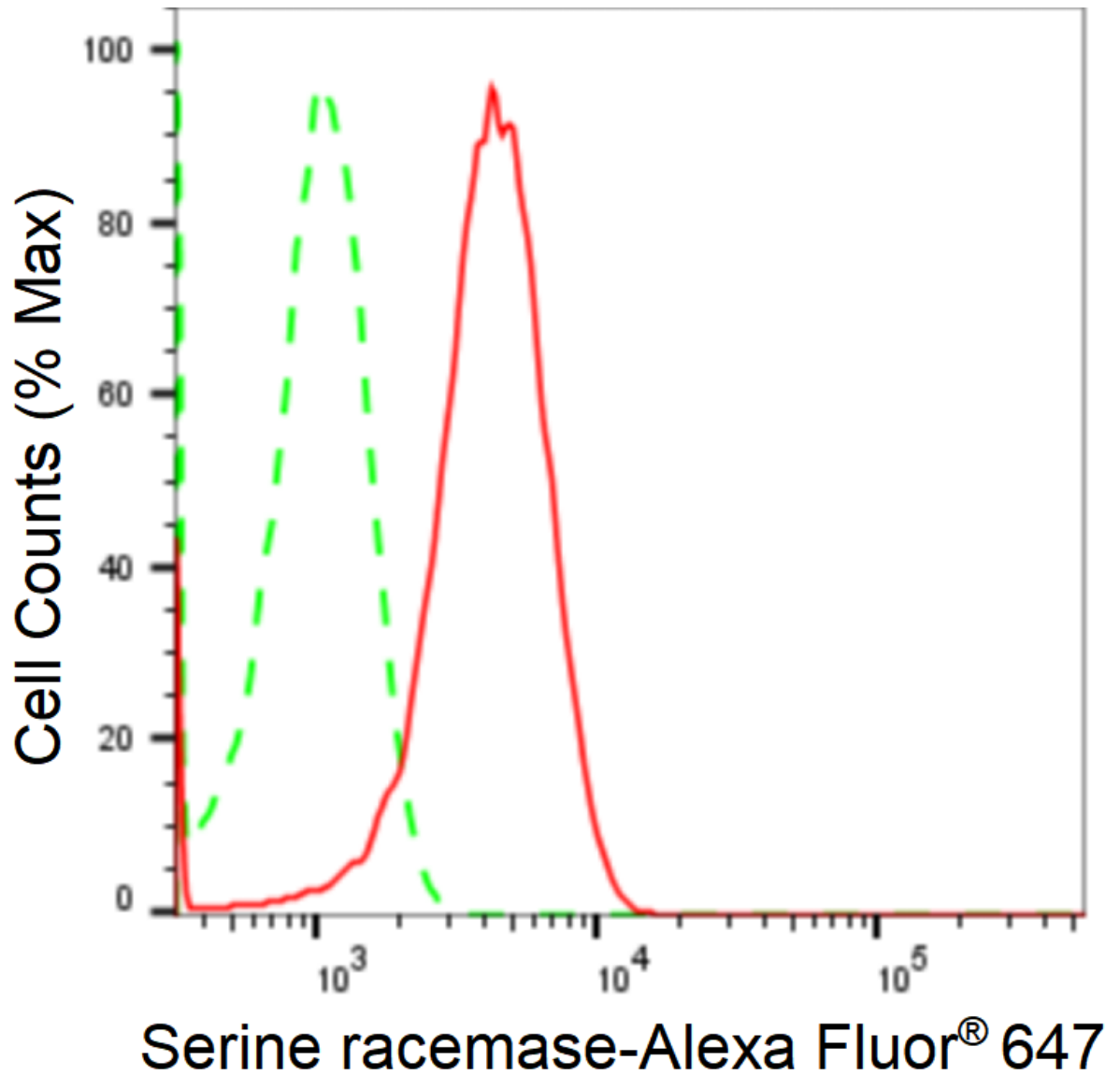
Store at -20 °C for one year.

Recommended Dilutions

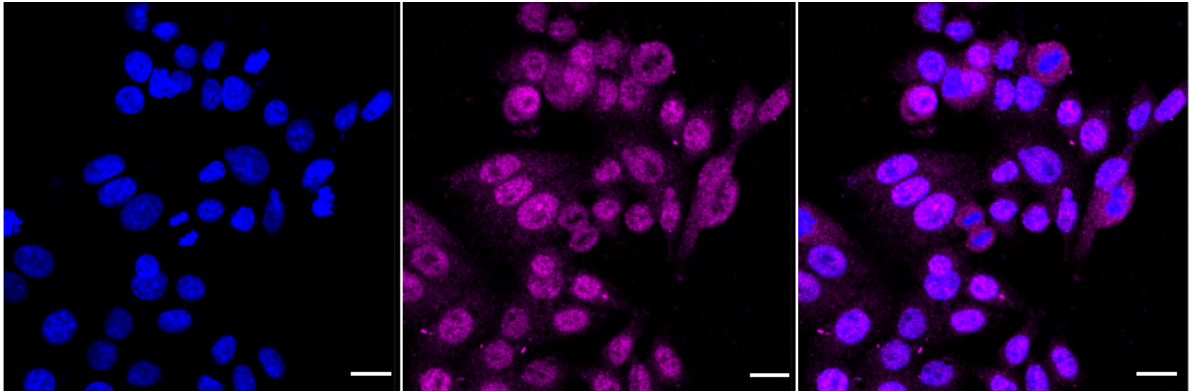
Western Blotting (WB): 1:1,000-1:5,000 Flow Cytometry (FCM): 1:2,000
Immunocytochemistry (IC): 1:1,000

Protocols

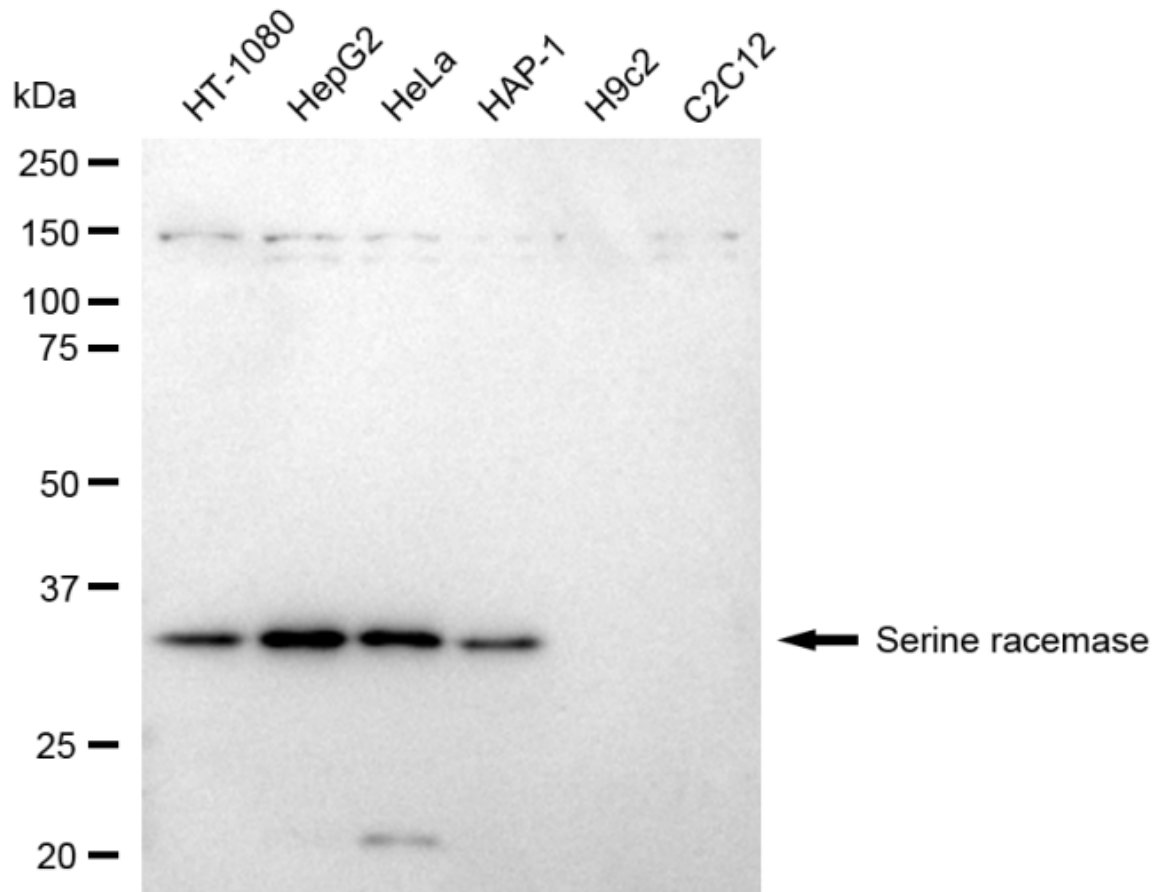
For general and specific antibody protocols please visit our website. Read all instructions before using this product.



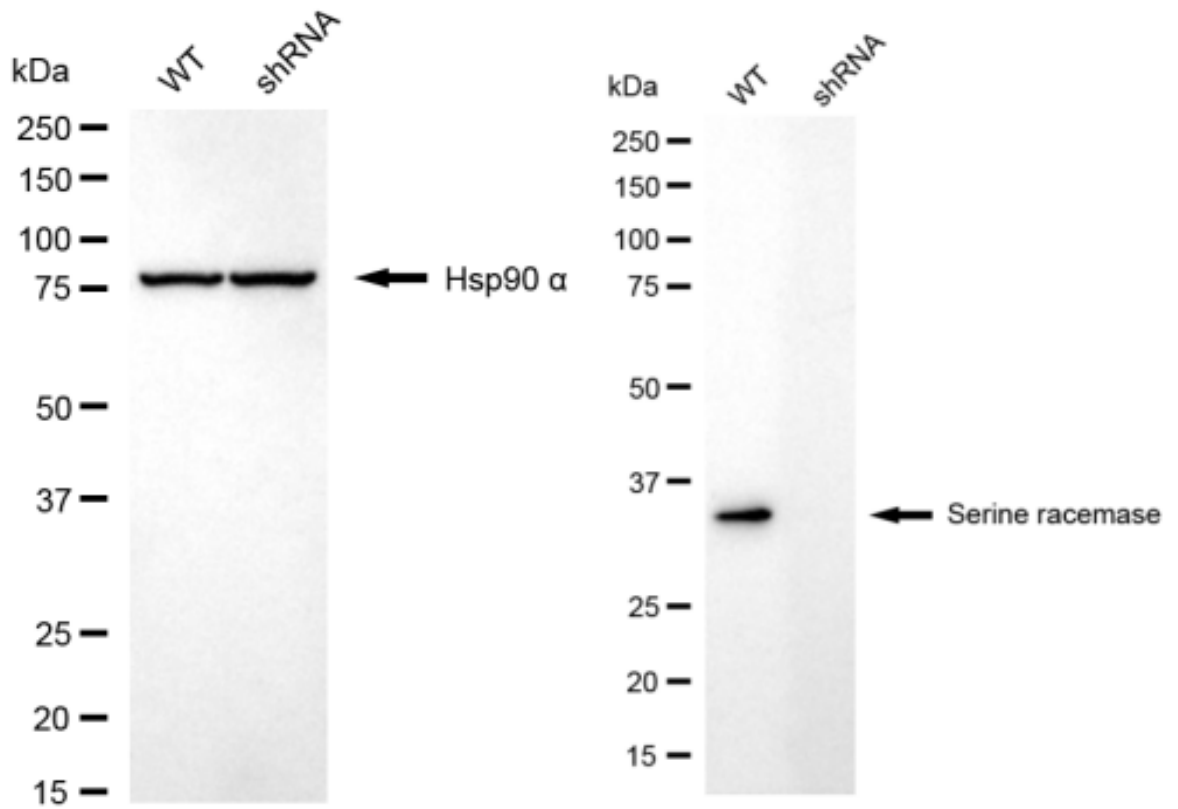
Flow cytometric analysis of Serine racemase expression in HepG2 cells using anti-Serine racemase antibody 1:2,000. Green, isotype control; red, Serine racemase.



Immunocytochemical staining of HepG2 cells with anti-Serine racemase antibody 1:1,000. Nuclei were stained blue with DAPI; Serine racemase was stained magenta with Alexa Fluor® 647. Images were taken using Leica stellaris 5. Protein abundance based on laser Intensity and smart gain: Medium. Scale bar: 20 μ m.



Western blotting analysis using anti-Serine racemase antibody 1:5,000 and HRP-conjugated goat anti-rabbit secondary antibody 1:20,000 respectively. Image was developed using FeQ™ ECL Substrate Kit .



Western blotting analysis using anti-Serine racemase antibody 1:5,000 and HRP-conjugated goat anti-rabbit secondary antibody 1:20,000 respectively. Image was developed using NaQ™ ECL Substrate Kit .