



SunLong Biotech Co.,LTD
Tel: 0086-571- 56623320 Fax:0086-571- 56623318
E-mail:sales@sunlongbiotech.com
www.sunlongbiotech.com

[KD-Validated] Anti-Phospho-Src (Y529) Rabbit Monoclonal Antibody

Cat No.: KD-10836

Aliases:

SRC; SRC Proto-Oncogene, Non-Receptor Tyrosine Kinase; C-Src; SRC1; ASV; V-Src Avian Sarcoma (Schmidt-Ruppin A-2) Viral Oncogene Homolog; Proto-Oncogene Tyrosine-Protein Kinase Src; Proto-Oncogene C-Src; EC 2.7.10.2; P60-Src; Protooncogene SRC, Rous Sarcoma; Tyrosine-Protein Kinase SRC-1; Tyrosine Kinase Pp60c-Src; Pp60c-Src; EC 2.7.10; THC6

Background:

UniProt Entry: [P12931](#);NCBI Gene Entry: [6714](#)

Application Information

Molecular Weight: Predicted, 60 kDa, observed, 60 kDa Clonality: Rabbit monoclonal antibody Clone ID: 23GB6690 Species Reactivity: Human, Mouse, Rat Applications Tested: Western Blotting (WB)

Immunogen

A synthesized peptide derived from human Phospho-Src (Y529)

Isotype

Rabbit IgG

Storage Buffer

Supplied in PBS (pH 7.4) containing 50% glycerol, and 0.02% sodium azide.

Storage

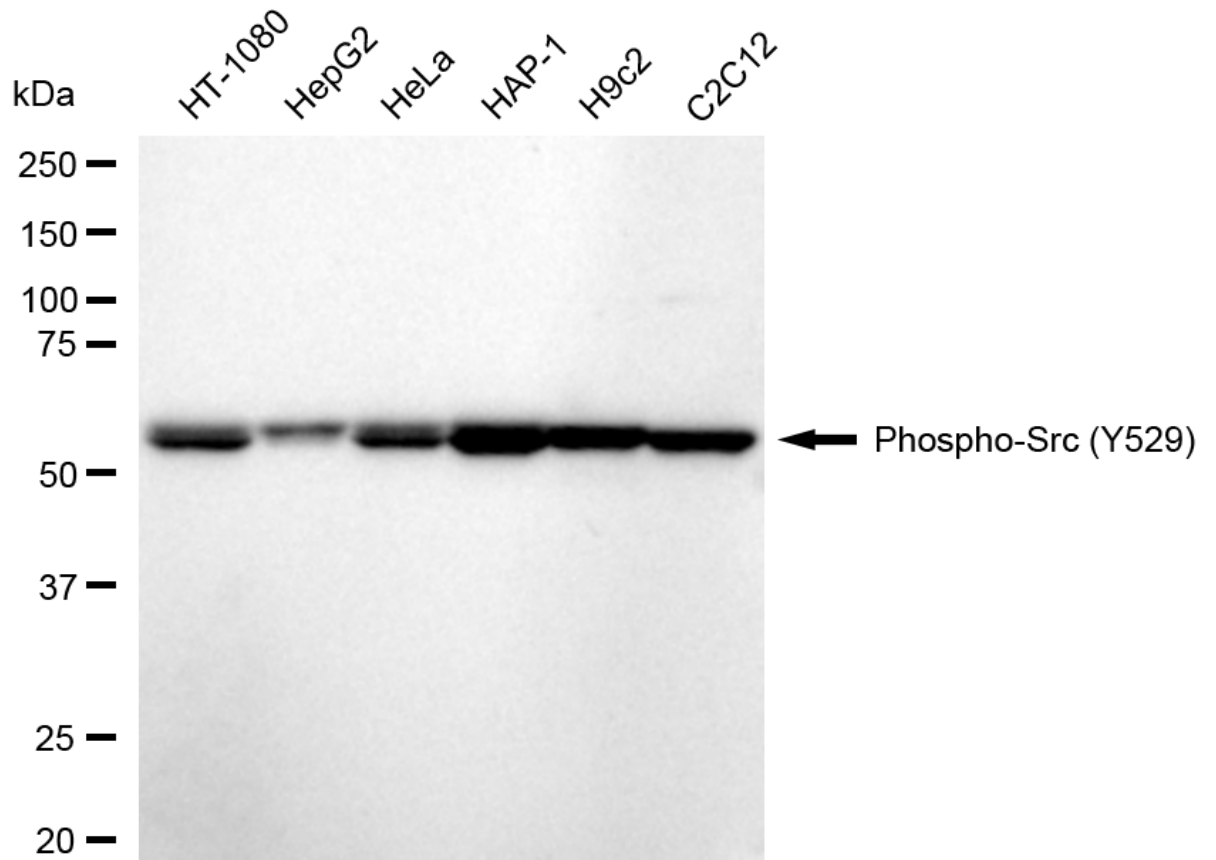
Store at -20 °C for one year.

Recommended Dilutions

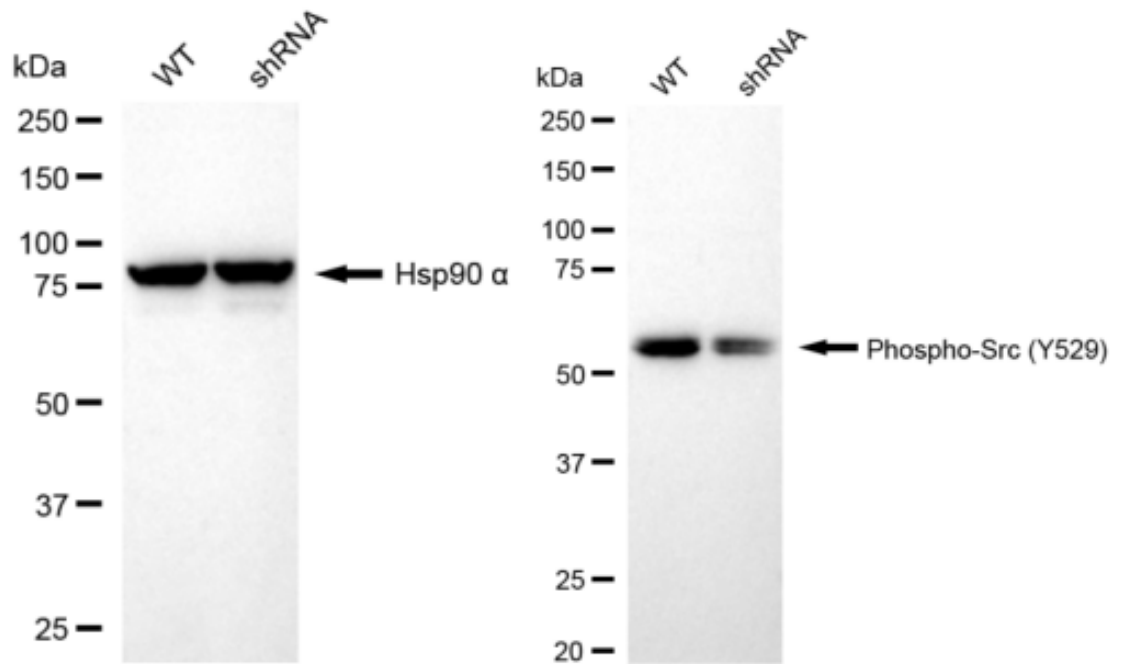
Western Blotting (WB): 1:1,000-1:5,000

Protocols

For general and specific antibody protocols please visit our website. Read all instructions before using this product.



Western blotting analysis using anti-Phospho-Src (Y529) antibody 1:5,000 and HRP-conjugated goat anti-rabbit secondary antibody 1:20,000 respectively. Image was developed using FeQ™ ECL Substrate Kit .



Western blotting analysis using anti-Phospho-Src (Y529) antibody 1:5,000 and HRP-conjugated goat anti-rabbit secondary antibody 1:20,000 respectively. Image was developed using FeQ™ ECL Substrate Kit .