



SunLong Biotech Co.,LTD  
Tel: 0086-571- 56623320 Fax:0086-571- 56623318  
E-mail:sales@sunlongbiotech.com  
www.sunlongbiotech.com

## [KD-Validated] Anti-Src Rabbit Monoclonal Antibody

Cat No.: KD-10835

### Aliases:

SRC Proto-Oncogene, Non-Receptor Tyrosine Kinase; SRC1; ASV; V-Src Avian Sarcoma (Schmidt-Ruppin A-2) Viral Oncogene Homolog; Proto-Oncogene Tyrosine-Protein Kinase Src; Proto-Oncogene C-Src; EC 2.7.10.2; P60-Src; C-Src; Protooncogene SRC, Rous Sarcoma; Tyrosine Protein Kinase SRC-1; Tyrosine Kinase Pp60c-Src; Pp60c-Src; EC 2.7.10; C-SRC; THC6

### Background:

UniProt Entry: [P12931](#);NCBI Gene Entry: [6714](#)

### Application Information

Molecular Weight: Predicted, 60 kDa, observed, 60 kDa Clonality: Rabbit monoclonal antibody Clone ID: 23GB985 Species Reactivity: Human, Mouse, Rat Applications Tested: Western Blotting (WB), Flow Cytometry (FCM), Immunocytochemistry (IC)

### Immunogen

A synthesized peptide derived from human SRC

### Isotype

Rabbit IgG

### Storage Buffer

Supplied in PBS (pH 7.4) containing 50% glycerol, and 0.02% sodium azide.

### Storage

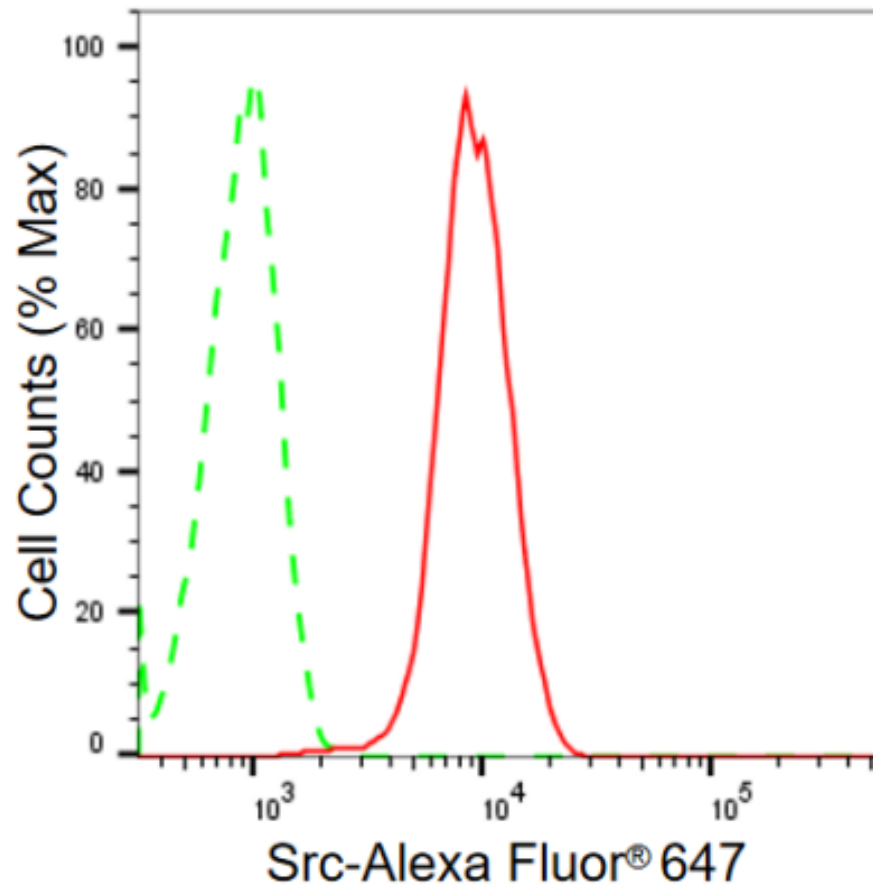
Store at -20 °C for one year.

### Recommended Dilutions

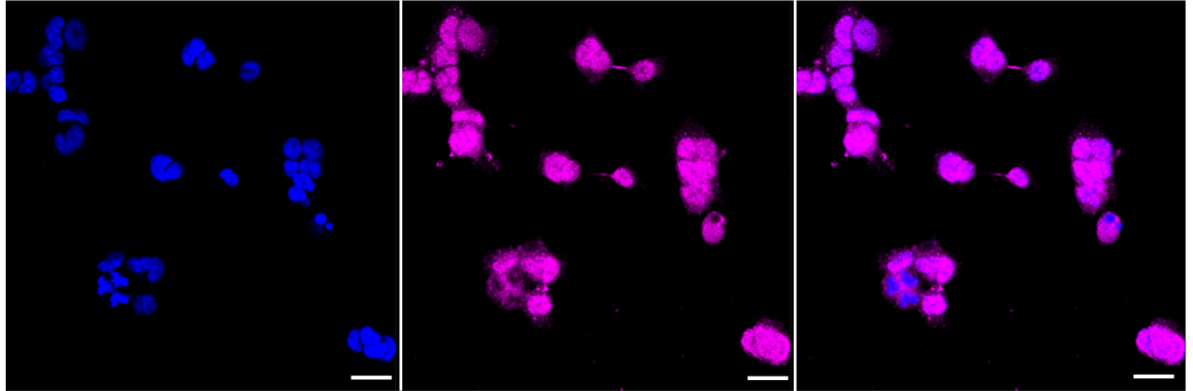
Western Blotting (WB): 1:1,000-1:5,000 Flow Cytometry (FCM): 1:2,000  
Immunocytochemistry (IC): 1:1,000

### Protocols

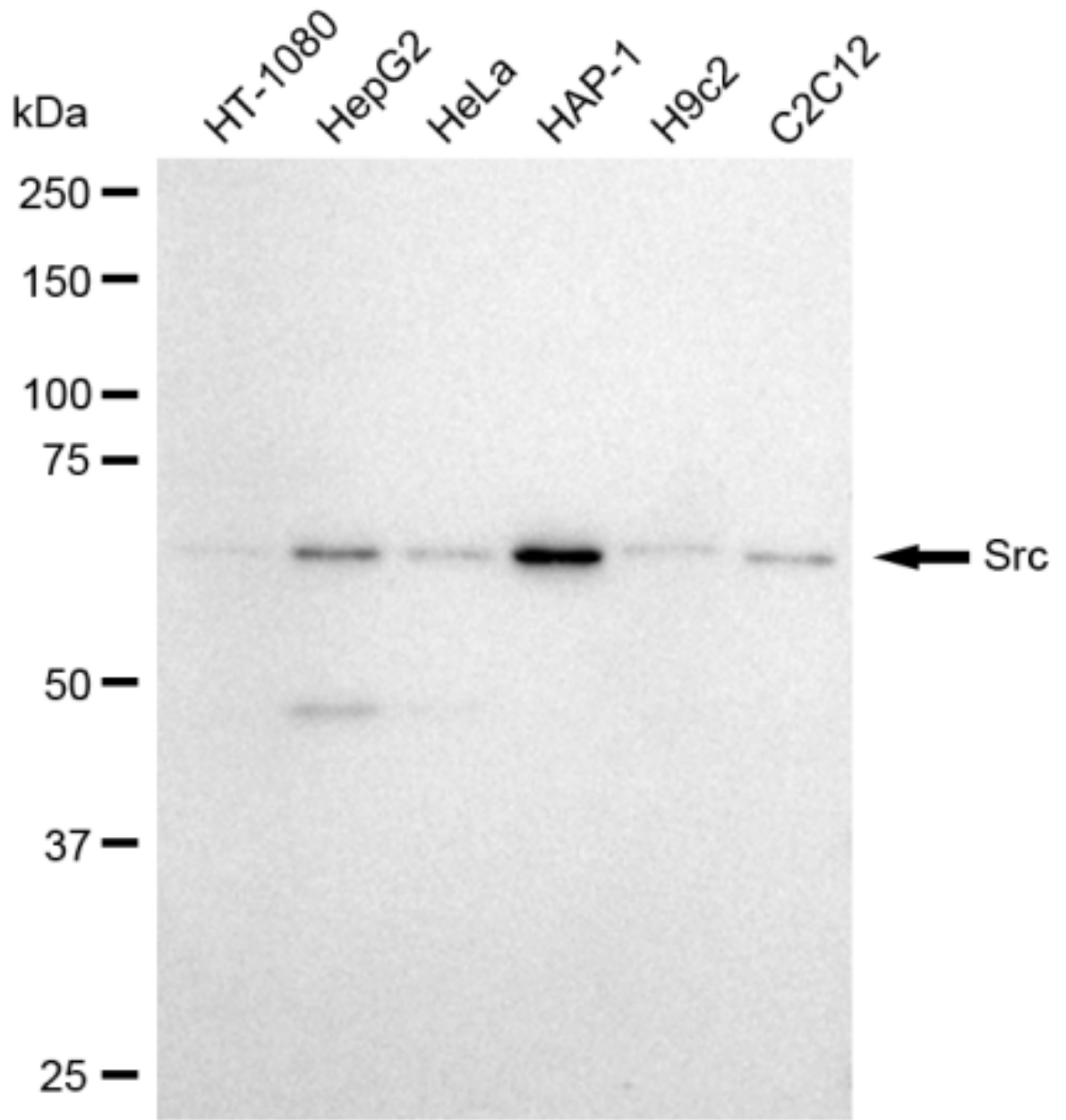
For general and specific antibody protocols please visit our website. Read all instructions before using this product.



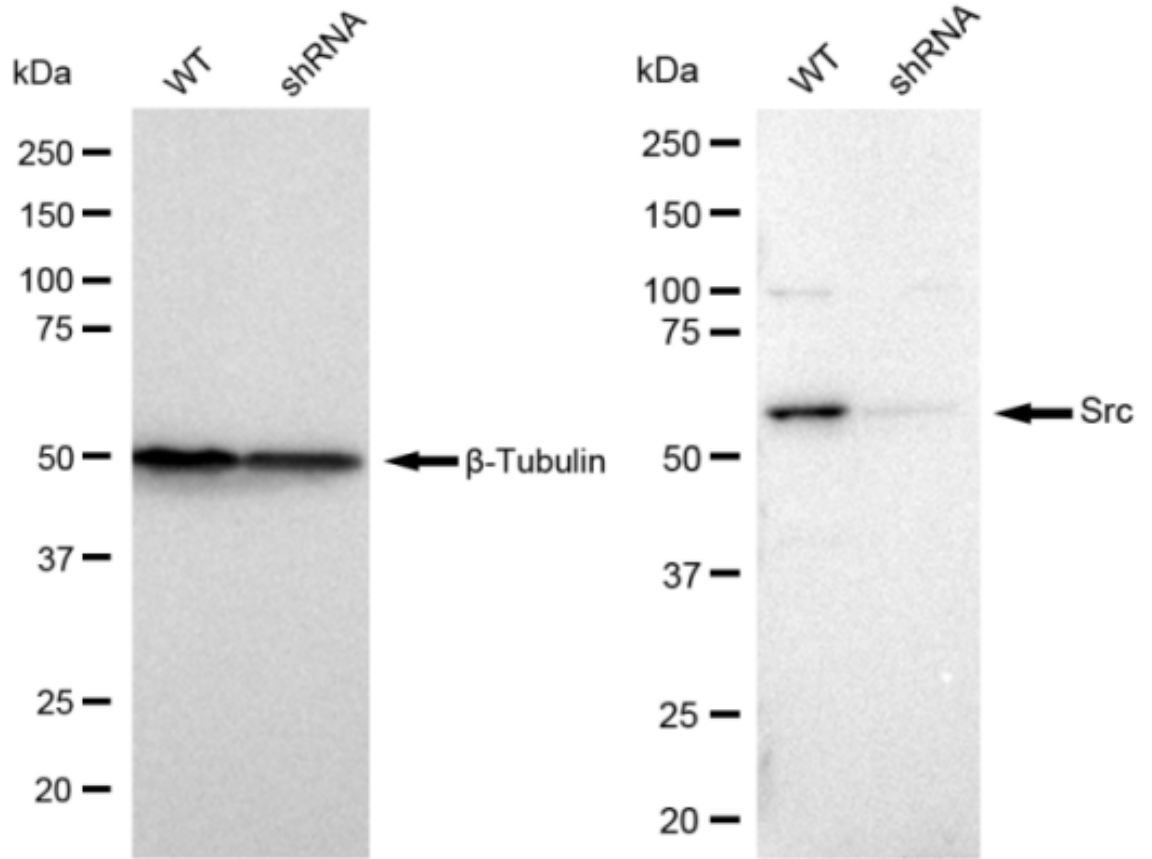
Flow cytometric analysis of Src in HAP-1 cells using Src antibody 1:2,000. Green, isotype control; red, Src.



Immunocytochemical staining of HAP-1 cells with Src antibody 1:1,000. Nuclei were stained blue with DAPI; Src was stained magenta with Alexa Fluor® 647. Images were taken using Leica stellaris 5. Protein abundance based on laser Intensity and smart gain: Medium. Scale bar: 20  $\mu\text{m}$ .



Western blotting analysis using anti-Src antibody 1:5,000 and HRP-conjugated goat anti-rabbit secondary antibody 1:50,000 respectively. Image was developed using FeQ™ ECL Substrate Kit .



Western blotting analysis using anti-Src antibody 1:5,000 and HRP-conjugated goat anti-rabbit secondary antibody 1:50,000 respectively. Image was developed using FeQ™ ECL Substrate Kit .