



SunLong Biotech Co.,LTD
Tel: 0086-571- 56623320 Fax:0086-571- 56623318
E-mail:sales@sunlongbiotech.com
www.sunlongbiotech.com

[KD-Validated] Anti-Src Rabbit Monoclonal Antibody

Cat No.: KD-10833

Aliases:

SRC Proto-Oncogene, Non-Receptor Tyrosine Kinase; SRC1; ASV; V-Src Avian Sarcoma (Schmidt-Ruppin A-2) Viral Oncogene Homolog; Proto-Oncogene Tyrosine-Protein Kinase Src; Proto-Oncogene C-Src; EC 2.7.10.2; P60-Src; C-Src; Protooncogene SRC, Rous Sarcoma; Tyrosine Protein Kinase SRC-1; Tyrosine Kinase Pp60c-Src; Pp60c-Src; EC 2.7.10; C-SRC; THC6

Background:

UniProt Entry: [P12931](#);NCBI Gene Entry: [6714](#)

Application Information

Molecular Weight: Predicted, 60 kDa, observed, 60 kDa Clonality: Rabbit monoclonal antibody Clone ID: 23GB980 Species Reactivity: Human, Mouse, Rat Applications Tested: Western Blotting (WB), Flow Cytometry (FCM), Immunocytochemistry (IC)

Immunogen

A synthesized peptide derived from human Src

Isotype

Rabbit IgG

Storage Buffer

Supplied in PBS (pH 7.4) containing 50% glycerol, and 0.02% sodium azide.

Storage

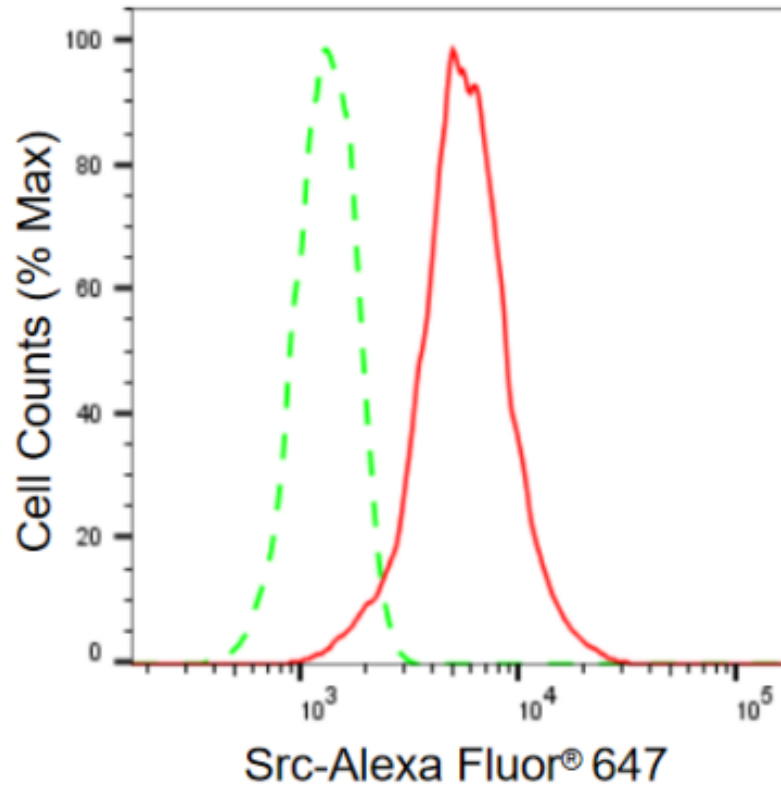
Store at -20 °C for one year.

Recommended Dilutions

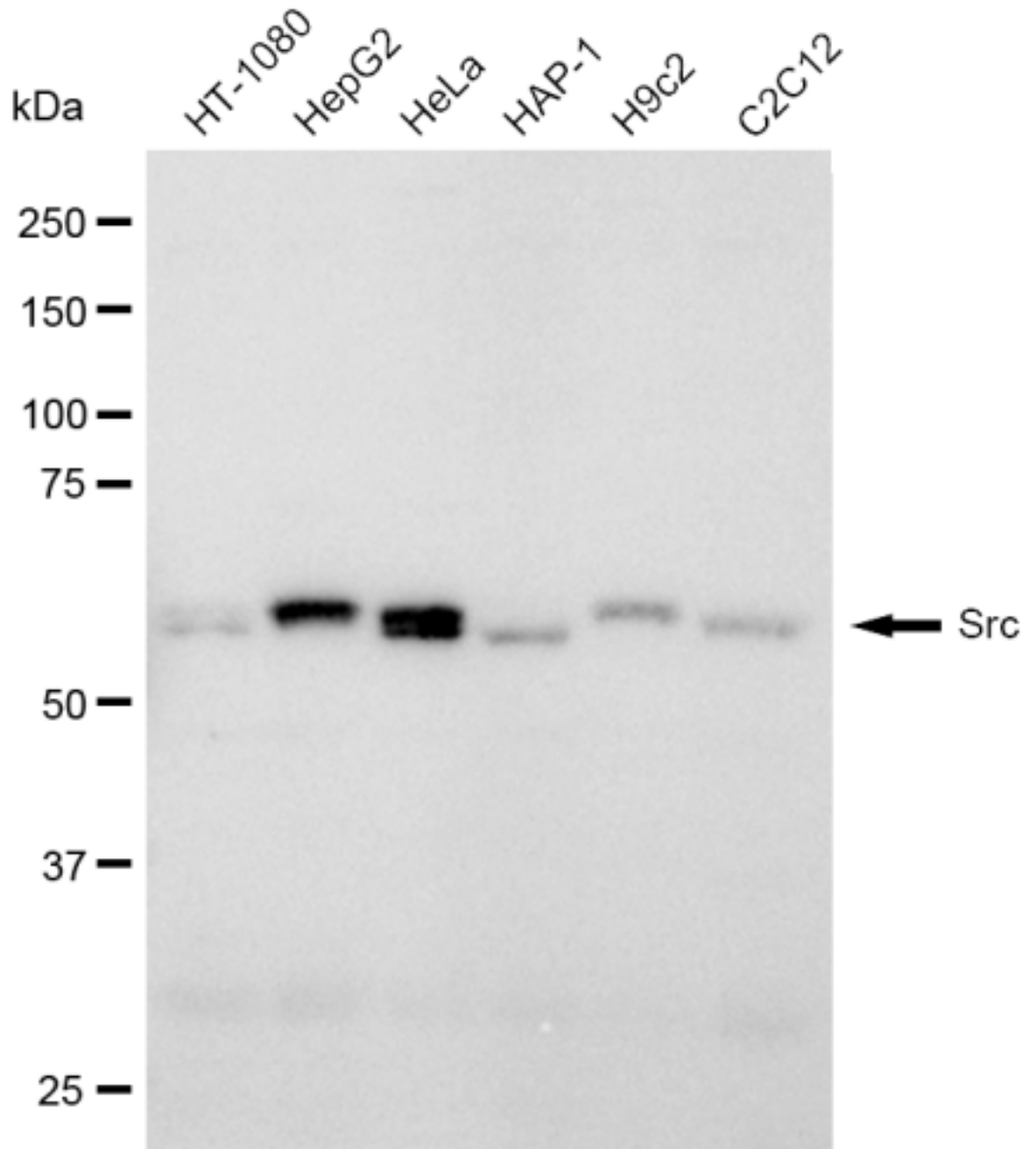
Western Blotting (WB): 1:1,000-1:5,000 Flow Cytometry (FCM): 1:2,000
Immunocytochemistry (IC): 1:1,000

Protocols

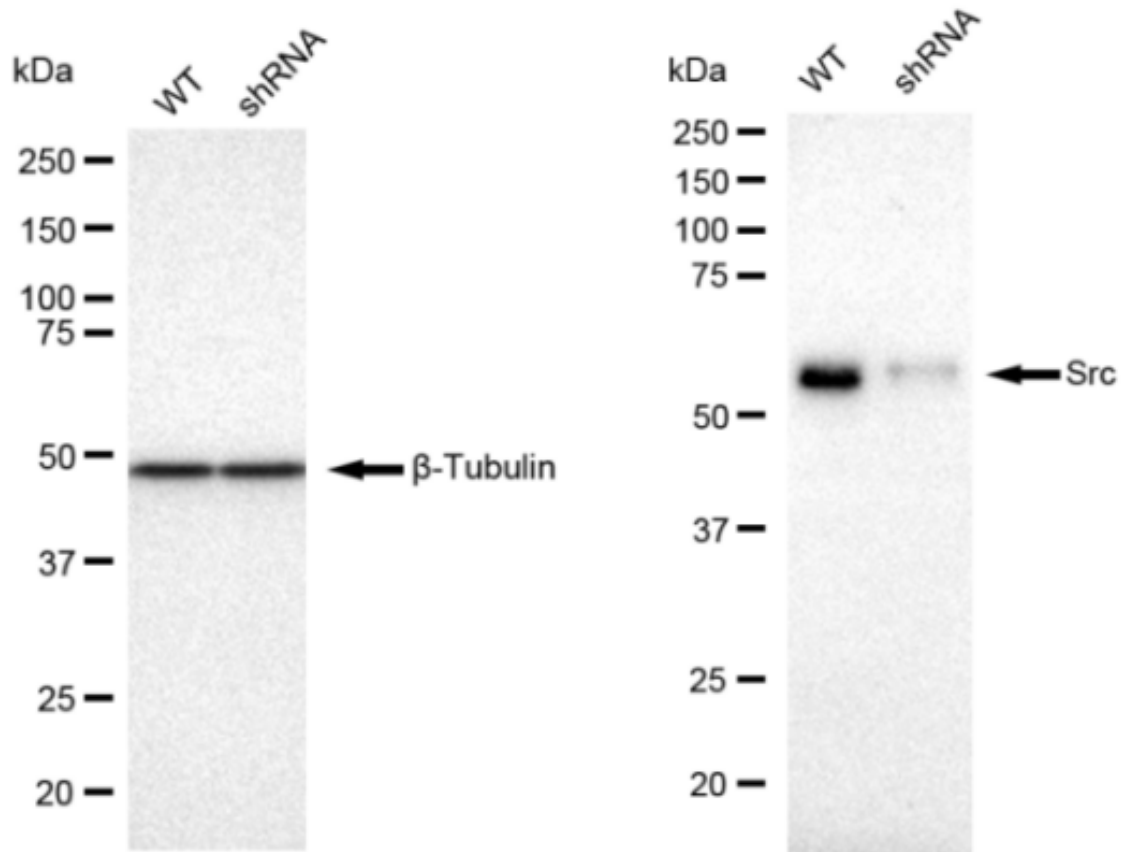
For general and specific antibody protocols please visit our website. Read all instructions before using this product.



Flow cytometric analysis of Src expression in HeLa cells using Src antibody 1:1,000. Nuclei were stained blue with DAPI; Src was stained magenta with Alexa Fluor® 647. Images were taken using Leica stellaris 5. Protein abundance based on laser Intensity and smart gain: Medium. Scale bar: 20 µm.



Western blotting analysis using anti-Src antibody . Total cell lysates (30 μ g) from various cell lines were loaded and separated by SDS-PAGE. The blot was incubated with anti-Src antibody and HRP-conjugated goat anti rabbit secondary antibody respectively. Image was developed using FeQTM ECL Substrate Kit .



Western blotting analysis using anti-Src antibody . Src expression in wild type (WT) and Src shRNA knockdown (KD) HT-1080 cells with 30 μ g of total cell lysates. β -Tubulin serves as a loading control. The blot was incubated with anti-Src antibody and HRP-conjugated goat anti rabbit secondary antibody respectively. Image was developed using FeQ™ ECL Substrate Kit .