



SunLong Biotech Co.,LTD
Tel: 0086-571- 56623320 Fax:0086-571- 56623318
E-mail:sales@sunlongbiotech.com
www.sunlongbiotech.com

[KD-Validated] Anti-SPINK5 Rabbit Monoclonal Antibody

Cat No.: KD-10832

Aliases:

SPINK5; Serine Peptidase Inhibitor Kazal Type 5; LEKTI; VAKTI; LETKI; NETS; NS; Lympho-Epithelial Kazal-Type-Related Inhibitor; Lymphoepithelial Kazal-Type-Related Inhibitor; Serine Protease Inhibitor Kazal-Type 5; FLJ21544; FLJ97536; FLJ97596 ; FLJ99794; Serine Protease Inhibitor, Kazal Type 5; DKFZp686K19184; DKFZP686K19184

Background:

UniProt Entry: [Q9NQ38](#);NCBI Gene Entry: [11005](#)

Application Information

Molecular Weight: Predicted, 121 kDa, observed, 121 kDa Clonality: Rabbit monoclonal antibody Clone ID: 23GB4180 Species Reactivity: Human, Mouse, Rat Applications Tested: Western Blotting (WB), Immunocytochemistry (IC)

Immunogen

A synthesized peptide derived from human SPINK5 / LEKTI

Isotype

Rabbit IgG

Storage Buffer

Supplied in PBS (pH 7.4) containing 50% glycerol, and 0.02% sodium azide.

Storage

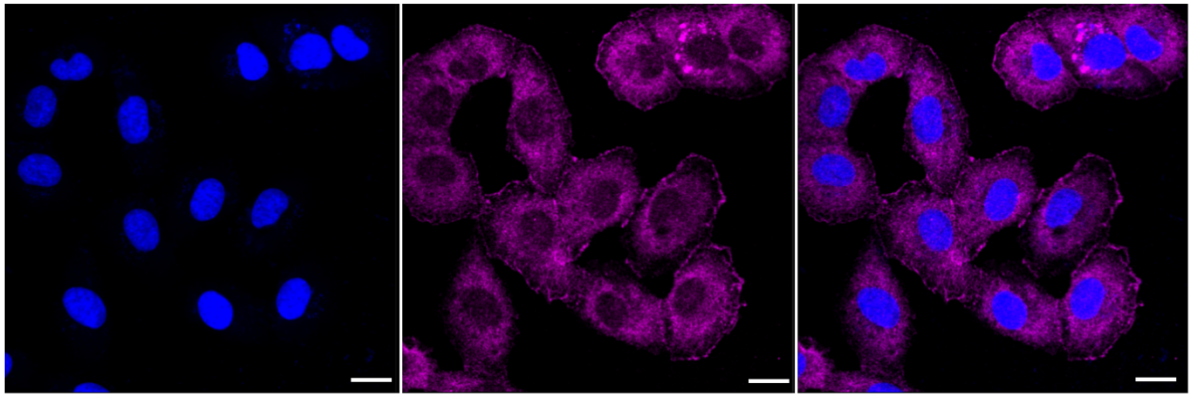
Store at -20 °C for one year.

Recommended Dilutions

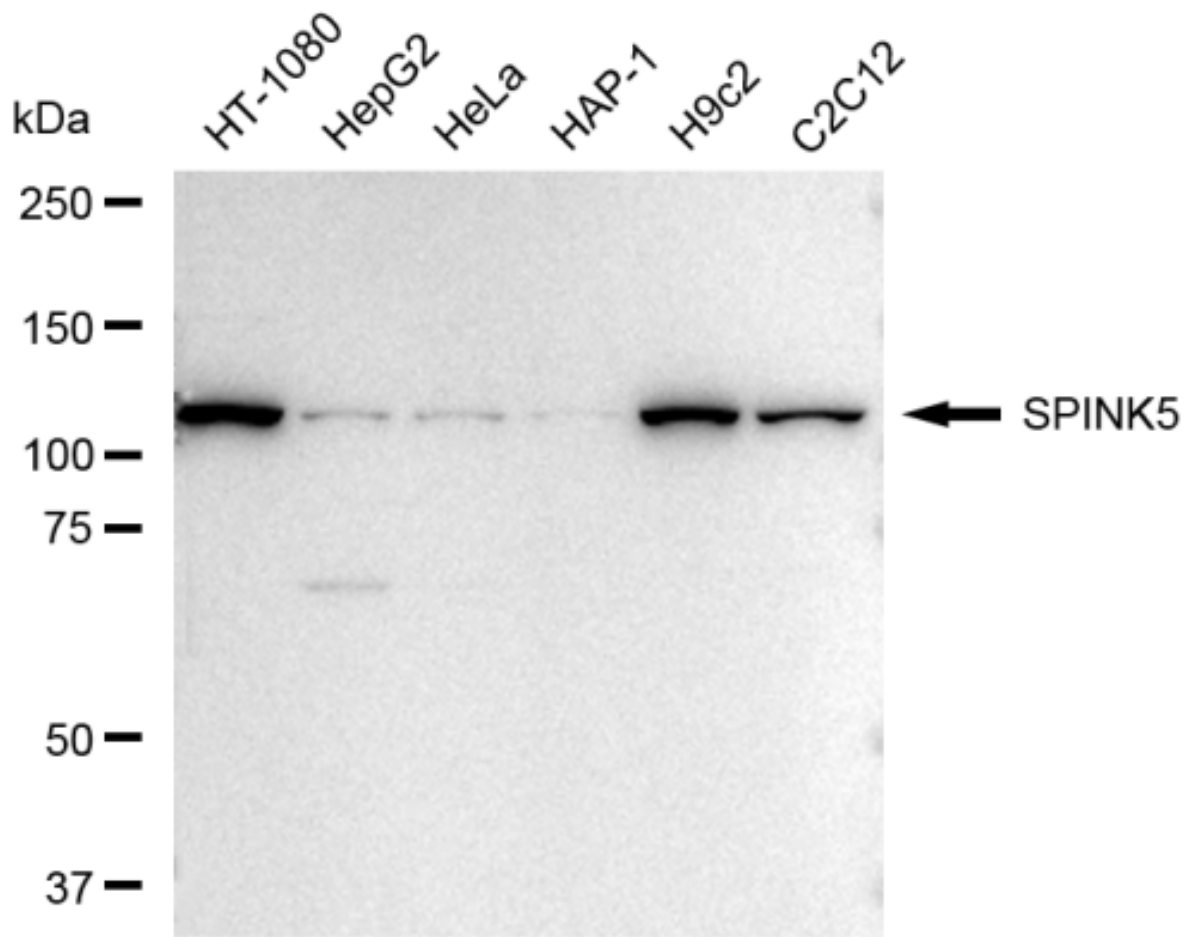
Western Blotting (WB): 1:1,000-1:5,000 Immunocytochemistry (IC): 1:1,000

Protocols

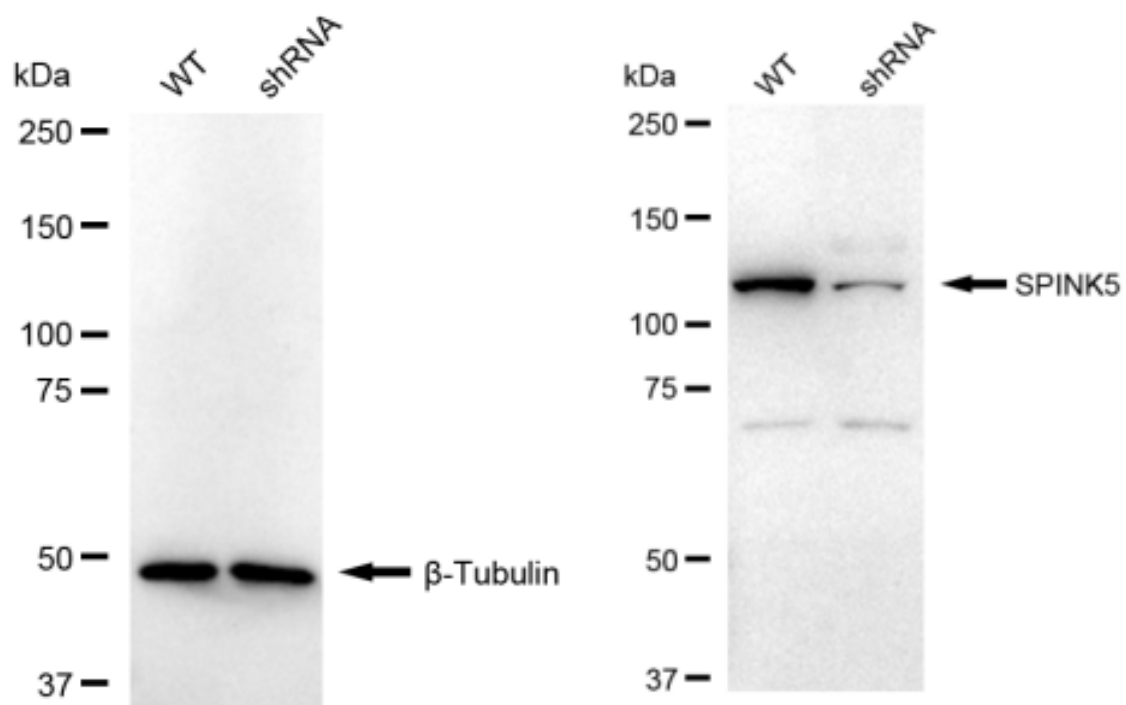
For general and specific antibody protocols please visit our website. Read all instructions before using this product.



Immunocytochemical staining of HT-1080 cells with SPINK5 antibody 1:1,000. Nuclei were stained blue with DAPI; SPINK5 was stained magenta with Alexa Fluor® 647. Images were taken using Leica stellaris 5. Protein abundance based on laser Intensity and smart gain: Medium. Scale bar: 20 μ m.



Western blotting analysis using anti-SPINK5 antibody 1:5,000 and HRP-conjugated goat anti-rabbit secondary antibody 1:20,000 respectively. Image was developed using FeQ™ ECL Substrate Kit .



Western blotting analysis using anti-SPINK5 antibody 1:5,000 and HRP-conjugated goat anti-rabbit secondary antibody 1:20,000 respectively. Image was developed using FeQ™ ECL Substrate Kit .