



SunLong Biotech Co.,LTD
Tel: 0086-571- 56623320 Fax:0086-571- 56623318
E-mail:sales@sunlongbiotech.com
www.sunlongbiotech.com

[KD-Validated] Anti-SRY-Box Transcription Factor 9 Rabbit Monoclonal Antibody

Cat No.: KD-10831

Aliases:

SOX9; SRY-Box Transcription Factor 9; SRA1; Transcription Factor SOX-9; SRY-Box 9; CMPD1; CMD1; Campomelic Dysplasia, Autosomal Sex-Reversal; SRY (Sex-Determining Region Y)-Box 9 Protein; SRY (Sex Determining Region Y)-Box 9; SRY (Sex Determining Region Y)-Box9; SRY-Related HMG-Box, Gene 9; SRXY10; SRXX2

Background:

UniProt Entry: [P48436](#);NCBI Gene Entry: [6662](#)

Application Information

Molecular Weight: Predicted, 56 kDa, observed, 70 kDa Clonality: Rabbit monoclonal antibody Clone ID: 24GB2000 Species Reactivity: Human, Mouse, Rat Applications Tested: Western Blotting (WB), Flow Cytometry (FCM)

Immunogen

A synthesized peptide derived from human SOX9

Isotype

Rabbit IgG

Storage Buffer

Supplied in PBS (pH 7.4) containing 50% glycerol, and 0.02% sodium azide.

Storage

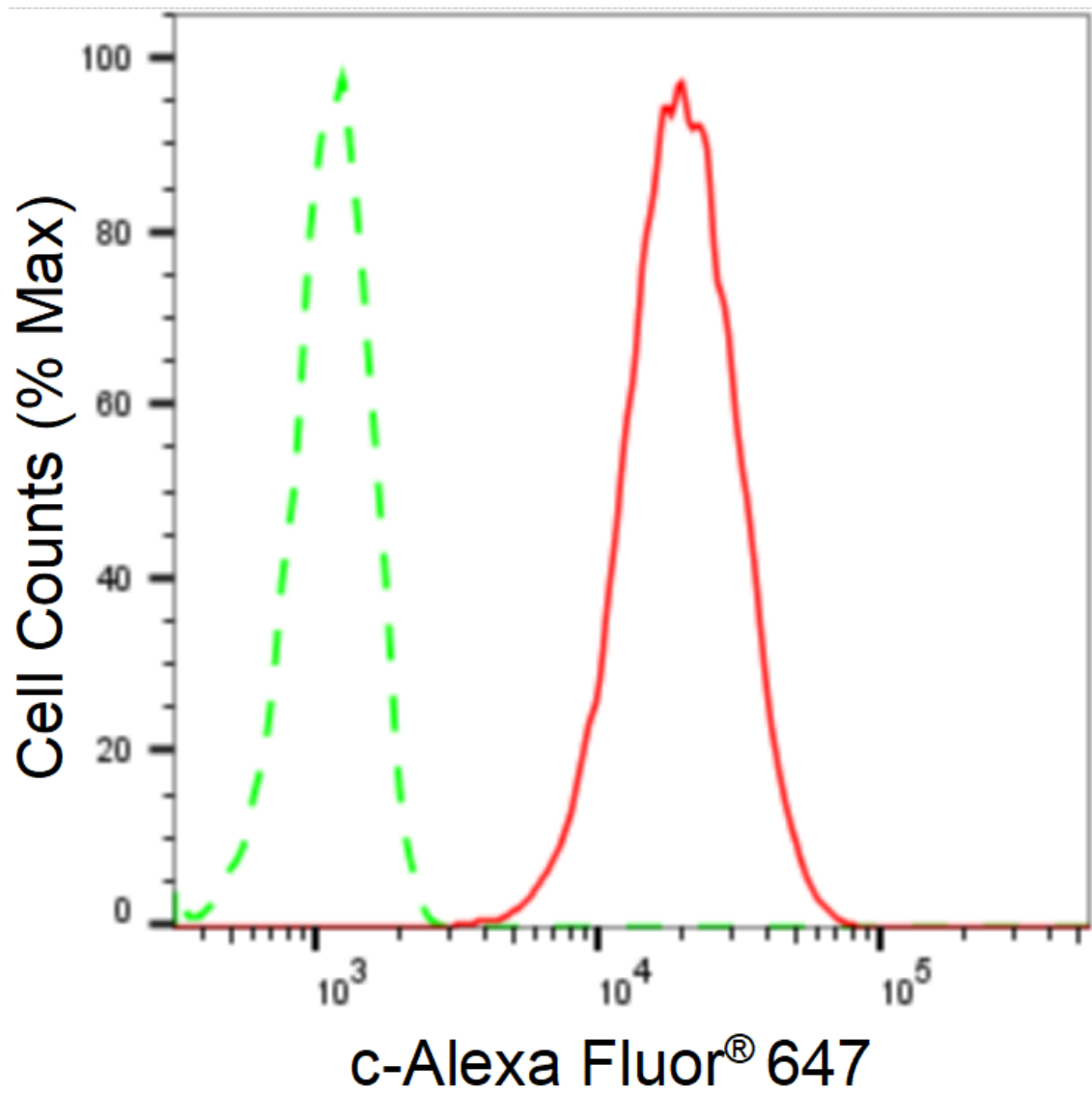
Store at -20 °C for one year.

Recommended Dilutions

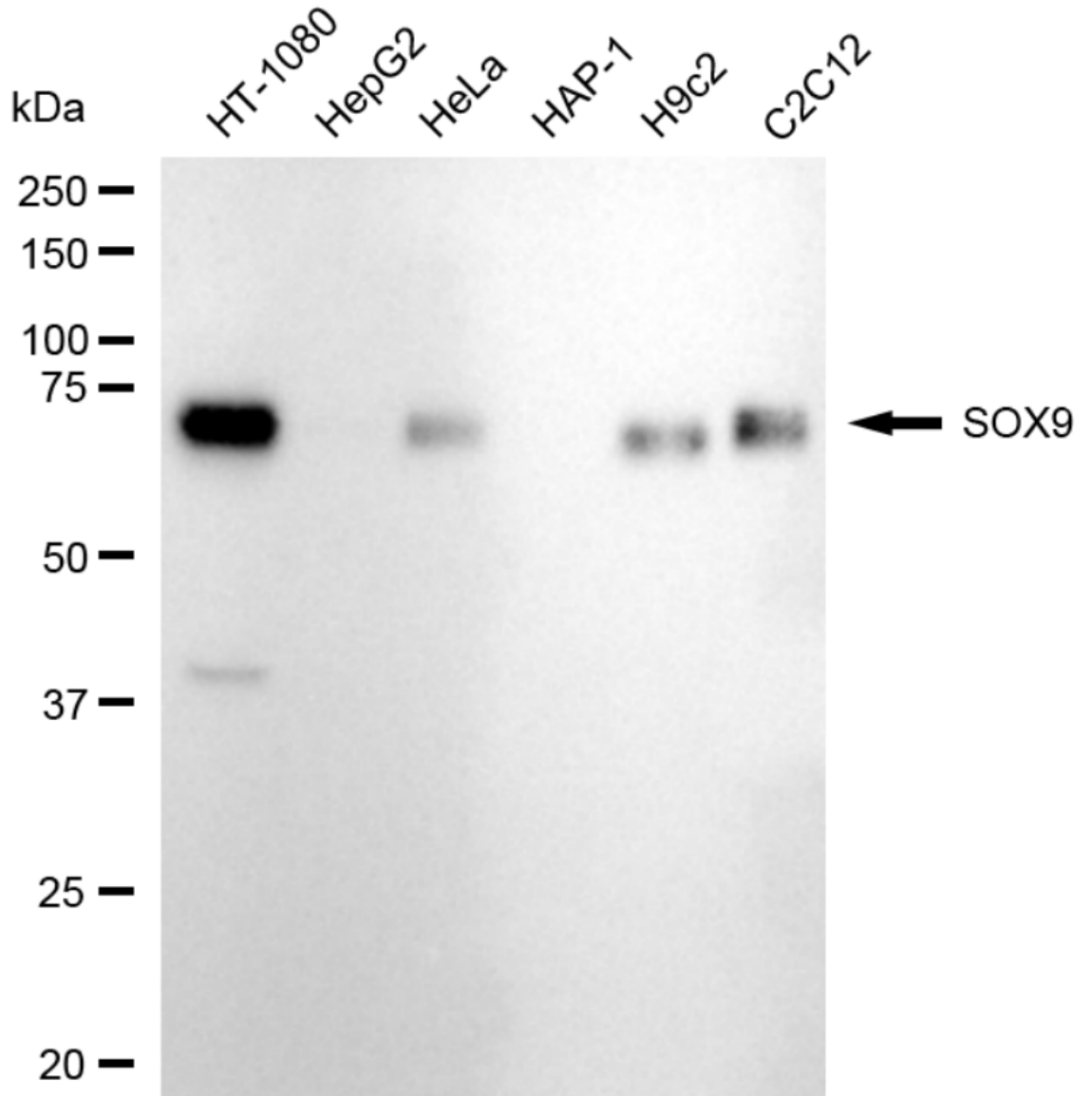
Western Blotting (WB): 1:1,000-1:5,000 Flow Cytometry (FCM): 1:2,000

Protocols

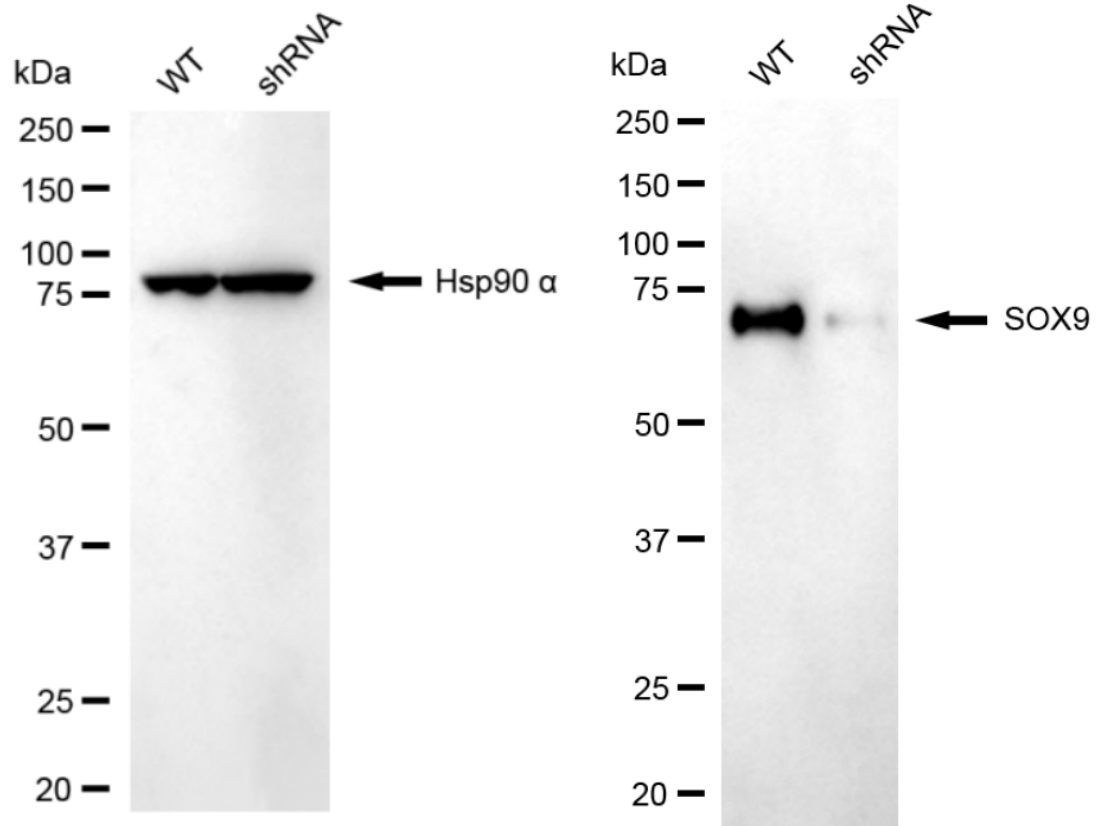
For general and specific antibody protocols please visit our website. Read all instructions before using this product.



Flow cytometric analysis of SOX9 expression in HT-1080 cells using anti-SOX9 antibody 1:2,000. Green, isotype control; red, SOX9.



Western blotting analysis using anti-SOX9 antibody 1:5,000 and HRP-conjugated goat anti-rabbit secondary antibody 1:20,000 respectively. Image was developed using FeQ™ ECL Substrate Kit .



Western blotting analysis using anti-SOX9 antibody 1:5,000 and HRP-conjugated goat anti-rabbit secondary antibody 1:20,000 respectively. Image was developed using NaQ™ ECL Substrate Kit .