



SunLong Biotech Co.,LTD
Tel: 0086-571- 56623320 Fax:0086-571- 56623318
E-mail:sales@sunlongbiotech.com
www.sunlongbiotech.com

[KD-Validated] Anti-Synaptosome Associated Protein 29 Rabbit Monoclonal Antibody

Cat No.: KD-10825

Aliases:

SNAP29; Synaptosome Associated Protein 29; SNAP-29; Soluble 29 KDa NSF Attachment Protein; CEDNIK; Cerebral Dysgenesis, Neuropathy, Ichthyosis And Keratoderma Syndrome; Vesicle-Membrane Fusion Protein SNAP-29; Synaptosomal-Associated Protein, 29kDa; Synaptosomal-Associated Protein 29; Synaptosomal-Associated Protein, 29kD; Synaptosome Associated Protein 29kDa

Background:

UniProt Entry: [O95721](#);NCBI Gene Entry: [9342](#)

Application Information

Molecular Weight: Predicted, 29 kDa, observed, 27 kDa Clonality: Rabbit monoclonal antibody Clone ID: 24GB1855 Species Reactivity: Human, Mouse, Rat Applications Tested: Western Blotting (WB), Flow Cytometry (FCM), Immunocytochemistry (IC)

Immunogen

A synthesized peptide derived from human SNAP29

Isotype

Rabbit IgG

Storage Buffer

Supplied in PBS (pH 7.4) containing 50% glycerol, and 0.02% sodium azide.

Storage

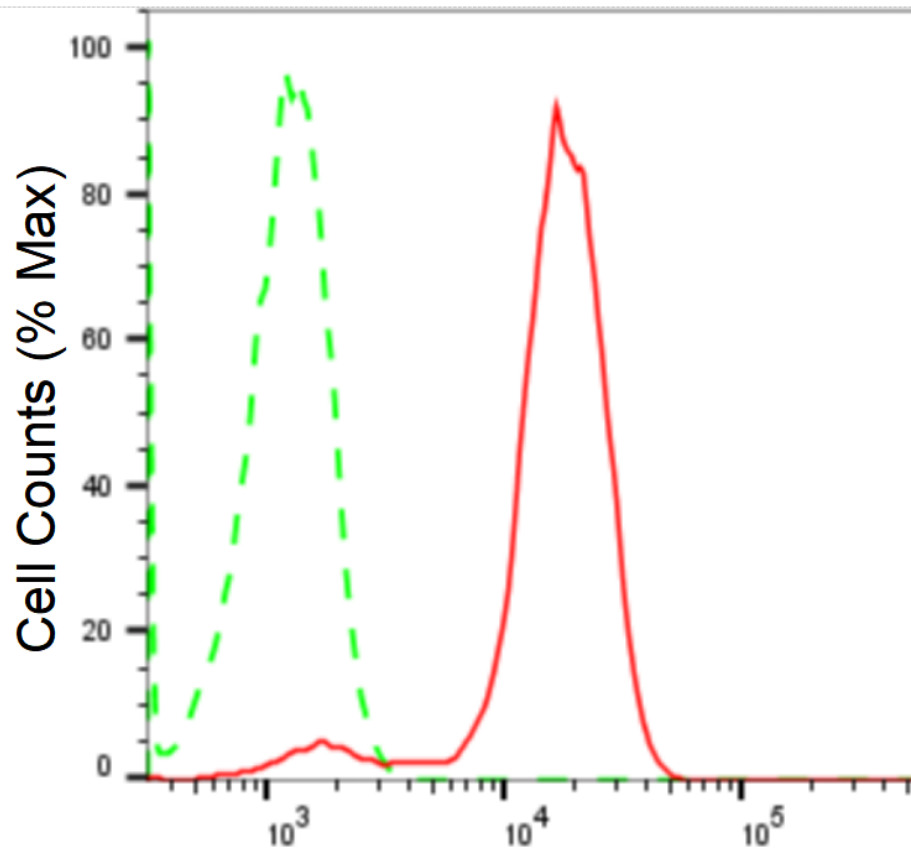
Store at -20 °C for one year.

Recommended Dilutions

Western Blotting (WB): 1:1,000-1:5,000 Flow Cytometry (FCM): 1:2,000
Immunocytochemistry (IC): 1:1,000

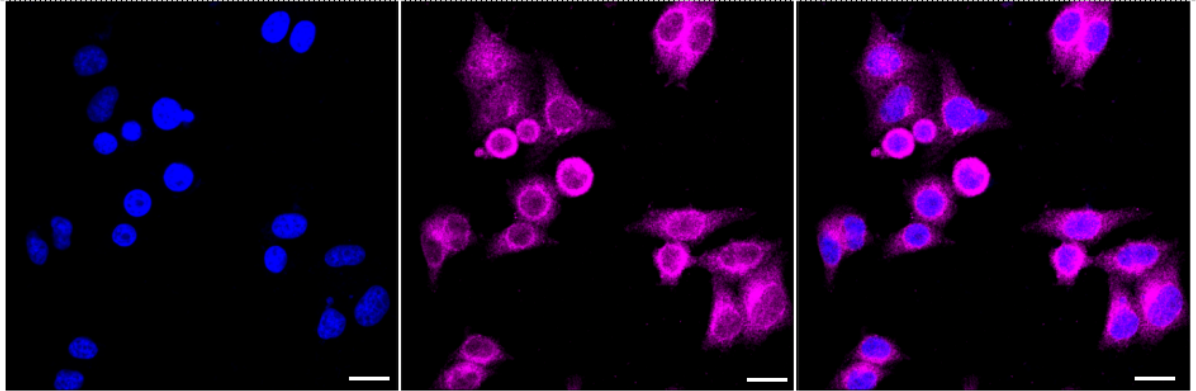
Protocols

For general and specific antibody protocols please visit our website. Read all instructions before using this product.

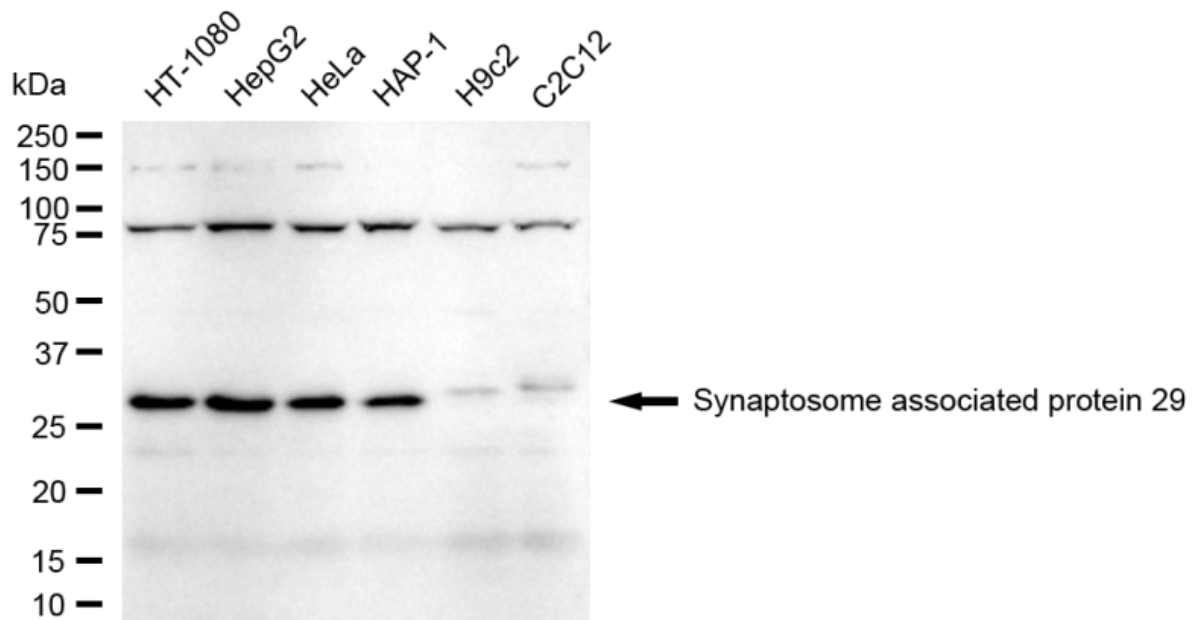


Synaptosome associated protein 29-Alexa Fluor[®] 647

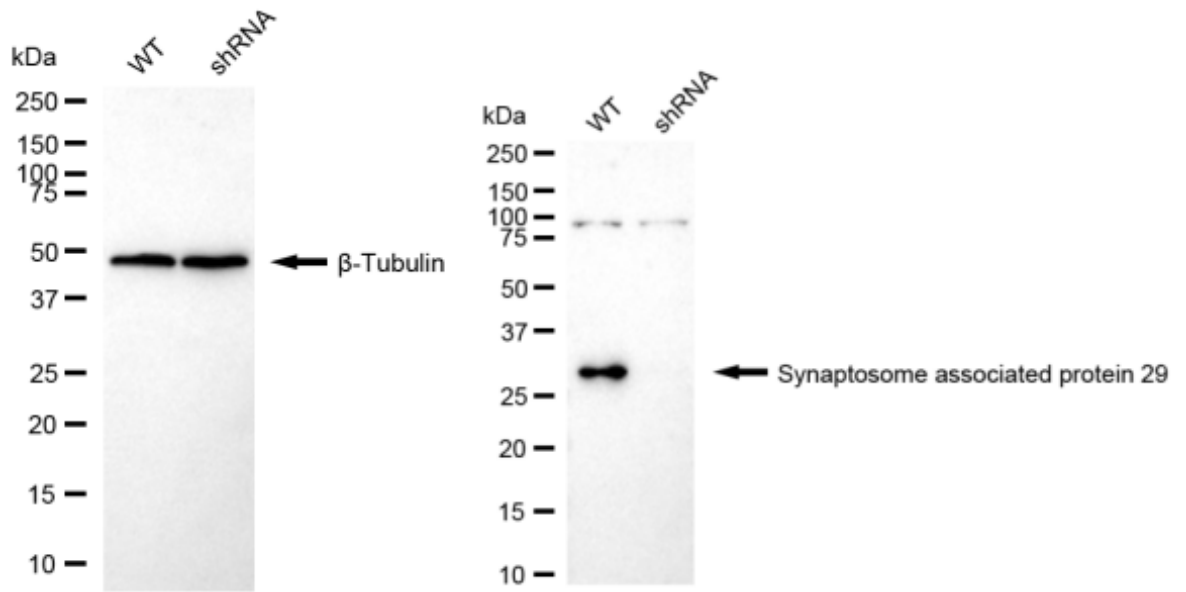
Flow cytometric analysis of Synaptosome associated protein 29 expression in HepG2 cells using anti-Synaptosome associated protein 29 antibody 1:2,000. Green, isotype control; red, Synaptosome associated protein 29.



Immunocytochemical staining of HepG2 cells with anti-Synaptosome associated protein 29 antibody 1:1,000. Nuclei were stained blue with DAPI; Synaptosome associated protein 29 was stained magenta with Alexa Fluor® 647. Images were taken using Leica stellaris 5. Protein abundance based on laser Intensity and smart gain: Medium. Scale bar: 20 μ m.



Western blotting analysis using anti-Synaptosome associated protein 29 antibody 1:5,000 and HRP-conjugated goat anti-rabbit secondary antibody 1:20,000 respectively. Image was developed using FeQ™ ECL Substrate Kit .



Western blotting analysis using anti-Synaptosome associated protein 29 antibody 1:5,000 and HRP-conjugated goat anti-rabbit secondary antibody 1:20,000 respectively. Image was developed using NaQ™ ECL Substrate Kit .