



SunLong Biotech Co.,LTD
Tel: 0086-571- 56623320 Fax:0086-571- 56623318
E-mail:sales@sunlongbiotech.com
www.sunlongbiotech.com

[KD-Validated] Anti-Synaptosome Associated Protein 25 Rabbit Monoclonal Antibody

Cat No.: KD-10824

Aliases:

SNAP25; Synaptosome Associated Protein 25; SNAP-25; DJ1068F16.2; BA416N4.2; RIC-4; RIC4; SEC9; SNAP; Resistance To Inhibitors Of Cholinesterase 4 Homolog; Synaptosomal-Associated Protein, 25kDa; Synaptosomal-Associated Protein 25; SUP; Synaptosomal-Associated 25 KDa Protein; Synaptosome Associated Protein 25kDa; Super Protein; CMS18

Background:

UniProt Entry: [P60880](#);NCBI Gene Entry: [6616](#)

Application Information

Molecular Weight: Predicted, 23 kDa, observed, 25 kDa Clonality: Rabbit monoclonal antibody Clone ID: 24GB2640 Species Reactivity: Human Applications Used: Western Blotting (WB)

Immunogen

A synthesized peptide derived from human SNAP25

Isotype

Rabbit IgG

Storage Buffer

Supplied in PBS (pH 7.4) containing 50% glycerol, and 0.02% sodium azide.

Storage

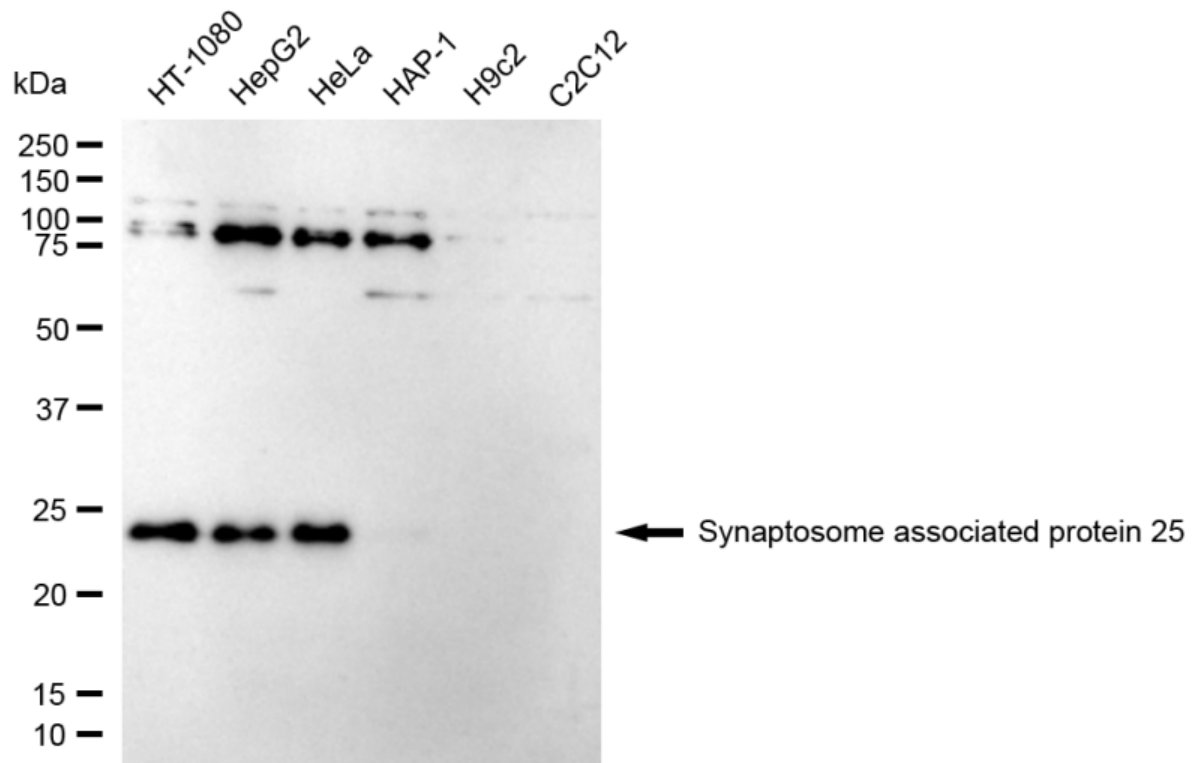
Store at -20 °C for one year.

Recommended Dilutions

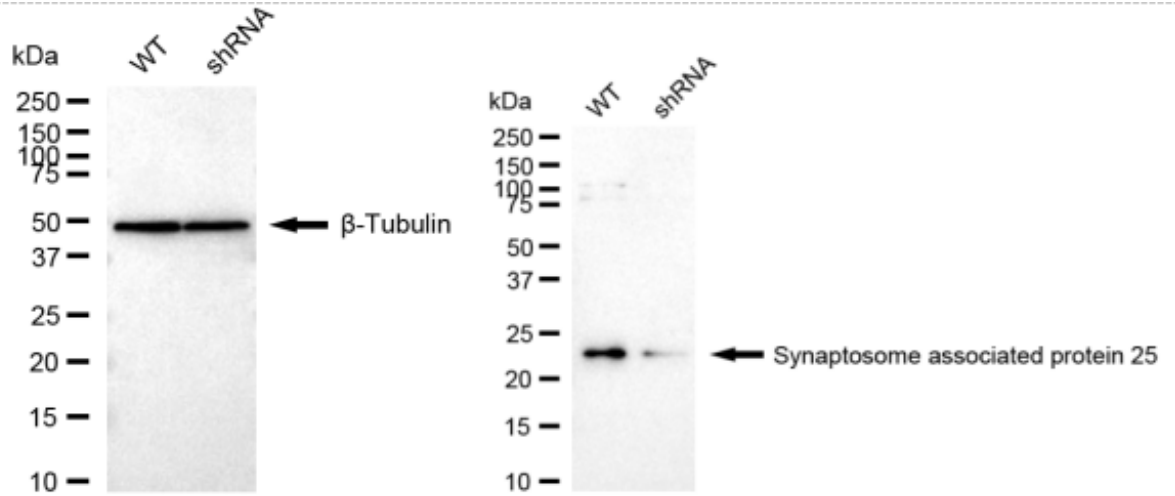
Western Blotting (WB): 1:1,000-1:5,000

Protocols

For general and specific antibody protocols please visit our website. Read all instructions before using this product.



Western blotting analysis using anti-Synaptosome associated protein 25 antibody 1:5,000 and HRP-conjugated goat anti-rabbit secondary antibody 1:20,000 respectively. Image was developed using FeQ™ ECL Substrate Kit .



Western blotting analysis using anti-Synaptosome associated protein 25 antibody 1:5,000 and HRP-conjugated goat anti-rabbit secondary antibody 1:20,000 respectively. Image was developed using NaQ™ ECL Substrate Kit .