



SunLong Biotech Co.,LTD
Tel: 0086-571- 56623320 Fax:0086-571- 56623318
E-mail:sales@sunlongbiotech.com
www.sunlongbiotech.com

[KD-Validated] Anti-Spermine synthase Rabbit Monoclonal Antibody

Cat No.: KD-10822

Aliases:

SMS; Spermine Synthase; SPMSY; MRSR; Spermidine Aminopropyltransferase; SpS;
SRS; Snyder-Robinson X-Linked Mental Retardation Syndrome; EC 2.5.1.22; MRXSSR;
SPS

Background:

UniProt Entry: [P52788](#);NCBI Gene Entry: [6611](#)

Application Information

Molecular Weight: Predicted, 41 kDa, observed, 41 kDa Clonality: Rabbit monoclonal
antibody Clone ID: 23GB4640 Species Reactivity: Human Applications: Western
Blotting (WB), Flow Cytometry (FCM), Immunocytochemistry (IC)

Immunogen

A synthesized peptide derived from human Spermine synthase

Isotype

Rabbit IgG

Storage Buffer

Supplied in PBS (pH 7.4) containing 50% glycerol, and 0.02% sodium azide.

Storage

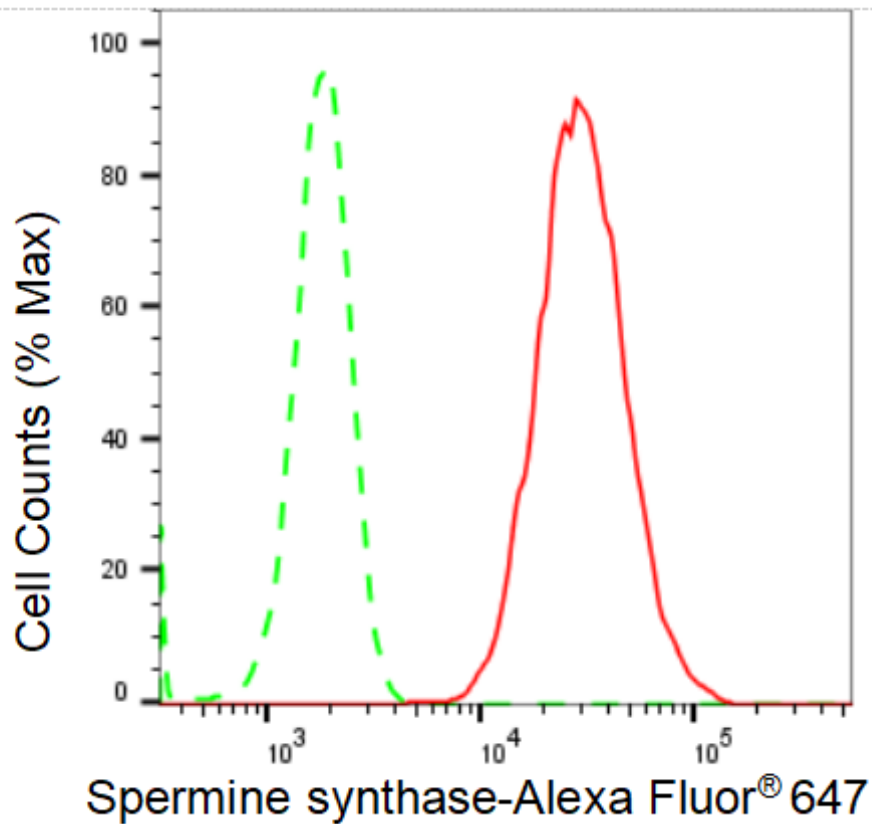
Store at -20 °C for one year.

Recommended Dilutions

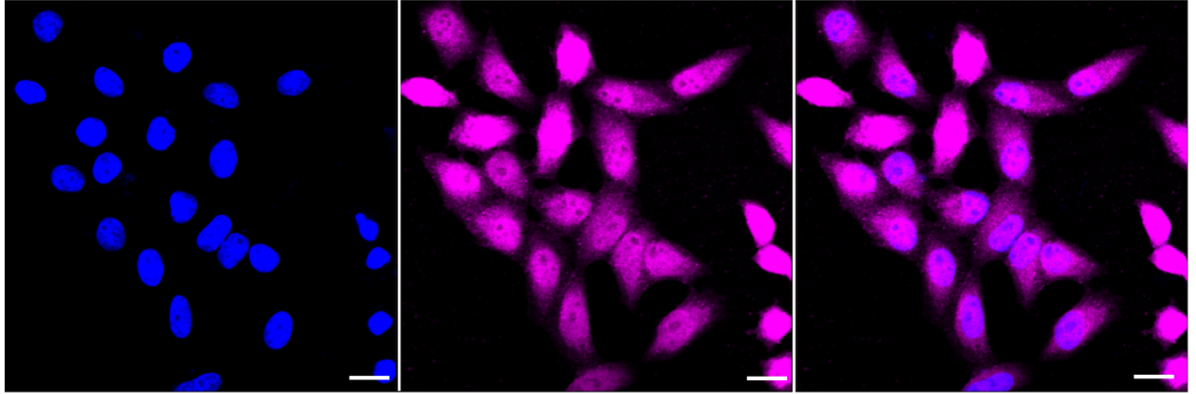
Western Blotting (WB): 1:1,000-1:5,000 Flow Cytometry (FCM): 1:2,000
Immunocytochemistry (IC): 1:1,000

Protocols

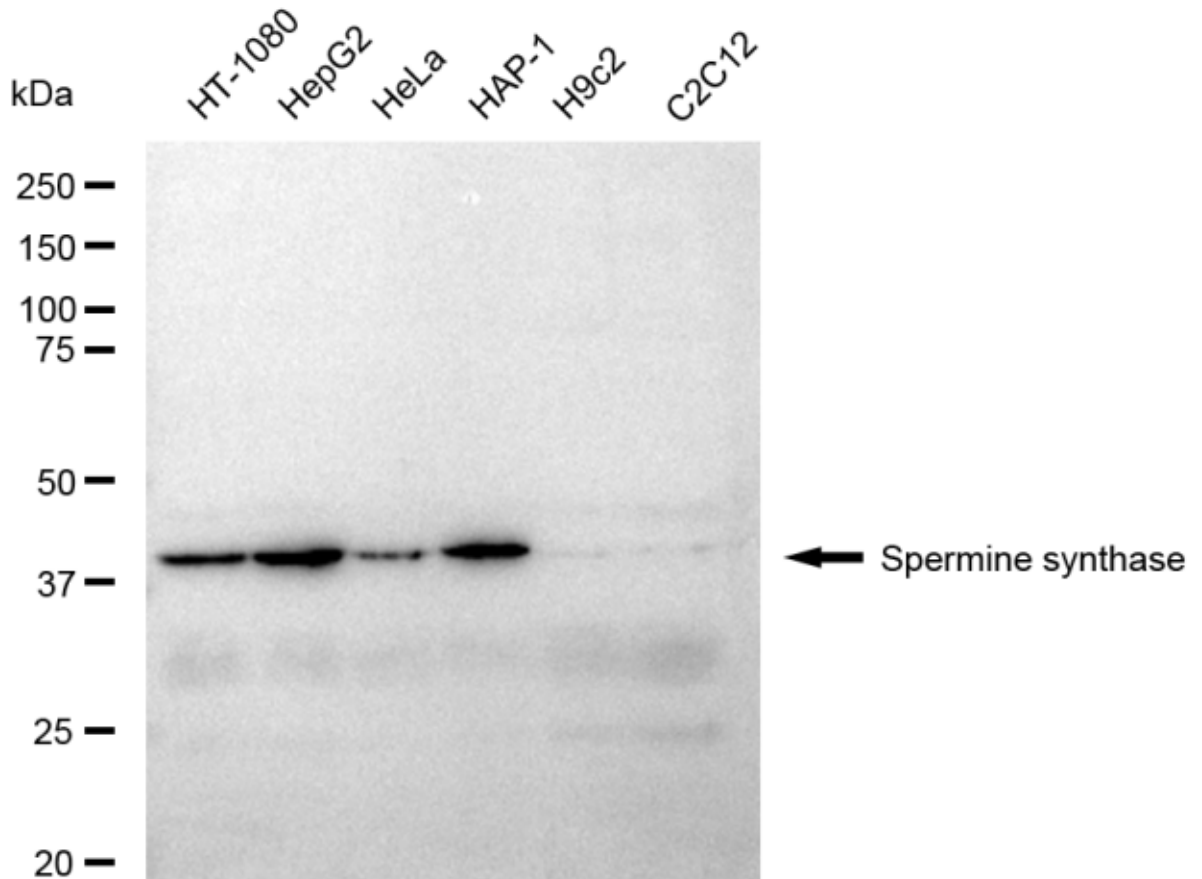
For general and specific antibody protocols please visit our website. Read all instructions before using this product.



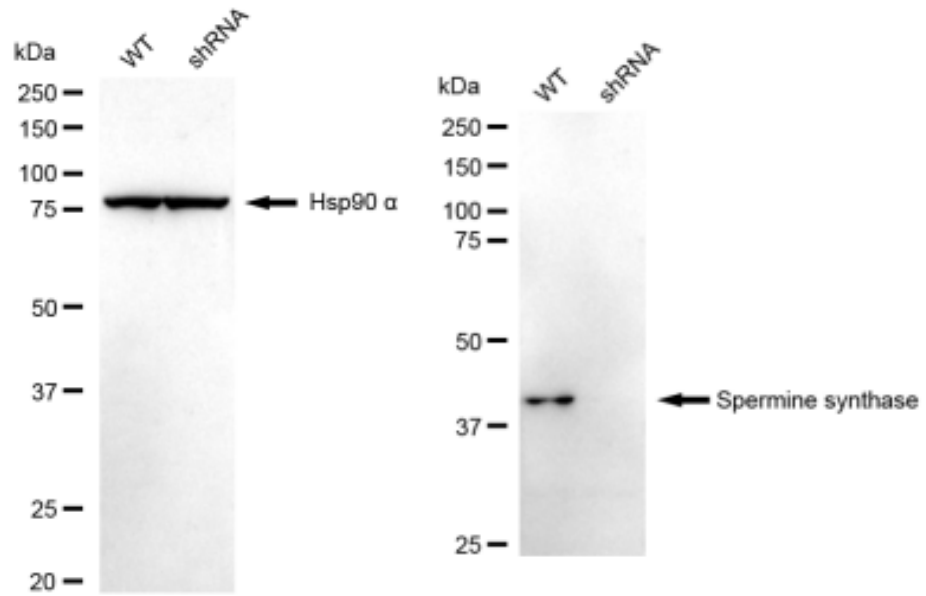
Flow cytometric analysis of Spermine synthase expression in HepG2 cells using Spermine synthase antibody 1:2,000. Green, isotype control; red, Spermine synthase



Immunocytochemical staining of HepG2 cells with Spermine synthase antibody 1:1,000. Nuclei were stained blue with DAPI; Spermine synthase was stained magenta with Alexa Fluor® 647. Images were taken using Leica stellaris 5. Protein abundance based on laser Intensity and smart gain: Medium. Scale bar: 20 μ m.



Western blotting analysis using anti-Spermine synthase antibody 1:5,000 and HRP-conjugated goat anti-rabbit secondary antibody 1:20,000 respectively. Image was developed using FeQ™ ECL Substrate Kit .



Western blotting analysis using anti-Spermine synthase antibody 1:5,000 and HRP-conjugated goat anti-rabbit secondary antibody 1:20,000 respectively. Image was developed using FeQ™ ECL Substrate Kit .