



SunLong Biotech Co.,LTD  
Tel: 0086-571- 56623320 Fax:0086-571- 56623318  
E-mail:sales@sunlongbiotech.com  
www.sunlongbiotech.com

## **[KD-Validated] Anti-SMCHD1 Rabbit Monoclonal Antibody**

Cat No.: KD-10821

### **Aliases:**

SMCHD1; Structural Maintenance Of Chromosomes Flexible Hinge Domain Containing 1; KIAA0650; FSHD2; Structural Maintenance Of Chromosomes Flexible Hinge Domain-Containing Protein 1; SMC Hinge Domain-Containing Protein 1; EC 3.6.1.-; BAMS

### **Background:**

UniProt Entry: [A6NHR9](#);NCBI Gene Entry: [23347](#)

### **Application Information**

Molecular Weight: Predicted, 226 kDa, observed, 226 kDa Clonality: Rabbit monoclonal antibody Clone ID: 24GB2385 Spncies Reactivity: Human, Rat Applications Tested: Western Blotting (WB), Immunocytochemistry (IC)

### **Immunogen**

A synthesized peptide derived from human SMCHD1

### **Isotype**

Rabbit IgG

### **Storage Buffer**

Supplied in PBS (pH 7.4) containing 50% glycerol, and 0.02% sodium azide.

### Storage

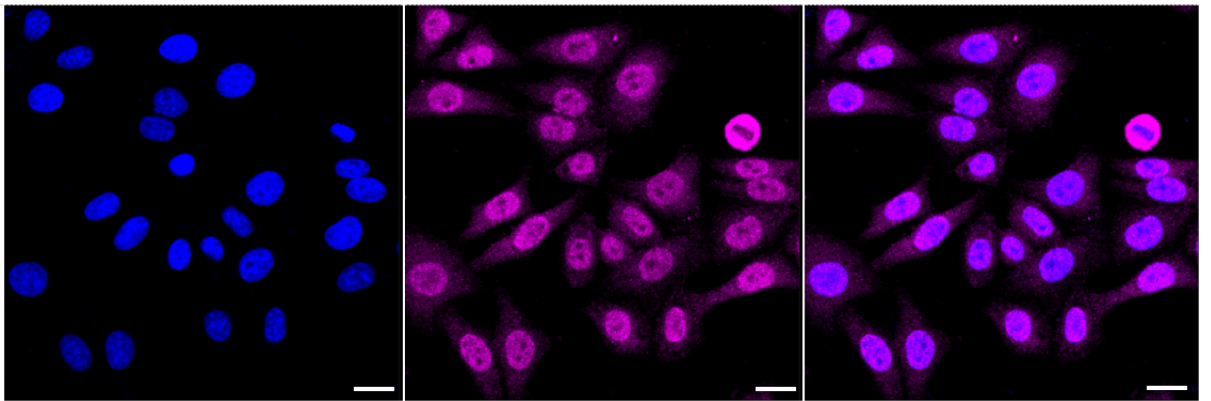
Store at -20 °C for one year.

### Recommended Dilutions

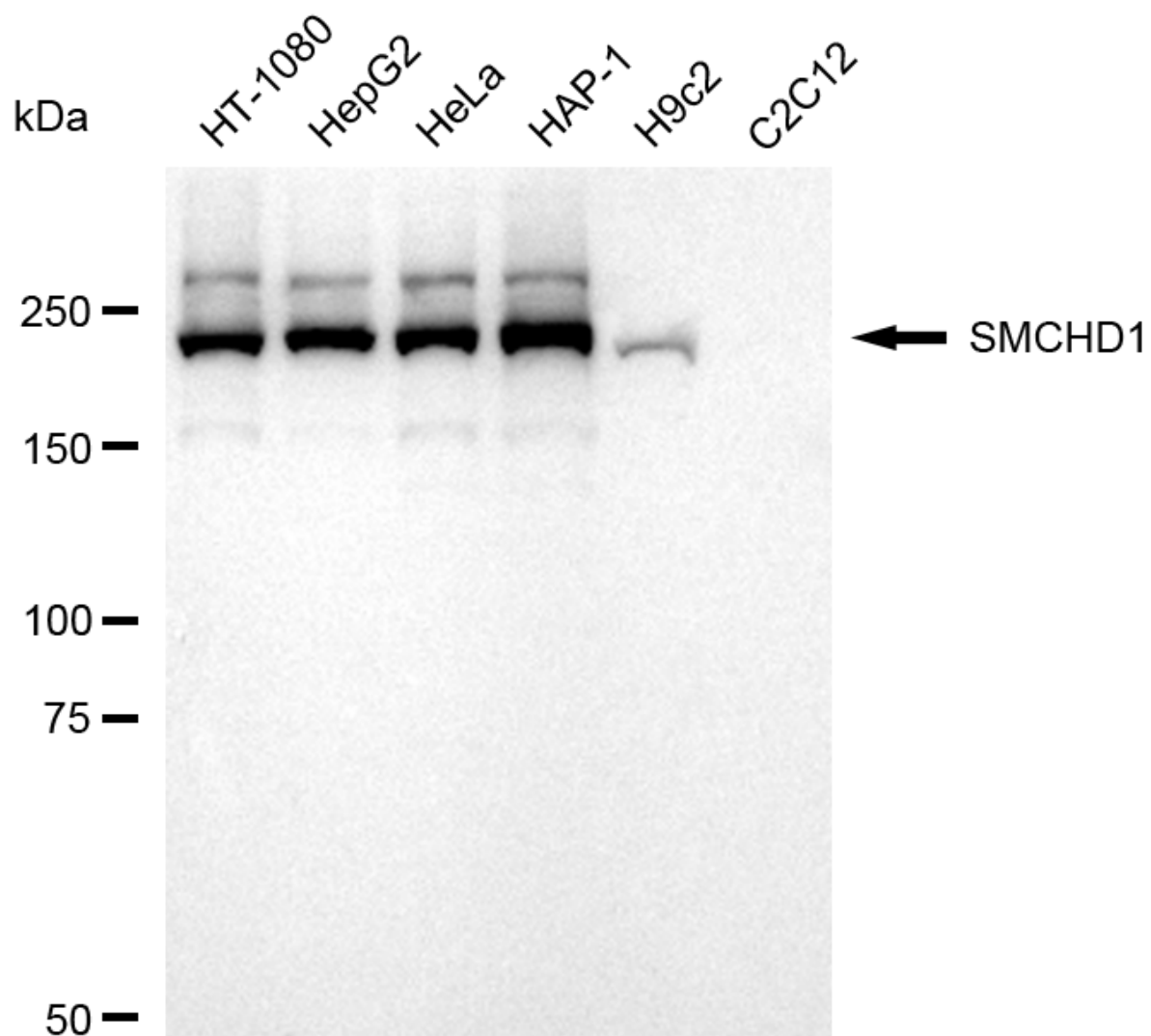
Western Blotting (WB): 1:1,000-1:5,000 Immunocytochemistry (IC): 1:1,000

### Protocols

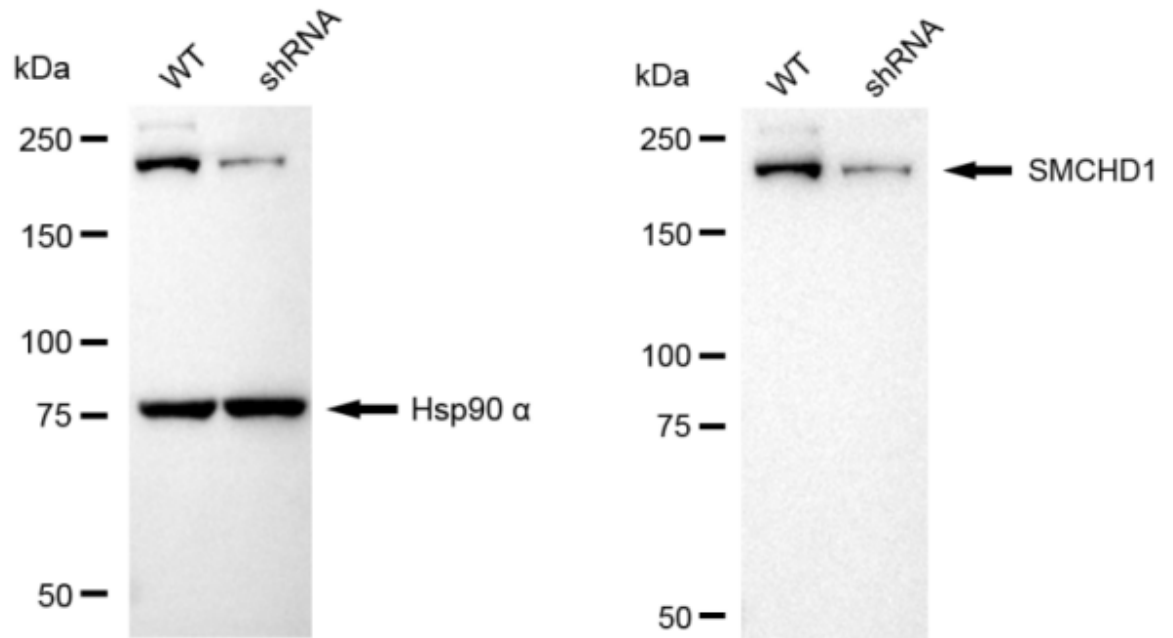
For general and specific antibody protocols please visit our website. Read all instructions before using this product.



Immunocytochemical staining of HepG2 cells with anti-SMCHD1 antibody 1:1,000. Nuclei were stained blue with DAPI; SMCHD1 was stained magenta with Alexa Fluor® 647. Images were taken using Leica stellaris 5. Protein abundance based on laser Intensity and smart gain: Medium. Scale bar: 20 µm.



Western blotting analysis using anti-SMCHD1 antibody 1:5,000 and HRP-conjugated goat anti-rabbit secondary antibody 1:20,000 respectively. Image was developed using FeQ™ ECL Substrate Kit .



Western blotting analysis using anti-SMCHD1 antibody 1:5,000 and HRP-conjugated goat anti-rabbit secondary antibody 1:20,000 respectively. Image was developed using NaQ™ ECL Substrate Kit .