



SunLong Biotech Co.,LTD
Tel: 0086-571- 56623320 Fax:0086-571- 56623318
E-mail:sales@sunlongbiotech.com
www.sunlongbiotech.com

[KD-Validated] Anti-SMC4 Rabbit Monoclonal Antibody

Cat No.: KD-10820

Aliases:

SMC4; Structural Maintenance Of Chromosomes 4; HCAP-C; SMC4L1; CAP-C; Structural Maintenance Of Chromosomes Protein 4; Chromosome-Associated Polypeptide C; SMC Protein 4; SMC-4; CAPC; SMC4 (Structural Maintenance Of Chromosomes 4, Yeast)-Like 1; SMC4 Structural Maintenance Of Chromosomes 4-Like 1 (Yeast); SMC4 Structural Maintenance Of Chromosomes 4-Like 1; XCAP-C Homolog

Background:

UniProt Entry: [Q9NTJ3](#);NCBI Gene Entry: [10051](#)

Application Information

Molecular Weight: Predicted, 147 kDa, observed, 180 kDa Clonality: Rabbit monoclonal antibody Clone ID: 24GB2400 Species Reactivity: Human, Mouse, Rat Applications Tested: Western Blotting (WB), Flow Cytometry (FCM)

Immunogen

A synthesized peptide derived from human SMC4

Isotype

Rabbit IgG

Storage Buffer

Supplied in PBS (pH 7.4) containing 50% glycerol, and 0.02% sodium azide.

Storage

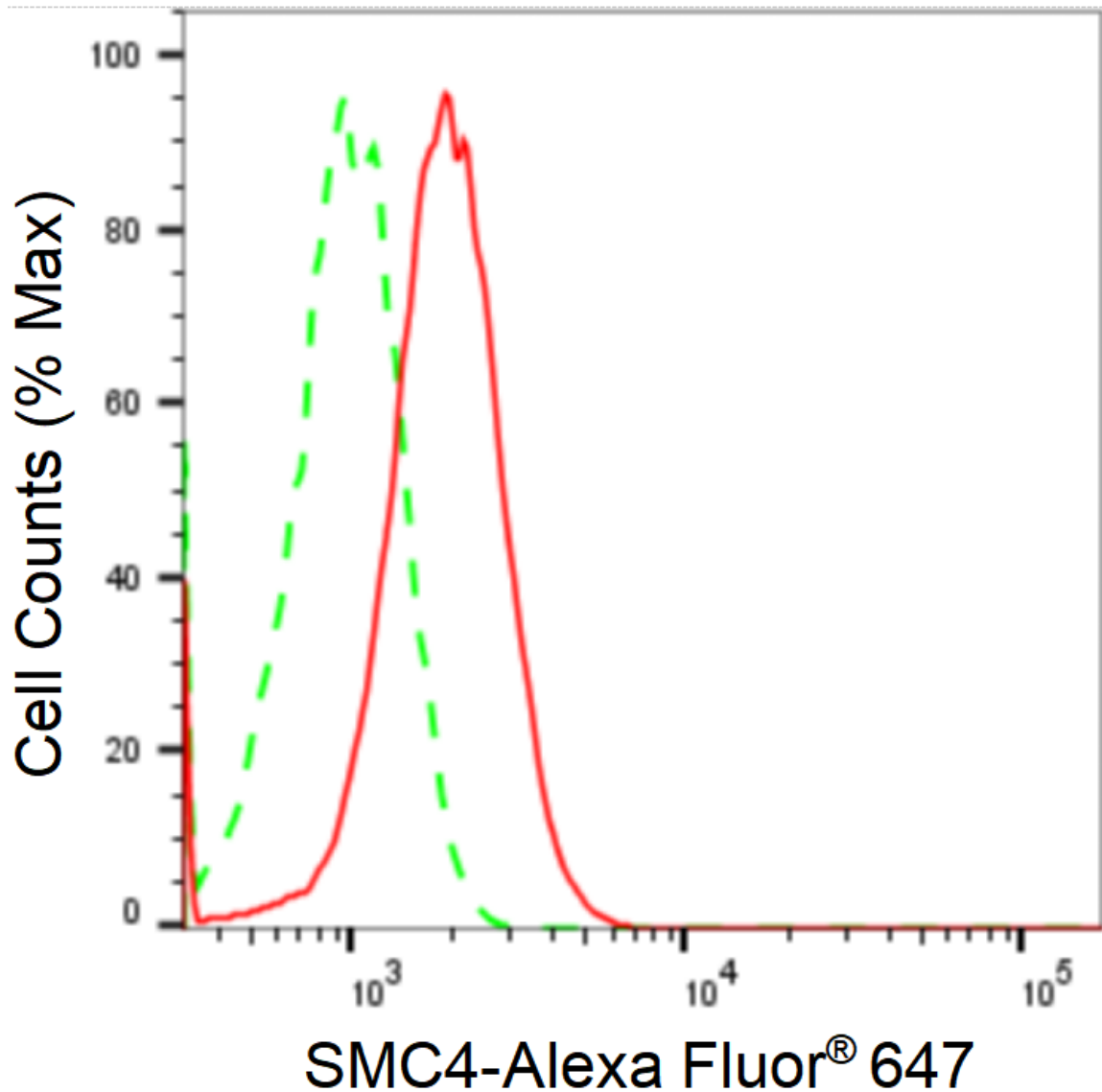
Store at -20 °C for one year.

Recommended Dilutions

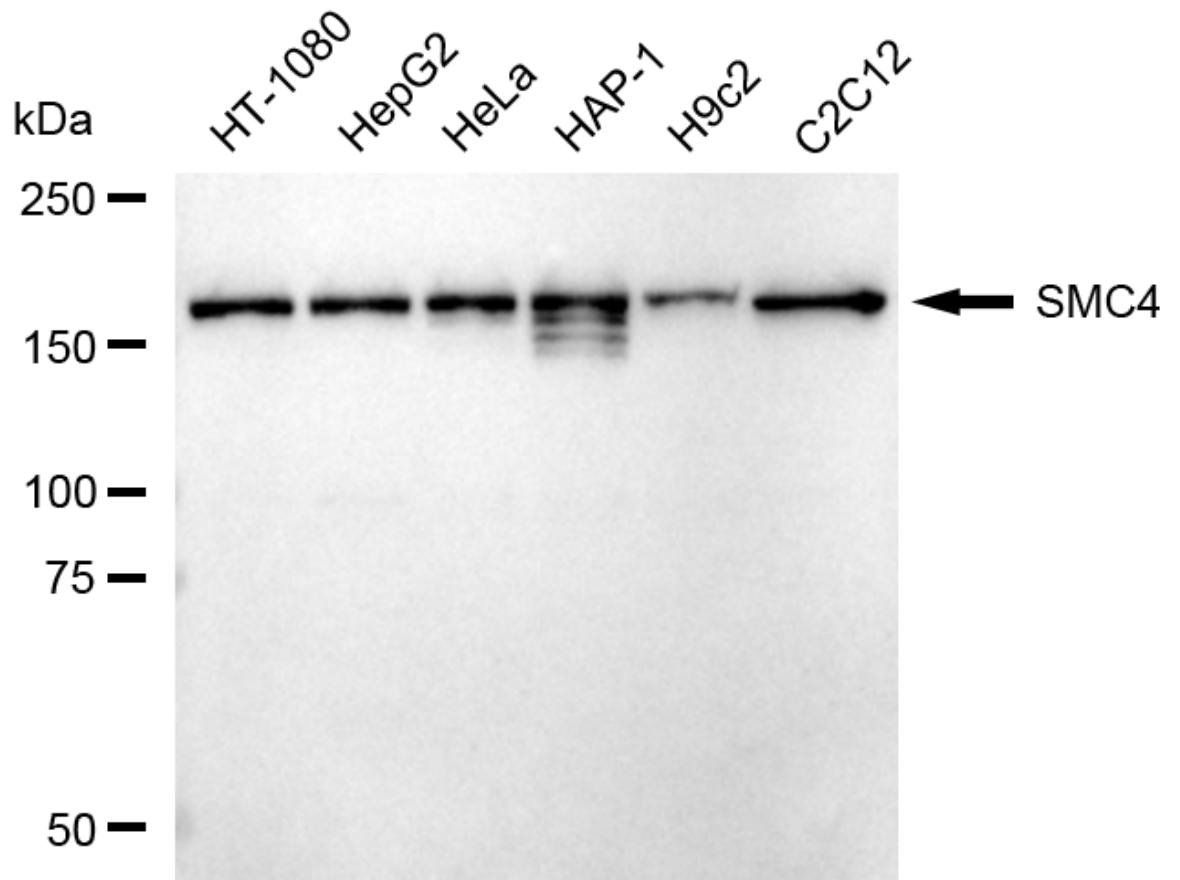
Western Blotting (WB): 1:1,000-1:5,000 Flow Cytometry (FCM): 1:2,000

Protocols

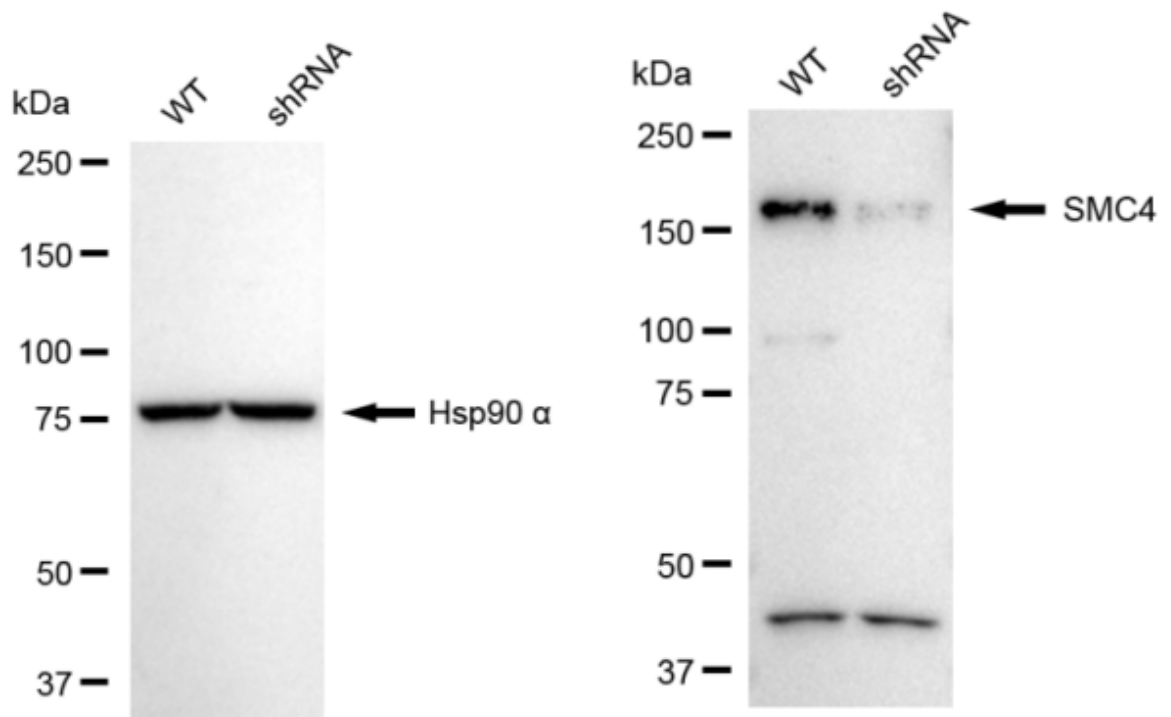
For general and specific antibody protocols please visit our website. Read all instructions before using this product.



Flow cytometric analysis of SMC4 expression in HT-1080 cells using anti-SMC4 antibody 1:2,000. Green, isotype control; red, SMC4.



Western blotting analysis using anti-SMC4 antibody 1:5,000 and HRP-conjugated goat anti-rabbit secondary antibody 1:20,000 respectively. Image was developed using FeQ™ ECL Substrate Kit .



Western blotting analysis using anti-SMC4 antibody 1:5,000 and HRP-conjugated goat anti-rabbit secondary antibody 1:20,000 respectively. Image was developed using NaQ™ ECL Substrate Kit .