



SunLong Biotech Co.,LTD
Tel: 0086-571- 56623320 Fax:0086-571- 56623318
E-mail:sales@sunlongbiotech.com
www.sunlongbiotech.com

[KD-Validated] Anti-SMC3 Rabbit Monoclonal Antibody

Cat No.: KD-10819

Aliases:

SMC3; Structural Maintenance Of Chromosomes 3; SMC3L1; HCA; BAM; Bamacan; CSPG6; Basement Membrane-Associated Chondroitin Proteoglycan; Structural Maintenance Of Chromosomes Protein 3; Chondroitin Sulfate Proteoglycan 6 (Bamacan); Chromosome-Associated Polypeptide; SMC Protein 3; BMH; Chondroitin Sulfate Proteoglycan 6; Bamacan Proteoglycan; CDLS3; SMC-3

Background:

UniProt Entry: [Q9UQE7](#);NCBI Gene Entry: [9126](#)

Application Information

Molecular Weight: Predicted, 142 kDa, observed, 141 kDa Clonality: Rabbit monoclonal antibody Clone ID: 24GB2155 Species Reactivity: Human, Mouse, Rat Applications Tested: Western Blotting (WB), Flow Cytometry (FCM), Immunocytochemistry (IC)

Immunogen

A synthesized peptide derived from human SMC3

Isotype

Rabbit IgG

Storage Buffer

Supplied in PBS (pH 7.4) containing 50% glycerol, and 0.02% sodium azide.

Storage

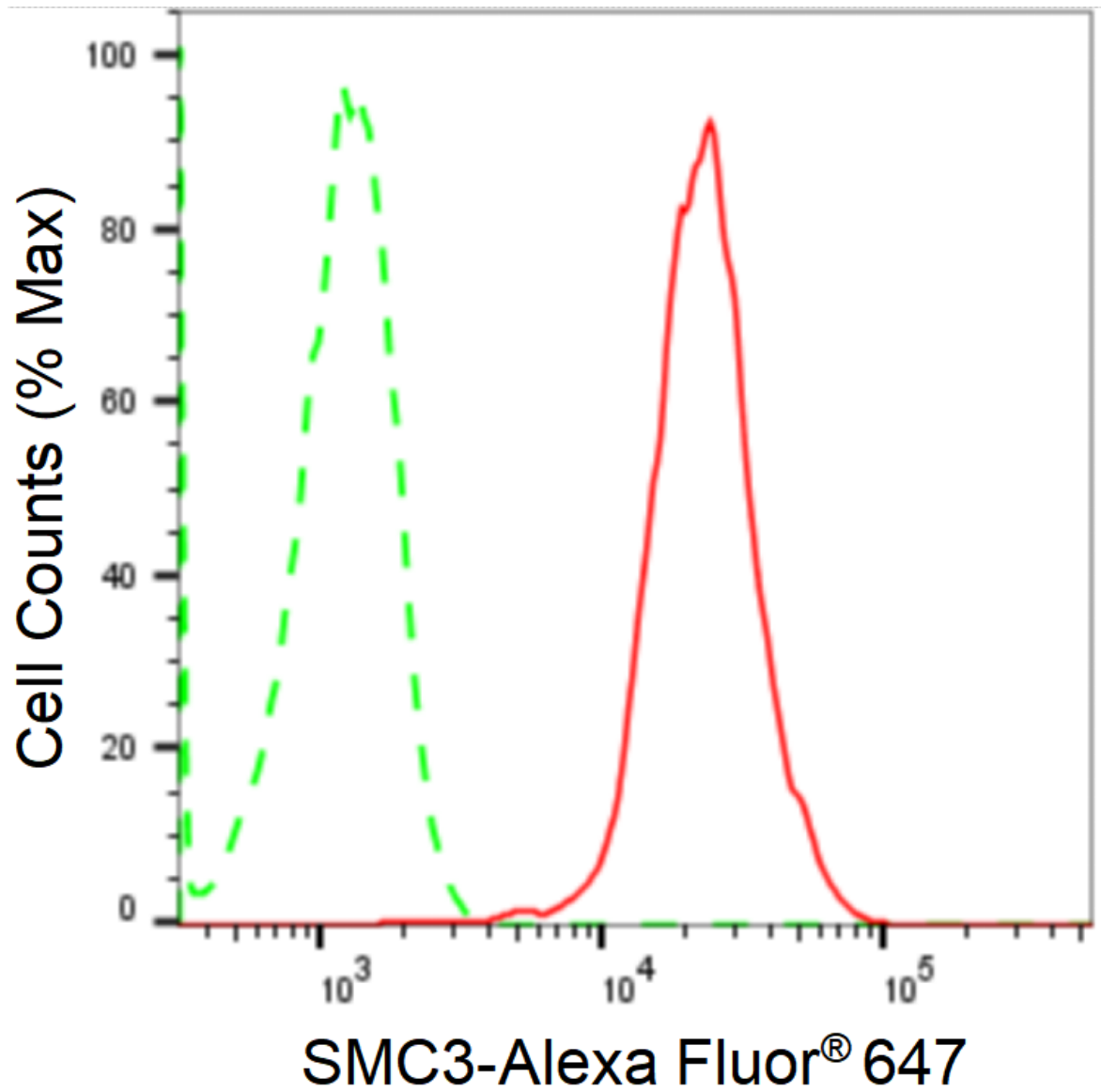
Store at -20 °C for one year.

Recommended Dilutions

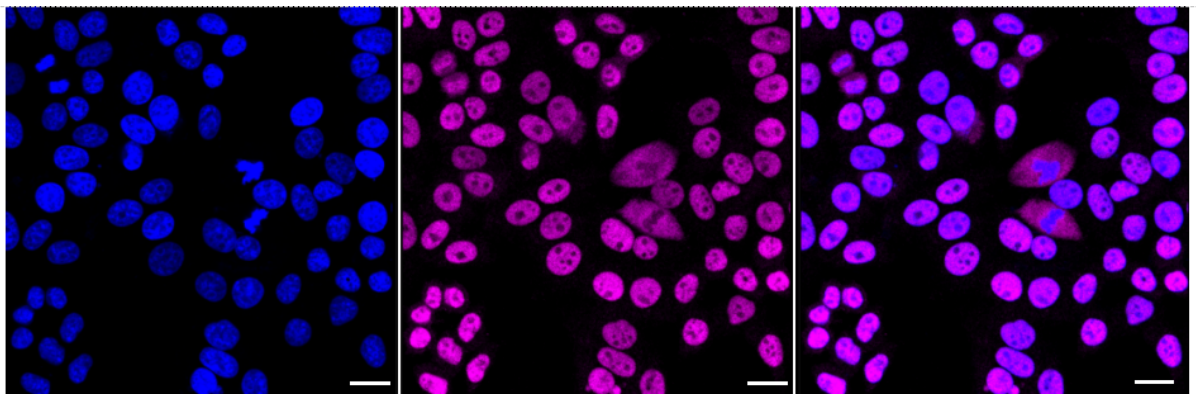
Western Blotting (WB): 1:1,000-1:5,000 Flow Cytometry (FCM): 1:2,000
Immunocytochemistry (IC): 1:1,000

Protocols

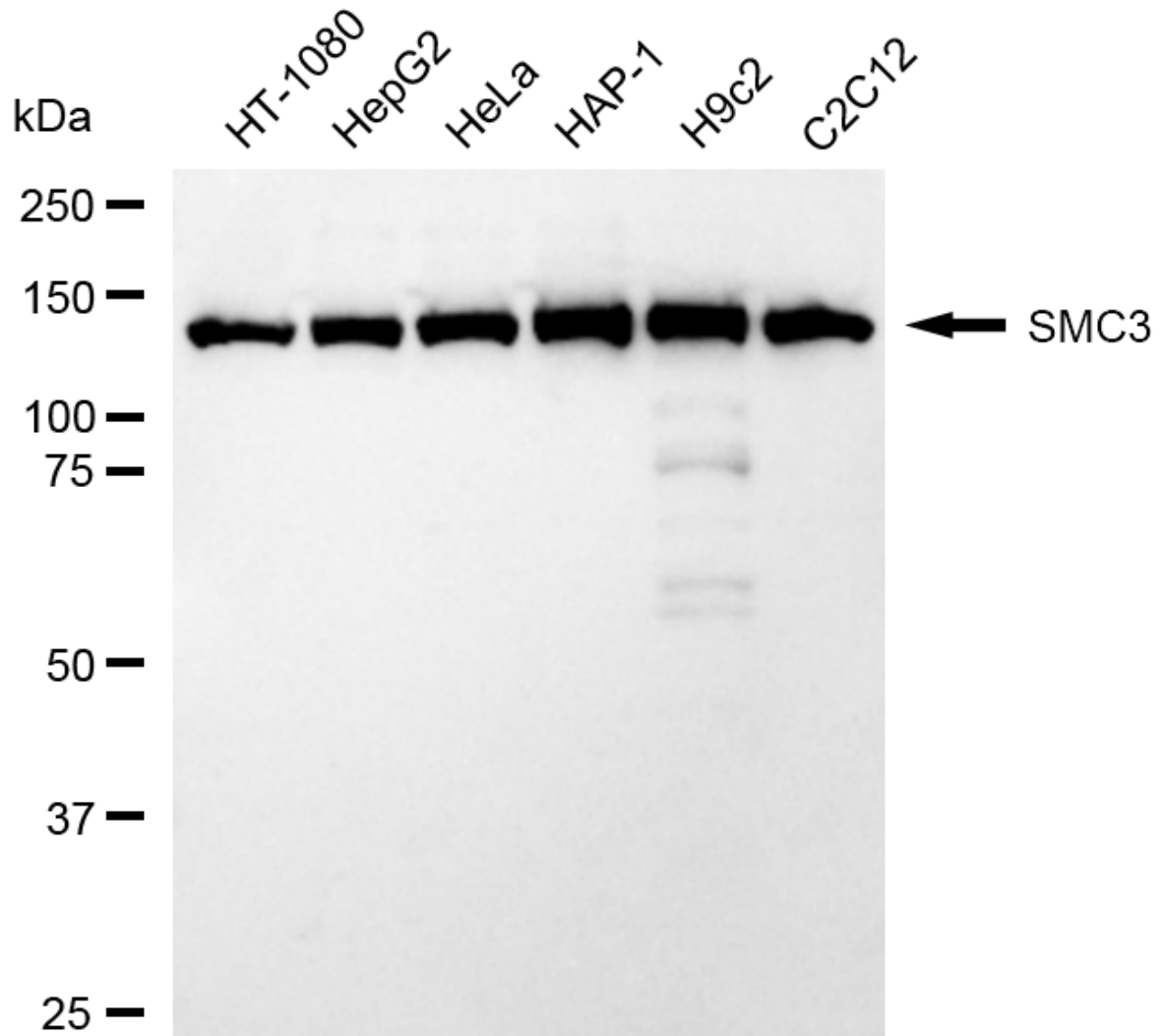
For general and specific antibody protocols please visit our website. Read all instructions before using this product.



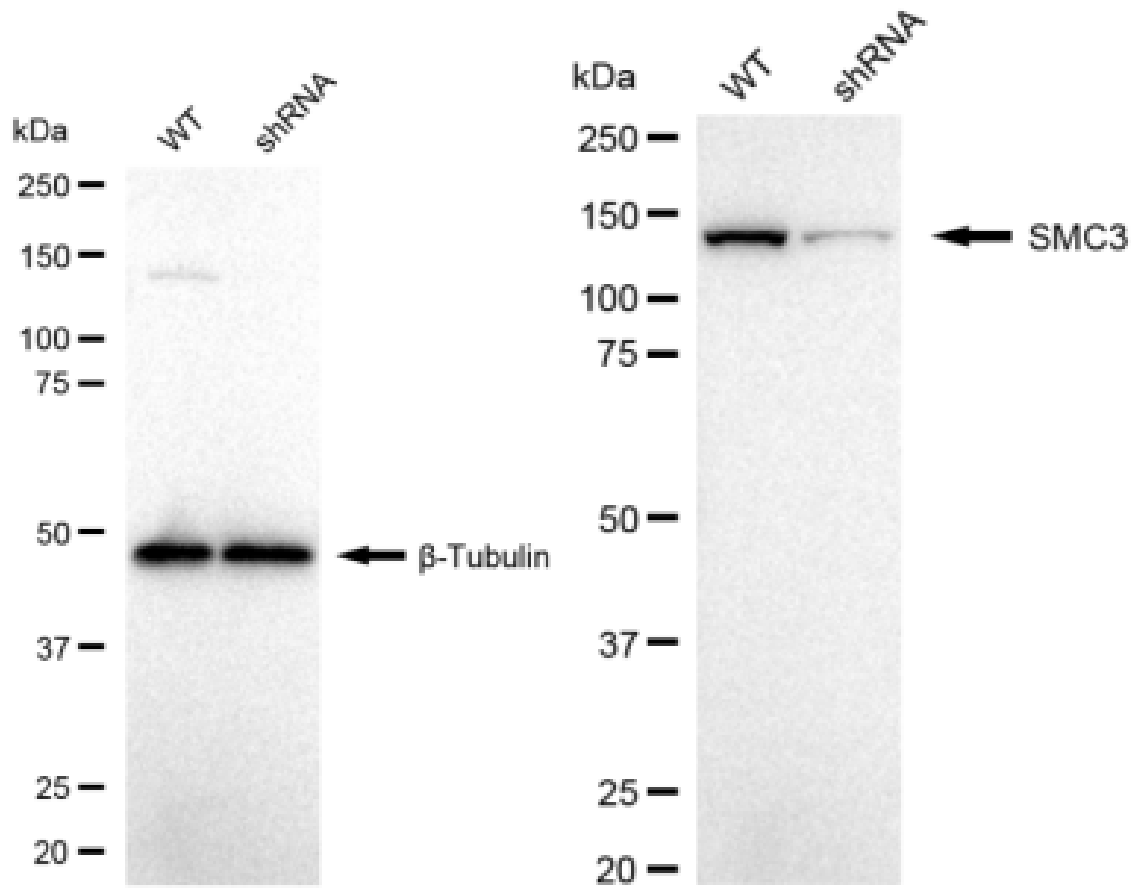
Flow cytometric analysis of SMC3 expression in HepG2 cells using anti-SMC3 antibody 1:2,000. Green, isotype control; red, SMC3.



Immunocytochemical staining of HepG2 cells with anti-SMC3 antibody 1:1,000. Nuclei were stained blue with DAPI; SMC3 was stained magenta with Alexa Fluor® 647. Images were taken using Leica stellaris 5. Protein abundance based on laser Intensity and smart gain: Medium. Scale bar: 20 μ m.



Western blotting analysis using anti-SMC3 antibody 1:5,000 and HRP-conjugated goat anti-rabbit secondary antibody 1:20,000 respectively. Image was developed using FeQ™ ECL Substrate Kit .



Western blotting analysis using anti-SMC3 antibody 1:5,000 and HRP-conjugated goat anti-rabbit secondary antibody 1:20,000 respectively. Image was developed using NaQ™ ECL Substrate Kit .