



SunLong Biotech Co.,LTD  
Tel: 0086-571- 56623320 Fax:0086-571- 56623318  
E-mail:sales@sunlongbiotech.com  
www.sunlongbiotech.com

## **[KD-Validated] Anti-SMARCE1 Rabbit Monoclonal Antibody**

Cat No.: KD-10818

### **Aliases:**

SMARCE1; SWI/SNF Related, Matrix Associated, Actin Dependent Regulator Of Chromatin, Subfamily E, Member 1; BAF57; SWI/SNF-Related Matrix-Associated Actin-Dependent Regulator Of Chromatin Subfamily E Member 1; BRG1-Associated Factor 57; SWI/SNF-Related Matrix-Associated Actin-Dependent Regulator Of Chromatin E1; Chromatin Remodeling Complex BRG1-Associated Factor 57; CSS5

### **Background:**

UniProt Entry: [Q969G3](#);NCBI Gene Entry: [6605](#)

### **Application Information**

Molecular Weight: Predicted, 47 kDa,, observed, 57 kDa Clonality: Rabbit monoclonal antibody Clone ID: 23GB2810 Species Reactivity: Human, Mouse, Rat Applications Tested: Western Blotting (WB), Flow Cytometry (FCM), Immunocytochemistry (IC)

### **Immunogen**

A synthesized peptide derived from human BAF57/SMARCE1

### **Isotype**

Rabbit IgG

### **Storage Buffer**

Supplied in PBS (pH 7.4) containing 50% glycerol, and 0.02% sodium azide.

### Storage

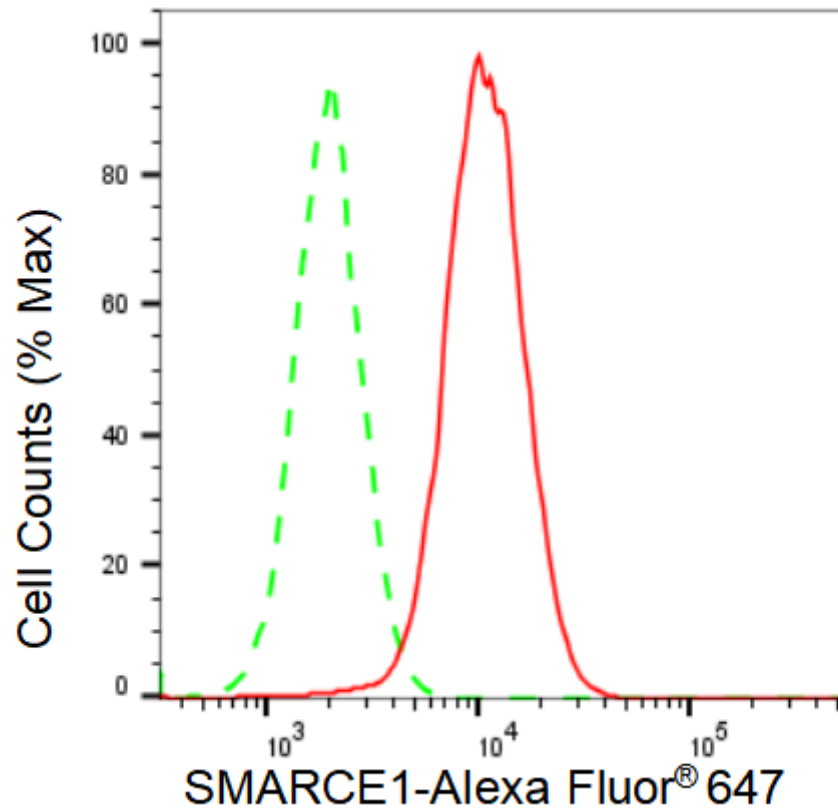
Store at -20 °C for one year.

### Recommended Dilutions

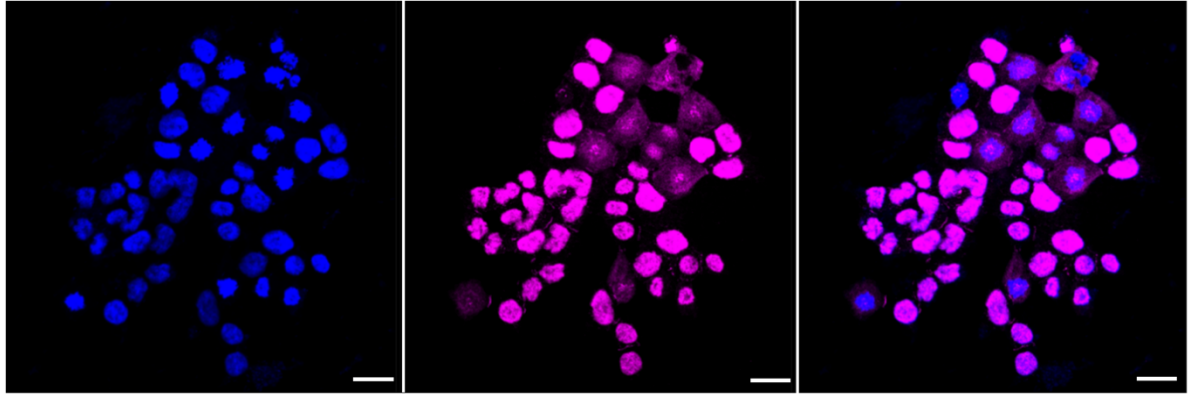
Western Blotting (WB): 1:1,000-1:5,000 Flow Cytometry (FCM): 1:2,000  
Immunocytochemistry (IC): 1:1,000

### Protocols

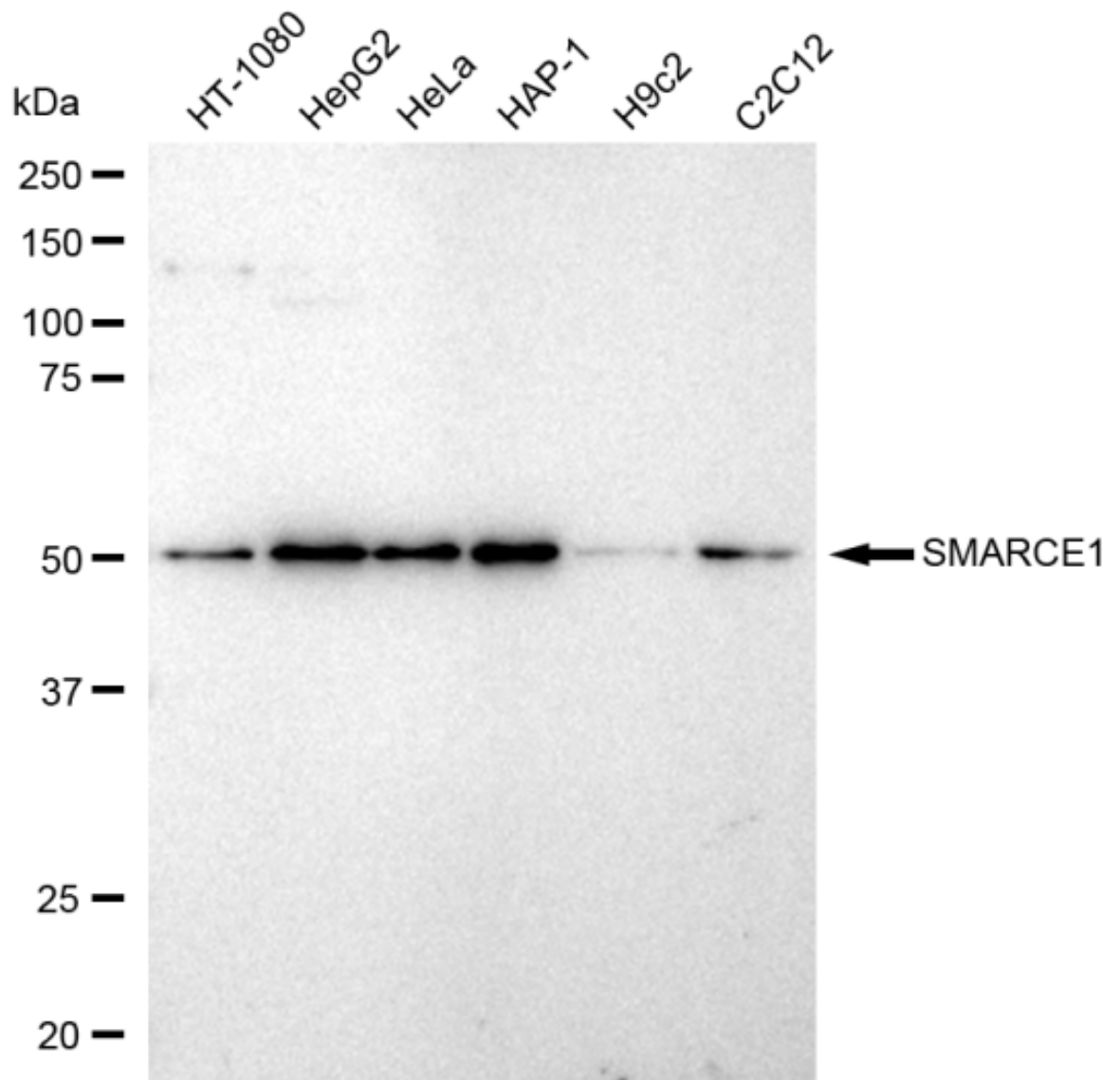
For general and specific antibody protocols please visit our website. Read all instructions before using this product.



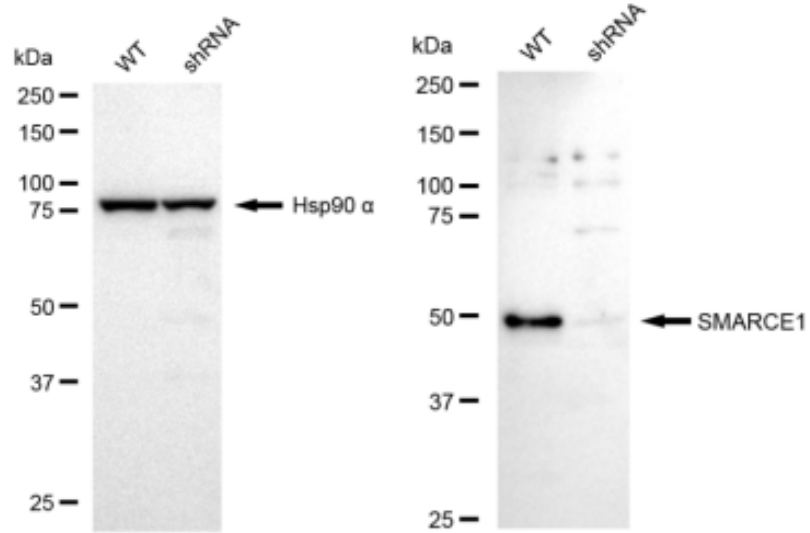
Flow cytometric analysis of SMARCE1 expression in HAP-1 cells using SMARCE1 antibody 1:2,000. Green, isotype control; red, SMARCE1.



Immunocytochemical staining of HAP-1 cells with SMARCE1 antibody 1:1,000. Nuclei were stained blue with DAPI; SMARCE1 was stained magenta with Alexa Fluor® 647. Images were taken using Leica stellaris 5. Protein abundance based on laser Intensity and smart gain: High. Scale bar: 20  $\mu\text{m}$ .



Western blotting analysis using anti-SMARCE1 antibody 1:5,000 and HRP-conjugated goat anti-rabbit secondary antibody 1:20,000 respectively. Image was developed using FeQ™ ECL Substrate Kit .



Western blotting analysis using anti-SMARCE1 antibody 1:5,000 and HRP-conjugated goat anti-rabbit secondary antibody 1:20,000 respectively. Image was developed using FeQ™ ECL Substrate Kit .