



SunLong Biotech Co.,LTD
Tel: 0086-571- 56623320 Fax:0086-571- 56623318
E-mail:sales@sunlongbiotech.com
www.sunlongbiotech.com

[KD-Validated] Anti-SMARCC1 Rabbit Monoclonal Antibody

Cat No.: KD-10817

Aliases:

SMARCC1; SWI/SNF Related, Matrix Associated, Actin Dependent Regulator Of Chromatin Subfamily C Member 1; BAF155; CRACC1; SRG3; SWI/SNF-Related Matrix-Associated Actin-Dependent Regulator Of Chromatin Subfamily C Member 1; SWI/SNF Complex Subunit SMARCC1; SWI/SNF Complex 155 KDa Subunit; BRG1-Associated Factor 155; Rsc8; SWI/SNF Related, Matrix Associated, Actin Dependent Regulator Of; Chromatin, Subfamily C, Member 1; Mammalian Chromatin Remodeling Complex BRG1-Associated Factor 155; Chromatin Remodeling Complex BAF155 Subunit; HYC5; SWI3; RSC8

Background:

UniProt Entry: [Q92922](#);NCBI Gene Entry: [6599](#)

Application Information

Molecular Weight: Predicted, 123 kDa, observed, 155 kDa Clonality: Rabbit monoclonal antibody Clone ID: 23GB4165 Species Reactivity: Human, Mouse, Rat Applications Tested: Western Blotting (WB), Flow Cytometry (FCM), Immunocytochemistry (IC)

Immunogen

A synthesized peptide derived from human SMARCC1/BAF155

Isotype

Rabbit IgG

Storage Buffer

Supplied in PBS (pH 7.4) containing 50% glycerol, and 0.02% sodium azide.

Storage

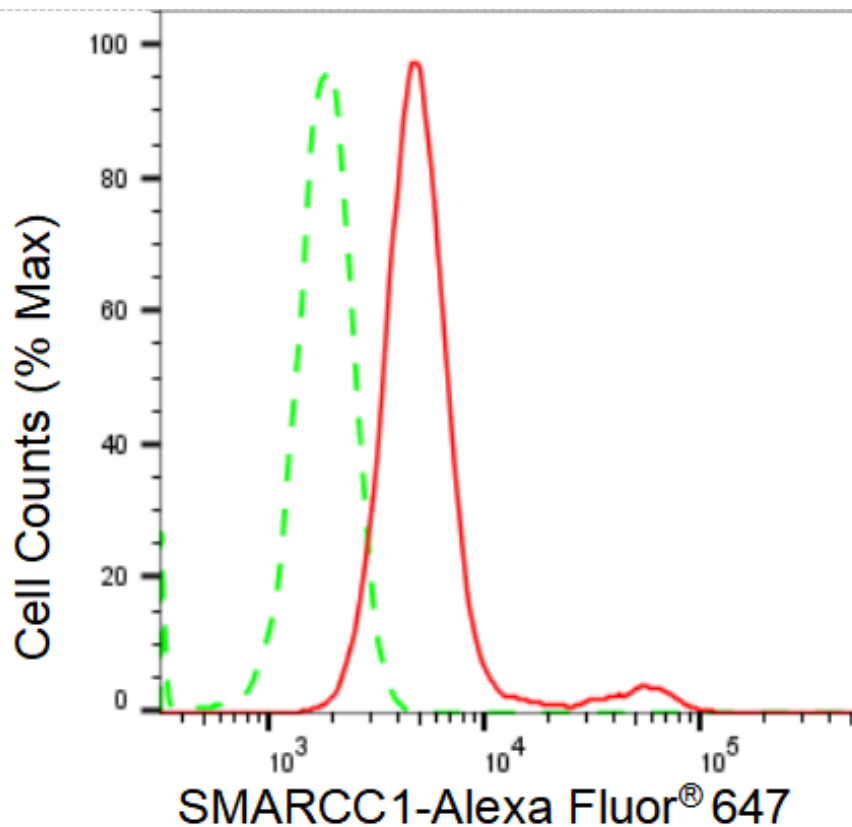
Store at -20 °C for one year.

Recommended Dilutions

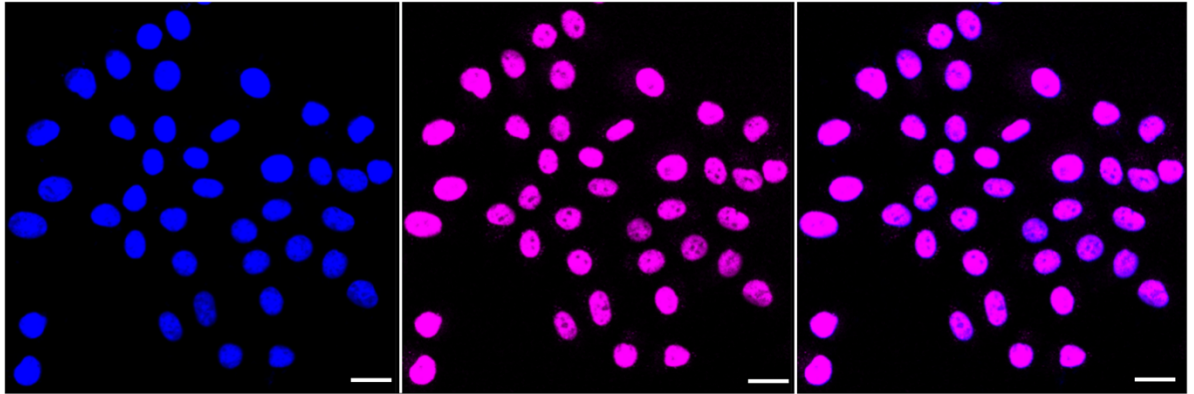
Western Blotting (WB): 1:1,000-1:5,000 Flow Cytometry (FCM): 1:2,000
Immunocytochemistry (IC): 1:1,000

Protocols

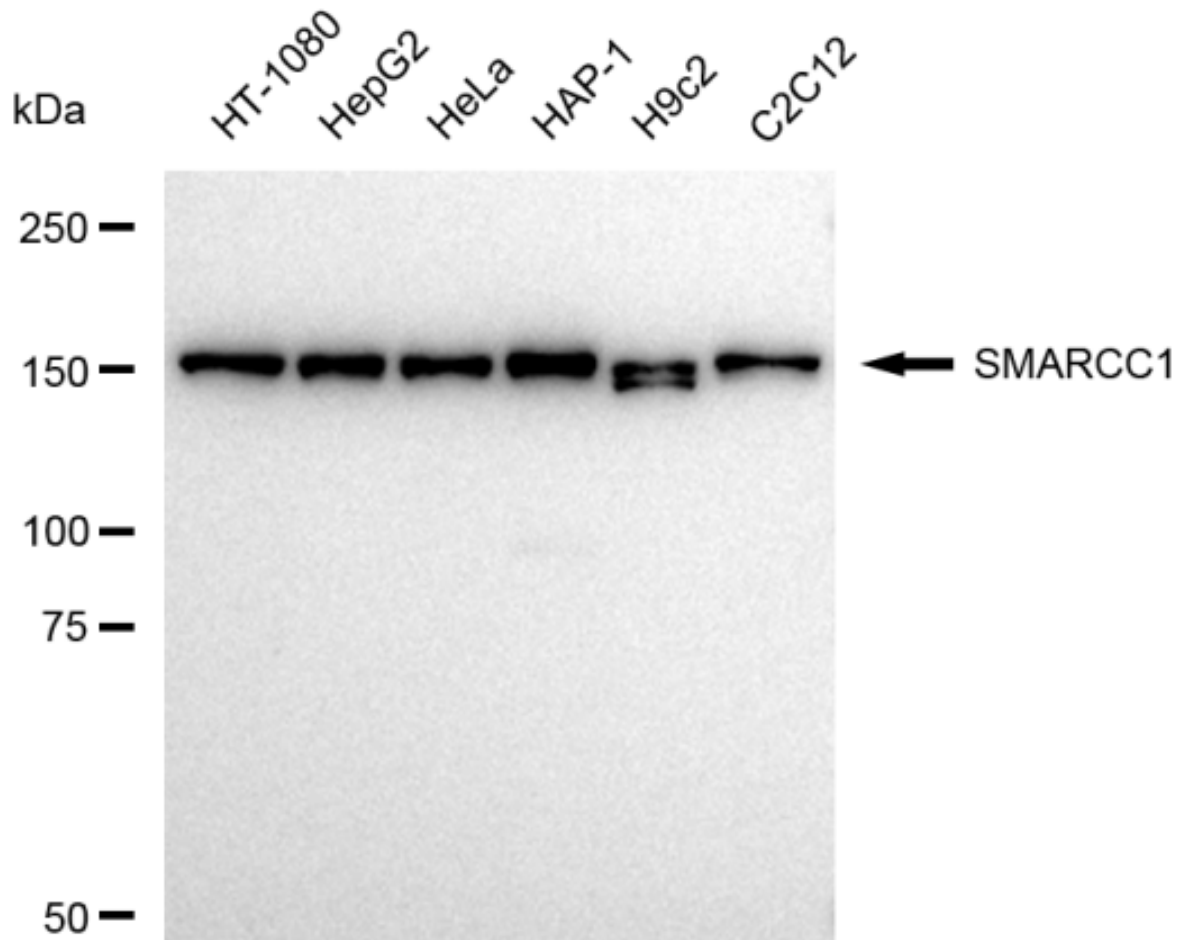
For general and specific antibody protocols please visit our website. Read all instructions before using this product.



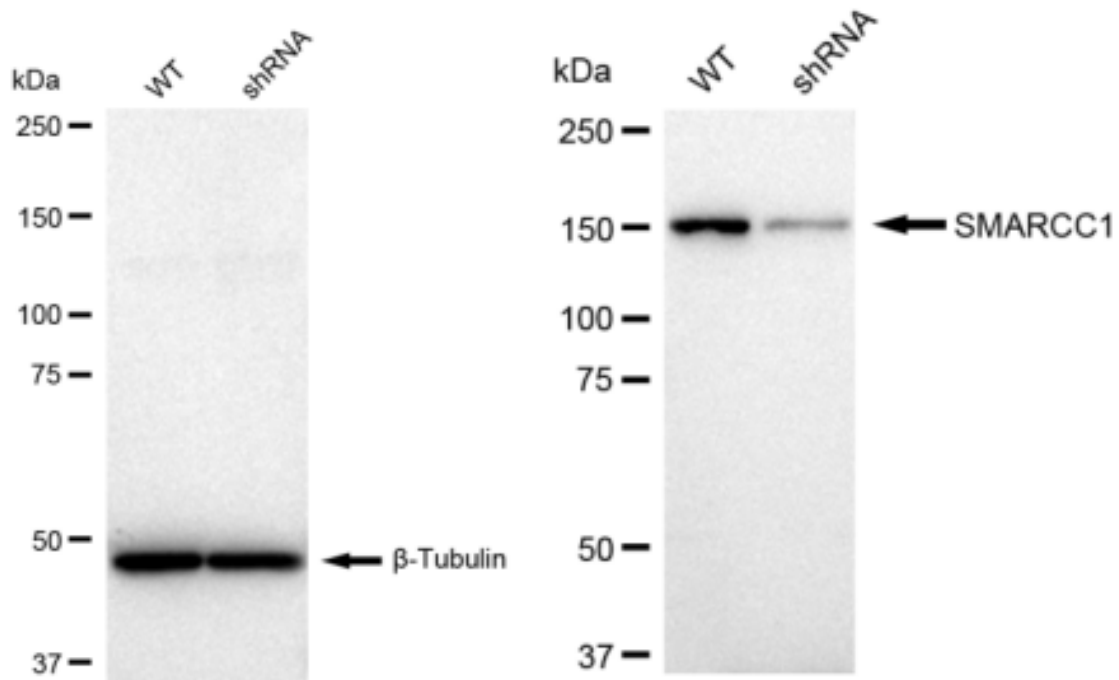
Flow cytometric analysis of SMARCC1 expression in HepG2 cells using SMARCC1 antibody 1:2,000. Green, isotype control; red, SMARCC1.



Immunocytochemical staining of HepG2 cells with SMARCC1 antibody 1:1,000. Nuclei were stained blue with DAPI; SMARCC1 was stained magenta with Alexa Fluor® 647. Images were taken using Leica stellaris 5. Protein abundance based on laser Intensity and smart gain: Medium. Scale bar: 20 μ m.



Western blotting analysis using anti-SMARCC1 antibody 1:5,000 and HRP-conjugated goat anti-rabbit secondary antibody 1:20,000 respectively. Image was developed using FeQ™ ECL Substrate Kit .



Western blotting analysis using anti-SMARCC1 antibody 1:5,000 and HRP-conjugated goat anti-rabbit secondary antibody 1:20,000 respectively. Image was developed using FeQ™ ECL Substrate Kit .