



SunLong Biotech Co.,LTD  
Tel: 0086-571- 56623320 Fax:0086-571- 56623318  
E-mail:sales@sunlongbiotech.com  
www.sunlongbiotech.com

## **[KD-Validated] Anti-SMARCA4 Rabbit Monoclonal Antibody**

Cat No.: KD-10816

### **Aliases:**

SMARCA4; SWI/SNF Related, Matrix Associated, Actin Dependent Regulator Of Chromatin, Subfamily A, Member 4; BRG1; Mitotic Growth And Transcription Activator; ATP-Dependent Helicase SMARCA4; SNF2-BETA; HSNF2b; BAF190; SNF2LB; SNF2L4; SNF2; SWI2; Global Transcription Activator Homologous Sequence; Sucrose Nonfermenting-Like 4; Transcription Activator BRG1; BRG1-Associated Factor 190A; Protein Brahma Homolog 1; BRM/SWI2-Related Gene 1; Homeotic Gene Regulator; Brahma Protein-Like 1; Nuclear Protein GRB1; Protein BRG-1; SNF2-Like 4; FLJ39786; BAF190A; SWI/SNF-Related Matrix-Associated Actin-Dependent Regulator Of Chromatin Subfamily A Member 4; EC 3.6.4.-; SNF2-Beta; EC 3.6.1; MRD16; RTPS2; SNF2B; CSS4

### **Background:**

UniProt Entry: [P51532](#);NCBI Gene Entry: [6597](#)

### **Application Information**

Molecular Weight: Predicted, 185 kDa, observed, 185 kDa Clonality: Rabbit monoclonal antibody Clone ID: 24GB2065 Species Reactivity: Human, Mouse, Rat Applications Tested: Western Blotting (WB), Flow Cytometry (FCM), Immunocytochemistry (IC)

### **Immunogen**

A synthesized peptide derived from human BRG1

### **Isotype**

Rabbit IgG

**Storage Buffer**

Supplied in PBS (pH 7.4) containing 50% glycerol, and 0.02% sodium azide.

**Storage**

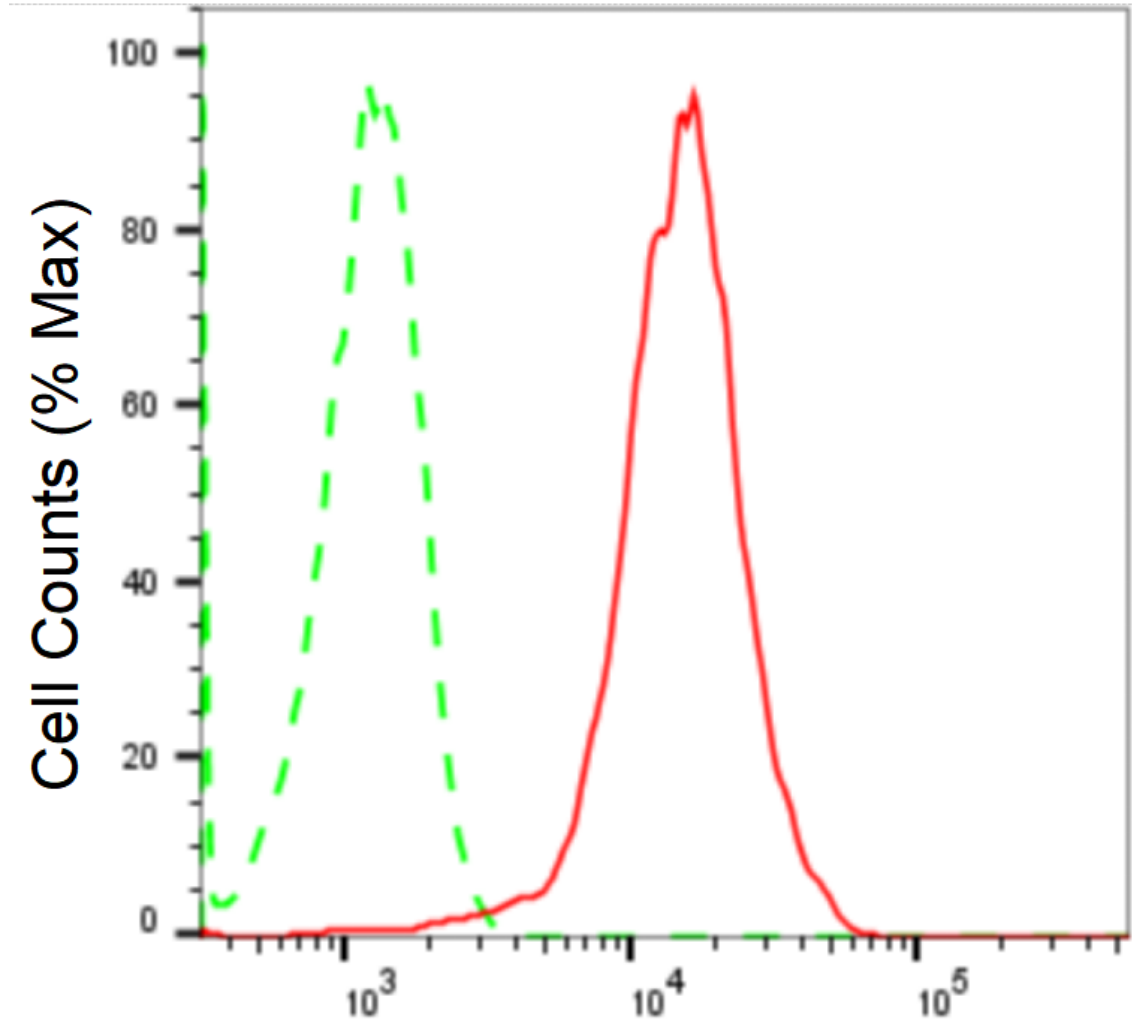
Store at -20 °C for one year.

**Recommended Dilutions**

Western Blotting (WB): 1:4,000-1:20,000 Flow Cytometry (FCM): 1:2,000  
Immunocytochemistry (IC): 1:1,000

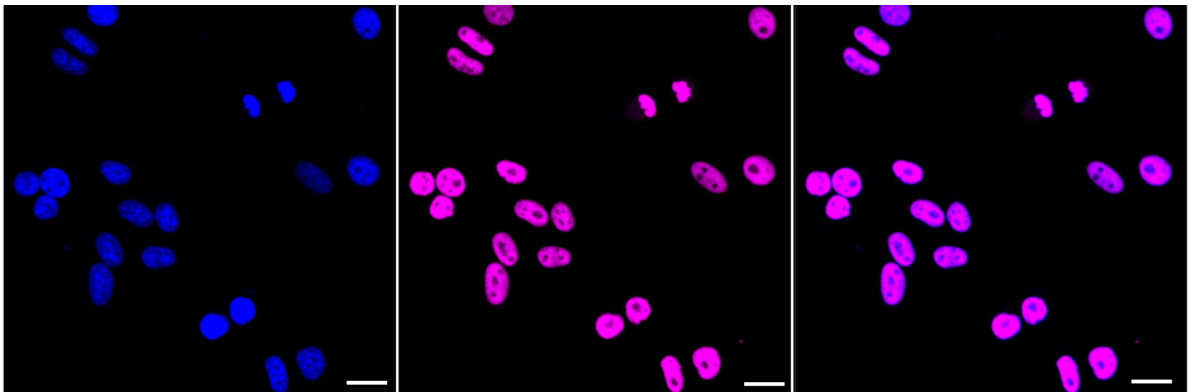
**Protocols**

For general and specific antibody protocols please visit our website. Read all instructions before using this product.

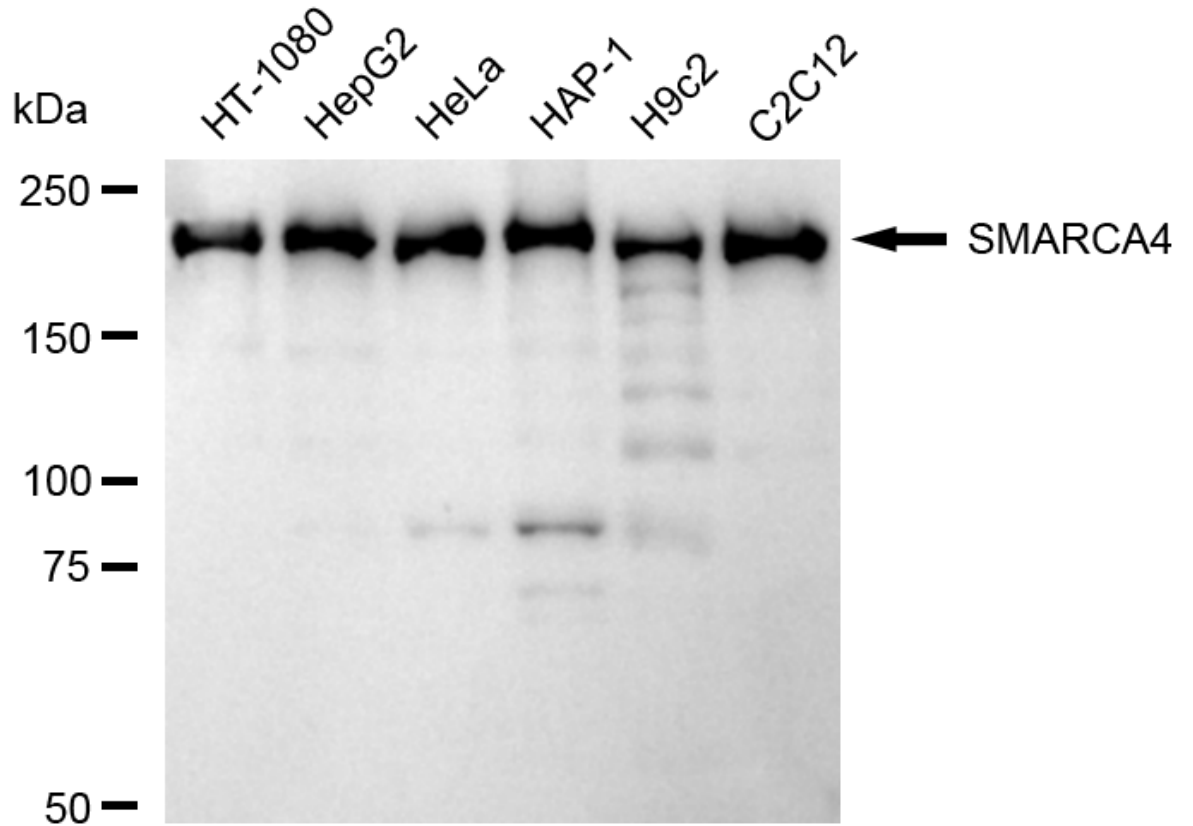


## SMARCA4-Alexa Fluor<sup>®</sup> 647

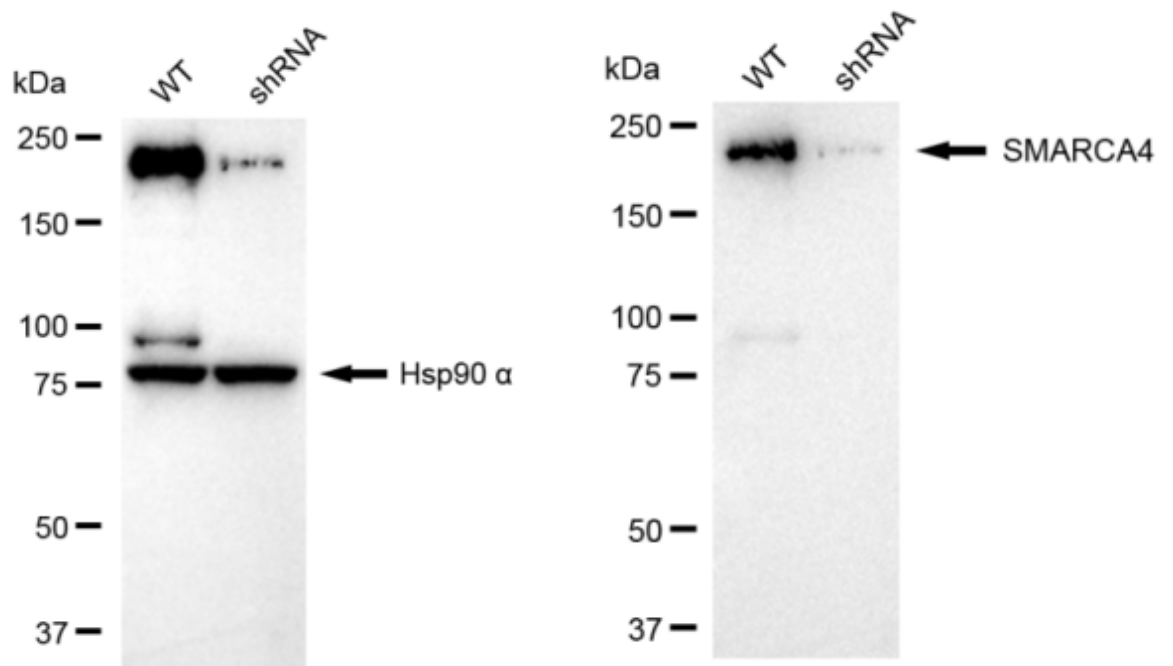
Flow cytometric analysis of SMARCA4 expression in HepG2 cells using anti-SMARCA4 antibody 1:2,000. Green, isotype control; red, SMARCA4.



Immunocytochemical staining of HepG2 cells with anti-SMARCA4 antibody 1:1,000. Nuclei were stained blue with DAPI; SMARCA4 was stained magenta with Alexa Fluor® 647. Images were taken using Leica stellaris 5. Protein abundance based on laser Intensity and smart gain: High. Scale bar: 20  $\mu$ m.



Western blotting analysis using anti-SMARCA4 antibody 1:20,000 and HRP-conjugated goat anti-rabbit secondary antibody 1:20,000 respectively. Image was developed using FeQ™ ECL Substrate Kit .



Western blotting analysis using anti-SMARCA4 antibody 1:20,000 and HRP-conjugated goat anti-rabbit secondary antibody 1:20,000 respectively. Image was developed using NaQ™ ECL Substrate Kit .