



SunLong Biotech Co.,LTD
Tel: 0086-571- 56623320 Fax:0086-571- 56623318
E-mail:sales@sunlongbiotech.com
www.sunlongbiotech.com

[KD-Validated] Anti-SMAD5 Rabbit Monoclonal Antibody

Cat No.: KD-10815

Aliases:

SMAD Family Member 5; JV5-1; MADH5; Mothers Against Decapentaplegic Homolog; DWFC; MAD, Mothers Against Decapentaplegic Homolog 5 (Drosophila); Mothers Against Decapentaplegic, Drosophila, Homolog Of, 5; SMAD, Mothers Against DPP Homolog 5 (Drosophila) 2; MAD, Mothers Against Decapentaplegic Homolog 5; SMAD, Mothers Against DPP Homolog 5; SMA- And MAD-Related Protein 5; Mothers Against DPP Homolog 5; MAD Homolog 5; SMAD 5; HSmad5; Smad5; Dwfc

Background:

UniProt Entry: [Q99717](#);NCBI Gene Entry: [4090](#)

Application Information

Molecular Weight: Predicted, 52 kDa, observed, 52 kDa Clonality: Rabbit monoclonal antibody Clone ID: 23GB2910 Species Reactivity: Human, Mouse, Rat Applications Tested: Western Blotting (WB), Flow Cytometry (FCM), Immunocytochemistry (IC)

Immunogen

A synthesized peptide derived from human Smad5

Isotype

Rabbit IgG

Storage Buffer

Supplied in PBS (pH 7.4) containing 50% glycerol, and 0.02% sodium azide.

Storage

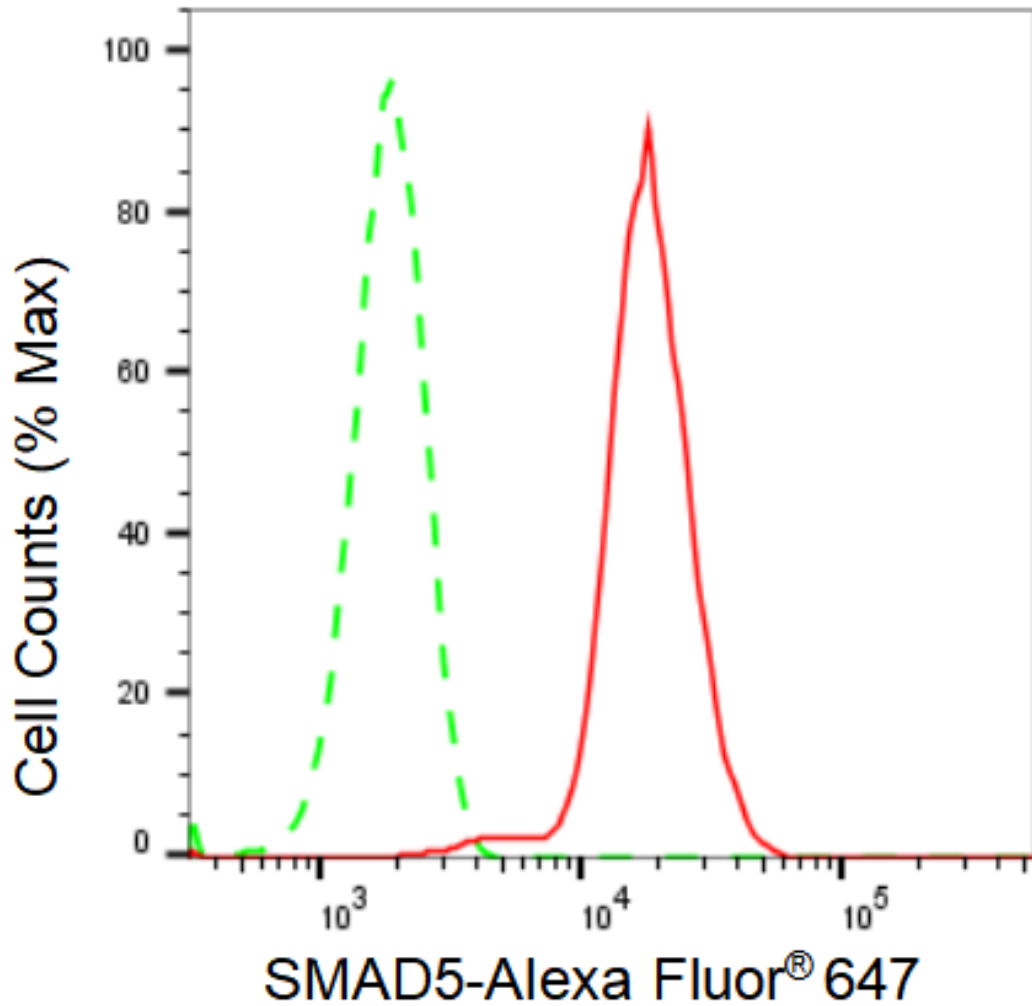
Store at -20 °C for one year.

Recommended Dilutions

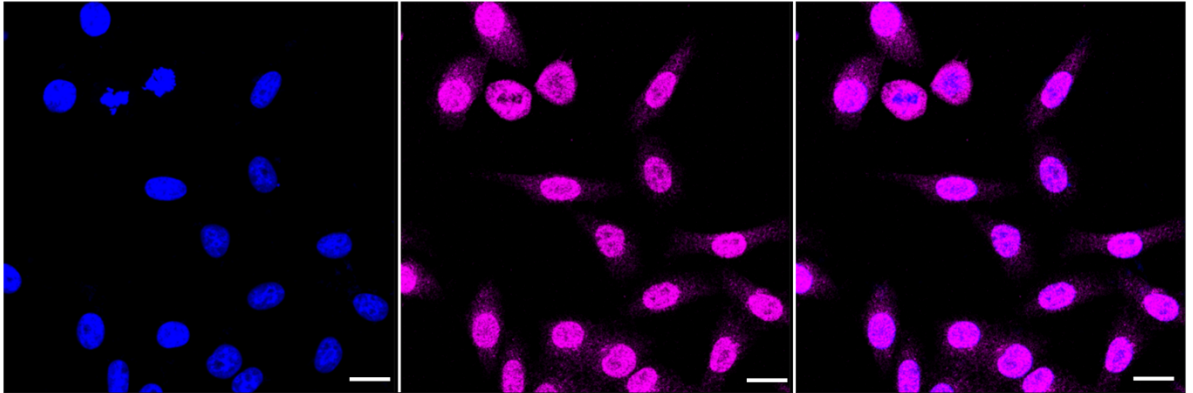
Western Blotting (WB): 1:1,000-1:5,000 Flow Cytometry (FCM): 1:2,000
Immunocytochemistry (IC): 1:1,000

Protocols

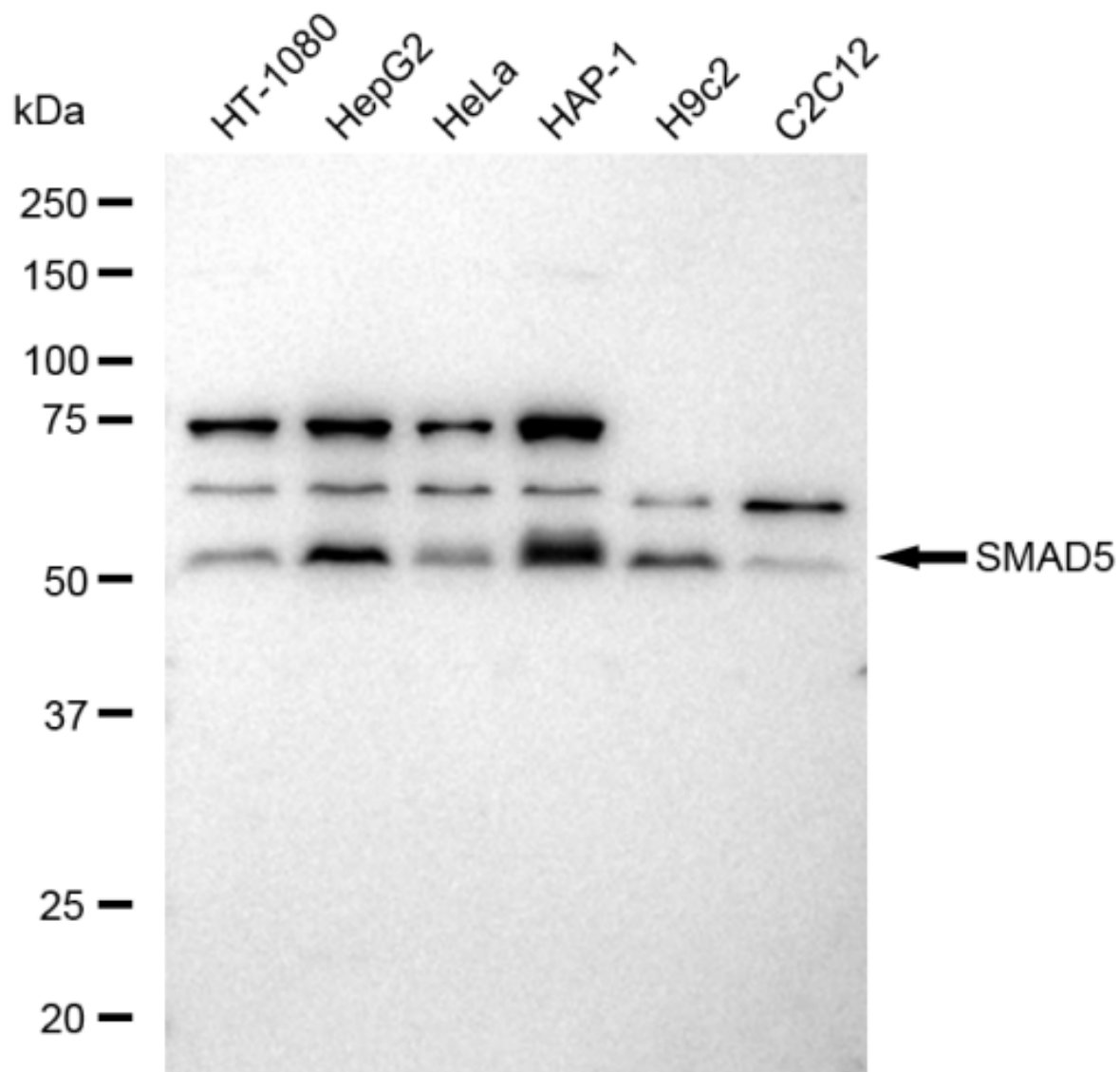
For general and specific antibody protocols please visit our website. Read all instructions before using this product.



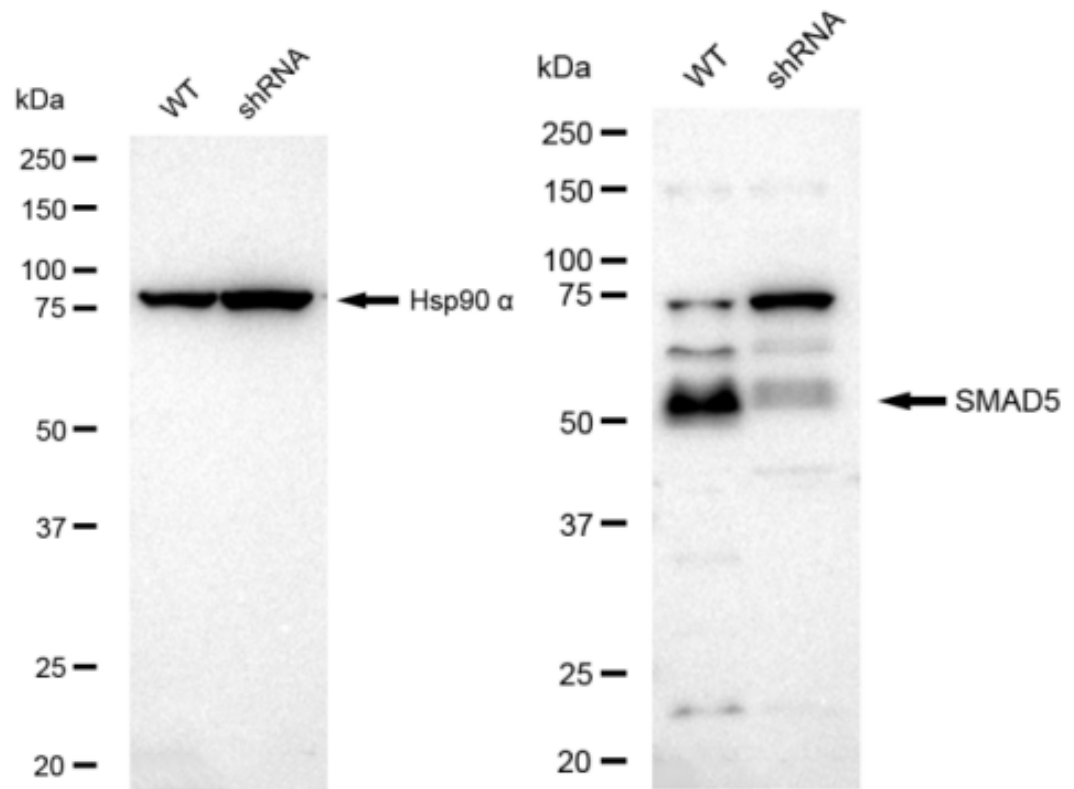
Flow cytometric analysis of SMAD5 expression in HepG2 cells using SMAD5 antibody 1:2,000. Green, isotype control; red, SMAD5.



Immunocytochemical staining of HepG2 cells with SMAD5 antibody 1:1,000. Nuclei were stained blue with DAPI; SMAD5 was stained magenta with Alexa Fluor® 647. Images were taken using Leica stellaris 5. Protein abundance based on laser Intensity and smart gain: Medium. Scale bar: 20 μm .



Western blotting analysis using anti-SMAD5 antibody 1:5,000 and HRP-conjugated goat anti-rabbit secondary antibody 1:20,000 respectively. Image was developed using FeQ™ ECL Substrate Kit .



Western blotting analysis using anti-SMAD5 antibody 1:5,000 and HRP-conjugated goat anti-rabbit secondary antibody 1:20,000 respectively. Image was developed using FeQ™ ECL Substrate Kit .