



SunLong Biotech Co.,LTD  
Tel: 0086-571- 56623320 Fax:0086-571- 56623318  
E-mail:sales@sunlongbiotech.com  
www.sunlongbiotech.com

## [KD-Validated] Anti-Smad4 Rabbit Monoclonal Antibody

Cat No.: KD-10814

### Aliases:

DPC4; MADH4; Mothers Against Decapentaplegic Homolog 4; Deletion Target In Pancreatic Carcinoma 4; MAD Homolog 4; MAD, Mothers Against Decapentaplegic Homolog 4 (Drosophila); Mothers Against Decapentaplegic, Drosophila, Homolog Of, 4; SMAD, Mothers Against DPP Homolog 4 (Drosophila); Deleted In Pancreatic Carcinoma Locus 4; SMAD, Mothers Against DPP Homolog 4; Mothers Against DPP Homolog 4; SMAD 4; HSMAD4; MYHRS; Smad4; JIP

### Background:

UniProt Entry: [Q13485](#);NCBI Gene Entry: [4089](#)

### Application Information

Molecular Weight: Predicted, 60 kDa, observed, 65 kDa Clonality: Rabbit monoclonal antibody Clone ID: 23GB975 Species Reactivity: Human, Mouse, Rat Applications Tested: Western Blotting (WB), Flow Cytometry (FCM), Immunocytochemistry (IC)

### Immunogen

A synthesized peptide derived from human Smad4

### Isotype

Rabbit IgG

### Storage Buffer

Supplied in PBS (pH 7.4) containing 50% glycerol, and 0.02% sodium azide.

**Storage**

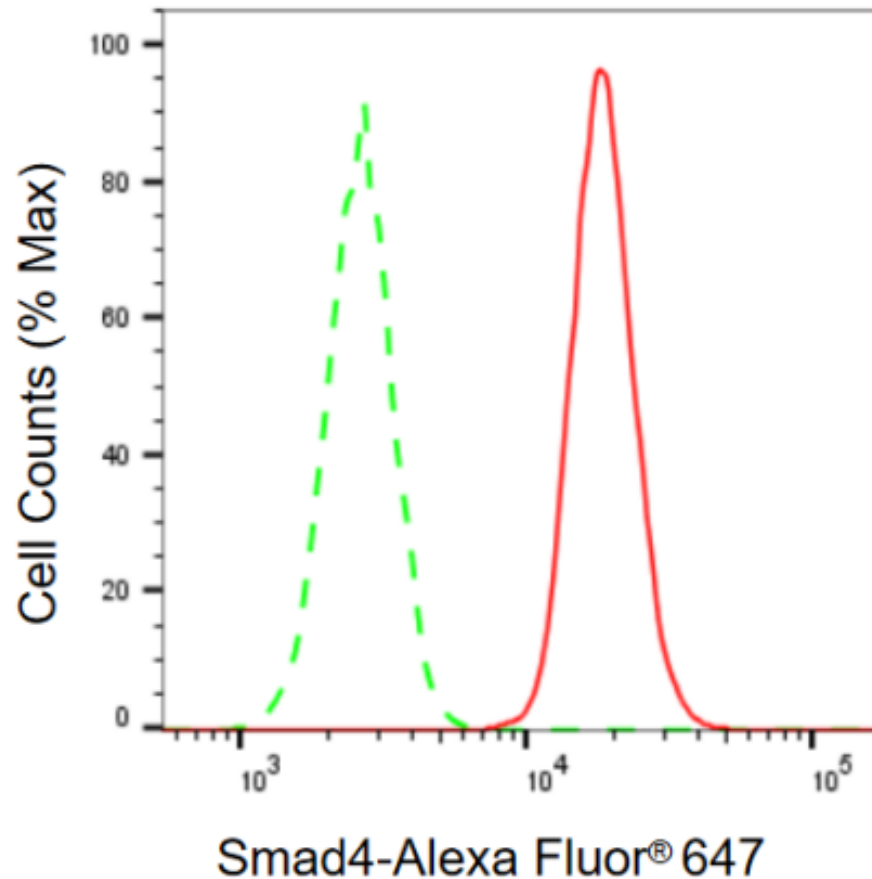
Store at -20 °C for one year.

**Recommended Dilutions**

Western Blotting (WB): 1:1,000-1:5,000 Flow Cytometry (FCM): 1:2,000  
Immunocytochemistry (IC): 1:1,000

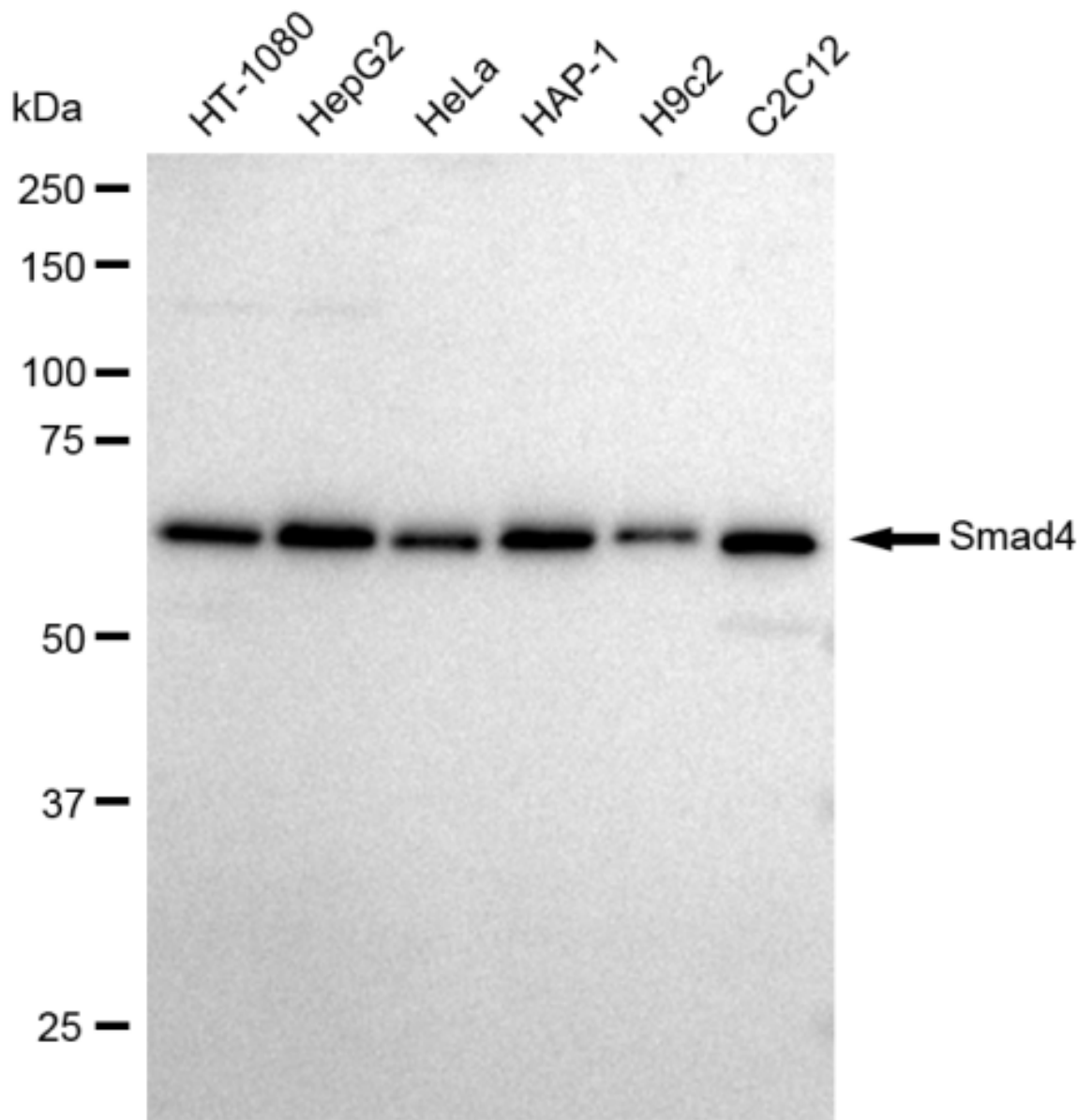
**Protocols**

For general and specific antibody protocols please visit our website. Read all instructions before using this product.

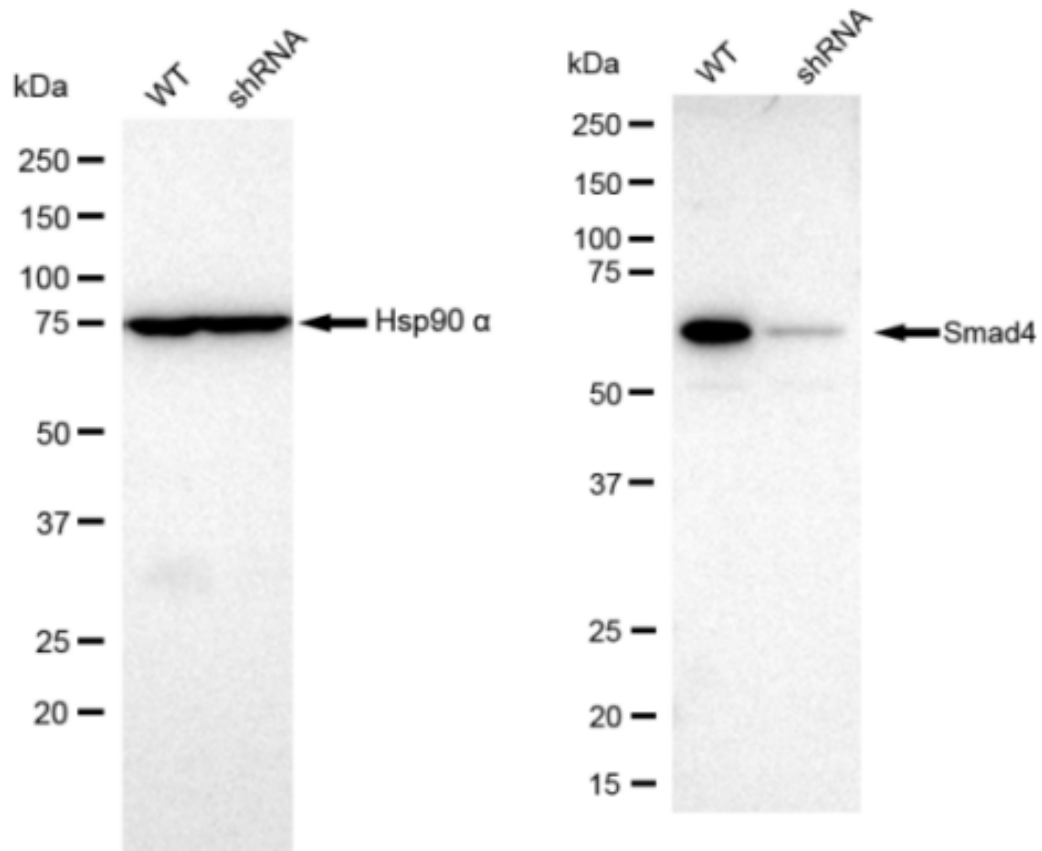


Flow cytometric analysis of Smad4 expression in C2C12 cells using Smad4 antibody 1:1,000. Nuclei were stained blue with DAPI; Smad4 was stained magenta with Alexa

Fluor® 647. Images were taken using Leica stellaris 5. Protein abundance based on laser Intensity and smart gain: Medium. Scale bar: 20 µm.



Western blotting analysis using anti-Smad4 antibody . Total cell lysates (30 µg) from various cell lines were loaded and separated by SDS-PAGE. The blot was incubated with anti-Smad4 antibody and HRP-conjugated goat anti rabbit secondary antibody respectively. Image was developed using FeQ™ ECL Substrate Kit .



Western blotting analysis using anti-Smad4 antibody . Smad4 expression in wild type (WT) and Smad4 shRNA knockdown (KD) HT-1080 cells with 30  $\mu$ g of total cell lysates. Hsp90  $\alpha$  serves as a loading control. The blot was incubated with anti-Smad4 antibody and HRP-conjugated goat anti rabbit secondary antibody respectively. Image was developed using FeQ<sup>TM</sup> ECL Substrate Kit .